

target : Neptune  
 target radius (km) : 24764.00  
 C/A epoch : 2047-03-16T14:03:21.020  
 Event type : PgRgt  
 : Neptune occs: geocentric, not topocentric  
 : Ring occs: geocentric, topocentric  
 Gaia source ID : 33874858035745408  
 2Mass ID (if available) : 02582533+1508053

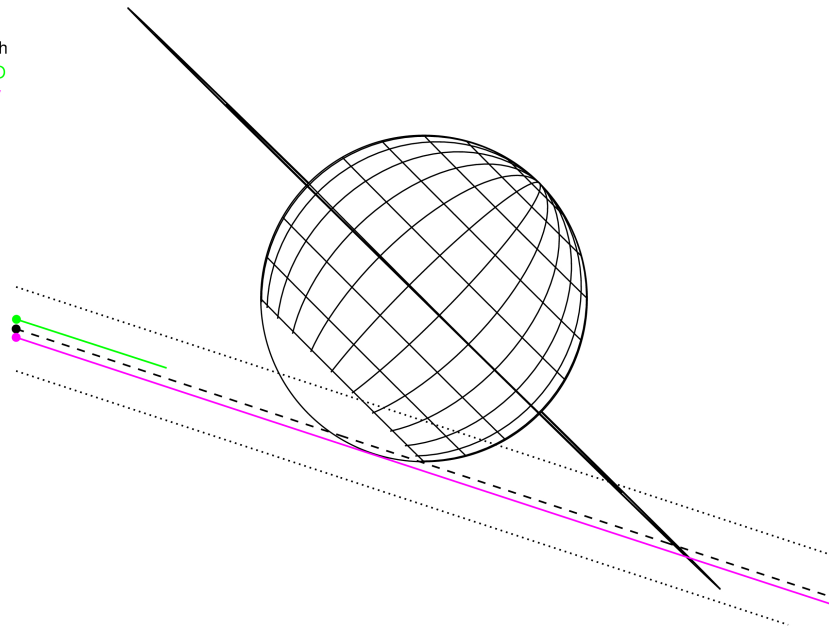
Neptune 2047-03-16T14:03:21 K13.67 G16.49 PgRgt

ICRS Star Coord at Epoch: 02h 58m 25.41282s +15°08'05.30835s  
 RUWE (>1.4 is poor) : 1.16  
 K magnitude : 13.670  
 G magnitude : 16.491  
 RP magnitude : 15.593  
 BP magnitude : 17.219  
 DUPflag : 0  
 Distance (au) : 30.426  
 f0 (km) : 0.000  
 g0 (km) : 0.000  
 skyplane vel. (km/s) : 23.83  
 Sun-Target sep (deg) : 51.34  
 Sun-Moon sep (deg) : 166.96  
 B (ring opening deg) : 0.26  
 PA of pole (deg) : -44.96



2047-03-16T14:03:21.0200 cc: 02 58 25.4128 8: +15 08 05.308 C/A 1.075° PA 341.80 deg v\_sky +23.83 km/s D 30.43 AU  
 Credit: Styled after SORA/Lucky Star

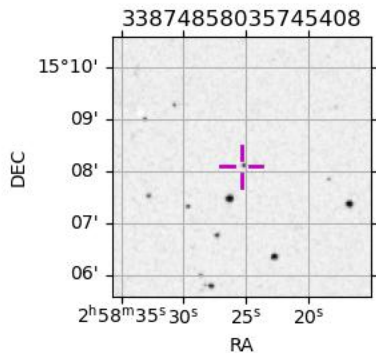
Earth  
 PMO  
 KAV



- 1 42000.0 Galle
- 2 53200.0 LeVerrier
- 3 55200.0 Lassell
- 4 57200.0 Arago
- 5 61953.0 Galatea
- 6 62933.0 Adams

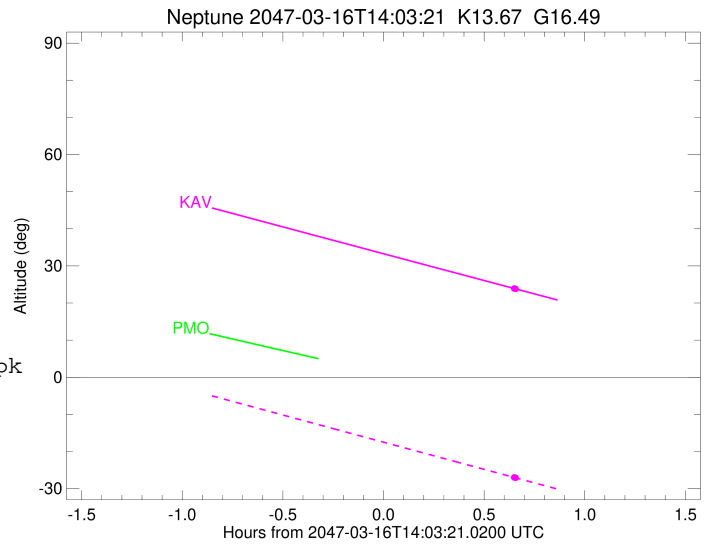
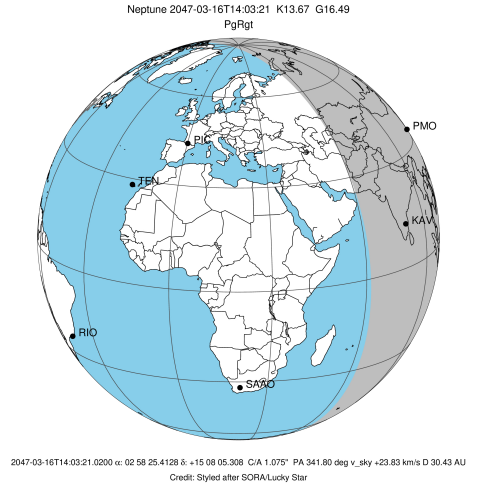
Observable events with sun below -5 deg and altitude above 5 deg unblocked by planet

Obs	Location	lat	Elon	Rings I	Planet	Rings E	Observed Events Interval	OEcode
PIC	Pic du Midi	42.9	0.1					PnnRnn
PAL	Palomar Mt (200")	33.4	243.1					PnnRnn
PMO	Purple Mtn Obs. Nanki	32.1	118.8					PnnRnn
KPNO	Kitt Peak Natl Obs	32.0	248.4					PnnRnn
MCD	McDonald Obs. 2.7m	30.7	256.0					PnnRnn
TEN	Teide Obs./Tenerife	28.3	343.5					PnnRnn
IRTF	Mauna Kea/IRTF	19.8	204.5					PnnRnn
KAV	Kavalur Observatory	12.6	78.8	+		+	MAR 16 14:41 - MAR 16 14:41	PnnRie
RIO	Rio de Janeiro	-22.9	316.8					PnnRnn
ESO	European Southern Obs	-29.3	289.3					PnnRnn
AAT	Siding Spring (AAT)	-31.3	149.1					PnnRnn
SAAO	So. Afr. Astro. Obs.	-32.4	20.8					PnnRnn
MSO	Mt. Stromlo Observato	-35.3	149.0					PnnRnn



```

target                : Neptune
target radius (km)   : 24764.00
C/A epoch             : 2047-03-16T14:07:02.610
Event type            : PgRgt
: Neptune occs: geocentric, not topocentric
: Ring occs: geocentric, topocentric
Observer code         : KAV
Location              : Kavalur Observatory
Latitude (deg)        : 12.57556
E. Longitude (deg)    : 78.83167
Altitude (km)         : 0.722
Gaia source ID        : 33874858035745408
2Mass ID (if available) : 02582533+1508053
ICRS Star Coord at Epoch: 02h 58m 25.41282s +15:08:05.30835s
RUWE (>1.4 is poor) : 1.16
K magnitude           : 13.670
G magnitude           : 16.491
RP magnitude          : 15.593
BP magnitude          : 17.219
DUPflag              : 0
Distance (au)         : 30.426
f0 (km)               : 0.000
g0 (km)               : 0.000
skyplane vel. (km/s) : 23.83
Sun-Target sep (deg) : 51.34
Sun-Moon sep (deg)   : 166.44
B (ring opening deg) : 0.26
PA of pole (deg)     : -44.96
Pole direction: RA (deg): 299.33374
Dec (deg): 42.95036
C/A sky separation (") : 1.129
C/A sky separation (km) : 24906.9
NAIF SPICE kernels   : RAJobs_U111+rgf16.spk
URKALLv1.spk
nep097.bsp
nep101.bsp
sat4401.bsp
de440.bsp
earth_720101_070426.bpc
earthstns_itr93_040916.bsp
earth_200101_990628_predict.bpc
pck00010.tpc
pck.urall11.tpc.Neptune
naif0012.tls
IAU_NEPTUNE_for_RINGFIT.tpc.BECAREFUL
earth_flat_IAU.spk
    
```



Ring	I/E	UTC	b?	alt	alt-sun	radius	r-dot	lat-geo	lat-geodetic
Adams	I	2047-03-16T14:41:57.864		24.00	-26.89	63256.01	1176.76		
Galatea	I	2047-03-16T14:41:56.994		24.00	-26.89	62379.09	1123.08		
Arago	I	2047-03-16T14:41:51.755		24.02	-26.87	58588.18	813.30		

No planet occultations

Arago	E	2047-03-16T14:41:51.843		24.02	-26.87	58953.66	851.15		
Galatea	E	2047-03-16T14:41:57.016		24.00	-26.89	62971.78	1159.88		
Adams	E	2047-03-16T14:41:57.880		24.00	-26.89	63846.73	1210.39		