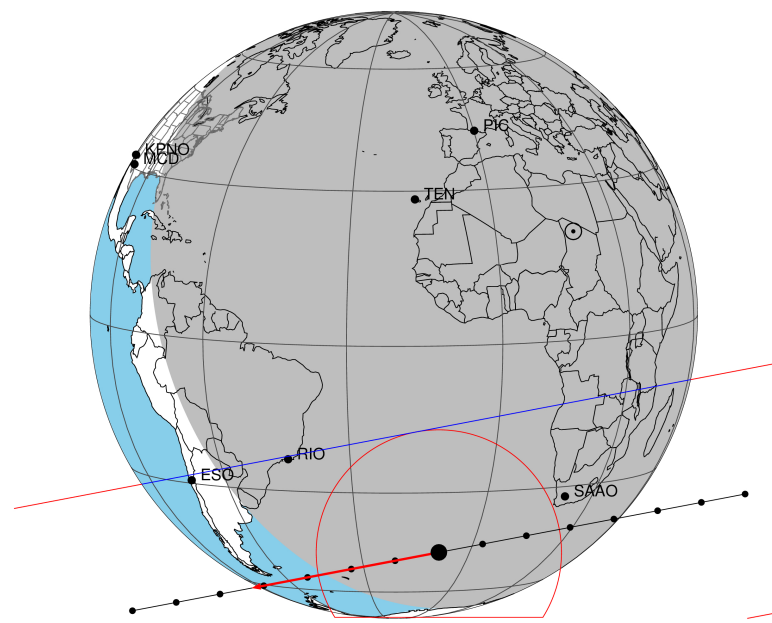


target : Titan
 target radius (km) : 2575.15
 C/A epoch : 2027-11-24T22:34:12.640
 Event type : Pt
 : Titan occs: topocentric, not geocentric
 : Not a ringed target
 Gaia source ID : 2564416434323889152
 2Mass ID (if available) : 01231763+0549408

ICRS Star Coord at Epoch: 01h 23m 17.67035s +05:49:40.87898s
 RUWE (>1.4 is poor) : 0.96
 K magnitude : 12.331
 G magnitude : 13.675
 RP magnitude : 13.206
 BP magnitude : 13.981
 DUPflag : 0
 Distance (au) : 8.535
 f0 (km) : 0.00
 g0 (km) : 0.00
 skyplane vel. (km/s) : -15.59
 Sun-Target sep (deg) : 139.32
 Sun-Moon sep (deg) : 172.25
 B (ring opening deg) : -12.05
 PA of pole (deg) : 2.15
 Pole direction: RA (deg): 39.48270
 Dec (deg): 83.42790
 C/A sky separation (") : 0.821
 C/A sky separation (km) : 5083.9
 NAIF SPICE kernels : RAJobs_U111+rgf16.spk

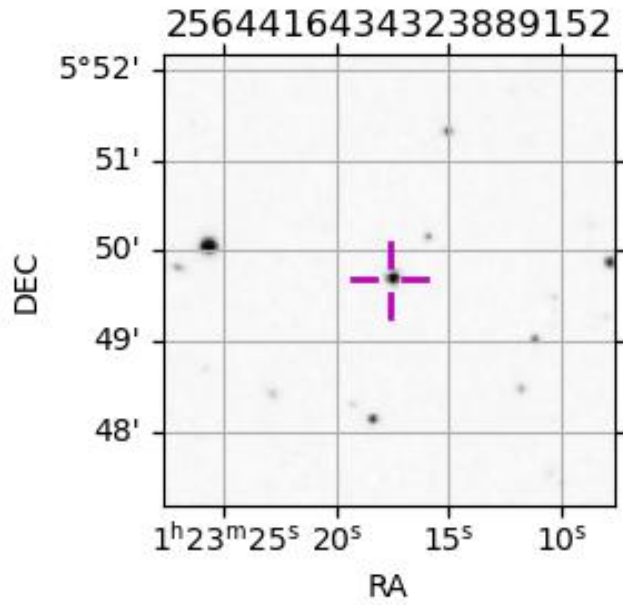
Titan 2027-11-24T22:34:12 K12.33 G13.68 dots 60.0 sec
Pt



2027-11-24T22:34:12.6400 α: 01 23 17.6703 δ: +05 49 40.879 C/A 0.821" PA 169.21 deg v_sky -15.59 km/s D 08.54 AU
 Credit: Styled after SORA/Lucky Star

Observable events with sun below -5 deg and altitude above 5 deg

Obs	Location	lat	Elon	Target	Observed Events Interval	OCode
PIC	Pic du Midi	42.9	0.1			Pnn
PAL	Palomar Mt (200")	33.4	243.1			Pnn
PMO	Purple Mtn Obs. Nanking	32.1	118.8			Pnn
KPNO	Kitt Peak Natl Obs	32.0	248.4			Pnn
MCD	McDonald Obs. 2.7m	30.7	256.0			Pnn
TEN	Teide Obs./Tenerife	28.3	343.5			Pnn
IRTF	Mauna Kea/IRTF	19.8	204.5			Pnn
KAV	Kavalur Observatory	12.6	78.8			Pnn
RIO	Rio de Janeiro	-22.9	316.8	+ +	NOV 24 22:36 - NOV 24 22:37	Pie
ESO	European Southern Obs. (3.6m)	-29.3	289.3			Pnn
AAT	Siding Spring (AAT)	-31.3	149.1			Pnn
SAAO	So. Afr. Astro. Obs. (Sutherland)	-32.4	20.8	+ +	NOV 24 22:28 - NOV 24 22:33	Pie
MSO	Mt. Stromlo Observatory	-35.3	149.0			Pnn



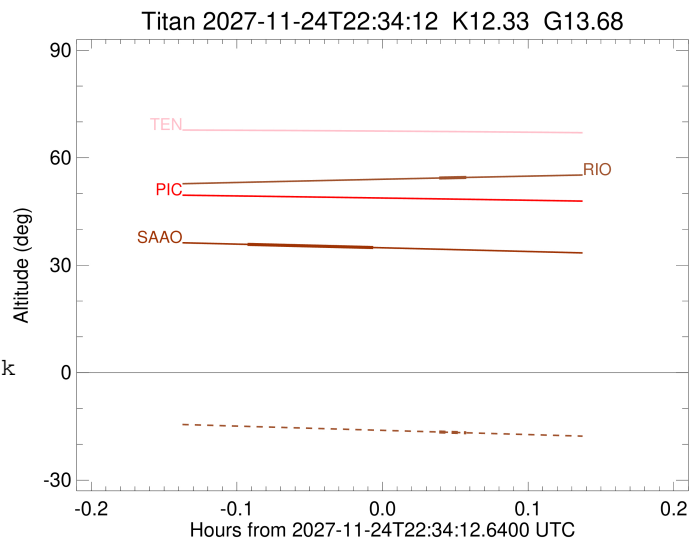
```

target                : Titan
target radius (km)   : 2575.15
C/A epoch            : 2027-11-24T22:37:05.320
Event type           : Pt
: Titan occs: topocentric, not geocentric
: Not a ringed target
Observer code        : RIO
Location             : Rio de Janeiro
Latitude (deg)       : -22.89506
E. Longitude (deg)   : 316.77708
Altitude (km)        : 0.033
Gaia source ID       : 2564416434323889152
2Mass ID (if available) : 01231763+0549408
ICRS Star Coord at Epoch: 01h 23m 17.67035s +05:49:40.87898s
RUWE (>1.4 is poor) : 0.96
K magnitude           : 12.331
G magnitude           : 13.675
RP magnitude          : 13.206
BP magnitude          : 13.981
DUPflag              : 0
Distance (au)         : 8.535
f0 (km)               : 0.00
g0 (km)               : 0.00
skyplane vel. (km/s) : -15.59
Sun-Target sep (deg) : 139.32
Sun-Moon sep (deg)   : 172.69
B (ring opening deg) : -12.05
PA of pole (deg)     : 2.15
Pole direction: RA (deg): 39.48270
Dec (deg): 83.42790
C/A sky separation (") : 0.406
C/A sky separation (km) : 2515.7
NAIF SPICE kernels   : RAJobs_U111+rgf16.spk
URKALLv1.spk
naif0012.tls
nep097.bsp
nep101.bsp
sat4401.bsp
de440.bsp
earth_720101_070426.bpc
jup365.bsp
urall6.bsp
IAU_SATURN_for_RINGFIT.tpc
pck00010.tpc
earth_200101_990628_predict.bpc
IAU_NEPTUNE_for_RINGFIT.tpc.BECAREFUL
uranus_ringframes_rfrench20220627_v1.tf
neptune_ringframes_rfrench20220702a_v1.tf
earth_flat_IAU.spk

```

x: target alt < 5.0 deg or sun > -5.0 deg

Target	I/E	UTC	alt	alt-sun	radius	lat-geo	lat-geodetic
Titan	I	2027-11-24T22:36:30.892	54.33	-16.56	2575.2	62.46	62.47
Titan	E	2027-11-24T22:37:39.742	54.49	-16.78	2575.1	77.95	77.95



```

target                : Titan
target radius (km)   : 2575.15
C/A epoch             : 2027-11-24T22:31:14.740
Event type            : Pt
: Titan occs: topocentric, not geocentric
: Not a ringed target
Observer code         : SAAO
Location              : So. Afr. Astro. Obs. (Sutherland)
Latitude (deg)       : -32.37953
E. Longitude (deg)   : 20.81070
Altitude (km)        : 1.768
Gaia source ID       : 2564416434323889152
2Mass ID (if available) : 01231763+0549408
ICRS Star Coord at Epoch: 01h 23m 17.67035s +05:49:40.87898s
RUWE (>1.4 is poor) : 0.96
K magnitude           : 12.331
G magnitude           : 13.675
RP magnitude          : 13.206
BP magnitude          : 13.981
DUPflag              : 0
Distance (au)        : 8.535
f0 (km)              : 0.00
g0 (km)              : 0.00
skyplane vel. (km/s) : -15.59
Sun-Target sep (deg) : 139.32
Sun-Moon sep (deg)   : 172.99
B (ring opening deg) : -12.05
PA of pole (deg)     : 2.15
Pole direction: RA (deg): 39.48270
Dec (deg): 83.42790
C/A sky separation (") : 0.111
C/A sky separation (km) : 688.4
NAIF SPICE kernels   : RAJobs_U111+rgf16.spk
URKALLv1.spk
naif0012.tls
nep097.bsp
nep101.bsp
sat4401.bsp
de440.bsp
earth_720101_070426.bpc
jup365.bsp
urall6.bsp
IAU_SATURN_for_RINGFIT.tpc
pck00010.tpc
earth_200101_990628_predict.bpc
IAU_NEPTUNE_for_RINGFIT.tpc.BECAREFUL
uranus_ringframes_rfrench20220627_v1.tf
neptune_ringframes_rfrench20220702a_v1.tf
earth_flat_IAU.spk

```

x: target alt < 5.0 deg or sun > -5.0 deg

Target	I/E	UTC	alt	alt-sun	radius	lat-geo	lat-geodetic
Titan	I	2027-11-24T22:28:38.503	35.80	-37.14	2575.2	2.61	2.61
Titan	E	2027-11-24T22:33:50.979	34.92	-37.10	2575.1	27.66	27.67

