

target : Titan  
 target radius (km) : 2575.15  
 C/A epoch : 2031-01-21T20:57:01.020  
 Event type : Pt  
 : Titan occs: topocentric, not geocentric  
 : Not a ringed target  
 Gaia source ID : 49803036312316672  
 2Mass ID (if available) : 03594549+1837550

ICRS Star Coord at Epoch: 03h 59m 45.50274s +18:37:54.88535s  
 RUWE (>1.4 is poor) : 1.01  
 K magnitude : 14.559  
 G magnitude : 16.399  
 RP magnitude : 15.768  
 BP magnitude : 16.866  
 DUPflag : 0  
 Distance (au) : 8.515  
 f0 (km) : 0.00  
 g0 (km) : 0.00  
 skyplane vel. (km/s) : -10.25  
 Sun-Target sep (deg) : 120.44  
 Sun-Moon sep (deg) : 138.93  
 B (ring opening deg) : -24.77  
 PA of pole (deg) : -2.53  
 Pole direction: RA (deg): 39.48270  
 Dec (deg): 83.42790  
 C/A sky separation (") : 0.728  
 C/A sky separation (km) : 4499.0  
 NAIF SPICE kernels : RAJobs\_U111+rgf16.spk  
 URKALLv1.spk  
 naif0012.tls  
 nep097.bsp  
 nep101.bsp  
 sat4401.bsp

Titan 2031-01-21T20:57:01 K14.56 G16.40 dots 60.0 sec  
 Pt

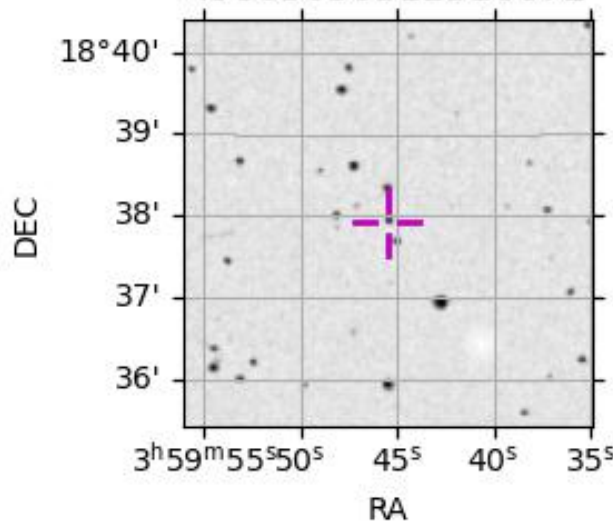


2031-01-21T20:57:01.0200 α: 03 59 45.5027 δ: +18 37 54.885 C/A 0.727" PA 171.72 deg v\_sky -10.26 km/s D 08.52 AU  
 Credit: Styled after SORA/Lucky Star

Observable events with sun below -5 deg and altitude above 5 deg

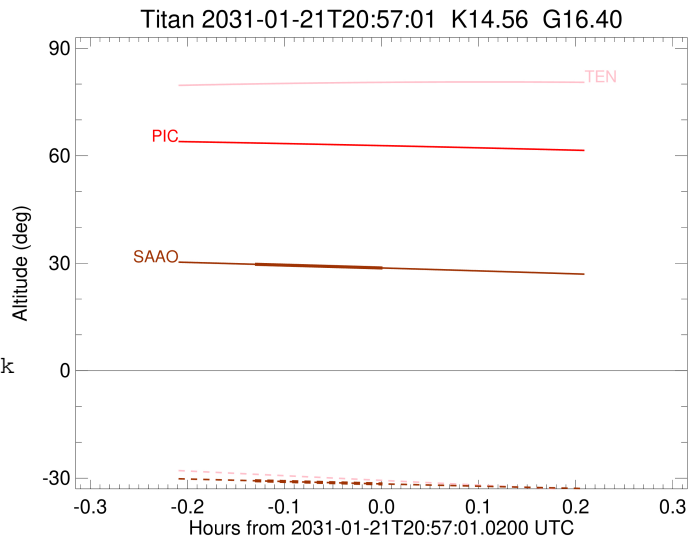
Obs	Location	lat	Elon	Target	Observed Events Interval	OCode
PIC	Pic du Midi	42.9	0.1			Pnn
PAL	Palomar Mt (200")	33.4	243.1			Pnn
PMO	Purple Mtn Obs. Nanking	32.1	118.8			Pnn
KPNO	Kitt Peak Natl Obs	32.0	248.4			Pnn
MCD	McDonald Obs. 2.7m	30.7	256.0			Pnn
TEN	Teide Obs./Tenerife	28.3	343.5			Pnn
IRTF	Mauna Kea/IRTF	19.8	204.5			Pnn
KAV	Kavalur Observatory	12.6	78.8			Pnn
RIO	Rio de Janeiro	-22.9	316.8			Pnn
ESO	European Southern Obs. (3.6m)	-29.3	289.3			Pnn
AAT	Siding Spring (AAT)	-31.3	149.1			Pnn
SAAO	So. Afr. Astro. Obs. (Sutherland)	-32.4	20.8	+ +	JAN 21 20:49 - JAN 21 20:57	Pie
MSO	Mt. Stromlo Observatory	-35.3	149.0			Pnn

49803036312316672



```

target                : Titan
target radius (km)   : 2575.15
C/A epoch            : 2031-01-21T20:53:08.460
Event type           : Pt
: Titan occs: topocentric, not geocentric
: Not a ringed target
Observer code        : SAAO
Location             : So. Afr. Astro. Obs. (Sutherland)
Latitude (deg)       : -32.37953
E. Longitude (deg)   : 20.81070
Altitude (km)        : 1.768
Gaia source ID       : 49803036312316672
2Mass ID (if available) : 03594549+1837550
ICRS Star Coord at Epoch: 03h 59m 45.50274s +18:37:54.88535s
RUWE (>1.4 is poor) : 1.01
K magnitude           : 14.559
G magnitude           : 16.399
RP magnitude          : 15.768
BP magnitude          : 16.866
DUPflag              : 0
Distance (au)         : 8.515
f0 (km)              : 0.00
g0 (km)              : 0.00
skyplane vel. (km/s) : -10.25
Sun-Target sep (deg) : 120.44
Sun-Moon sep (deg)   : 138.95
B (ring opening deg) : -24.77
PA of pole (deg)     : -2.53
Pole direction: RA (deg): 39.48270
Dec (deg): 83.42790
C/A sky separation (") : 0.085
C/A sky separation (km) : 527.8
NAIF SPICE kernels   : RAJobs_U111+rgf16.spk
URKALLv1.spk
naif0012.tls
nep097.bsp
nep101.bsp
sat4401.bsp
de440.bsp
earth_720101_070426.bpc
jup365.bsp
urall6.bsp
IAU_SATURN_for_RINGFIT.tpc
pck00010.tpc
earth_200101_990628_predict.bpc
IAU_NEPTUNE_for_RINGFIT.tpc.BECAREFUL
uranus_ringframes_rfrench20220627_v1.tf
neptune_ringframes_rfrench20220702a_v1.tf
earth_flat_IAU.spk
    
```



x: target alt < 5.0 deg or sun > -5.0 deg

Target	I/E	UTC	alt	alt-sun	radius	lat-geo	lat-geodetic
Titan	I	2031-01-21T20:49:10.592	29.69	-30.72	2575.1	-16.01	-16.02
Titan	E	2031-01-21T20:57:06.501	28.65	-31.61	2575.2	-5.39	-5.39