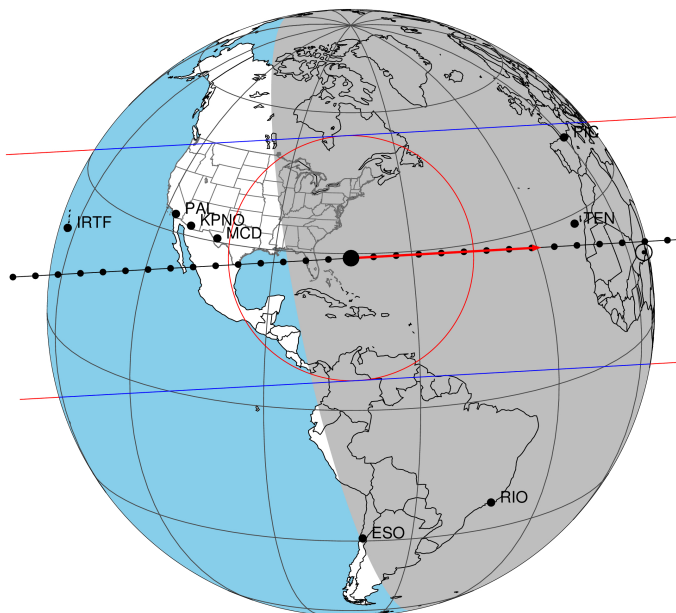


target : Titan
 target radius (km) : 2575.15
 C/A epoch : 2031-02-10T23:31:01.560
 Event type : Pgt
 : Titan occs: geocentric, topocentric
 : Not a ringed target
 Gaia source ID : 49815371458307328
 2Mass ID (if available) : 03592772+1840438

ICRS Star Coord at Epoch: 03h 59m 27.72428s +18:40:43.98245s
 RUWE (>1.4 is poor) : 1.24
 K magnitude : 8.126
 G magnitude : 11.096
 RP magnitude : 10.216
 BP magnitude : 11.914
 DUPflag : 0
 Distance (au) : 8.838
 f0 (km) : 0.00
 g0 (km) : 0.00
 skyplane vel. (km/s) : 7.91
 Sun-Target sep (deg) : 99.99
 Sun-Moon sep (deg) : 120.23
 B (ring opening deg) : -24.82
 PA of pole (deg) : -2.52
 Pole direction: RA (deg): 39.48270
 Dec (deg): 83.42790
 C/A sky separation (") : 0.176
 C/A sky separation (km) : 1130.7
 NAIF SPICE kernels : RAJobs_U111+rgf16.spk
 URKALLv1.spk
 naif0012.tls
 nep097.bsp
 nep101.bsp
 sat4401.bsp

Titan 2031-02-10T23:31:01 K8.13 G11.10 dots 60.0 sec
 Pgt

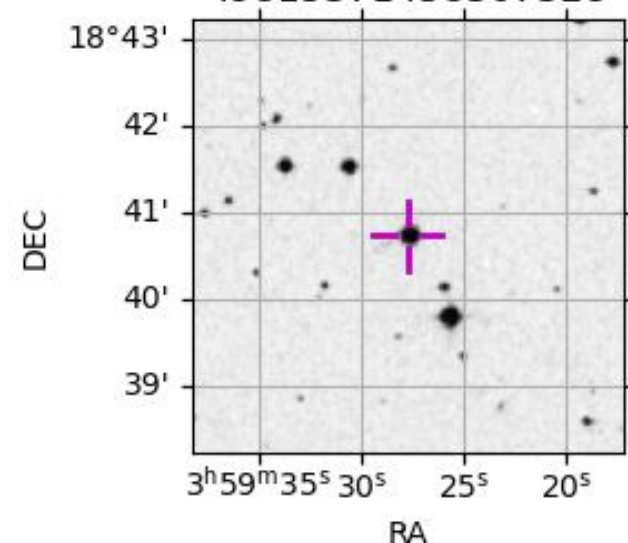


2031-02-10T23:31:01.5600 α: 03 59 27.7243 δ: +18 40 43.982 C/A 0.179" PA 356.78 deg v_sky + 7.91 km/s D 08.84 AU
 Credit: Styled after SORA/Lucky Star

Observable events with sun below -5 deg and altitude above 5 deg

Obs	Location	lat	Elon	Target	Observed Events Interval	OEcode
PIC	Pic du Midi	42.9	0.1	+ +	FEB 10 23:38 - FEB 10 23:43	Pie
PAL	Palomar Mt (200")	33.4	243.1			Pnn
PMO	Purple Mtn Obs. Nanking	32.1	118.8			Pnn
KPNO	Kitt Peak Natl Obs	32.0	248.4			Pnn
MCD	McDonald Obs. 2.7m	30.7	256.0			Pnn
TEN	Teide Obs./Tenerife	28.3	343.5	+ +	FEB 10 23:35 - FEB 10 23:46	Pie
IRTF	Mauna Kea/IRTF	19.8	204.5			Pnn
KAV	Kavalur Observatory	12.6	78.8			Pnn
RIO	Rio de Janeiro	-22.9	316.8			Pnn
ESO	European Southern Obs. (3.6m)	-29.3	289.3			Pnn
AAT	Siding Spring (AAT)	-31.3	149.1			Pnn
SAAO	So. Afr. Astro. Obs. (Sutherland)	-32.4	20.8			Pnn
MSO	Mt. Stromlo Observatory	-35.3	149.0			Pnn

49815371458307328



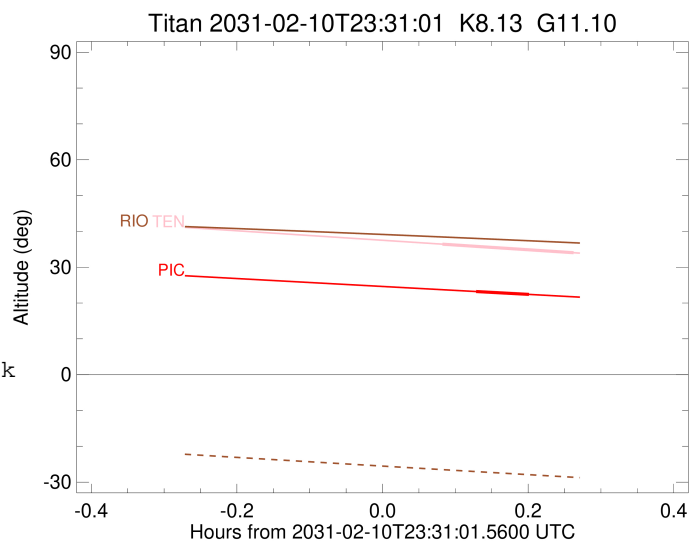
```

target                : Titan
target radius (km)   : 2575.15
C/A epoch             : 2031-02-10T23:40:55.290
Event type            : Pgt
: Titan occs: geocentric, topocentric
: Not a ringed target
Observer code         : PIC
Location              : Pic du Midi
Latitude (deg)       : 42.93656
E. Longitude (deg)   : 0.14231
Altitude (km)        : 2.890
Gaia source ID       : 49815371458307328
2Mass ID (if available) : 03592772+1840438
ICRS Star Coord at Epoch: 03h 59m 27.72428s +18:40:43.98245s
RUWE (>1.4 is poor) : 1.24
K magnitude           : 8.126
G magnitude           : 11.096
RP magnitude         : 10.216
BP magnitude         : 11.914
DUPflag              : 0
Distance (au)        : 8.838
f0 (km)              : 0.00
g0 (km)              : 0.00
skyplane vel. (km/s) : 7.91
Sun-Target sep (deg) : 99.99
Sun-Moon sep (deg)   : 120.93
B (ring opening deg) : -24.82
PA of pole (deg)     : -2.52
Pole direction: RA (deg): 39.48270
Dec (deg): 83.42790
C/A sky separation (") : 0.366
C/A sky separation (km) : 2348.2
NAIF SPICE kernels   : RAJobs_U111+rgf16.spk
URKALLv1.spk
naif0012.tls
nep097.bsp
nep101.bsp
sat4401.bsp
de440.bsp
earth_720101_070426.bpc
jup365.bsp
urall6.bsp
IAU_SATURN_for_RINGFIT.tpc
pck00010.tpc
earth_200101_990628_predict.bpc
IAU_NEPTUNE_for_RINGFIT.tpc.BECAREFUL
uranus_ringframes_rfrench20220627_v1.tf
neptune_ringframes_rfrench20220702a_v1.tf
earth_flat_IAU.spk

```

x: target alt < 5.0 deg or sun > -5.0 deg

Target	I/E	UTC	alt	alt-sun	radius	lat-geo	lat-geodetic
Titan	I	2031-02-10T23:38:40.406	23.22	-60.44	2575.1	55.86	55.87
Titan	E	2031-02-10T23:43:10.047	22.39	-60.67	2575.1	55.86	55.87



```

target                : Titan
target radius (km)   : 2575.15
C/A epoch             : 2031-02-10T23:41:23.870
Event type            : Pgt
: Titan occs: geocentric, topocentric
: Not a ringed target
Observer code        : TEN
Location              : Teide Obs./Tenerife
Latitude (deg)       : 28.30050
E. Longitude (deg)   : 343.48909
Altitude (km)        : 2.395
Gaia source ID       : 49815371458307328
2Mass ID (if available) : 03592772+1840438
ICRS Star Coord at Epoch: 03h 59m 27.72428s +18:40:43.98245s
RUWE (>1.4 is poor) : 1.24
K magnitude           : 8.126
G magnitude           : 11.096
RP magnitude          : 10.216
BP magnitude          : 11.914
DUPflag              : 0
Distance (au)        : 8.838
f0 (km)              : 0.00
g0 (km)              : 0.00
skyplane vel. (km/s) : 7.91
Sun-Target sep (deg) : 99.99
Sun-Moon sep (deg)   : 121.09
B (ring opening deg) : -24.82
PA of pole (deg)     : -2.52
Pole direction: RA (deg): 39.48270
Dec (deg): 83.42790
C/A sky separation ("): 0.083
C/A sky separation (km): 532.0
NAIF SPICE kernels   : RAJobs_U111+rgf16.spk
URKALLv1.spk
naif0012.tls
nep097.bsp
nep101.bsp
sat4401.bsp
de440.bsp
earth_720101_070426.bpc
jup365.bsp
urall6.bsp
IAU_SATURN_for_RINGFIT.tpc
pck00010.tpc
earth_200101_990628_predict.bpc
IAU_NEPTUNE_for_RINGFIT.tpc.BECAREFUL
uranus_ringframes_rfrench20220627_v1.tf
neptune_ringframes_rfrench20220702a_v1.tf
earth_flat_IAU.spk

```

x: target alt < 5.0 deg or sun > -5.0 deg

Target	I/E	UTC	alt	alt-sun	radius	lat-geo	lat-geodetic
Titan	I	2031-02-10T23:35:56.876	36.43	-62.07	2575.1	10.79	10.79
Titan	E	2031-02-10T23:46:50.156	34.03	-64.22	2575.1	10.81	10.82

