

target : Titan
 target radius (km) : 2575.15
 C/A epoch : 2031-03-27T07:55:48.090
 Event type : P
 : Titan occs: not geocentric or topocentric
 : Not a ringed target
 Gaia source ID : 48775435320158976
 2Mass ID (if available) : 04092627+1921219

ICRS Star Coord at Epoch: 04h 09m 26.28951s +19°21'21.31542s
 RUWE (>1.4 is poor) : 0.89
 K magnitude : 14.691
 G magnitude : 18.943
 RP magnitude : 17.735
 BP magnitude : 20.468
 DUPflag : 0
 Distance (au) : 9.535
 f0 (km) : 0.00
 g0 (km) : 0.00
 skyplane vel. (km/s) : 21.38
 Sun-Target sep (deg) : 58.02
 Sun-Moon sep (deg) : 8.65
 B (ring opening deg) : -25.39
 PA of pole (deg) : -2.82
 Pole direction: RA (deg): 39.48270
 Dec (deg): 83.42790
 C/A sky separation (") : 1.227
 C/A sky separation (km) : 8485.7
 NAIF SPICE kernels : RAJobs_U111+rgf16.spk

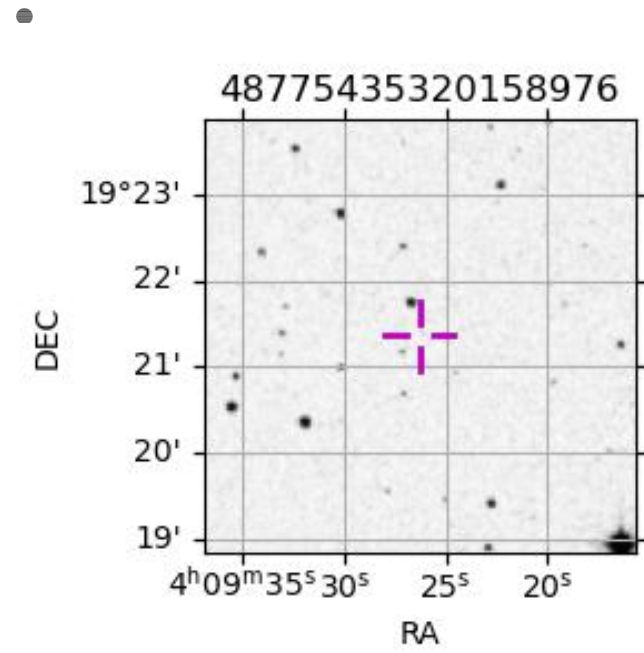
Titan 2031-03-27T07:55:48 K14.69 G18.94 dots 60.0 sec
 P



2031-03-27T07:55:48.0900 α : 04 09 26.2895 δ : +19 21 21.315 C/A 1.226" PA 169.85 deg v_{sky} +21.38 km/s D 09.54 AU
 Credit: Styled after SORA/Lucky Star

URKALLv1.spk
 naif0012.tls
 nep097.bsp
 nep101.bsp
 sat4401.bsp
 Observable events with sun below -5 deg and altitude above 5 deg

Obs	Location	lat	Elon	Target	Observed Events	Interval	OEcode
PIC	Pic du Midi	42.9	0.1				Pnn
PAL	Palomar Mt (200")	33.4	243.1				Pnn
PMO	Purple Mtn Obs. Nanking	32.1	118.8				Pnn
KPNO	Kitt Peak Natl Obs	32.0	248.4				Pnn
MCD	McDonald Obs. 2.7m	30.7	256.0				Pnn
TEN	Teide Obs./Tenerife	28.3	343.5				Pnn
IRTF	Mauna Kea/IRTF	19.8	204.5				Pnn
KAV	Kavalur Observatory	12.6	78.8				Pnn
RIO	Rio de Janeiro	-22.9	316.8				Pnn
ESO	European Southern Obs. (3.6m)	-29.3	289.3				Pnn
AAT	Siding Spring (AAT)	-31.3	149.1				Pnn
SAAO	So. Afr. Astro. Obs. (Sutherland)	-32.4	20.8				Pnn
MSO	Mt. Stromlo Observatory	-35.3	149.0				Pnn



48775435320158976