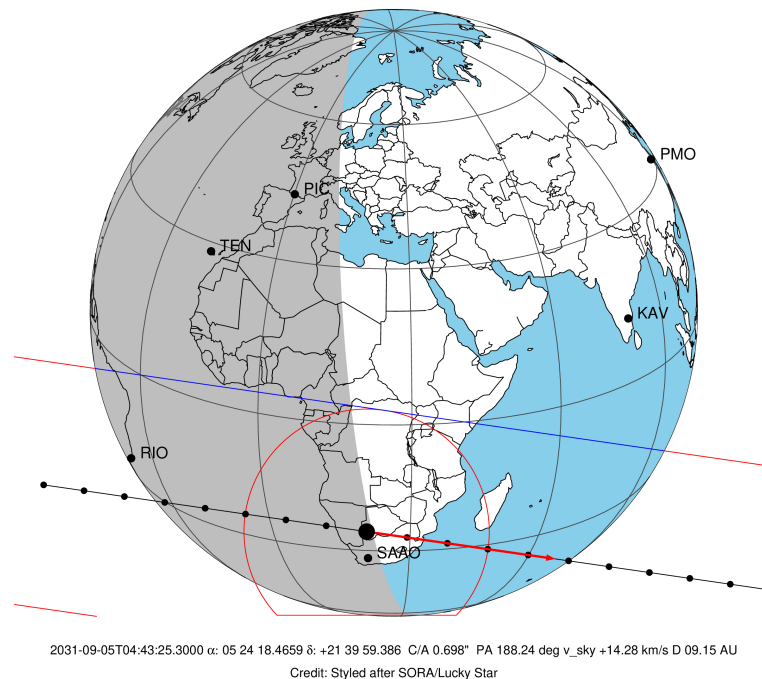


target : Titan
 target radius (km) : 2575.15
 C/A epoch : 2031-09-05T04:43:25.300
 Event type : Pt
 : Titan occs: topocentric, not geocentric
 : Not a ringed target
 Gaia source ID : 3414444303913465856
 2Mass ID (if available) : 05241846+2139594

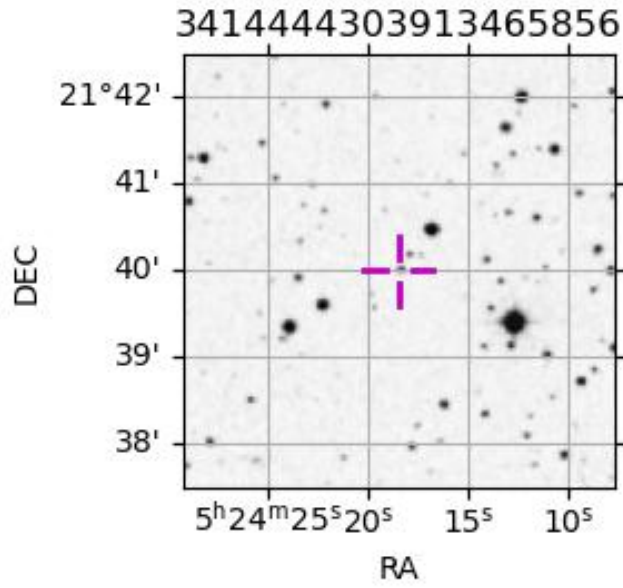
ICRS Star Coord at Epoch: 05h 24m 18.46587s +21:39:59.38640s
 RUWE (>1.4 is poor) : 1.06
 K magnitude : 14.426
 G magnitude : 16.542
 RP magnitude : 15.800
 BP magnitude : 17.109
 DUPflag : 0
 Distance (au) : 9.150
 f0 (km) : 0.00
 g0 (km) : 0.00
 skyplane vel. (km/s) : 14.28
 Sun-Target sep (deg) : 80.30
 Sun-Moon sep (deg) : 50.08
 B (ring opening deg) : -26.51
 PA of pole (deg) : -4.87
 Pole direction: RA (deg): 39.48270
 Dec (deg): 83.42790
 C/A sky separation (") : 0.702
 C/A sky separation (km) : 4657.7
 NAIF SPICE kernels : RAJobs_U111+rgf16.spk

Titan 2031-09-05T04:43:25 K14.43 G16.54 dots 60.0 sec
 Pt



Observable events with sun below -5 deg and altitude above 5 deg

Obs	Location	lat	Elon	Target	Observed Events Interval	OCode
PIC	Pic du Midi	42.9	0.1			Pnn
PAL	Palomar Mt (200")	33.4	243.1			Pnn
PMO	Purple Mtn Obs. Nanking	32.1	118.8			Pnn
KPNO	Kitt Peak Natl Obs	32.0	248.4			Pnn
MCD	McDonald Obs. 2.7m	30.7	256.0			Pnn
TEN	Teide Obs./Tenerife	28.3	343.5			Pnn
IRTF	Mauna Kea/IRTF	19.8	204.5			Pnn
KAV	Kavalur Observatory	12.6	78.8			Pnn
RIO	Rio de Janeiro	-22.9	316.8	+ +	SEP 05 04:34 - SEP 05 04:40	Pie
ESO	European Southern Obs. (3.6m)	-29.3	289.3			Pnn
AAT	Siding Spring (AAT)	-31.3	149.1			Pnn
SAAO	So. Afr. Astro. Obs. (Sutherland)	-32.4	20.8			Pnn
MSO	Mt. Stromlo Observatory	-35.3	149.0			Pnn



```

target                : Titan
target radius (km)   : 2575.15
C/A epoch             : 2031-09-05T04:37:30.710
Event type            : Pt
: Titan occs: topocentric, not geocentric
: Not a ringed target
Observer code        : RIO
Location              : Rio de Janeiro
Latitude (deg)       : -22.89506
E. Longitude (deg)   : 316.77708
Altitude (km)        : 0.033
Gaia source ID       : 3414444303913465856
2Mass ID (if available) : 05241846+2139594
ICRS Star Coord at Epoch: 05h 24m 18.46587s +21:39:59.38640s
RUWE (>1.4 is poor) : 1.06
K magnitude           : 14.426
G magnitude           : 16.542
RP magnitude          : 15.800
BP magnitude          : 17.109
DUPflag              : 0
Distance (au)        : 9.150
f0 (km)               : 0.00
g0 (km)               : 0.00
skyplane vel. (km/s) : 14.28
Sun-Target sep (deg) : 80.30
Sun-Moon sep (deg)   : 49.66
B (ring opening deg) : -26.51
PA of pole (deg)     : -4.87
Pole direction: RA (deg): 39.48270
Dec (deg): 83.42790
C/A sky separation (") : 0.133
C/A sky separation (km) : 885.5
NAIF SPICE kernels   : RAJobs_U111+rgf16.spk
URKALLv1.spk
naif0012.tls
nep097.bsp
nep101.bsp
sat4401.bsp
de440.bsp
earth_720101_070426.bpc
jup365.bsp
urall6.bsp
IAU_SATURN_for_RINGFIT.tpc
pck00010.tpc
earth_200101_990628_predict.bpc
IAU_NEPTUNE_for_RINGFIT.tpc.BECAREFUL
uranus_ringframes_rfrench20220627_v1.tf
neptune_ringframes_rfrench20220702a_v1.tf
earth_flat_IAU.spk

```

x: target alt < 5.0 deg or sun > -5.0 deg

Target	I/E	UTC	alt	alt-sun	radius	lat-geo	lat-geodetic
Titan	I	2031-09-05T04:34:39.410	6.99	-60.59	2575.2	6.73	6.73
Titan	E	2031-09-05T04:40:22.031	8.16	-59.43	2575.1	28.92	28.93

