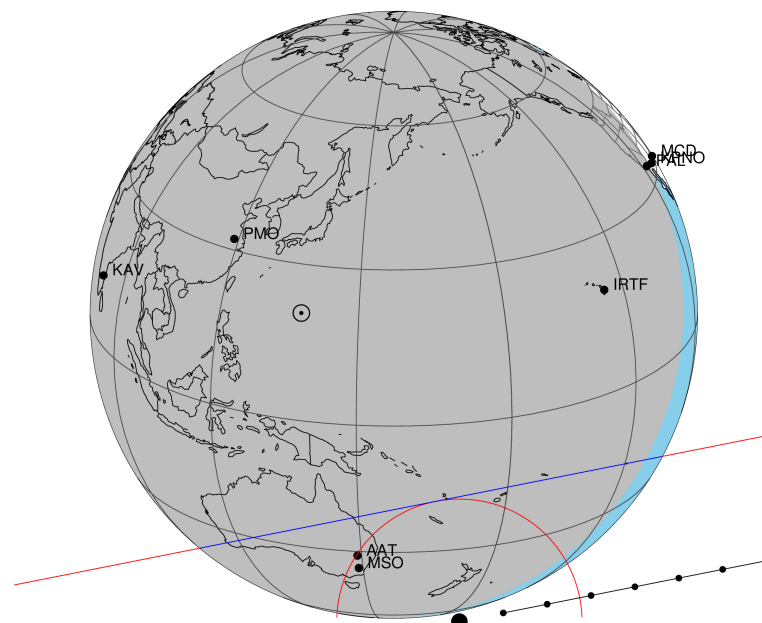


target : Titan  
 target radius (km) : 2575.15  
 C/A epoch : 2031-11-25T14:34:27.090  
 Event type : Pt  
 : Titan occs: topocentric, not geocentric  
 : Not a ringed target  
 Gaia source ID : 3414387365532126080  
 2Mass ID (if available) : 05182516+2128405

ICRS Star Coord at Epoch: 05h 18m 25.17558s +21:28:40.31123s  
 RUWE (>1.4 is poor) : 1.03  
 K magnitude : 14.494  
 G magnitude : 16.971  
 RP magnitude : 16.177  
 BP magnitude : 17.644  
 DUPflag : 0  
 Distance (au) : 8.088  
 f0 (km) : 0.00  
 g0 (km) : 0.00  
 skyplane vel. (km/s) : -15.65  
 Sun-Target sep (deg) : 162.27  
 Sun-Moon sep (deg) : 57.46  
 B (ring opening deg) : -26.43  
 PA of pole (deg) : -4.72  
 Pole direction: RA (deg): 39.48270  
 Dec (deg): 83.42790  
 C/A sky separation (") : 1.123  
 C/A sky separation (km) : 6585.6  
 NAIF SPICE kernels : RAJobs\_U111+rgf16.spk  
 URKALLv1.spk  
 naif0012.tls  
 nep097.bsp  
 nep101.bsp  
 sat4401.bsp

Titan 2031-11-25T14:34:27 K14.49 G16.97 dots 60.0 sec  
 Pt

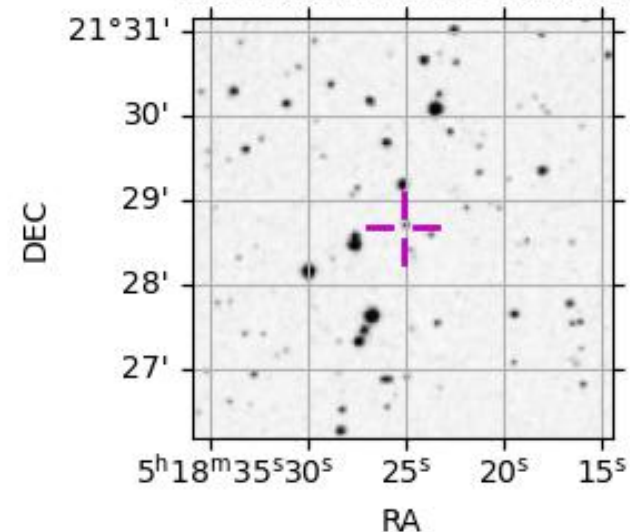


2031-11-25T14:34:27.0900 α: 05 18 25.1756 δ: +21 28 40.311 C/A 1.124" PA 168.77 deg v\_sky -15.65 km/s D 08.09 AU  
 Credit: Styled after SORA/Lucky Star

Observable events with sun below -5 deg and altitude above 5 deg

Obs	Location	lat	Elon	Target	Observed Events Interval	OEcode
PIC	Pic du Midi	42.9	0.1			Pnn
PAL	Palomar Mt (200")	33.4	243.1			Pnn
PMO	Purple Mtn Obs. Nanking	32.1	118.8			Pnn
KPNO	Kitt Peak Natl Obs	32.0	248.4			Pnn
MCD	McDonald Obs. 2.7m	30.7	256.0			Pnn
TEN	Teide Obs./Tenerife	28.3	343.5			Pnn
IRTF	Mauna Kea/IRTF	19.8	204.5			Pnn
KAV	Kavalur Observatory	12.6	78.8			Pnn
RIO	Rio de Janeiro	-22.9	316.8			Pnn
ESO	European Southern Obs. (3.6m)	-29.3	289.3			Pnn
AAT	Siding Spring (AAT)	-31.3	149.1	+ +	NOV 25 14:34 - NOV 25 14:38	Pie
SAAO	So. Afr. Astro. Obs. (Sutherland)	-32.4	20.8			Pnn
MSO	Mt. Stromlo Observatory	-35.3	149.0	+ +	NOV 25 14:34 - NOV 25 14:38	Pie

3414387365532126080



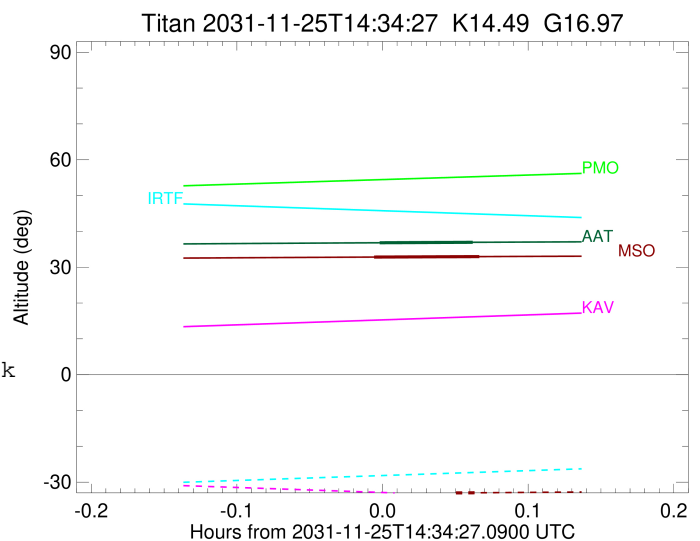
```

target                : Titan
target radius (km)   : 2575.15
C/A epoch             : 2031-11-25T14:36:14.810
Event type            : Pt
: Titan occs: topocentric, not geocentric
: Not a ringed target
Observer code         : AAT
Location              : Siding Spring (AAT)
Latitude (deg)        : -31.27703
E. Longitude (deg)    : 149.06608
Altitude (km)         : 1.164
Gaia source ID        : 3414387365532126080
2Mass ID (if available) : 05182516+2128405
ICRS Star Coord at Epoch: 05h 18m 25.17558s +21:28:40.31123s
RUWE (>1.4 is poor) : 1.03
K magnitude           : 14.494
G magnitude           : 16.971
RP magnitude          : 16.177
BP magnitude          : 17.644
DUPflag              : 0
Distance (au)         : 8.088
f0 (km)               : 0.00
g0 (km)               : 0.00
skyplane vel. (km/s) : -15.65
Sun-Target sep (deg)  : 162.27
Sun-Moon sep (deg)    : 57.89
B (ring opening deg) : -26.43
PA of pole (deg)      : -4.72
Pole direction: RA (deg): 39.48270
Dec (deg): 83.42790
C/A sky separation (") : 0.302
C/A sky separation (km) : 1770.7
NAIF SPICE kernels    : RAJobs_U111+rgf16.spk
URKALLv1.spk
naif0012.tls
nep097.bsp
nep101.bsp
sat4401.bsp
de440.bsp
earth_720101_070426.bpc
jup365.bsp
urall6.bsp
IAU_SATURN_for_RINGFIT.tpc
pck00010.tpc
earth_200101_990628_predict.bpc
IAU_NEPTUNE_for_RINGFIT.tpc.BECAREFUL
uranus_ringframes_rfrench20220627_v1.tf
neptune_ringframes_rfrench20220702a_v1.tf
earth_flat_IAU.spk

```

x: target alt < 5.0 deg or sun > -5.0 deg

Target	I/E	UTC	alt	alt-sun	radius	lat-geo	lat-geodetic
Titan	I	2031-11-25T14:34:18.196	36.82	-37.07	2575.1	32.84	32.86
Titan	E	2031-11-25T14:38:11.430	36.94	-36.88	2575.1	43.00	43.02



```

target                : Titan
target radius (km)   : 2575.15
C/A epoch             : 2031-11-25T14:36:16.100
Event type            : Pt
: Titan occs: topocentric, not geocentric
: Not a ringed target
Observer code         : MSO
Location              : Mt. Stromlo Observatory
Latitude (deg)       : -35.32000
E. Longitude (deg)   : 149.00833
Altitude (km)        : 0.770
Gaia source ID       : 3414387365532126080
2Mass ID (if available) : 05182516+2128405
ICRS Star Coord at Epoch: 05h 18m 25.17558s +21:28:40.31123s
RUWE (>1.4 is poor) : 1.03
K magnitude           : 14.494
G magnitude           : 16.971
RP magnitude          : 16.177
BP magnitude          : 17.644
DUPflag              : 0
Distance (au)        : 8.088
f0 (km)              : 0.00
g0 (km)              : 0.00
skyplane vel. (km/s) : -15.65
Sun-Target sep (deg) : 162.27
Sun-Moon sep (deg)   : 57.84
B (ring opening deg) : -26.43
PA of pole (deg)     : -4.72
Pole direction: RA (deg): 39.48270
Dec (deg): 83.42790
C/A sky separation (") : 0.258
C/A sky separation (km) : 1511.5
NAIF SPICE kernels   : RAJobs_U111+rgf16.spk
URKALLv1.spk
naif0012.tls
nep097.bsp
nep101.bsp
sat4401.bsp
de440.bsp
earth_720101_070426.bpc
jup365.bsp
urall6.bsp
IAU_SATURN_for_RINGFIT.tpc
pck00010.tpc
earth_200101_990628_predict.bpc
IAU_NEPTUNE_for_RINGFIT.tpc.BECAREFUL
uranus_ringframes_rfrench20220627_v1.tf
neptune_ringframes_rfrench20220702a_v1.tf
earth_flat_IAU.spk

```

x: target alt < 5.0 deg or sun > -5.0 deg

Target	I/E	UTC	alt	alt-sun	radius	lat-geo	lat-geodetic
Titan	I	2031-11-25T14:34:05.928	32.82	-33.15	2575.1	26.39	26.40
Titan	E	2031-11-25T14:38:26.286	32.95	-32.96	2575.1	36.91	36.93

