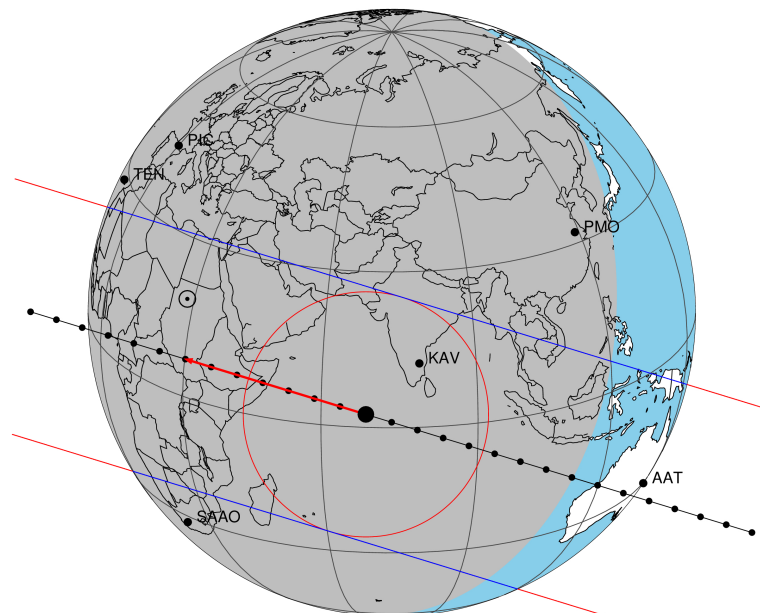


target : Titan
 target radius (km) : 2575.15
 C/A epoch : 2032-11-15T21:51:57.650
 Event type : Pgt
 : Titan occs: geocentric, topocentric
 : Not a ringed target
 Gaia source ID : 3376407729944551424
 2Mass ID (if available) : 06261017+2217009

ICRS Star Coord at Epoch: 06h 26m 10.17712s +22:17:01.11064s
 RUWE (>1.4 is poor) : 0.94
 K magnitude : 14.865
 G magnitude : 16.679
 RP magnitude : 16.084
 BP magnitude : 17.104
 DUPflag : 0
 Distance (au) : 8.265
 f0 (km) : 0.00
 g0 (km) : 0.00
 skyplane vel. (km/s) : -9.43
 Sun-Target sep (deg) : 137.57
 Sun-Moon sep (deg) : 60.28
 B (ring opening deg) : -25.74
 PA of pole (deg) : -6.12
 Pole direction: RA (deg): 39.48270
 Dec (deg): 83.42790
 C/A sky separation (") : 0.373
 C/A sky separation (km) : 2233.5
 NAIF SPICE kernels : RAJobs_U111+rgf16.spk

Titan 2032-11-15T21:51:57 K14.87 G16.68 dots 60.0 sec
 Pgt

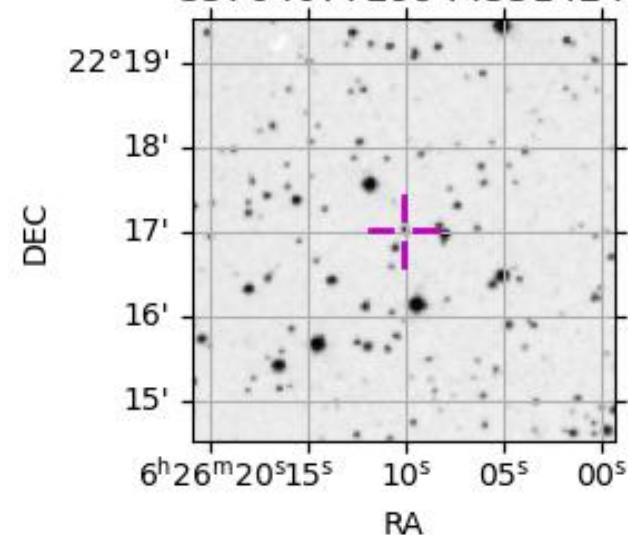


2032-11-15T21:51:57.6500 cc: 06 26 10.1771 & +22 17 01.111 C/A 0.367" PA 197.03 deg v_sky - 9.43 km/s D 08.26 AU
 Credit: Styled after SORA/Lucky Star

Observable events with sun below -5 deg and altitude above 5 deg

Obs	Location	lat	Elon	Target	Observed Events Interval	OEcode
PIC	Pic du Midi	42.9	0.1			Pnn
PAL	Palomar Mt (200")	33.4	243.1			Pnn
PMO	Purple Mtn Obs. Nanking	32.1	118.8			Pnn
KPNO	Kitt Peak Natl Obs	32.0	248.4			Pnn
MCD	McDonald Obs. 2.7m	30.7	256.0			Pnn
TEN	Teide Obs./Tenerife	28.3	343.5			Pnn
IRTF	Mauna Kea/IRTF	19.8	204.5			Pnn
KAV	Kavalur Observatory	12.6	78.8	+ +	NOV 15 21:46 - NOV 15 21:54	Pie
RIO	Rio de Janeiro	-22.9	316.8			Pnn
ESO	European Southern Obs. (3.6m)	-29.3	289.3			Pnn
AAT	Siding Spring (AAT)	-31.3	149.1			Pnn
SAAO	So. Afr. Astro. Obs. (Sutherland)	-32.4	20.8			Pnn
MSO	Mt. Stromlo Observatory	-35.3	149.0			Pnn

3376407729944551424



```

target                : Titan
target radius (km)   : 2575.15
C/A epoch             : 2032-11-15T21:50:27.410
Event type            : Pgt
: Titan occs: geocentric, topocentric
: Not a ringed target
Observer code         : KAV
Location              : Kavalur Observatory
Latitude (deg)        : 12.57556
E. Longitude (deg)    : 78.83167
Altitude (km)         : 0.722
Gaia source ID        : 3376407729944551424
2Mass ID (if available) : 06261017+2217009
ICRS Star Coord at Epoch: 06h 26m 10.17712s +22:17:01.11064s
RUWE (>1.4 is poor)  : 0.94
K magnitude           : 14.865
G magnitude           : 16.679
RP magnitude          : 16.084
BP magnitude          : 17.104
DUPflag              : 0
Distance (au)         : 8.265
f0 (km)               : 0.00
g0 (km)               : 0.00
skyplane vel. (km/s) : -9.43
Sun-Target sep (deg)  : 137.57
Sun-Moon sep (deg)    : 61.18
B (ring opening deg)  : -25.74
PA of pole (deg)      : -6.12
Pole direction: RA (deg): 39.48270
Dec (deg): 83.42790
C/A sky separation (") : 0.228
C/A sky separation (km) : 1367.6
NAIF SPICE kernels    : RAJobs_U111+rgf16.spk
URKALLv1.spk
naif0012.tls
nep097.bsp
nep101.bsp
sat4401.bsp
de440.bsp
earth_720101_070426.bpc
jup365.bsp
urall6.bsp
IAU_SATURN_for_RINGFIT.tpc
pck00010.tpc
earth_200101_990628_predict.bpc
IAU_NEPTUNE_for_RINGFIT.tpc.BECAREFUL
uranus_ringframes_rfrench20220627_v1.tf
neptune_ringframes_rfrench20220702a_v1.tf
earth_flat_IAU.spk

```

x: target alt < 5.0 deg or sun > -5.0 deg

Target	I/E	UTC	alt	alt-sun	radius	lat-geo	lat-geodetic
Titan	I	2032-11-15T21:46:46.032	79.51	-42.21	2575.0	47.07	47.09
Titan	E	2032-11-15T21:54:08.714	78.74	-40.47	2575.2	8.82	8.82

