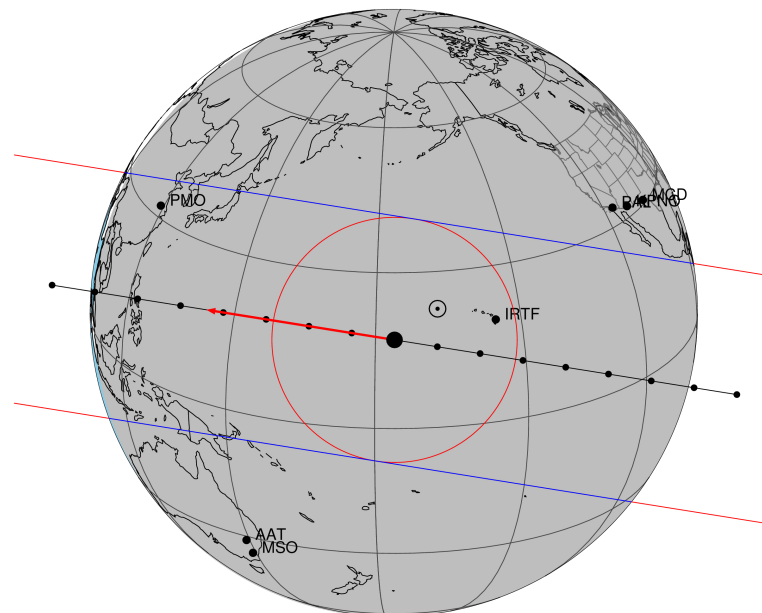


target : Titan  
 target radius (km) : 2575.15  
 C/A epoch : 2033-01-01T11:13:08.300  
 Event type : Pgt  
 : Titan occs: geocentric, topocentric  
 : Not a ringed target  
 Gaia source ID : 3425014871266342144  
 2Mass ID (if available) : 06112356+2226091

ICRS Star Coord at Epoch: 06h 11m 23.56723s +22:26:09.09219s  
 RUWE (>1.4 is poor) : 1.01  
 K magnitude : 13.191  
 G magnitude : 15.043  
 RP magnitude : 14.429  
 BP magnitude : 15.493  
 DUPflag : 0  
 Distance (au) : 8.048  
 f0 (km) : 0.00  
 g0 (km) : 0.00  
 skyplane vel. (km/s) : -15.17  
 Sun-Target sep (deg) : 171.68  
 Sun-Moon sep (deg) : 170.42  
 B (ring opening deg) : -26.25  
 PA of pole (deg) : -5.88  
 Pole direction: RA (deg): 39.48270  
 Dec (deg): 83.42790  
 C/A sky separation (") : 0.099  
 C/A sky separation (km) : 580.7  
 NAIF SPICE kernels : RAJobs\_U111+rgf16.spk  
 URKALLv1.spk  
 naif0012.tls  
 nep097.bsp  
 nep101.bsp  
 sat4401.bsp

Titan 2033-01-01T11:13:08 K13.19 G15.04 dots 60.0 sec  
 Pgt

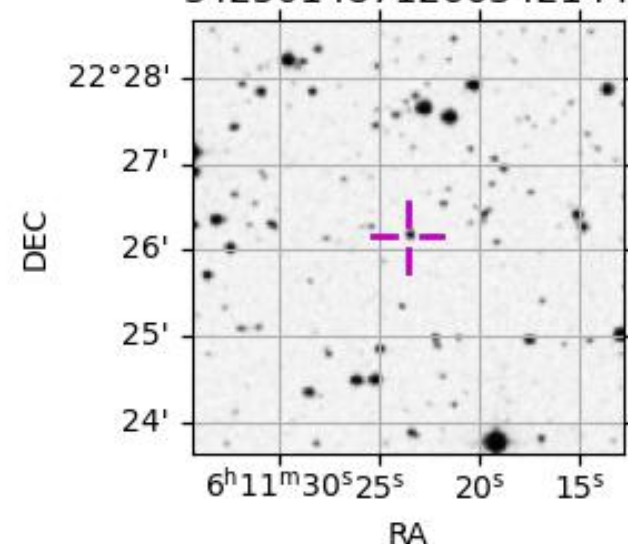


2033-01-01T11:13:08.3000 α: 06 11 23.5672 δ: +22 26 09.092 C/A 0.096" PA 189.08 deg v\_sky -15.17 km/s D 08.05 AU  
 Credit: Styled after SORA/Lucky Star

Observable events with sun below -5 deg and altitude above 5 deg

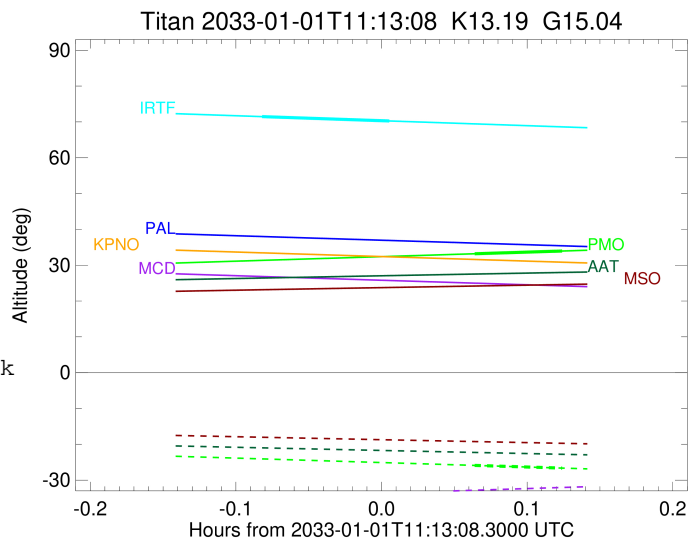
Obs	Location	lat	Elon	Target	Observed Events Interval	OEcode
PIC	Pic du Midi	42.9	0.1			Pnn
PAL	Palomar Mt (200")	33.4	243.1			Pnn
PMO	Purple Mtn Obs. Nanking	32.1	118.8	+ +	JAN 01 11:16 - JAN 01 11:20	Pie
KPNO	Kitt Peak Natl Obs	32.0	248.4			Pnn
MCD	McDonald Obs. 2.7m	30.7	256.0			Pnn
TEN	Teide Obs./Tenerife	28.3	343.5			Pnn
IRTF	Mauna Kea/IRTF	19.8	204.5	+ +	JAN 01 11:08 - JAN 01 11:13	Pie
KAV	Kavalur Observatory	12.6	78.8			Pnn
RIO	Rio de Janeiro	-22.9	316.8			Pnn
ESO	European Southern Obs. (3.6m)	-29.3	289.3			Pnn
AAT	Siding Spring (AAT)	-31.3	149.1			Pnn
SAAO	So. Afr. Astro. Obs. (Sutherland)	-32.4	20.8			Pnn
MSO	Mt. Stromlo Observatory	-35.3	149.0			Pnn

3425014871266342144



```

target                : Titan
target radius (km)   : 2575.15
C/A epoch            : 2033-01-01T11:18:47.230
Event type           : Pgt
: Titan occs: geocentric, topocentric
: Not a ringed target
Observer code        : PMO
Location             : Purple Mtn Obs. Nanking
Latitude (deg)       : 32.06667
E. Longitude (deg)   : 118.82089
Altitude (km)        : 0.364
Gaia source ID       : 3425014871266342144
2Mass ID (if available) : 06112356+2226091
ICRS Star Coord at Epoch: 06h 11m 23.56723s +22:26:09.09219s
RUWE (>1.4 is poor) : 1.01
K magnitude           : 13.191
G magnitude           : 15.043
RP magnitude          : 14.429
BP magnitude          : 15.493
DUPflag              : 0
Distance (au)         : 8.048
f0 (km)               : 0.00
g0 (km)               : 0.00
skyplane vel. (km/s) : -15.17
Sun-Target sep (deg) : 171.68
Sun-Moon sep (deg)   : 171.33
B (ring opening deg) : -26.25
PA of pole (deg)     : -5.88
Pole direction: RA (deg): 39.48270
Dec (deg): 83.42790
C/A sky separation ("): 0.336
C/A sky separation (km): 1958.9
NAIF SPICE kernels   : RAJobs_U111+rgf16.spk
URKALLv1.spk
naif0012.tls
nep097.bsp
nep101.bsp
sat4401.bsp
de440.bsp
earth_720101_070426.bpc
jup365.bsp
urall6.bsp
IAU_SATURN_for_RINGFIT.tpc
pck00010.tpc
earth_200101_990628_predict.bpc
IAU_NEPTUNE_for_RINGFIT.tpc.BECAREFUL
uranus_ringframes_rfrench20220627_v1.tf
neptune_ringframes_rfrench20220702a_v1.tf
earth_flat_IAU.spk
    
```



```

x: target alt < 5.0 deg or sun > -5.0 deg
Target I/E UTC alt alt-sun radius lat-geo lat-geodetic
-----
Titan I 2033-01-01T11:16:58.453 33.19 -25.89 2575.0 54.31 54.32
Titan E 2033-01-01T11:20:35.980 33.96 -26.64 2575.2 30.24 30.25
    
```

```

target                : Titan
target radius (km)   : 2575.15
C/A epoch            : 2033-01-01T11:10:50.500
Event type           : Pgt
: Titan occs: geocentric, topocentric
: Not a ringed target
Observer code        : IRTF
Location             : Mauna Kea/IRTF
Latitude (deg)       : 19.82622
E. Longitude (deg)  : 204.52800
Altitude (km)        : 4.168
Gaia source ID       : 3425014871266342144
2Mass ID (if available) : 06112356+2226091
ICRS Star Coord at Epoch: 06h 11m 23.56723s +22:26:09.09219s
RUWE (>1.4 is poor) : 1.01
K magnitude           : 13.191
G magnitude           : 15.043
RP magnitude          : 14.429
BP magnitude          : 15.493
DUPflag              : 0
Distance (au)         : 8.048
f0 (km)              : 0.00
g0 (km)              : 0.00
skyplane vel. (km/s) : -15.17
Sun-Target sep (deg) : 171.68
Sun-Moon sep (deg)   : 170.27
B (ring opening deg) : -26.25
PA of pole (deg)     : -5.88
Pole direction: RA (deg): 39.48270
Dec (deg): 83.42790
C/A sky separation (") : 0.130
C/A sky separation (km) : 759.3
NAIF SPICE kernels   : RAJobs_U111+rgf16.spk
URKALLv1.spk
naif0012.tls
nep097.bsp
nep101.bsp
sat4401.bsp
de440.bsp
earth_720101_070426.bpc
jup365.bsp
urall6.bsp
IAU_SATURN_for_RINGFIT.tpc
pck00010.tpc
earth_200101_990628_predict.bpc
IAU_NEPTUNE_for_RINGFIT.tpc.BECAREFUL
uranus_ringframes_rfrench20220627_v1.tf
neptune_ringframes_rfrench20220702a_v1.tf
earth_flat_IAU.spk

```

x: target alt < 5.0 deg or sun > -5.0 deg

Target	I/E	UTC	alt	alt-sun	radius	lat-geo	lat-geodetic
Titan	I	2033-01-01T11:08:12.376	71.47	-79.55	2575.1	28.08	28.09
Titan	E	2033-01-01T11:13:28.623	70.25	-78.38	2575.2	2.37	2.37

