

target : Titan
 target radius (km) : 2575.15
 C/A epoch : 2033-04-09T22:41:12.440
 Event type : Pgt
 : Titan occs: geocentric, topocentric
 : Not a ringed target
 Gaia source ID : 3423807435698675712
 2Mass ID (if available) : 06051127+2245226

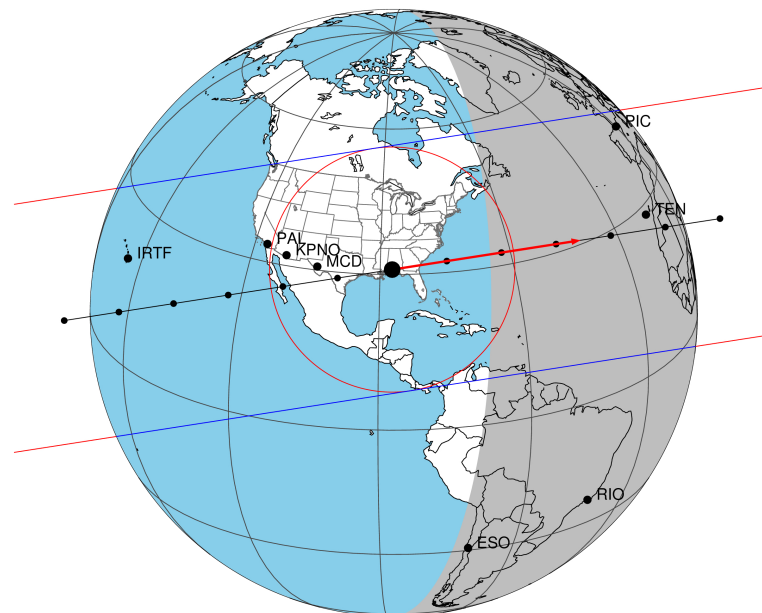
ICRS Star Coord at Epoch: 06h 05m 11.26640s +22:45:22.70214s
 RUWE (>1.4 is poor) : 1.03
 K magnitude : 14.170
 G magnitude : 16.870
 RP magnitude : 15.998
 BP magnitude : 17.637
 DUPflag : 0
 Distance (au) : 9.289
 f0 (km) : 0.00
 g0 (km) : 0.00
 skyplane vel. (km/s) : 19.35
 Sun-Target sep (deg) : 71.27
 Sun-Moon sep (deg) : 55.99
 B (ring opening deg) : -26.71
 PA of pole (deg) : -5.78
 Pole direction: RA (deg): 39.48270
 Dec (deg): 83.42790
 C/A sky separation (") : 0.136
 C/A sky separation (km) : 913.8
 NAIF SPICE kernels : RAJobs_U111+rgf16.spk

URKALLv1.spk
 naif0012.tls
 nep097.bsp
 nep101.bsp
 sat4401.bsp

Observable events with sun below -5 deg and altitude above 5 deg

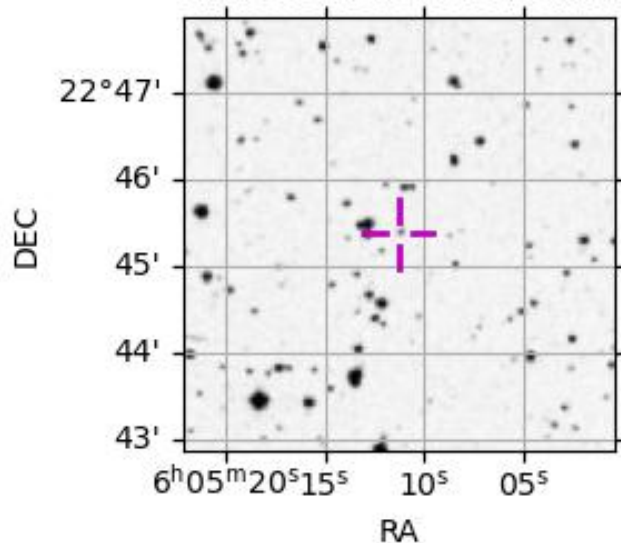
Obs	Location	lat	Elon	Target	Observed Events Interval	OEcode
PIC	Pic du Midi	42.9	0.1	+ +	APR 09 22:44 - APR 09 22:46	Pie
PAL	Palomar Mt (200")	33.4	243.1			Pnn
PMO	Purple Mtn Obs. Nanking	32.1	118.8			Pnn
KPNO	Kitt Peak Natl Obs	32.0	248.4			Pnn
MCD	McDonald Obs. 2.7m	30.7	256.0			Pnn
TEN	Teide Obs./Tenerife	28.3	343.5	+ +	APR 09 22:43 - APR 09 22:48	Pie
IRTF	Mauna Kea/IRTF	19.8	204.5			Pnn
KAV	Kavalur Observatory	12.6	78.8			Pnn
RIO	Rio de Janeiro	-22.9	316.8			Pnn
ESO	European Southern Obs. (3.6m)	-29.3	289.3			Pnn
AAT	Siding Spring (AAT)	-31.3	149.1			Pnn
SAAO	So. Afr. Astro. Obs. (Sutherland)	-32.4	20.8			Pnn
MSO	Mt. Stromlo Observatory	-35.3	149.0			Pnn

Titan 2033-04-09T22:41:12 K14.17 G16.87 dots 60.0 sec
 Pgt



2033-04-09T22:41:12.4400 α: 06 05 11.2664 δ: +22 45 22.702 C/A 0.134" PA 351.15 deg v_sky +19.35 km/s D 09.29 AU
 Credit: Styled after SORA/Lucky Star

3423807435698675712



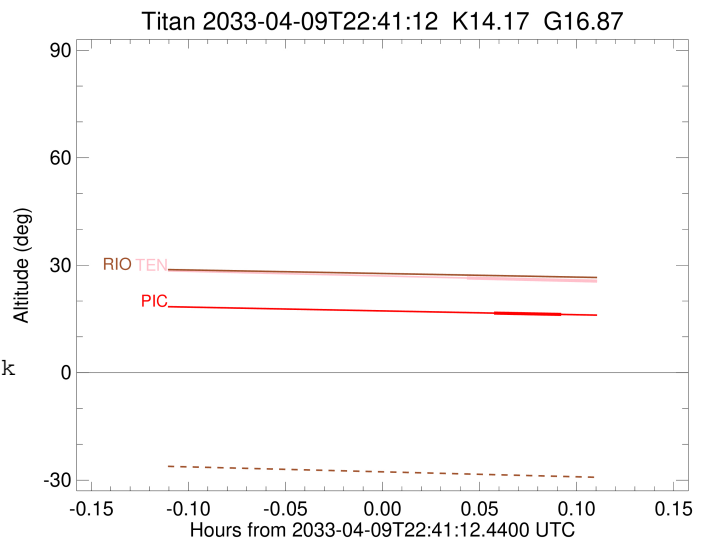
```

target                : Titan
target radius (km)   : 2575.15
C/A epoch            : 2033-04-09T22:45:41.150
Event type           : Pgt
: Titan occs: geocentric, topocentric
: Not a ringed target
Observer code        : PIC
Location             : Pic du Midi
Latitude (deg)       : 42.93656
E. Longitude (deg)   : 0.14231
Altitude (km)        : 2.890
Gaia source ID       : 3423807435698675712
2Mass ID (if available) : 06051127+2245226
ICRS Star Coord at Epoch: 06h 05m 11.26640s +22:45:22.70214s
RUWE (>1.4 is poor) : 1.03
K magnitude          : 14.170
G magnitude          : 16.870
RP magnitude         : 15.998
BP magnitude         : 17.637
DUPflag             : 0
Distance (au)        : 9.290
f0 (km)              : 0.00
g0 (km)              : 0.00
skyplane vel. (km/s) : 19.35
Sun-Target sep (deg) : 71.27
Sun-Moon sep (deg)   : 55.87
B (ring opening deg) : -26.71
PA of pole (deg)     : -5.78
Pole direction: RA (deg): 39.48270
Dec (deg): 83.42790
C/A sky separation ("): 0.337
C/A sky separation (km): 2271.8
NAIF SPICE kernels   : RAJobs_U111+rgf16.spk
URKALLv1.spk
naif0012.tls
nep097.bsp
nep101.bsp
sat4401.bsp
de440.bsp
earth_720101_070426.bpc
jup365.bsp
urall6.bsp
IAU_SATURN_for_RINGFIT.tpc
pck00010.tpc
earth_200101_990628_predict.bpc
IAU_NEPTUNE_for_RINGFIT.tpc.BECAREFUL
uranus_ringframes_rfrench20220627_v1.tf
neptune_ringframes_rfrench20220702a_v1.tf
earth_flat_IAU.spk

```

x: target alt < 5.0 deg or sun > -5.0 deg

Target	I/E	UTC	alt	alt-sun	radius	lat-geo	lat-geodetic
Titan	I	2033-04-09T22:44:38.384	16.63	-36.40	2575.1	53.79	53.81
Titan	E	2033-04-09T22:46:43.912	16.26	-36.55	2575.1	50.13	50.14



```

target                : Titan
target radius (km)   : 2575.15
C/A epoch             : 2033-04-09T22:46:01.300
Event type            : Pgt
: Titan occs: geocentric, topocentric
: Not a ringed target
Observer code         : TEN
Location              : Teide Obs./Tenerife
Latitude (deg)        : 28.30050
E. Longitude (deg)    : 343.48909
Altitude (km)         : 2.395
Gaia source ID        : 3423807435698675712
2Mass ID (if available) : 06051127+2245226
ICRS Star Coord at Epoch: 06h 05m 11.26640s +22:45:22.70214s
RUWE (>1.4 is poor)  : 1.03
K magnitude           : 14.170
G magnitude           : 16.870
RP magnitude          : 15.998
BP magnitude          : 17.637
DUPflag              : 0
Distance (au)         : 9.290
f0 (km)               : 0.00
g0 (km)               : 0.00
skyplane vel. (km/s) : 19.35
Sun-Target sep (deg)  : 71.27
Sun-Moon sep (deg)    : 55.93
B (ring opening deg)  : -26.71
PA of pole (deg)      : -5.78
Pole direction: RA (deg): 39.48270
Dec (deg): 83.42790
C/A sky separation (") : 0.052
C/A sky separation (km) : 350.4
NAIF SPICE kernels   : RAJobs_U111+rgf16.spk
URKALLv1.spk
naif0012.tls
nep097.bsp
nep101.bsp
sat4401.bsp
de440.bsp
earth_720101_070426.bpc
jup365.bsp
urall6.bsp
IAU_SATURN_for_RINGFIT.tpc
pck00010.tpc
earth_200101_990628_predict.bpc
IAU_NEPTUNE_for_RINGFIT.tpc.BECAREFUL
uranus_ringframes_rfrench20220627_v1.tf
neptune_ringframes_rfrench20220702a_v1.tf
earth_flat_IAU.spk

```

x: target alt < 5.0 deg or sun > -5.0 deg

Target	I/E	UTC	alt	alt-sun	radius	lat-geo	lat-geodetic
Titan	I	2033-04-09T22:43:48.403	26.43	-39.96	2575.1	9.36	9.37
Titan	E	2033-04-09T22:48:14.188	25.48	-40.69	2575.2	4.58	4.59

