

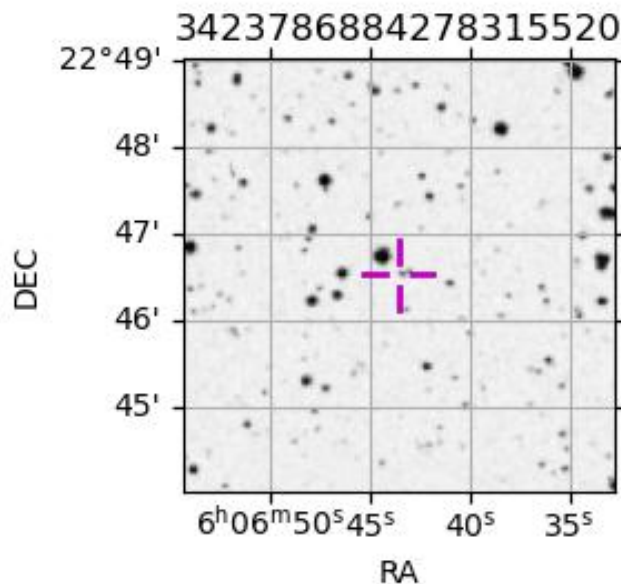
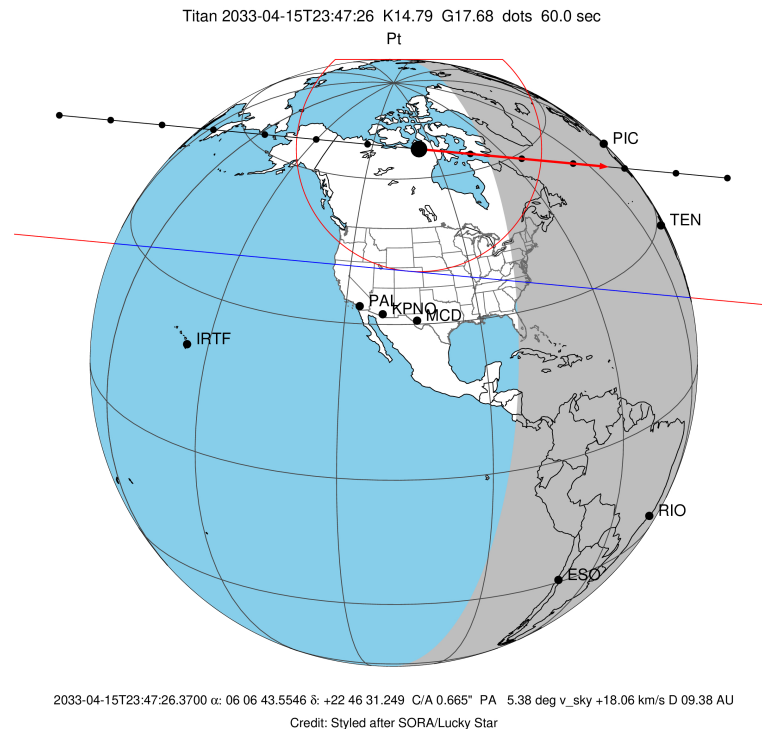
target : Titan  
 target radius (km) : 2575.15  
 C/A epoch : 2033-04-15T23:47:26.370  
 Event type : Pt  
 : Titan occs: topocentric, not geocentric  
 : Not a ringed target  
 Gaia source ID : 3423786884278315520  
 2Mass ID (if available) : 06064354+2246315

ICRS Star Coord at Epoch: 06h 06m 43.55462s +22:46:31.24898s  
 RUWE (>1.4 is poor) : 1.60  
 K magnitude : 14.794  
 G magnitude : 17.678  
 RP magnitude : 16.648  
 BP magnitude : 18.349  
 DUPflag : 0  
 Distance (au) : 9.378  
 f0 (km) : 0.00  
 g0 (km) : 0.00  
 skyplane vel. (km/s) : 18.07  
 Sun-Target sep (deg) : 65.70  
 Sun-Moon sep (deg) : 127.42  
 B (ring opening deg) : -26.70  
 PA of pole (deg) : -5.81  
 Pole direction: RA (deg): 39.48270  
 Dec (deg): 83.42790  
 C/A sky separation (") : 0.662  
 C/A sky separation (km) : 4505.2  
 NAIF SPICE kernels : RAJobs\_U111+rgf16.spk

URKALLv1.spk  
 naif0012.tls  
 nep097.bsp  
 nep101.bsp  
 sat4401.bsp

Observable events with sun below -5 deg and altitude above 5 deg

Obs	Location	lat	Elon	Target	Observed Events Interval	OEcode
PIC	Pic du Midi	42.9	0.1			Pnn
PAL	Palomar Mt (200")	33.4	243.1			Pnn
PMO	Purple Mtn Obs. Nanking	32.1	118.8			Pnn
KPNO	Kitt Peak Natl Obs	32.0	248.4			Pnn
MCD	McDonald Obs. 2.7m	30.7	256.0			Pnn
TEN	Teide Obs./Tenerife	28.3	343.5	+ +	APR 15 23:50 - APR 15 23:54	Pie
IRTF	Mauna Kea/IRTF	19.8	204.5			Pnn
KAV	Kavalur Observatory	12.6	78.8			Pnn
RIO	Rio de Janeiro	-22.9	316.8			Pnn
ESO	European Southern Obs. (3.6m)	-29.3	289.3			Pnn
AAT	Siding Spring (AAT)	-31.3	149.1			Pnn
SAAO	So. Afr. Astro. Obs. (Sutherland)	-32.4	20.8			Pnn
MSO	Mt. Stromlo Observatory	-35.3	149.0			Pnn



```

target                : Titan
target radius (km)   : 2575.15
C/A epoch            : 2033-04-15T23:52:20.220
Event type           : Pt
: Titan occs: topocentric, not geocentric
: Not a ringed target
Observer code        : TEN
Location             : Teide Obs./Tenerife
Latitude (deg)       : 28.30050
E. Longitude (deg)   : 343.48909
Altitude (km)        : 2.395
Gaia source ID       : 3423786884278315520
2Mass ID (if available) : 06064354+2246315
ICRS Star Coord at Epoch: 06h 06m 43.55462s +22:46:31.24898s
RUWE (>1.4 is poor) : 1.60
K magnitude           : 14.794
G magnitude           : 17.678
RP magnitude          : 16.648
BP magnitude          : 18.349
DUPflag              : 0
Distance (au)        : 9.378
f0 (km)              : 0.00
g0 (km)              : 0.00
skyplane vel. (km/s) : 18.07
Sun-Target sep (deg) : 65.70
Sun-Moon sep (deg)   : 128.03
B (ring opening deg) : -26.70
PA of pole (deg)     : -5.81
Pole direction: RA (deg): 39.48270
Dec (deg): 83.42790
C/A sky separation (") : 0.155
C/A sky separation (km) : 1055.7
NAIF SPICE kernels   : RAJobs_U111+rgf16.spk
URKALLv1.spk
naif0012.tls
nep097.bsp
nep101.bsp
sat4401.bsp
de440.bsp
earth_720101_070426.bpc
jup365.bsp
urall6.bsp
IAU_SATURN_for_RINGFIT.tpc
pck00010.tpc
earth_200101_990628_predict.bpc
IAU_NEPTUNE_for_RINGFIT.tpc.BECAREFUL
uranus_ringframes_rfrench20220627_v1.tf
neptune_ringframes_rfrench20220702a_v1.tf
earth_flat_IAU.spk

```

x: target alt < 5.0 deg or sun > -5.0 deg

Target	I/E	UTC	alt	alt-sun	radius	lat-geo	lat-geodetic
Titan	I	2033-04-15T23:50:10.528	7.78	-47.57	2575.1	-31.57	-31.59
Titan	E	2033-04-15T23:54:29.863	6.90	-48.01	2575.2	-11.17	-11.18

