

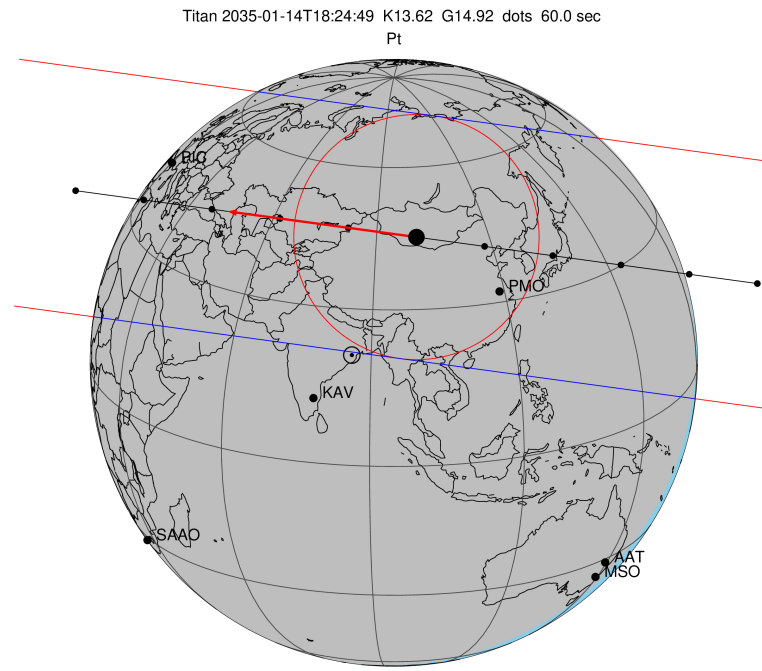
target : Titan
 target radius (km) : 2575.15
 C/A epoch : 2035-01-14T18:24:49.560
 Event type : Pt
 : Titan occs: topocentric, not geocentric
 : Not a ringed target
 Gaia source ID : 675587261762271616
 2Mass ID (if available) : 08172073+2004484

ICRS Star Coord at Epoch: 08h 17m 20.73182s +20:04:48.48009s
 RUWE (>1.4 is poor) : 1.08
 K magnitude : 13.615
 G magnitude : 14.917
 RP magnitude : 14.455
 BP magnitude : 15.210
 DUPflag : 0
 Distance (au) : 8.094
 f0 (km) : 0.00
 g0 (km) : 0.00
 skyplane vel. (km/s) : -24.07
 Sun-Target sep (deg) : 171.93
 Sun-Moon sep (deg) : 128.36
 B (ring opening deg) : -20.53
 PA of pole (deg) : -6.99
 Pole direction: RA (deg): 39.48270
 Dec (deg): 83.42790
 C/A sky separation (") : 0.457
 C/A sky separation (km) : 2685.4
 NAIF SPICE kernels : RAJobs_U111+rgf16.spk

URKALLv1.spk
 naif0012.tls
 nep097.bsp
 nep101.bsp
 sat4401.bsp

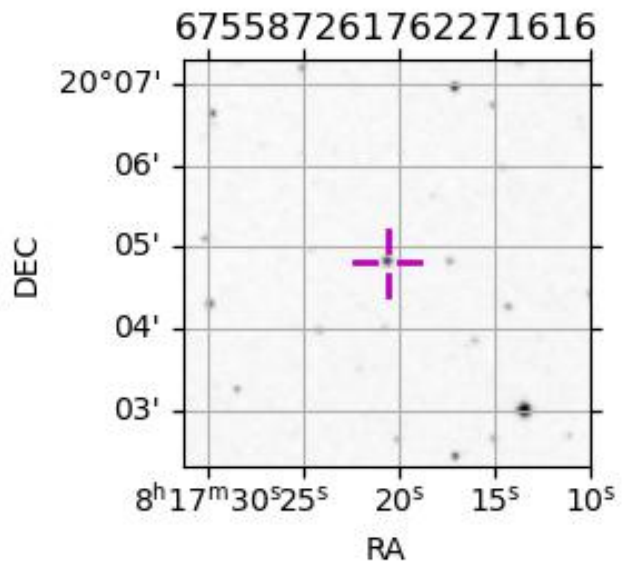
Observable events with sun below -5 deg and altitude above 5 deg

Obs	Location	lat	Elon	Target	Observed Events Interval	OEncode
PIC	Pic du Midi	42.9	0.1	+ +	JAN 14 18:26 - JAN 14 18:30	Pie
PAL	Palomar Mt (200")	33.4	243.1			Pnn
PMO	Purple Mtn Obs. Nanking	32.1	118.8	+ +	JAN 14 18:21 - JAN 14 18:25	Pie
KPNO	Kitt Peak Natl Obs	32.0	248.4			Pnn
MCD	McDonald Obs. 2.7m	30.7	256.0			Pnn
TEN	Teide Obs./Tenerife	28.3	343.5			Pnn
IRTF	Mauna Kea/IRTF	19.8	204.5			Pnn
KAV	Kavalur Observatory	12.6	78.8			Pnn
RIO	Rio de Janeiro	-22.9	316.8			Pnn
ESO	European Southern Obs. (3.6m)	-29.3	289.3			Pnn
AAT	Siding Spring (AAT)	-31.3	149.1			Pnn
SAAO	So. Afr. Astro. Obs. (Sutherland)	-32.4	20.8			Pnn
MSO	Mt. Stromlo Observatory	-35.3	149.0			Pnn



Titan 2035-01-14T18:24:49 K13.62 G14.92 dots 60.0 sec
Pt

2035-01-14T18:24:49.5600 α: 08 17 20.7318 δ: +20 04 48.480 C/A 0.457" PA 7.76 deg v_sky -24.07 km/s D 08.09 AU
Credit: Styled after SORA/Lucky Star



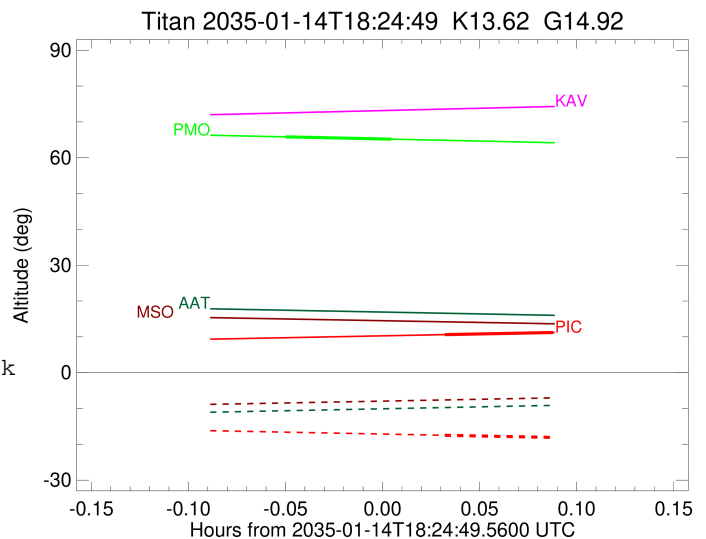
```

target                : Titan
target radius (km)   : 2575.15
C/A epoch             : 2035-01-14T18:28:25.720
Event type            : Pt
: Titan occs: topocentric, not geocentric
: Not a ringed target
Observer code         : PIC
Location              : Pic du Midi
Latitude (deg)        : 42.93656
E. Longitude (deg)    : 0.14231
Altitude (km)         : 2.890
Gaia source ID        : 675587261762271616
2Mass ID (if available) : 08172073+2004484
ICRS Star Coord at Epoch: 08h 17m 20.73182s +20:04:48.48009s
RUWE (>1.4 is poor)  : 1.08
K magnitude           : 13.615
G magnitude           : 14.917
RP magnitude          : 14.455
BP magnitude          : 15.210
DUPflag              : 0
Distance (au)         : 8.094
f0 (km)               : 0.00
g0 (km)               : 0.00
skyplane vel. (km/s)  : -24.07
Sun-Target sep (deg)  : 171.93
Sun-Moon sep (deg)    : 129.00
B (ring opening deg)  : -20.53
PA of pole (deg)      : -6.99
Pole direction: RA (deg): 39.48270
Dec (deg): 83.42790
C/A sky separation (") : 0.135
C/A sky separation (km) : 792.9
NAIF SPICE kernels    : RAJobs_U111+rgf16.spk
URKALLv1.spk
naif0012.tls
nep097.bsp
nep101.bsp
sat4401.bsp
de440.bsp
earth_720101_070426.bpc
jup365.bsp
urall6.bsp
IAU_SATURN_for_RINGFIT.tpc
pck00010.tpc
earth_200101_990628_predict.bpc
IAU_NEPTUNE_for_RINGFIT.tpc.BECAREFUL
uranus_ringframes_rfrench20220627_v1.tf
neptune_ringframes_rfrench20220702a_v1.tf
earth_flat_IAU.spk

```

x: target alt < 5.0 deg or sun > -5.0 deg

Target	I/E	UTC	alt	alt-sun	radius	lat-geo	lat-geodetic
Titan	I	2035-01-14T18:26:43.924	10.61	-17.48	2575.1	30.64	30.65
Titan	E	2035-01-14T18:30:07.519	11.21	-18.08	2575.2	2.71	2.72



```

target                : Titan
target radius (km)   : 2575.15
C/A epoch            : 2035-01-14T18:23:27.990
Event type           : Pt
: Titan occs: topocentric, not geocentric
: Not a ringed target
Observer code        : PMO
Location             : Purple Mtn Obs. Nanking
Latitude (deg)       : 32.06667
E. Longitude (deg)   : 118.82089
Altitude (km)        : 0.364
Gaia source ID       : 675587261762271616
2Mass ID (if available) : 08172073+2004484
ICRS Star Coord at Epoch: 08h 17m 20.73182s +20:04:48.48009s
RUWE (>1.4 is poor) : 1.08
K magnitude          : 13.615
G magnitude          : 14.917
RP magnitude         : 14.455
BP magnitude         : 15.210
DUPflag             : 0
Distance (au)        : 8.094
f0 (km)              : 0.00
g0 (km)              : 0.00
skyplane vel. (km/s) : -24.07
Sun-Target sep (deg) : 171.93
Sun-Moon sep (deg)   : 128.86
B (ring opening deg) : -20.53
PA of pole (deg)     : -6.99
Pole direction: RA (deg): 39.48270
Dec (deg): 83.42790
C/A sky separation (") : 0.157
C/A sky separation (km) : 921.6
NAIF SPICE kernels   : RAJobs_U111+rgf16.spk
URKALLv1.spk
naif0012.tls
nep097.bsp
nep101.bsp
sat4401.bsp
de440.bsp
earth_720101_070426.bpc
jup365.bsp
urall6.bsp
IAU_SATURN_for_RINGFIT.tpc
pck00010.tpc
earth_200101_990628_predict.bpc
IAU_NEPTUNE_for_RINGFIT.tpc.BECAREFUL
uranus_ringframes_rfrench20220627_v1.tf
neptune_ringframes_rfrench20220702a_v1.tf
earth_flat_IAU.spk

```

x: target alt < 5.0 deg or sun > -5.0 deg

Target	I/E	UTC	alt	alt-sun	radius	lat-geo	lat-geodetic
Titan	I	2035-01-14T18:21:49.552	65.82	-59.58	2575.1	-6.04	-6.04
Titan	E	2035-01-14T18:25:06.439	65.18	-58.90	2575.1	-32.92	-32.94

