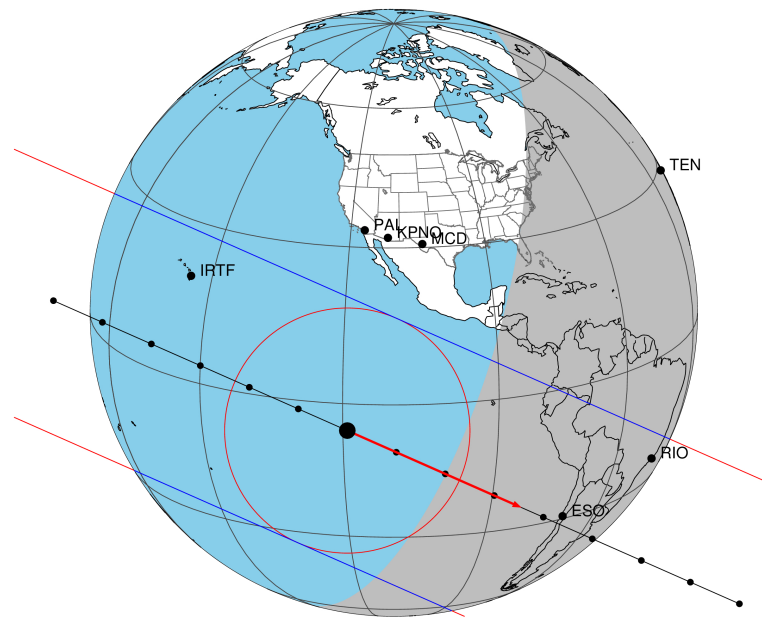


target : Titan  
 target radius (km) : 2575.15  
 C/A epoch : 2036-05-25T00:14:47.790  
 Event type : Pt  
 : Titan occs: topocentric, not geocentric  
 : Not a ringed target  
 Gaia source ID : 611327125013804672  
 2Mass ID (if available) : 09042069+1748480

ICRS Star Coord at Epoch: 09h 04m 20.68413s +17:48:48.06659s  
 RUWE (>1.4 is poor) : 1.11  
 K magnitude : 14.458  
 G magnitude : 17.649  
 RP magnitude : 16.632  
 BP magnitude : 18.718  
 DUPflag : 0  
 Distance (au) : 9.472  
 f0 (km) : 0.00  
 g0 (km) : 0.00  
 skyplane vel. (km/s) : 18.75  
 Sun-Target sep (deg) : 69.43  
 Sun-Moon sep (deg) : 80.12  
 B (ring opening deg) : -16.94  
 PA of pole (deg) : -6.83  
 Pole direction: RA (deg): 39.48270  
 Dec (deg): 83.42790  
 C/A sky separation (") : 0.390  
 C/A sky separation (km) : 2676.5  
 NAIF SPICE kernels : RAJobs\_U111+rgf16.spk  
 URKALLv1.spk  
 naif0012.tls  
 nep097.bsp  
 nep101.bsp  
 sat4401.bsp

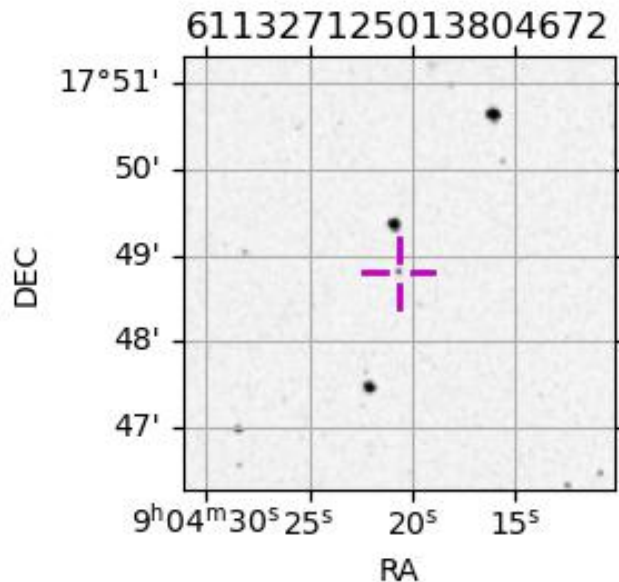
Titan 2036-05-25T00:14:47 K14.46 G17.65 dots 60.0 sec  
 Pt



2036-05-25T00:14:47.7900 α: 09 04 20.6841 δ: +17 48 48.0667 C/A 0.387" PA 203.87 deg v\_sky +18.75 km/s D 09.47 AU  
 Credit: Styled after SORA/Lucky Star

Observable events with sun below -5 deg and altitude above 5 deg

Obs	Location	lat	Elon	Target	Observed Events Interval	OCode
PIC	Pic du Midi	42.9	0.1			Pnn
PAL	Palomar Mt (200")	33.4	243.1			Pnn
PMO	Purple Mtn Obs. Nanking	32.1	118.8			Pnn
KPNO	Kitt Peak Natl Obs	32.0	248.4			Pnn
MCD	McDonald Obs. 2.7m	30.7	256.0			Pnn
TEN	Teide Obs./Tenerife	28.3	343.5			Pnn
IRTF	Mauna Kea/IRTF	19.8	204.5			Pnn
KAV	Kavalur Observatory	12.6	78.8			Pnn
RIO	Rio de Janeiro	-22.9	316.8	+ +	MAY 25 00:19 - MAY 25 00:21	Pie
ESO	European Southern Obs. (3.6m)	-29.3	289.3	+ +	MAY 25 00:16 - MAY 25 00:21	Pie
AAT	Siding Spring (AAT)	-31.3	149.1			Pnn
SAAO	So. Afr. Astro. Obs. (Sutherland)	-32.4	20.8			Pnn
MSO	Mt. Stromlo Observatory	-35.3	149.0			Pnn



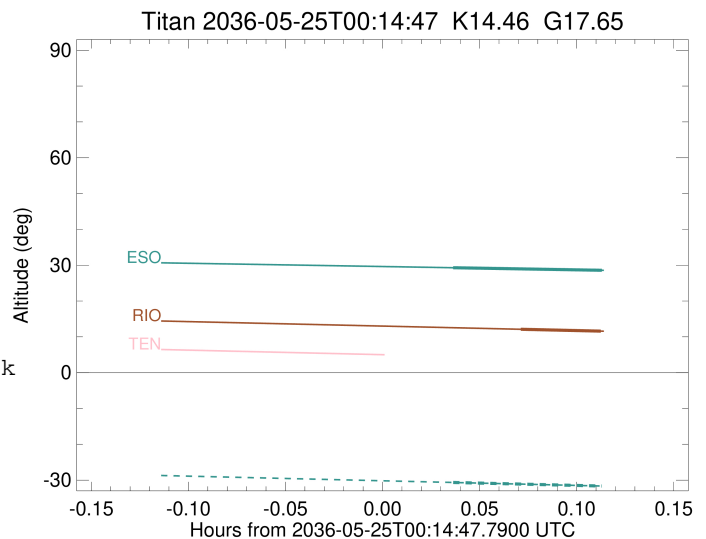
```

target                : Titan
target radius (km)   : 2575.15
C/A epoch            : 2036-05-25T00:20:18.310
Event type           : Pt
: Titan occs: topocentric, not geocentric
: Not a ringed target
Observer code        : RIO
Location             : Rio de Janeiro
Latitude (deg)       : -22.89506
E. Longitude (deg)  : 316.77708
Altitude (km)        : 0.033
Gaia source ID       : 611327125013804672
2Mass ID (if available) : 09042069+1748480
ICRS Star Coord at Epoch: 09h 04m 20.68413s +17:48:48.06659s
RUWE (>1.4 is poor) : 1.11
K magnitude           : 14.458
G magnitude           : 17.649
RP magnitude          : 16.632
BP magnitude          : 18.718
DUPflag              : 0
Distance (au)        : 9.473
f0 (km)              : 0.00
g0 (km)              : 0.00
skyplane vel. (km/s) : 18.75
Sun-Target sep (deg) : 69.43
Sun-Moon sep (deg)   : 80.49
B (ring opening deg) : -16.94
PA of pole (deg)     : -6.83
Pole direction: RA (deg): 39.48270
Dec (deg): 83.42790
C/A sky separation (") : 0.314
C/A sky separation (km) : 2154.9
NAIF SPICE kernels   : RAJobs_U111+rgf16.spk
URKALLv1.spk
naif0012.tls
nep097.bsp
nep101.bsp
sat4401.bsp
de440.bsp
earth_720101_070426.bpc
jup365.bsp
urall6.bsp
IAU_SATURN_for_RINGFIT.tpc
pck00010.tpc
earth_200101_990628_predict.bpc
IAU_NEPTUNE_for_RINGFIT.tpc.BECAREFUL
uranus_ringframes_rfrench20220627_v1.tf
neptune_ringframes_rfrench20220702a_v1.tf
earth_flat_IAU.spk

```

x: target alt < 5.0 deg or sun > -5.0 deg

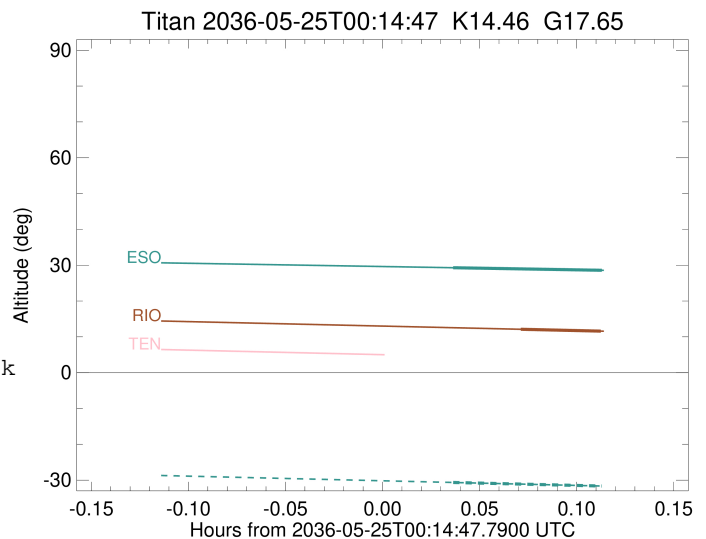
Target	I/E	UTC	alt	alt-sun	radius	lat-geo	lat-geodetic
Titan	I	2036-05-25T00:19:02.747	12.12	-55.07	2575.2	24.41	24.42
Titan	E	2036-05-25T00:21:33.849	11.59	-55.65	2575.1	72.95	72.96



```

target                : Titan
target radius (km)   : 2575.15
C/A epoch            : 2036-05-25T00:19:16.450
Event type           : Pt
: Titan occs: topocentric, not geocentric
: Not a ringed target
Observer code        : ESO
Location             : European Southern Obs. (3.6m)
Latitude (deg)       : -29.26097
E. Longitude (deg)   : 289.26831
Altitude (km)        : 2.400
Gaia source ID       : 611327125013804672
2Mass ID (if available) : 09042069+1748480
ICRS Star Coord at Epoch: 09h 04m 20.68413s +17:48:48.06659s
RUWE (>1.4 is poor) : 1.11
K magnitude           : 14.458
G magnitude           : 17.649
RP magnitude         : 16.632
BP magnitude         : 18.718
DUPflag              : 0
Distance (au)        : 9.473
f0 (km)              : 0.00
g0 (km)              : 0.00
skyplane vel. (km/s) : 18.75
Sun-Target sep (deg) : 69.43
Sun-Moon sep (deg)   : 80.71
B (ring opening deg) : -16.94
PA of pole (deg)     : -6.83
Pole direction: RA (deg): 39.48270
Dec (deg): 83.42790
C/A sky separation (") : 0.041
C/A sky separation (km) : 283.7
NAIF SPICE kernels   : RAJobs_U111+rgf16.spk
URKALLv1.spk
naif0012.tls
nep097.bsp
nep101.bsp
sat4401.bsp
de440.bsp
earth_720101_070426.bpc
jup365.bsp
urall6.bsp
IAU_SATURN_for_RINGFIT.tpc
pck00010.tpc
earth_200101_990628_predict.bpc
IAU_NEPTUNE_for_RINGFIT.tpc.BECAREFUL
uranus_ringframes_rfrench20220627_v1.tf
neptune_ringframes_rfrench20220702a_v1.tf
earth_flat_IAU.spk

```



x: target alt < 5.0 deg or sun > -5.0 deg

Target	I/E	UTC	alt	alt-sun	radius	lat-geo	lat-geodetic
Titan	I	2036-05-25T00:16:58.120	29.29	-30.65	2575.1	-23.82	-23.83
Titan	E	2036-05-25T00:21:34.735	28.58	-31.64	2575.1	35.71	35.73