

target : Titan
 target radius (km) : 2575.15
 C/A epoch : 2039-02-10T13:32:27.530
 Event type : Pgt
 : Titan occs: geocentric, topocentric
 : Not a ringed target
 Gaia source ID : 3892715334961556352
 2Mass ID (if available) : 11552724+0303023

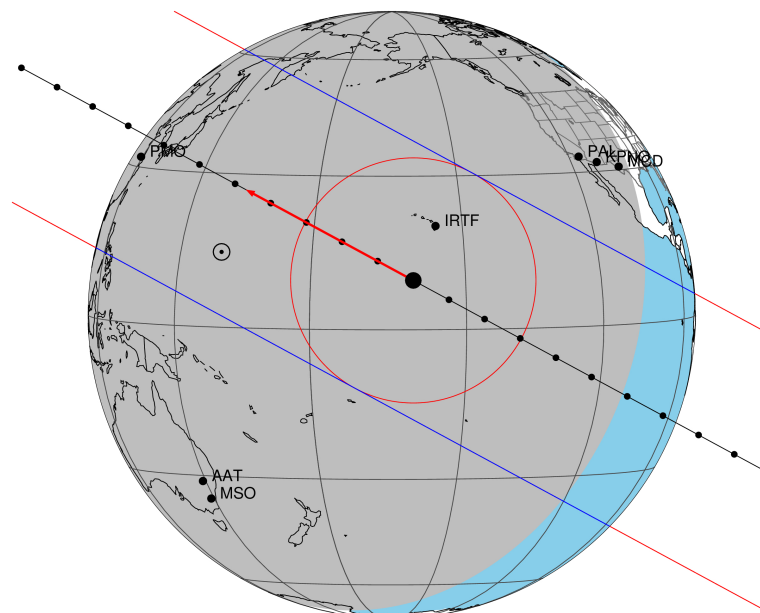
ICRS Star Coord at Epoch: 11h 55m 27.22360s +03:03:01.99496s
 RUWE (>1.4 is poor) : 0.98
 K magnitude : 13.559
 G magnitude : 15.178
 RP magnitude : 14.622
 BP magnitude : 15.563
 DUPflag : 0
 Distance (au) : 8.635
 f0 (km) : 0.00
 g0 (km) : 0.00
 skyplane vel. (km/s) : -14.19
 Sun-Target sep (deg) : 143.31
 Sun-Moon sep (deg) : 19.05
 B (ring opening deg) : 1.94
 PA of pole (deg) : -4.28
 Pole direction: RA (deg): 39.48270
 Dec (deg): 83.42790
 C/A sky separation (") : 0.135
 C/A sky separation (km) : 845.2
 NAIF SPICE kernels : RAJobs_U111+rgf16.spk

URKALLv1.spk
 naif0012.tls
 nep097.bsp
 nep101.bsp
 sat4401.bsp

Observable events with sun below -5 deg and altitude above 5 deg

Obs	Location	lat	Elon	Target	Observed Events Interval	OEncode
PIC	Pic du Midi	42.9	0.1			Pnn
PAL	Palomar Mt (200")	33.4	243.1			Pnn
PMO	Purple Mtn Obs. Nanking	32.1	118.8	+ +	FEB 10 13:36 - FEB 10 13:42	Pie
KPNO	Kitt Peak Natl Obs	32.0	248.4			Pnn
MCD	McDonald Obs. 2.7m	30.7	256.0			Pnn
TEN	Teide Obs./Tenerife	28.3	343.5			Pnn
IRTF	Mauna Kea/IRTF	19.8	204.5	+ +	FEB 10 13:29 - FEB 10 13:35	Pie
KAV	Kavalur Observatory	12.6	78.8			Pnn
RIO	Rio de Janeiro	-22.9	316.8			Pnn
ESO	European Southern Obs. (3.6m)	-29.3	289.3			Pnn
AAT	Siding Spring (AAT)	-31.3	149.1			Pnn
SAAO	So. Afr. Astro. Obs. (Sutherland)	-32.4	20.8			Pnn
MSO	Mt. Stromlo Observatory	-35.3	149.0			Pnn

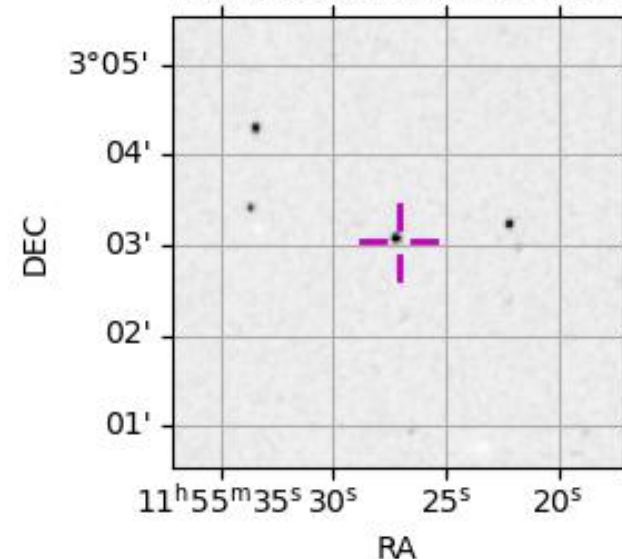
Titan 2039-02-10T13:32:27 K13.56 G15.18 dots 60.0 sec
 Pgt



2039-02-10T13:32:27.53000 ra: 11 55 27.22360 d: +03 03 01.995 C/A 0.136" PA 28.48 deg v_sky -14.19 km/s D 08.64 AU

Credit: Styled after SORA/Lucky Star

3892715334961556352



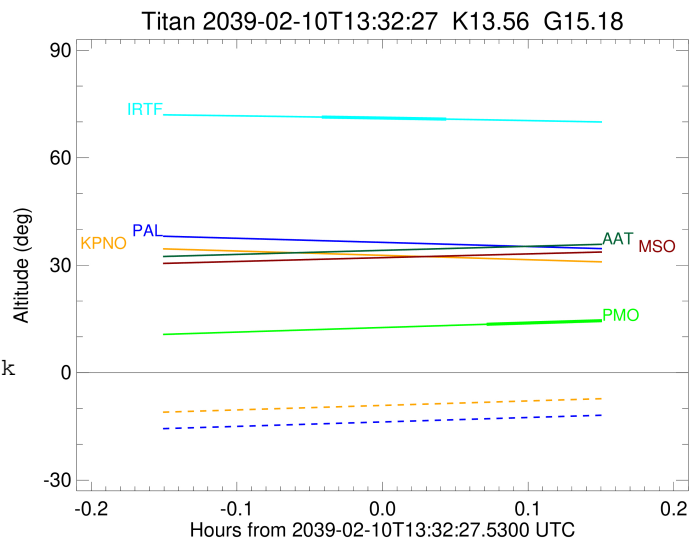
```

target                : Titan
target radius (km)   : 2575.15
C/A epoch            : 2039-02-10T13:39:42.250
Event type           : Pgt
: Titan occs: geocentric, topocentric
: Not a ringed target
Observer code        : PMO
Location             : Purple Mtn Obs. Nanking
Latitude (deg)       : 32.06667
E. Longitude (deg)   : 118.82089
Altitude (km)        : 0.364
Gaia source ID       : 3892715334961556352
2Mass ID (if available) : 11552724+0303023
ICRS Star Coord at Epoch: 11h 55m 27.22360s +03:03:01.99496s
RUWE (>1.4 is poor) : 0.98
K magnitude           : 13.559
G magnitude           : 15.178
RP magnitude          : 14.622
BP magnitude          : 15.563
DUPflag              : 0
Distance (au)         : 8.635
f0 (km)               : 0.00
g0 (km)               : 0.00
skyplane vel. (km/s) : -14.19
Sun-Target sep (deg)  : 143.31
Sun-Moon sep (deg)   : 18.22
B (ring opening deg) : 1.94
PA of pole (deg)     : -4.28
Pole direction: RA (deg): 39.48270
Dec (deg): 83.42790
C/A sky separation (" ) : 0.071
C/A sky separation (km) : 444.6
NAIF SPICE kernels   : RAJobs_U111+rgf16.spk
URKALLv1.spk
naif0012.tls
nep097.bsp
nep101.bsp
sat4401.bsp
de440.bsp
earth_720101_070426.bpc
jup365.bsp
urall6.bsp
IAU_SATURN_for_RINGFIT.tpc
pck00010.tpc
earth_200101_990628_predict.bpc
IAU_NEPTUNE_for_RINGFIT.tpc.BECAREFUL
uranus_ringframes_rfrench20220627_v1.tf
neptune_ringframes_rfrench20220702a_v1.tf
earth_flat_IAU.spk

```

x: target alt < 5.0 deg or sun > -5.0 deg

Target	I/E	UTC	alt	alt-sun	radius	lat-geo	lat-geodetic
Titan	I	2039-02-10T13:36:44.637	13.51	-49.10	2575.1	22.69	22.70
Titan	E	2039-02-10T13:42:39.851	14.76	-50.30	2575.2	-42.56	-42.58



```

target                : Titan
target radius (km)   : 2575.15
C/A epoch             : 2039-02-10T13:32:31.670
Event type            : Pgt
: Titan occs: geocentric, topocentric
: Not a ringed target
Observer code         : IRTF
Location              : Mauna Kea/IRTF
Latitude (deg)        : 19.82622
E. Longitude (deg)   : 204.52800
Altitude (km)         : 4.168
Gaia source ID        : 3892715334961556352
2Mass ID (if available) : 11552724+0303023
ICRS Star Coord at Epoch: 11h 55m 27.22360s +03:03:01.99496s
RUWE (>1.4 is poor) : 0.98
K magnitude           : 13.559
G magnitude           : 15.178
RP magnitude          : 14.622
BP magnitude          : 15.563
DUPflag              : 0
Distance (au)         : 8.635
f0 (km)               : 0.00
g0 (km)               : 0.00
skyplane vel. (km/s) : -14.19
Sun-Target sep (deg) : 143.31
Sun-Moon sep (deg)   : 19.33
B (ring opening deg) : 1.94
PA of pole (deg)     : -4.28
Pole direction: RA (deg): 39.48270
Dec (deg): 83.42790
C/A sky separation ("): 0.195
C/A sky separation (km): 1223.9
NAIF SPICE kernels   : RAJobs_U111+rgf16.spk
URKALLv1.spk
naif0012.tls
nep097.bsp
nep101.bsp
sat4401.bsp
de440.bsp
earth_720101_070426.bpc
jup365.bsp
urall6.bsp
IAU_SATURN_for_RINGFIT.tpc
pck00010.tpc
earth_200101_990628_predict.bpc
IAU_NEPTUNE_for_RINGFIT.tpc.BECAREFUL
uranus_ringframes_rfrench20220627_v1.tf
neptune_ringframes_rfrench20220702a_v1.tf
earth_flat_IAU.spk

```

x: target alt < 5.0 deg or sun > -5.0 deg

Target	I/E	UTC	alt	alt-sun	radius	lat-geo	lat-geodetic
Titan	I	2039-02-10T13:29:56.191	71.34	-48.17	2575.2	60.25	60.26
Titan	E	2039-02-10T13:35:07.193	70.77	-46.95	2575.2	-3.56	-3.56

