

target : Titan
 target radius (km) : 2575.15
 C/A epoch : 2042-01-04T05:47:33.590
 Event type : Pgt
 : Titan occs: geocentric, topocentric
 : Not a ringed target
 Gaia source ID : 6304816213034656128
 2Mass ID (if available) : 14124123-1047001

ICRS Star Coord at Epoch: 14h 12m 41.20305s -10:47:00.63897s
 RUWE (>1.4 is poor) : 0.96
 K magnitude : 13.839
 G magnitude : 17.275
 RP magnitude : 16.161
 BP magnitude : 18.586
 DUPflag : 0
 Distance (au) : 10.076
 f0 (km) : 0.00
 g0 (km) : 0.00
 skyplane vel. (km/s) : 25.48
 Sun-Target sep (deg) : 68.82
 Sun-Moon sep (deg) : 136.49
 B (ring opening deg) : 17.31
 PA of pole (deg) : -0.76
 Pole direction: RA (deg): 39.48270
 Dec (deg): 83.42790
 C/A sky separation (") : 0.066
 C/A sky separation (km) : 485.8
 NAIF SPICE kernels : RAJobs_U111+rgf16.spk

URKALLv1.spk
 naif0012.tls
 nep097.bsp
 nep101.bsp
 sat4401.bsp

Observable events with sun below -5 deg and altitude above 5 deg

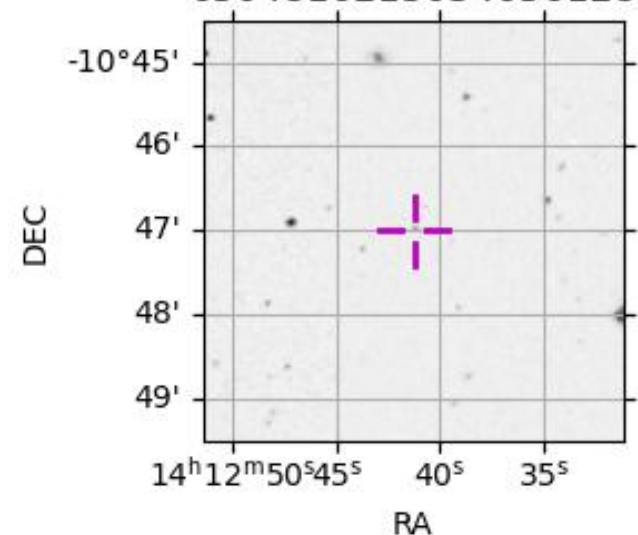
Obs	Location	lat	Elon	Target	Observed Events Interval	OCode
PIC	Pic du Midi	42.9	0.1			Pnn
PAL	Palomar Mt (200")	33.4	243.1			Pnn
PMO	Purple Mtn Obs. Nanking	32.1	118.8			Pnn
KPNO	Kitt Peak Natl Obs	32.0	248.4			Pnn
MCD	McDonald Obs. 2.7m	30.7	256.0			Pnn
TEN	Teide Obs./Tenerife	28.3	343.5	+ +	JAN 04 05:43 - JAN 04 05:45	Pie
IRTF	Mauna Kea/IRTF	19.8	204.5			Pnn
KAV	Kavalur Observatory	12.6	78.8			Pnn
RIO	Rio de Janeiro	-22.9	316.8			Pnn
ESO	European Southern Obs. (3.6m)	-29.3	289.3			Pnn
AAT	Siding Spring (AAT)	-31.3	149.1			Pnn
SAAO	So. Afr. Astro. Obs. (Sutherland)	-32.4	20.8			Pnn
MSO	Mt. Stromlo Observatory	-35.3	149.0			Pnn

Titan 2042-01-04T05:47:33 K13.84 G17.28 dots 60.0 sec
 Pgt



2042-01-04T05:47:33.5900 cc: 14 12 41.2031 d: -10 47 00.639 C/A 0.067" PA 13.98 deg v_sky +25.49 km/s D 10.08 AU
 Credit: Styled after SORA/Lucky Star

6304816213034656128



```

target                : Titan
target radius (km)   : 2575.15
C/A epoch             : 2042-01-04T05:44:39.840
Event type            : Pgt
: Titan occs: geocentric, topocentric
: Not a ringed target
Observer code         : TEN
Location              : Teide Obs./Tenerife
Latitude (deg)       : 28.30050
E. Longitude (deg)   : 343.48909
Altitude (km)        : 2.395
Gaia source ID       : 6304816213034656128
2Mass ID (if available) : 14124123-1047001
ICRS Star Coord at Epoch: 14h 12m 41.20305s -10:47:00.63897s
RUWE (>1.4 is poor) : 0.96
K magnitude           : 13.839
G magnitude           : 17.275
RP magnitude          : 16.161
BP magnitude          : 18.586
DUPflag              : 0
Distance (au)        : 10.076
f0 (km)              : 0.00
g0 (km)              : 0.00
skyplane vel. (km/s) : 25.48
Sun-Target sep (deg) : 68.82
Sun-Moon sep (deg)   : 137.40
B (ring opening deg) : 17.31
PA of pole (deg)     : -0.76
Pole direction: RA (deg): 39.48270
Dec (deg): 83.42790
C/A sky separation (") : 0.316
C/A sky separation (km) : 2306.8
NAIF SPICE kernels   : RAJobs_U111+rgf16.spk
URKALLv1.spk
naif0012.tls
nep097.bsp
nep101.bsp
sat4401.bsp
de440.bsp
earth_720101_070426.bpc
jup365.bsp
urall6.bsp
IAU_SATURN_for_RINGFIT.tpc
pck00010.tpc
earth_200101_990628_predict.bpc
IAU_NEPTUNE_for_RINGFIT.tpc.BECAREFUL
uranus_ringframes_rfrench20220627_v1.tf
neptune_ringframes_rfrench20220702a_v1.tf
earth_flat_IAU.spk

```

x: target alt < 5.0 deg or sun > -5.0 deg

Target	I/E	UTC	alt	alt-sun	radius	lat-geo	lat-geodetic
Titan	I	2042-01-04T05:43:54.427	34.81	-28.89	2575.2	45.71	45.73
Titan	E	2042-01-04T05:45:25.250	35.07	-28.56	2575.1	69.40	69.41

