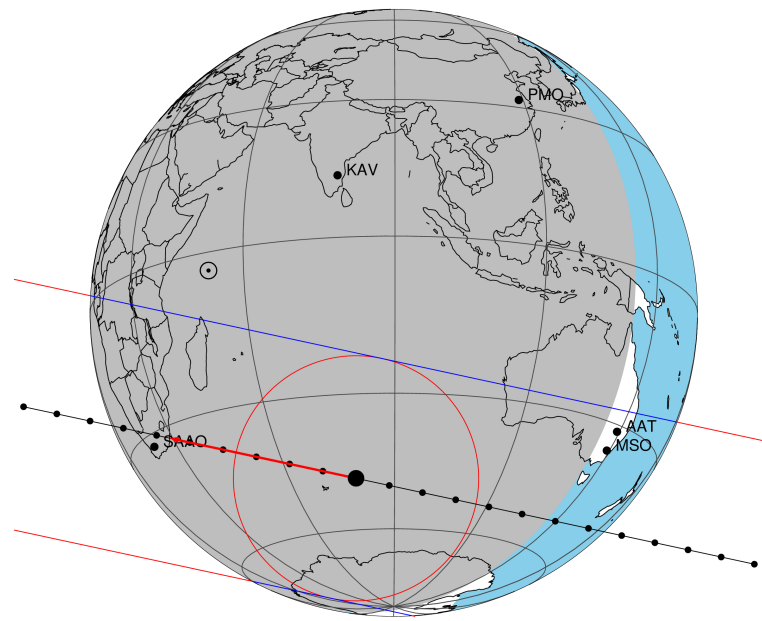


target : Titan  
 target radius (km) : 2575.15  
 C/A epoch : 2043-03-29T20:36:14.720  
 Event type : Pt  
 : Titan occs: topocentric, not geocentric  
 : Not a ringed target  
 Gaia source ID : 6308783422786848256  
 2Mass ID (if available) : 15013629-1429167

Titan 2043-03-29T20:36:14 K11.50 G13.44 dots 60.0 sec  
 Pt

ICRS Star Coord at Epoch: 15h 01m 36.15532s -14:29:16.68931s  
 RUWE (>1.4 is poor) : 2.90  
 K magnitude : 11.502  
 G magnitude : 13.442  
 RP magnitude : 12.819  
 BP magnitude : 13.887  
 DUPflag : 0  
 Distance (au) : 9.068  
 f0 (km) : 0.00  
 g0 (km) : 0.00  
 skyplane vel. (km/s) : -11.90  
 Sun-Target sep (deg) : 141.26  
 Sun-Moon sep (deg) : 10.12  
 B (ring opening deg) : 21.02  
 PA of pole (deg) : 0.72  
 Pole direction: RA (deg): 39.48270  
 Dec (deg): 83.42790  
 C/A sky separation (") : 0.542  
 C/A sky separation (km) : 3567.1  
 NAIF SPICE kernels : RAJobs\_U111+rgf16.spk

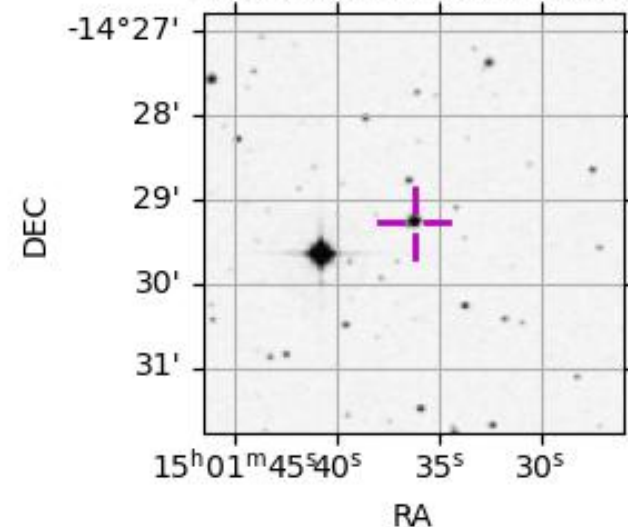


2043-03-29T20:36:14.7200 cr: 15 01 36.1553 s: -14 29 16.689 C/A 0.542" PA 192.16 deg v\_sky -11.89 km/s D 09.07 AU  
 Credit: Styled after SORA/Lucky Star

URKALLv1.spk  
 naif0012.tls  
 nep097.bsp  
 nep101.bsp  
 sat4401.bsp  
 Observable events with sun below -5 deg and altitude above 5 deg

Obs	Location	lat	Elon	Target	Observed Events Interval	OEncode
PIC	Pic du Midi	42.9	0.1			Pnn
PAL	Palomar Mt (200")	33.4	243.1			Pnn
PMO	Purple Mtn Obs. Nanking	32.1	118.8			Pnn
KPNO	Kitt Peak Natl Obs	32.0	248.4			Pnn
MCD	McDonald Obs. 2.7m	30.7	256.0			Pnn
TEN	Teide Obs./Tenerife	28.3	343.5			Pnn
IRTF	Mauna Kea/IRTF	19.8	204.5			Pnn
KAV	Kavalur Observatory	12.6	78.8			Pnn
RIO	Rio de Janeiro	-22.9	316.8			Pnn
ESO	European Southern Obs. (3.6m)	-29.3	289.3			Pnn
AAT	Siding Spring (AAT)	-31.3	149.1			Pnn
SAAO	So. Afr. Astro. Obs. (Sutherland)	-32.4	20.8	+ +	MAR 29 20:38 - MAR 29 20:45	Pie
MSO	Mt. Stromlo Observatory	-35.3	149.0			Pnn

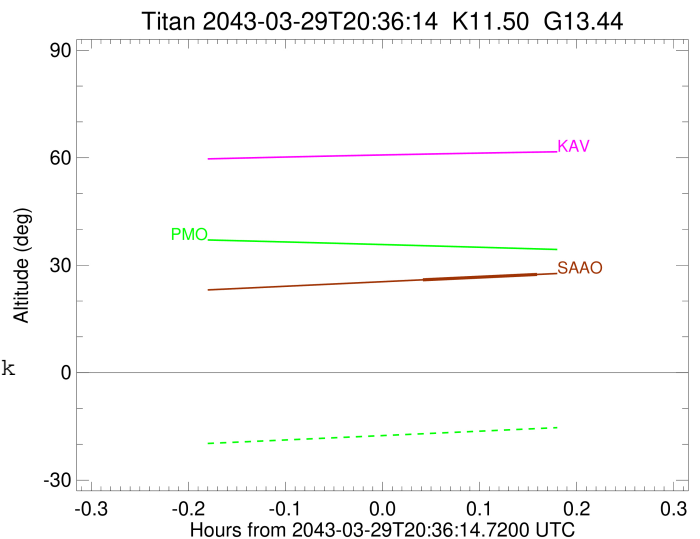
6308783422786848256



```

target                : Titan
target radius (km)   : 2575.15
C/A epoch             : 2043-03-29T20:42:16.130
Event type            : Pt
: Titan occs: topocentric, not geocentric
: Not a ringed target
Observer code         : SAAO
Location              : So. Afr. Astro. Obs. (Sutherland)
Latitude (deg)       : -32.37953
E. Longitude (deg)   : 20.81070
Altitude (km)        : 1.768
Gaia source ID       : 6308783422786848256
2Mass ID (if available) : 15013629-1429167
ICRS Star Coord at Epoch: 15h 01m 36.15532s -14:29:16.68931s
RUWE (>1.4 is poor) : 2.90
K magnitude           : 11.502
G magnitude           : 13.442
RP magnitude          : 12.819
BP magnitude          : 13.887
DUPflag              : 0
Distance (au)        : 9.068
f0 (km)              : 0.00
g0 (km)              : 0.00
skyplane vel. (km/s) : -11.90
Sun-Target sep (deg) : 141.26
Sun-Moon sep (deg)   : 10.29
B (ring opening deg) : 21.02
PA of pole (deg)     : 0.72
Pole direction: RA (deg): 39.48270
Dec (deg): 83.42790
C/A sky separation (") : 0.026
C/A sky separation (km) : 170.6
NAIF SPICE kernels   : RAJobs_U111+rgf16.spk
URKALLv1.spk
naif0012.tls
nep097.bsp
nep101.bsp
sat4401.bsp
de440.bsp
earth_720101_070426.bpc
jup365.bsp
urall6.bsp
IAU_SATURN_for_RINGFIT.tpc
pck00010.tpc
earth_200101_990628_predict.bpc
IAU_NEPTUNE_for_RINGFIT.tpc.BECAREFUL
uranus_ringframes_rfrench20220627_v1.tf
neptune_ringframes_rfrench20220702a_v1.tf
earth_flat_IAU.spk

```



x: target alt < 5.0 deg or sun > -5.0 deg

Target	I/E	UTC	alt	alt-sun	radius	lat-geo	lat-geodetic
Titan	I	2043-03-29T20:38:42.471	25.91	-49.44	2575.1	6.60	6.60
Titan	E	2043-03-29T20:45:49.585	27.42	-50.61	2575.1	-13.63	-13.64