

target : Titan
 target radius (km) : 2575.15
 C/A epoch : 2043-04-05T10:56:45.650
 Event type : Pt
 : Titan occs: topocentric, not geocentric
 : Not a ringed target
 Gaia source ID : 6311796389589260672
 2Mass ID (if available) : 14595021-1423184

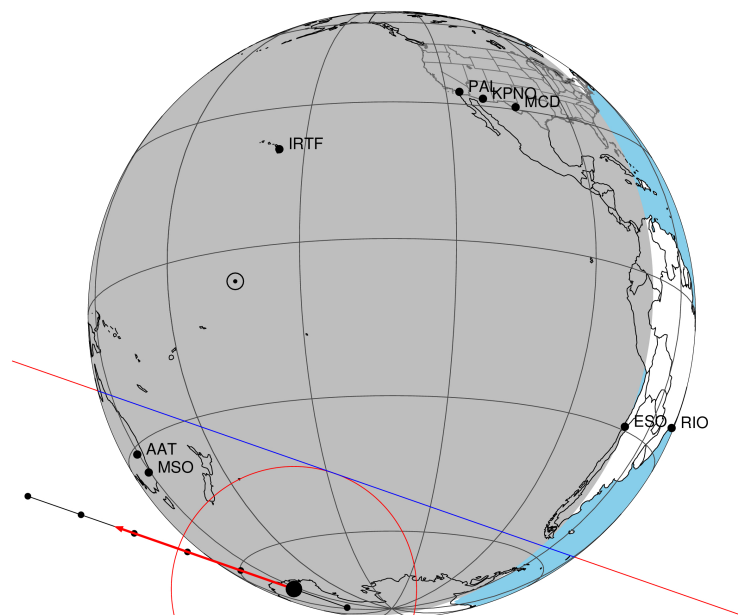
ICRS Star Coord at Epoch: 14h 59m 50.23914s -14:23:18.29421s
 RUWE (>1.4 is poor) : 1.01
 K magnitude : 14.874
 G magnitude : 18.606
 RP magnitude : 17.852
 BP magnitude : 19.436
 DUPflag : 0
 Distance (au) : 8.998
 f0 (km) : 0.00
 g0 (km) : 0.00
 skyplane vel. (km/s) : -19.72
 Sun-Target sep (deg) : 148.19
 Sun-Moon sep (deg) : 90.35
 B (ring opening deg) : 20.93
 PA of pole (deg) : 0.67
 Pole direction: RA (deg): 39.48270
 Dec (deg): 83.42790
 C/A sky separation (") : 0.937
 C/A sky separation (km) : 6113.2
 NAIF SPICE kernels : RAJobs_U111+rgf16.spk

URKALLv1.spk
 naif0012.tls
 nep097.bsp
 nep101.bsp
 sat4401.bsp

Observable events with sun below -5 deg and altitude above 5 deg

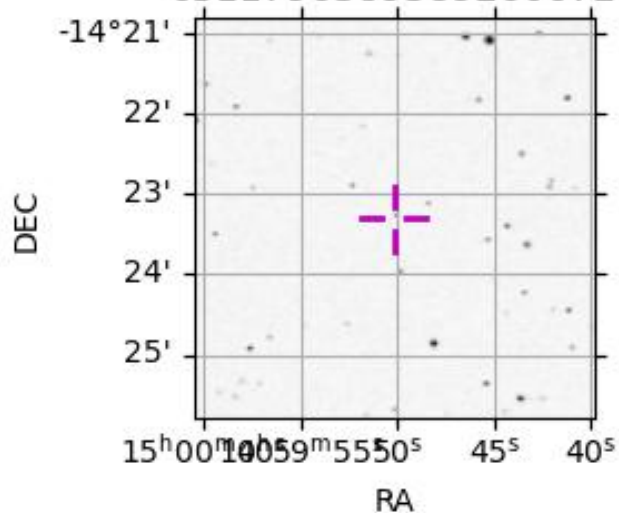
Obs	Location	lat	Elon	Target	Observed Events Interval	OEcode
PIC	Pic du Midi	42.9	0.1			Pnn
PAL	Palomar Mt (200")	33.4	243.1			Pnn
PMO	Purple Mtn Obs. Nanking	32.1	118.8			Pnn
KPNO	Kitt Peak Natl Obs	32.0	248.4			Pnn
MCD	McDonald Obs. 2.7m	30.7	256.0			Pnn
TEN	Teide Obs./Tenerife	28.3	343.5			Pnn
IRTF	Mauna Kea/IRTF	19.8	204.5			Pnn
KAV	Kavalur Observatory	12.6	78.8			Pnn
RIO	Rio de Janeiro	-22.9	316.8			Pnn
ESO	European Southern Obs. (3.6m)	-29.3	289.3			Pnn
AAT	Siding Spring (AAT)	-31.3	149.1	+ +	APR 05 10:58 - APR 05 11:01	Pie
SAAO	So. Afr. Astro. Obs. (Sutherland)	-32.4	20.8			Pnn
MSO	Mt. Stromlo Observatory	-35.3	149.0	+ +	APR 05 10:58 - APR 05 11:01	Pie

Titan 2043-04-05T10:56:45 K14.87 G18.61 dots 60.0 sec
 Pt



2043-04-05T10:56:45.6500 cc: 14 59 50.2391 d: -14 23 18.294 C/A 0.937" PA 199.24 deg v_sky -19.73 km/s D 09.00 AU
 Credit: Styled after SORA/Lucky Star

6311796389589260672



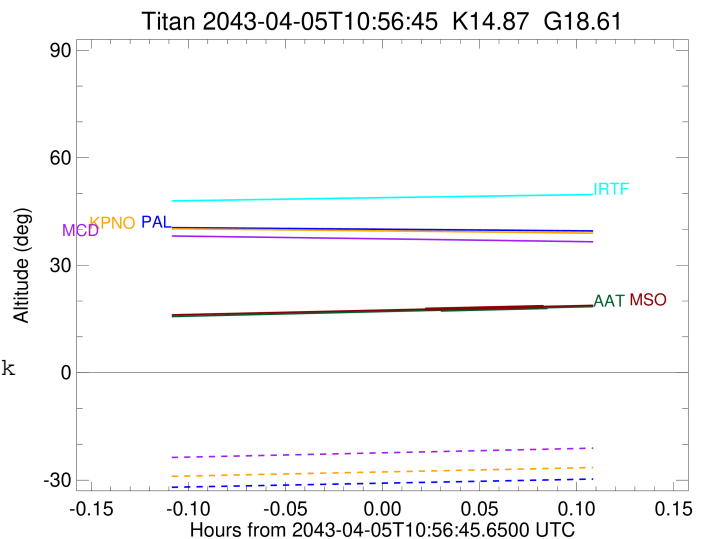
```

target                : Titan
target radius (km)   : 2575.15
C/A epoch             : 2043-04-05T11:00:12.720
Event type            : Pt
: Titan occs: topocentric, not geocentric
: Not a ringed target
Observer code         : AAT
Location              : Siding Spring (AAT)
Latitude (deg)       : -31.27703
E. Longitude (deg)   : 149.06608
Altitude (km)        : 1.164
Gaia source ID       : 6311796389589260672
2Mass ID (if available) : 14595021-1423184
ICRS Star Coord at Epoch: 14h 59m 50.23914s -14:23:18.29421s
RUWE (>1.4 is poor) : 1.01
K magnitude           : 14.874
G magnitude           : 18.606
RP magnitude          : 17.852
BP magnitude          : 19.436
DUPflag              : 0
Distance (au)        : 8.998
f0 (km)               : 0.00
g0 (km)               : 0.00
skyplane vel. (km/s) : -19.72
Sun-Target sep (deg) : 148.19
Sun-Moon sep (deg)   : 90.63
B (ring opening deg) : 20.93
PA of pole (deg)     : 0.67
Pole direction: RA (deg): 39.48270
Dec (deg): 83.42790
C/A sky separation ("): 0.250
C/A sky separation (km): 1633.6
NAIF SPICE kernels   : RAJobs_U111+rgf16.spk
URKALLv1.spk
naif0012.tls
nep097.bsp
nep101.bsp
sat4401.bsp
de440.bsp
earth_720101_070426.bpc
jup365.bsp
urall6.bsp
IAU_SATURN_for_RINGFIT.tpc
pck00010.tpc
earth_200101_990628_predict.bpc
IAU_NEPTUNE_for_RINGFIT.tpc.BECAREFUL
uranus_ringframes_rfrench20220627_v1.tf
neptune_ringframes_rfrench20220702a_v1.tf
earth_flat_IAU.spk

```

x: target alt < 5.0 deg or sun > -5.0 deg

Target	I/E	UTC	alt	alt-sun	radius	lat-geo	lat-geodetic
Titan	I	2043-04-05T10:58:32.049	17.43	-39.50	2575.1	52.06	52.07
Titan	E	2043-04-05T11:01:53.394	18.14	-40.18	2575.1	19.69	19.70



```

target                : Titan
target radius (km)   : 2575.15
C/A epoch            : 2043-04-05T10:59:55.140
Event type           : Pt
: Titan occs: topocentric, not geocentric
: Not a ringed target
Observer code        : MSO
Location             : Mt. Stromlo Observatory
Latitude (deg)       : -35.32000
E. Longitude (deg)   : 149.00833
Altitude (km)        : 0.770
Gaia source ID       : 6311796389589260672
2Mass ID (if available) : 14595021-1423184
ICRS Star Coord at Epoch: 14h 59m 50.23914s -14:23:18.29421s
RUWE (>1.4 is poor) : 1.01
K magnitude           : 14.874
G magnitude           : 18.606
RP magnitude          : 17.852
BP magnitude          : 19.436
DUPflag              : 0
Distance (au)         : 8.998
f0 (km)               : 0.00
g0 (km)               : 0.00
skyplane vel. (km/s) : -19.72
Sun-Target sep (deg) : 148.19
Sun-Moon sep (deg)   : 90.64
B (ring opening deg) : 20.93
PA of pole (deg)     : 0.67
Pole direction: RA (deg): 39.48270
Dec (deg): 83.42790
C/A sky separation (") : 0.207
C/A sky separation (km) : 1353.7
NAIF SPICE kernels   : RAJobs_U111+rgf16.spk
URKALLv1.spk
naif0012.tls
nep097.bsp
nep101.bsp
sat4401.bsp
de440.bsp
earth_720101_070426.bpc
jup365.bsp
urall6.bsp
IAU_SATURN_for_RINGFIT.tpc
pck00010.tpc
earth_200101_990628_predict.bpc
IAU_NEPTUNE_for_RINGFIT.tpc.BECAREFUL
uranus_ringframes_rfrench20220627_v1.tf
neptune_ringframes_rfrench20220702a_v1.tf
earth_flat_IAU.spk

```

x: target alt < 5.0 deg or sun > -5.0 deg

Target	I/E	UTC	alt	alt-sun	radius	lat-geo	lat-geodetic
Titan	I	2043-04-05T10:58:04.331	17.72	-37.92	2575.1	45.65	45.66
Titan	E	2043-04-05T11:01:45.936	18.47	-38.61	2575.2	12.56	12.57

