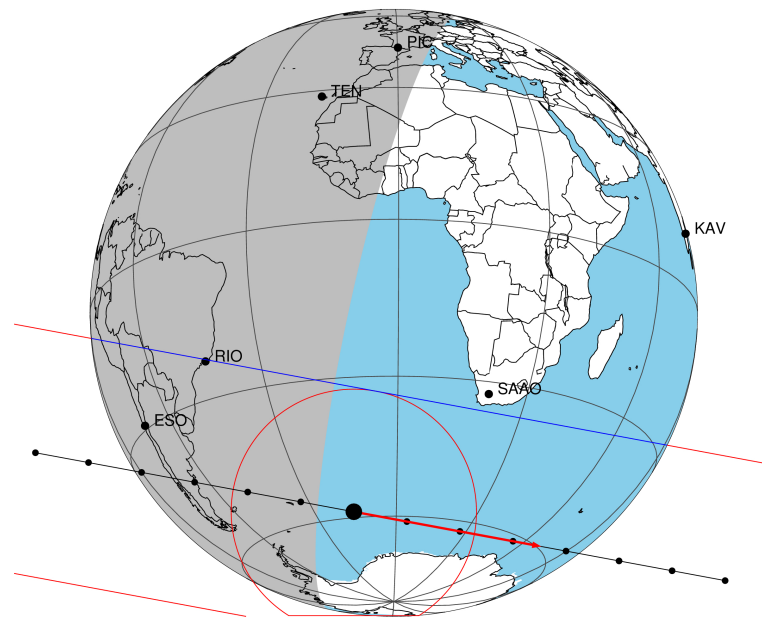


target : Titan
 target radius (km) : 2575.15
 C/A epoch : 2044-02-10T06:35:06.770
 Event type : Pt
 : Titan occs: topocentric, not geocentric
 : Not a ringed target
 Gaia source ID : 6260638007635627520
 2Mass ID (if available) : 15490140-1749288

ICRS Star Coord at Epoch: 15h 49m 01.41452s -17:49:29.67568s
 RUWE (>1.4 is poor) : 1.52
 K magnitude : 12.930
 G magnitude : 14.526
 RP magnitude : 13.985
 BP magnitude : 14.891
 DUPflag : 0
 Distance (au) : 10.032
 f0 (km) : 0.00
 g0 (km) : 0.00
 skyplane vel. (km/s) : 18.88
 Sun-Target sep (deg) : 81.57
 Sun-Moon sep (deg) : 138.39
 B (ring opening deg) : 24.07
 PA of pole (deg) : 2.19
 Pole direction: RA (deg): 39.48270
 Dec (deg): 83.42790
 C/A sky separation (") : 0.586
 C/A sky separation (km) : 4263.5
 NAIF SPICE kernels : RAJobs_U111+rgf16.spk

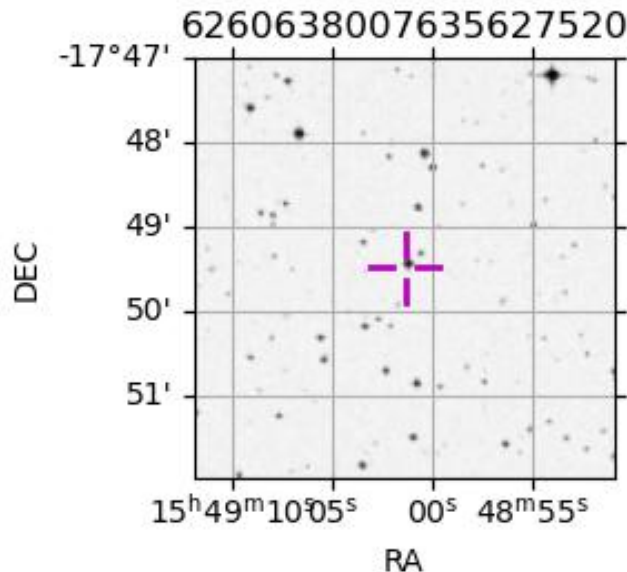
Titan 2044-02-10T06:35:06 K12.93 G14.53 dots 60.0 sec
 Pt



2044-02-10T06:35:06.7700 α: 15 49 01.4145 δ: -17 49 29.676 C/A 0.586" PA 190.51 deg v_sky +18.88 km/s D 10.03 AU
 Credit: Styled after SORA/Lucky Star

Observable events with sun below -5 deg and altitude above 5 deg

Obs	Location	lat	Elon	Target	Observed Events Interval	OCode
PIC	Pic du Midi	42.9	0.1			Pnn
PAL	Palomar Mt (200")	33.4	243.1			Pnn
PMO	Purple Mtn Obs. Nanking	32.1	118.8			Pnn
KPNO	Kitt Peak Natl Obs	32.0	248.4			Pnn
MCD	McDonald Obs. 2.7m	30.7	256.0			Pnn
TEN	Teide Obs./Tenerife	28.3	343.5			Pnn
IRTF	Mauna Kea/IRTF	19.8	204.5			Pnn
KAV	Kavalur Observatory	12.6	78.8			Pnn
RIO	Rio de Janeiro	-22.9	316.8	+ +	FEB 10 06:31 - FEB 10 06:32	Pie
ESO	European Southern Obs. (3.6m)	-29.3	289.3	+ +	FEB 10 06:28 - FEB 10 06:33	Pie
AAT	Siding Spring (AAT)	-31.3	149.1			Pnn
SAAO	So. Afr. Astro. Obs. (Sutherland)	-32.4	20.8			Pnn
MSO	Mt. Stromlo Observatory	-35.3	149.0			Pnn



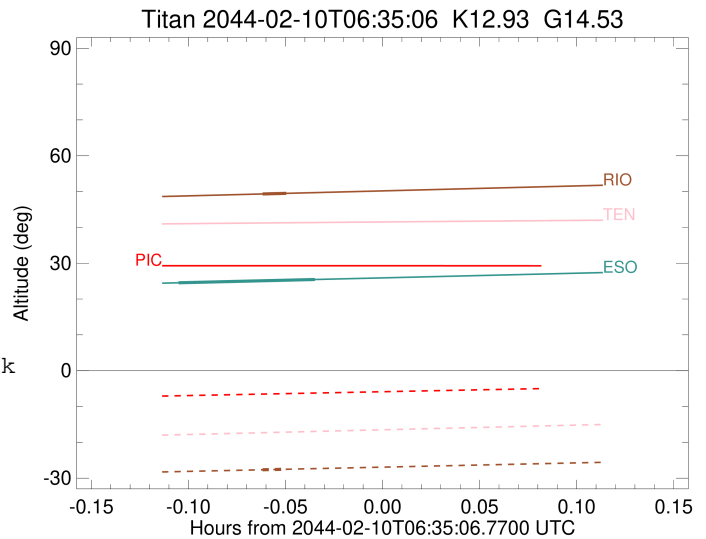
```

target                : Titan
target radius (km)   : 2575.15
C/A epoch             : 2044-02-10T06:31:45.960
Event type            : Pt
: Titan occs: topocentric, not geocentric
: Not a ringed target
Observer code         : RIO
Location              : Rio de Janeiro
Latitude (deg)        : -22.89506
E. Longitude (deg)   : 316.77708
Altitude (km)         : 0.033
Gaia source ID       : 6260638007635627520
2Mass ID (if available) : 15490140-1749288
ICRS Star Coord at Epoch: 15h 49m 01.41452s -17:49:29.67568s
RUWE (>1.4 is poor) : 1.52
K magnitude           : 12.930
G magnitude           : 14.526
RP magnitude          : 13.985
BP magnitude          : 14.891
DUPflag              : 0
Distance (au)         : 10.032
f0 (km)               : 0.00
g0 (km)               : 0.00
skyplane vel. (km/s) : 18.88
Sun-Target sep (deg) : 81.57
Sun-Moon sep (deg)   : 139.28
B (ring opening deg) : 24.07
PA of pole (deg)     : 2.19
Pole direction: RA (deg): 39.48270
Dec (deg): 83.42790
C/A sky separation (") : 0.349
C/A sky separation (km) : 2538.6
NAIF SPICE kernels   : RAJobs_U111+rgf16.spk
URKALLv1.spk
naif0012.tls
nep097.bsp
nep101.bsp
sat4401.bsp
de440.bsp
earth_720101_070426.bpc
jup365.bsp
urall6.bsp
IAU_SATURN_for_RINGFIT.tpc
pck00010.tpc
earth_200101_990628_predict.bpc
IAU_NEPTUNE_for_RINGFIT.tpc.BECAREFUL
uranus_ringframes_rfrench20220627_v1.tf
neptune_ringframes_rfrench20220702a_v1.tf
earth_flat_IAU.spk

```

x: target alt < 5.0 deg or sun > -5.0 deg

Target	I/E	UTC	alt	alt-sun	radius	lat-geo	lat-geodetic
Titan	I	2044-02-10T06:31:22.721	49.32	-27.67	2575.1	60.03	60.04
Titan	E	2044-02-10T06:32:09.196	49.49	-27.51	2575.1	65.91	65.93



```

target                : Titan
target radius (km)   : 2575.15
C/A epoch            : 2044-02-10T06:30:54.750
Event type           : Pt
: Titan occs: topocentric, not geocentric
: Not a ringed target
Observer code        : ESO
Location             : European Southern Obs. (3.6m)
Latitude (deg)       : -29.26097
E. Longitude (deg)  : 289.26831
Altitude (km)        : 2.400
Gaia source ID       : 6260638007635627520
2Mass ID (if available) : 15490140-1749288
ICRS Star Coord at Epoch: 15h 49m 01.41452s -17:49:29.67568s
RUWE (>1.4 is poor) : 1.52
K magnitude           : 12.930
G magnitude           : 14.526
RP magnitude          : 13.985
BP magnitude          : 14.891
DUPflag              : 0
Distance (au)        : 10.032
f0 (km)              : 0.00
g0 (km)              : 0.00
skyplane vel. (km/s) : 18.88
Sun-Target sep (deg) : 81.57
Sun-Moon sep (deg)   : 139.14
B (ring opening deg) : 24.07
PA of pole (deg)     : 2.19
Pole direction: RA (deg): 39.48270
Dec (deg): 83.42790
C/A sky separation (") : 0.134
C/A sky separation (km) : 975.5
NAIF SPICE kernels   : RAJobs_U111+rgf16.spk
URKALLv1.spk
naif0012.tls
nep097.bsp
nep101.bsp
sat4401.bsp
de440.bsp
earth_720101_070426.bpc
jup365.bsp
urall6.bsp
IAU_SATURN_for_RINGFIT.tpc
pck00010.tpc
earth_200101_990628_predict.bpc
IAU_NEPTUNE_for_RINGFIT.tpc.BECAREFUL
uranus_ringframes_rfrench20220627_v1.tf
neptune_ringframes_rfrench20220702a_v1.tf
earth_flat_IAU.spk

```

x: target alt < 5.0 deg or sun > -5.0 deg

Target	I/E	UTC	alt	alt-sun	radius	lat-geo	lat-geodetic
Titan	I	2044-02-10T06:28:47.853	24.53	-41.14	2575.2	12.33	12.33
Titan	E	2044-02-10T06:33:01.690	25.45	-40.67	2575.1	28.05	28.06

