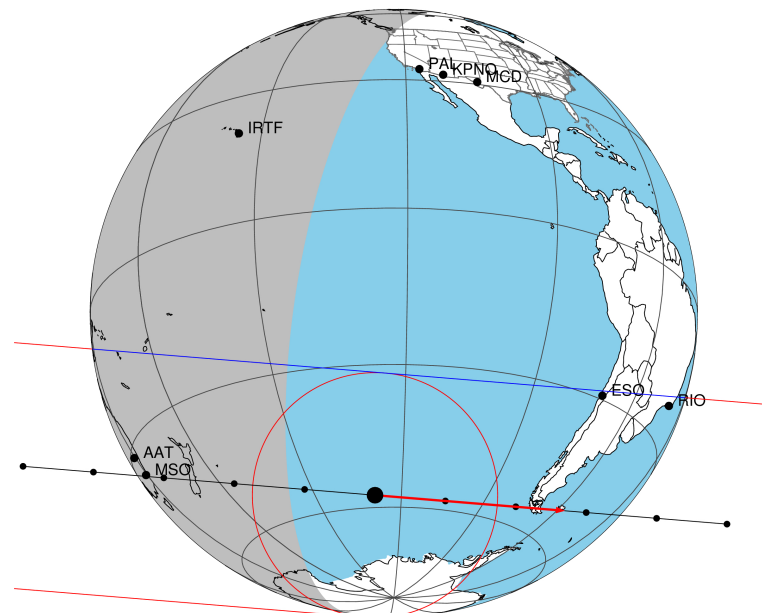


target : Titan
 target radius (km) : 2575.15
 C/A epoch : 2045-02-09T15:26:42.260
 Event type : Pt
 : Titan occs: topocentric, not geocentric
 : Not a ringed target
 Gaia source ID : 4131017678374566912
 2Mass ID (if available) : 16340543-2006263

ICRS Star Coord at Epoch: 16h 34m 05.37649s -20:06:26.82581s
 RUWE (>1.4 is poor) : 2.13
 K magnitude : 14.197
 G magnitude : 18.145
 RP magnitude : 16.935
 BP magnitude : 19.501
 DUPflag : 0
 Distance (au) : 10.275
 f0 (km) : 0.00
 g0 (km) : 0.00
 skyplane vel. (km/s) : 24.71
 Sun-Target sep (deg) : 70.79
 Sun-Moon sep (deg) : 11.85
 B (ring opening deg) : 25.82
 PA of pole (deg) : 3.54
 Pole direction: RA (deg): 39.48270
 Dec (deg): 83.42790
 C/A sky separation (") : 0.517
 C/A sky separation (km) : 3856.2
 NAIF SPICE kernels : RAJobs_U111+rgf16.spk
 URKALLv1.spk
 naif0012.tls
 nep097.bsp
 nep101.bsp
 sat4401.bsp

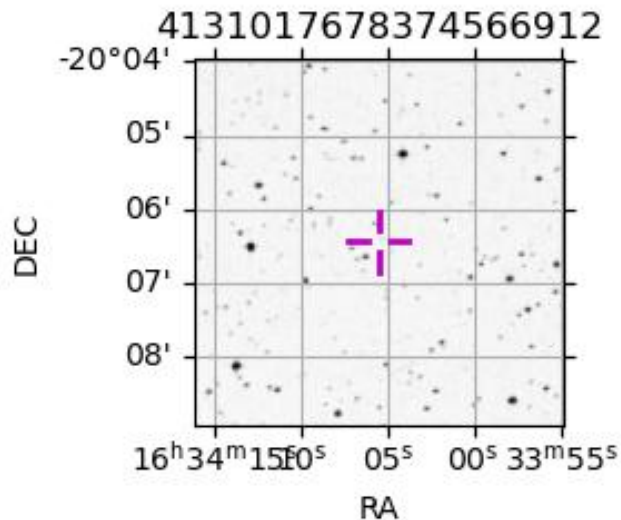
Titan 2045-02-09T15:26:42 K14.20 G18.15 dots 60.0 sec
 Pt



2045-02-09T15:26:42.2600 α: 16 34 05.3765 δ: -20 06 26.826 C/A 0.517" PA 184.69 deg v_sky +24.72 km/s D 10.28 AU
 Credit: Styled after SORA/Lucky Star

Observable events with sun below -5 deg and altitude above 5 deg

Obs	Location	lat	Elon	Target	Observed Events Interval	OEcode
PIC	Pic du Midi	42.9	0.1			Pnn
PAL	Palomar Mt (200")	33.4	243.1			Pnn
PMO	Purple Mtn Obs. Nanking	32.1	118.8			Pnn
KPNO	Kitt Peak Natl Obs	32.0	248.4			Pnn
MCD	McDonald Obs. 2.7m	30.7	256.0			Pnn
TEN	Teide Obs./Tenerife	28.3	343.5			Pnn
IRTF	Mauna Kea/IRTF	19.8	204.5			Pnn
KAV	Kavalur Observatory	12.6	78.8			Pnn
RIO	Rio de Janeiro	-22.9	316.8			Pnn
ESO	European Southern Obs. (3.6m)	-29.3	289.3			Pnn
AAT	Siding Spring (AAT)	-31.3	149.1	+ +	FEB 09 15:21 - FEB 09 15:24	Pie
SAAO	So. Afr. Astro. Obs. (Sutherland)	-32.4	20.8			Pnn
MSO	Mt. Stromlo Observatory	-35.3	149.0	+ +	FEB 09 15:21 - FEB 09 15:25	Pie



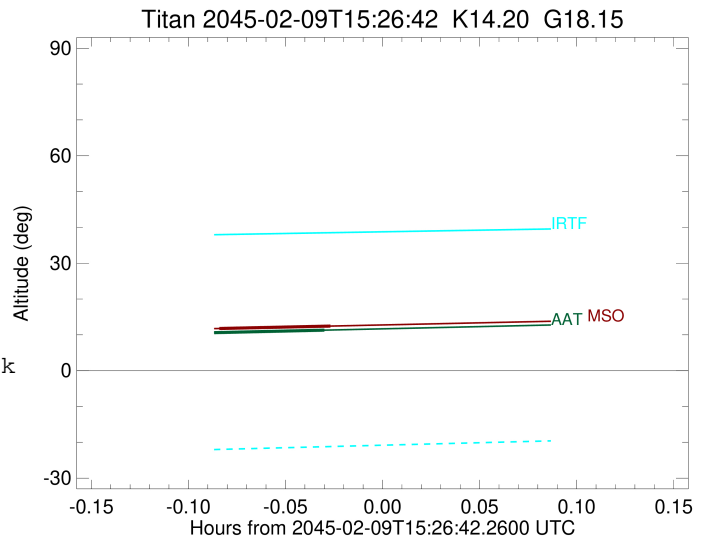
```

target                : Titan
target radius (km)   : 2575.15
C/A epoch             : 2045-02-09T15:23:11.690
Event type            : Pt
: Titan occs: topocentric, not geocentric
: Not a ringed target
Observer code         : AAT
Location              : Siding Spring (AAT)
Latitude (deg)       : -31.27703
E. Longitude (deg)   : 149.06608
Altitude (km)        : 1.164
Gaia source ID       : 4131017678374566912
2Mass ID (if available) : 16340543-2006263
ICRS Star Coord at Epoch: 16h 34m 05.37649s -20:06:26.82581s
RUWE (>1.4 is poor) : 2.13
K magnitude           : 14.197
G magnitude           : 18.145
RP magnitude          : 16.935
BP magnitude          : 19.501
DUPflag              : 0
Distance (au)        : 10.275
f0 (km)              : 0.00
g0 (km)              : 0.00
skyplane vel. (km/s) : 24.71
Sun-Target sep (deg) : 70.79
Sun-Moon sep (deg)   : 11.00
B (ring opening deg) : 25.82
PA of pole (deg)     : 3.54
Pole direction: RA (deg): 39.48270
Dec (deg): 83.42790
C/A sky separation (") : 0.051
C/A sky separation (km) : 379.9
NAIF SPICE kernels   : RAJobs_U111+rgf16.spk
URKALLv1.spk
naif0012.tls
nep097.bsp
nep101.bsp
sat4401.bsp
de440.bsp
earth_720101_070426.bpc
jup365.bsp
urall6.bsp
IAU_SATURN_for_RINGFIT.tpc
pck00010.tpc
earth_200101_990628_predict.bpc
IAU_NEPTUNE_for_RINGFIT.tpc.BECAREFUL
uranus_ringframes_rfrench20220627_v1.tf
neptune_ringframes_rfrench20220702a_v1.tf
earth_flat_IAU.spk

```

x: target alt < 5.0 deg or sun > -5.0 deg

Target	I/E	UTC	alt	alt-sun	radius	lat-geo	lat-geodetic
Titan	I	2045-02-09T15:21:28.669	10.60	-41.99	2575.1	6.30	6.31
Titan	E	2045-02-09T15:24:54.717	11.31	-41.72	2575.1	8.95	8.95



```

target                : Titan
target radius (km)   : 2575.15
C/A epoch             : 2045-02-09T15:23:22.810
Event type            : Pt
: Titan occs: topocentric, not geocentric
: Not a ringed target
Observer code         : MSO
Location              : Mt. Stromlo Observatory
Latitude (deg)       : -35.32000
E. Longitude (deg)   : 149.00833
Altitude (km)        : 0.770
Gaia source ID       : 4131017678374566912
2Mass ID (if available) : 16340543-2006263
ICRS Star Coord at Epoch: 16h 34m 05.37649s -20:06:26.82581s
RUWE (>1.4 is poor) : 2.13
K magnitude           : 14.197
G magnitude           : 18.145
RP magnitude          : 16.935
BP magnitude          : 19.501
DUPflag              : 0
Distance (au)        : 10.275
f0 (km)              : 0.00
g0 (km)              : 0.00
skyplane vel. (km/s) : 24.71
Sun-Target sep (deg) : 70.79
Sun-Moon sep (deg)   : 11.01
B (ring opening deg) : 25.82
PA of pole (deg)     : 3.54
Pole direction: RA (deg): 39.48270
Dec (deg): 83.42790
C/A sky separation (") : 0.007
C/A sky separation (km) : 49.3
NAIF SPICE kernels   : RAJobs_U111+rgf16.spk
URKALLv1.spk
naif0012.tls
nep097.bsp
nep101.bsp
sat4401.bsp
de440.bsp
earth_720101_070426.bpc
jup365.bsp
urall6.bsp
IAU_SATURN_for_RINGFIT.tpc
pck00010.tpc
earth_200101_990628_predict.bpc
IAU_NEPTUNE_for_RINGFIT.tpc.BECAREFUL
uranus_ringframes_rfrench20220627_v1.tf
neptune_ringframes_rfrench20220702a_v1.tf
earth_flat_IAU.spk

```

x: target alt < 5.0 deg or sun > -5.0 deg

Target	I/E	UTC	alt	alt-sun	radius	lat-geo	lat-geodetic
Titan	I	2045-02-09T15:21:38.669	11.76	-38.21	2575.1	-0.38	-0.38
Titan	E	2045-02-09T15:25:06.961	12.45	-37.97	2575.1	2.25	2.25

