

target : Titan
 target radius (km) : 2575.15
 C/A epoch : 2046-02-21T20:15:40.470
 Event type : Pt
 : Titan occs: topocentric, not geocentric
 : Not a ringed target
 Gaia source ID : 4114870216295614592
 2Mass ID (if available) : 17224031-2141578

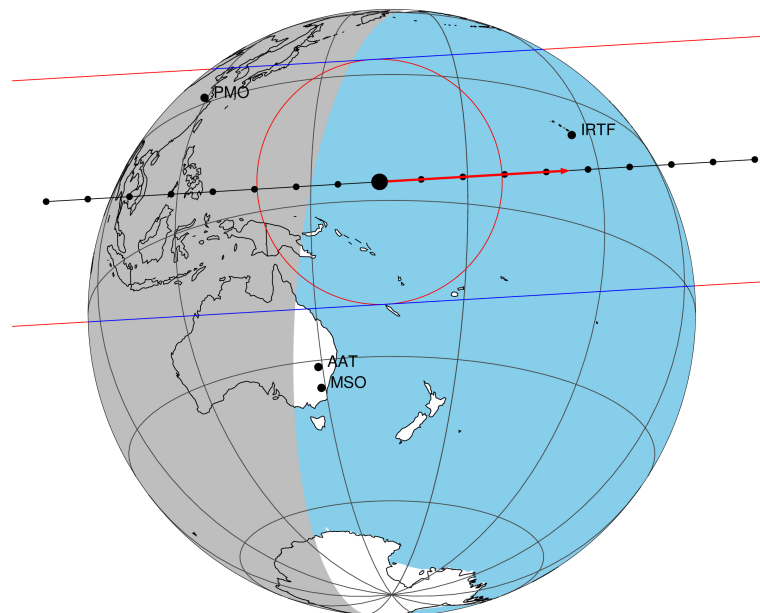
ICRS Star Coord at Epoch: 17h 22m 40.30216s -21:41:58.01219s
 RUWE (>1.4 is poor) : 1.07
 K magnitude : 13.055
 G magnitude : 16.458
 RP magnitude : 15.472
 BP magnitude : 17.397
 DUPflag : 0
 Distance (au) : 10.292
 f0 (km) : 0.00
 g0 (km) : 0.00
 skyplane vel. (km/s) : 14.62
 Sun-Target sep (deg) : 71.39
 Sun-Moon sep (deg) : 96.50
 B (ring opening deg) : 26.57
 PA of pole (deg) : 4.83
 Pole direction: RA (deg): 39.48270
 Dec (deg): 83.42790
 C/A sky separation (") : 0.368
 C/A sky separation (km) : 2750.4
 NAIF SPICE kernels : RAJobs_U111+rgf16.spk

URKALLv1.spk
 naif0012.tls
 nep097.bsp
 nep101.bsp
 sat4401.bsp

Observable events with sun below -5 deg and altitude above 5 deg

Obs	Location	lat	Elon	Target	Observed Events Interval	OEcode
PIC	Pic du Midi	42.9	0.1			Pnn
PAL	Palomar Mt (200")	33.4	243.1			Pnn
PMO	Purple Mtn Obs. Nanking	32.1	118.8	+ +	FEB 21 20:09 - FEB 21 20:13	Pie
KPNO	Kitt Peak Natl Obs	32.0	248.4			Pnn
MCD	McDonald Obs. 2.7m	30.7	256.0			Pnn
TEN	Teide Obs./Tenerife	28.3	343.5			Pnn
IRTF	Mauna Kea/IRTF	19.8	204.5			Pnn
KAV	Kavalur Observatory	12.6	78.8			Pnn
RIO	Rio de Janeiro	-22.9	316.8			Pnn
ESO	European Southern Obs. (3.6m)	-29.3	289.3			Pnn
AAT	Siding Spring (AAT)	-31.3	149.1			Pnn
SAAO	So. Afr. Astro. Obs. (Sutherland)	-32.4	20.8			Pnn
MSO	Mt. Stromlo Observatory	-35.3	149.0			Pnn

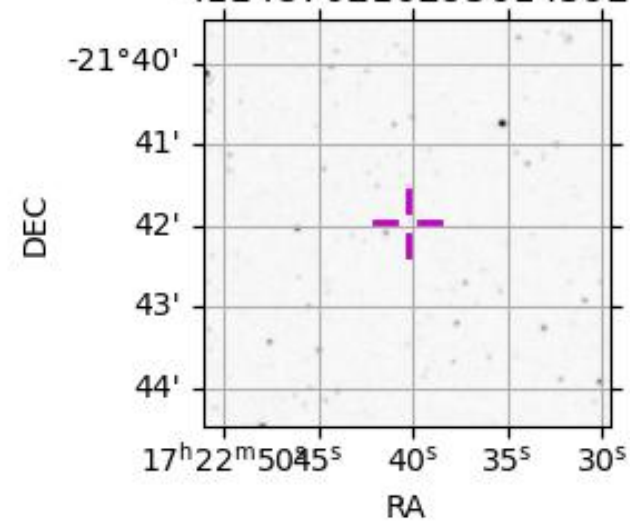
Titan 2046-02-21T20:15:40 K13.05 G16.46 dots 60.0 sec
 Pt



2046-02-21T20:15:40.4700 α: 17 22 40.3022 δ: -21 41 58.012 C/A 0.370" PA 356.60 deg v_sky +14.61 km/s D 10.29 AU

Credit: Styled after SORA/Lucky Star

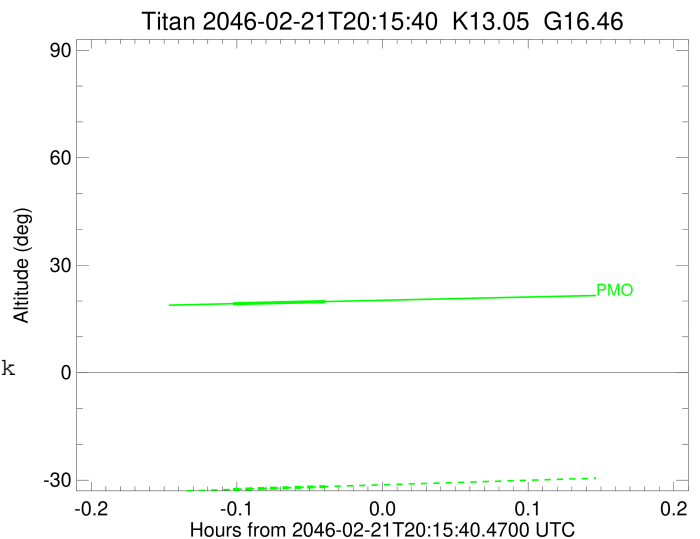
4114870216295614592



```

target                : Titan
target radius (km)   : 2575.15
C/A epoch            : 2046-02-21T20:11:25.730
Event type           : Pt
: Titan occs: topocentric, not geocentric
: Not a ringed target
Observer code        : PMO
Location             : Purple Mtn Obs. Nanking
Latitude (deg)       : 32.06667
E. Longitude (deg)   : 118.82089
Altitude (km)        : 0.364
Gaia source ID       : 4114870216295614592
2Mass ID (if available) : 17224031-2141578
ICRS Star Coord at Epoch: 17h 22m 40.30216s -21:41:58.01219s
RUWE (>1.4 is poor) : 1.07
K magnitude          : 13.055
G magnitude          : 16.458
RP magnitude         : 15.472
BP magnitude         : 17.397
DUPflag             : 0
Distance (au)        : 10.292
f0 (km)              : 0.00
g0 (km)              : 0.00
skyplane vel. (km/s) : 14.62
Sun-Target sep (deg) : 71.39
Sun-Moon sep (deg)   : 96.93
B (ring opening deg) : 26.57
PA of pole (deg)     : 4.83
Pole direction: RA (deg): 39.48270
Dec (deg): 83.42790
C/A sky separation ("): 0.264
C/A sky separation (km): 1971.9
NAIF SPICE kernels   : RAJobs_U111+rgf16.spk
URKALLv1.spk
naif0012.tls
nep097.bsp
nep101.bsp
sat4401.bsp
de440.bsp
earth_720101_070426.bpc
jup365.bsp
urall6.bsp
IAU_SATURN_for_RINGFIT.tpc
pck00010.tpc
earth_200101_990628_predict.bpc
IAU_NEPTUNE_for_RINGFIT.tpc.BECAREFUL
uranus_ringframes_rfrench20220627_v1.tf
neptune_ringframes_rfrench20220702a_v1.tf
earth_flat_IAU.spk

```



x: target alt < 5.0 deg or sun > -5.0 deg

Target	I/E	UTC	alt	alt-sun	radius	lat-geo	lat-geodetic
Titan	I	2046-02-21T20:09:30.239	19.25	-32.60	2575.1	49.21	49.22
Titan	E	2046-02-21T20:13:21.242	19.85	-31.79	2575.1	36.85	36.86