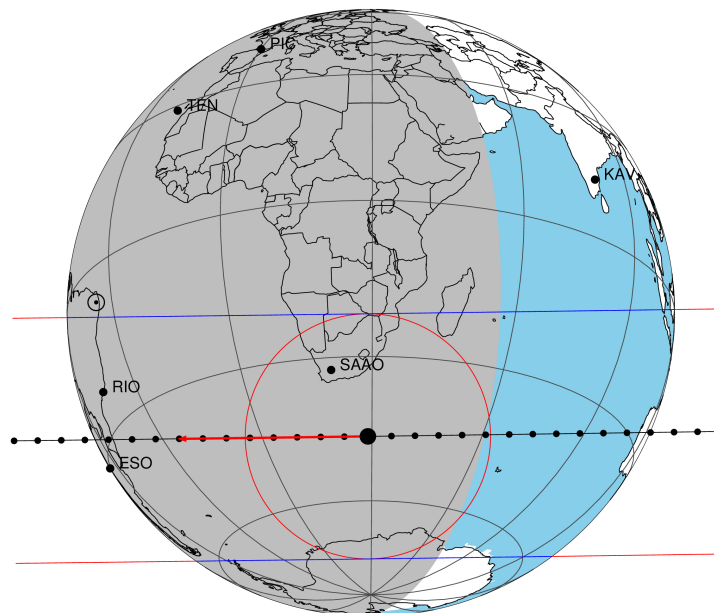


target : Titan
 target radius (km) : 2575.15
 C/A epoch : 2046-04-08T02:25:45.010
 Event type : Pt
 : Titan occs: topocentric, not geocentric
 : Not a ringed target
 Gaia source ID : 4117825493050545408
 2Mass ID (if available) : 17275861-2142464

ICRS Star Coord at Epoch: 17h 27m 58.59602s -21:42:46.60612s
 RUWE (>1.4 is poor) : 1.02
 K magnitude : 13.471
 G magnitude : 17.220
 RP magnitude : 16.140
 BP magnitude : 18.398
 DUPflag : 0
 Distance (au) : 9.555
 f0 (km) : 0.00
 g0 (km) : 0.00
 skyplane vel. (km/s) : -8.24
 Sun-Target sep (deg) : 115.22
 Sun-Moon sep (deg) : 132.82
 B (ring opening deg) : 26.48
 PA of pole (deg) : 4.96
 Pole direction: RA (deg): 39.48270
 Dec (deg): 83.42790
 C/A sky separation (") : 0.375
 C/A sky separation (km) : 2601.3
 NAIF SPICE kernels : RAJobs_U111+rgf16.spk

Titan 2046-04-08T02:25:45 K13.47 G17.22 dots 60.0 sec
 Pt



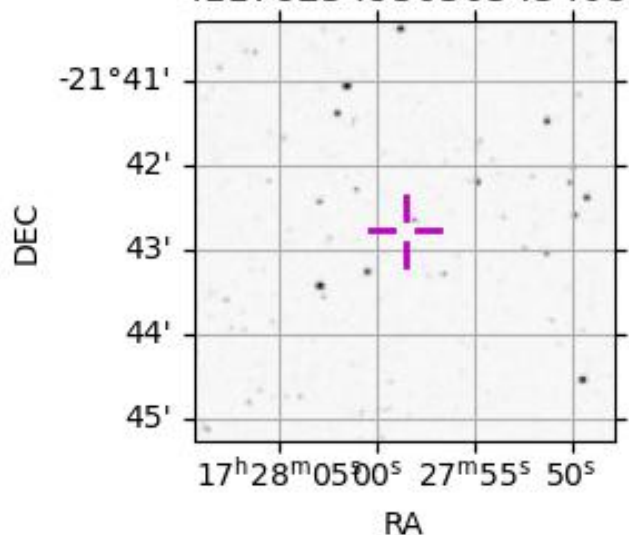
2046-04-08T02:25:45.0100 α: 17 27 58.59602 δ: -21 42 46.606 C/A 0.374" PA 179.23 deg v_sky - 8.25 km/s D 09.56 AU

Credit: Styled after SORA/Lucky Star

Observable events with sun below -5 deg and altitude above 5 deg

Obs	Location	lat	Elon	Target	Observed Events Interval	OEcode
PIC	Pic du Midi	42.9	0.1			Pnn
PAL	Palomar Mt (200")	33.4	243.1			Pnn
PMO	Purple Mtn Obs. Nanking	32.1	118.8			Pnn
KPNO	Kitt Peak Natl Obs	32.0	248.4			Pnn
MCD	McDonald Obs. 2.7m	30.7	256.0			Pnn
TEN	Teide Obs./Tenerife	28.3	343.5			Pnn
IRTF	Mauna Kea/IRTF	19.8	204.5			Pnn
KAV	Kavalur Observatory	12.6	78.8			Pnn
RIO	Rio de Janeiro	-22.9	316.8	+ +	APR 08 02:32 - APR 08 02:41	Pie
ESO	European Southern Obs. (3.6m)	-29.3	289.3	+ +	APR 08 02:42 - APR 08 02:42	Pne
AAT	Siding Spring (AAT)	-31.3	149.1			Pnn
SAAO	So. Afr. Astro. Obs. (Sutherland)	-32.4	20.8	+ +	APR 08 02:23 - APR 08 02:31	Pie
MSO	Mt. Stromlo Observatory	-35.3	149.0			Pnn

4117825493050545408



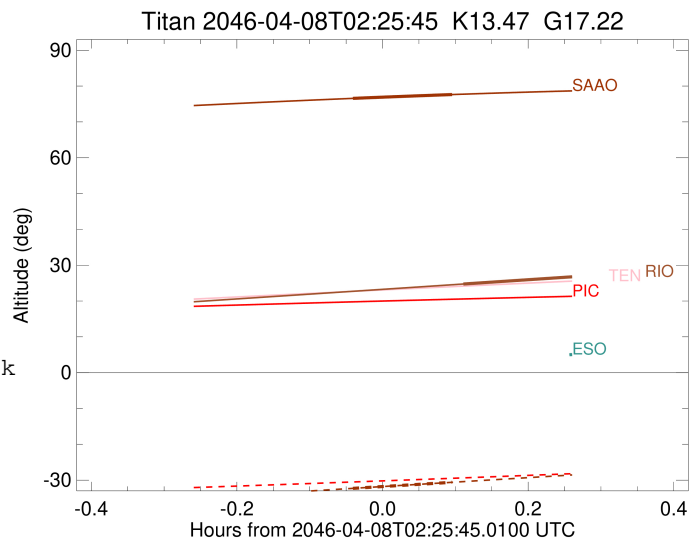
```

target                : Titan
target radius (km)   : 2575.15
C/A epoch            : 2046-04-08T02:36:55.890
Event type           : Pt
: Titan occs: topocentric, not geocentric
: Not a ringed target
Observer code        : RIO
Location             : Rio de Janeiro
Latitude (deg)       : -22.89506
E. Longitude (deg)   : 316.77708
Altitude (km)        : 0.033
Gaia source ID       : 4117825493050545408
2Mass ID (if available) : 17275861-2142464
ICRS Star Coord at Epoch: 17h 27m 58.59602s -21:42:46.60612s
RUWE (>1.4 is poor) : 1.02
K magnitude           : 13.471
G magnitude           : 17.220
RP magnitude          : 16.140
BP magnitude          : 18.398
DUPflag              : 0
Distance (au)         : 9.555
f0 (km)               : 0.00
g0 (km)               : 0.00
skyplane vel. (km/s) : -8.24
Sun-Target sep (deg) : 115.22
Sun-Moon sep (deg)   : 132.53
B (ring opening deg) : 26.48
PA of pole (deg)     : 4.96
Pole direction: RA (deg): 39.48270
Dec (deg): 83.42790
C/A sky separation (") : 0.166
C/A sky separation (km) : 1149.5
NAIF SPICE kernels   : RAJobs_U111+rgf16.spk
URKALLv1.spk
naif0012.tls
nep097.bsp
nep101.bsp
sat4401.bsp
de440.bsp
earth_720101_070426.bpc
jup365.bsp
urall6.bsp
IAU_SATURN_for_RINGFIT.tpc
pck00010.tpc
earth_200101_990628_predict.bpc
IAU_NEPTUNE_for_RINGFIT.tpc.BECAREFUL
uranus_ringframes_rfrench20220627_v1.tf
neptune_ringframes_rfrench20220702a_v1.tf
earth_flat_IAU.spk

```

x: target alt < 5.0 deg or sun > -5.0 deg

Target	I/E	UTC	alt	alt-sun	radius	lat-geo	lat-geodetic
Titan	I	2046-04-08T02:32:21.568	24.73	-73.57	2575.1	17.68	17.69
Titan	E	2046-04-08T02:41:29.811	26.78	-74.15	2575.1	29.31	29.33

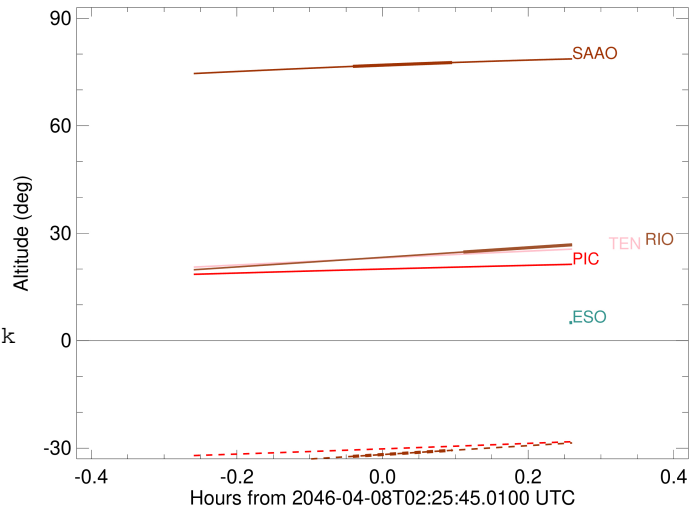


```

target                : Titan
target radius (km)   : 2575.15
C/A epoch             : 2046-04-08T02:37:01.860
Event type            : Pt
: Titan occs: topocentric, not geocentric
: Not a ringed target
Observer code         : ESO
Location              : European Southern Obs. (3.6m)
Latitude (deg)        : -29.26097
E. Longitude (deg)    : 289.26831
Altitude (km)         : 2.400
Gaia source ID        : 4117825493050545408
2Mass ID (if available) : 17275861-2142464
ICRS Star Coord at Epoch: 17h 27m 58.59602s -21:42:46.60612s
RUWE (>1.4 is poor)  : 1.02
K magnitude           : 13.471
G magnitude           : 17.220
RP magnitude          : 16.140
BP magnitude          : 18.398
DUPflag              : 0
Distance (au)         : 9.555
f0 (km)               : 0.00
g0 (km)               : 0.00
skyplane vel. (km/s)  : -8.24
Sun-Target sep (deg)  : 115.22
Sun-Moon sep (deg)    : 132.29
B (ring opening deg)  : 26.48
PA of pole (deg)      : 4.96
Pole direction: RA (deg): 39.48270
Dec (deg): 83.42790
C/A sky separation (") : 0.066
C/A sky separation (km) : 453.9
NAIF SPICE kernels    : RAJobs_U111+rgf16.spk
URKALLv1.spk
naif0012.tls
nep097.bsp
nep101.bsp
sat4401.bsp
de440.bsp
earth_720101_070426.bpc
jup365.bsp
urall6.bsp
IAU_SATURN_for_RINGFIT.tpc
pck00010.tpc
earth_200101_990628_predict.bpc
IAU_NEPTUNE_for_RINGFIT.tpc.BECAREFUL
uranus_ringframes_rfrench20220627_v1.tf
neptune_ringframes_rfrench20220702a_v1.tf
earth_flat_IAU.spk

```

Titan 2046-04-08T02:25:45 K13.47 G17.22



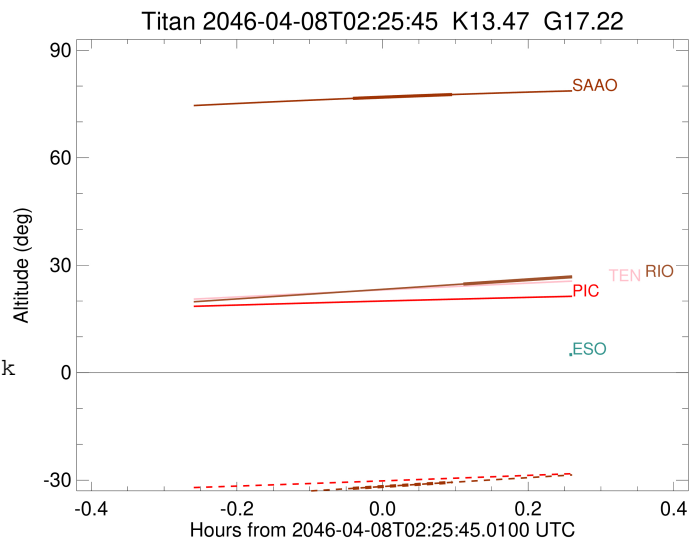
x: target alt < 5.0 deg or sun > -5.0 deg

Target	I/E	UTC	alt	alt-sun	radius	lat-geo	lat-geodetic
Titan	I	2046-04-08T02:31:52.794	3.14x	-51.85	2575.1	-15.06	-15.06
Titan	E	2046-04-08T02:42:10.420	5.22	-53.81	2575.2	-3.09	-3.09

```

target                : Titan
target radius (km)   : 2575.15
C/A epoch             : 2046-04-08T02:27:23.710
Event type            : Pt
: Titan occs: topocentric, not geocentric
: Not a ringed target
Observer code         : SAAO
Location              : So. Afr. Astro. Obs. (Sutherland)
Latitude (deg)       : -32.37953
E. Longitude (deg)   : 20.81070
Altitude (km)        : 1.768
Gaia source ID       : 4117825493050545408
2Mass ID (if available) : 17275861-2142464
ICRS Star Coord at Epoch: 17h 27m 58.59602s -21:42:46.60612s
RUWE (>1.4 is poor) : 1.02
K magnitude           : 13.471
G magnitude           : 17.220
RP magnitude          : 16.140
BP magnitude          : 18.398
DUPflag              : 0
Distance (au)         : 9.555
f0 (km)               : 0.00
g0 (km)               : 0.00
skyplane vel. (km/s) : -8.24
Sun-Target sep (deg) : 115.22
Sun-Moon sep (deg)   : 133.38
B (ring opening deg) : 26.48
PA of pole (deg)     : 4.96
Pole direction: RA (deg): 39.48270
Dec (deg): 83.42790
C/A sky separation ("): 0.207
C/A sky separation (km): 1437.3
NAIF SPICE kernels   : RAJobs_U111+rgf16.spk
URKALLv1.spk
naif0012.tls
nep097.bsp
nep101.bsp
sat4401.bsp
de440.bsp
earth_720101_070426.bpc
jup365.bsp
urall6.bsp
IAU_SATURN_for_RINGFIT.tpc
pck00010.tpc
earth_200101_990628_predict.bpc
IAU_NEPTUNE_for_RINGFIT.tpc.BECAREFUL
uranus_ringframes_rfrench20220627_v1.tf
neptune_ringframes_rfrench20220702a_v1.tf
earth_flat_IAU.spk

```



x: target alt < 5.0 deg or sun > -5.0 deg

Target	I/E	UTC	alt	alt-sun	radius	lat-geo	lat-geodetic
Titan	I	2046-04-08T02:23:16.242	76.55	-32.30	2575.1	24.94	24.95
Titan	E	2046-04-08T02:31:31.043	77.63	-30.60	2575.1	34.89	34.90