

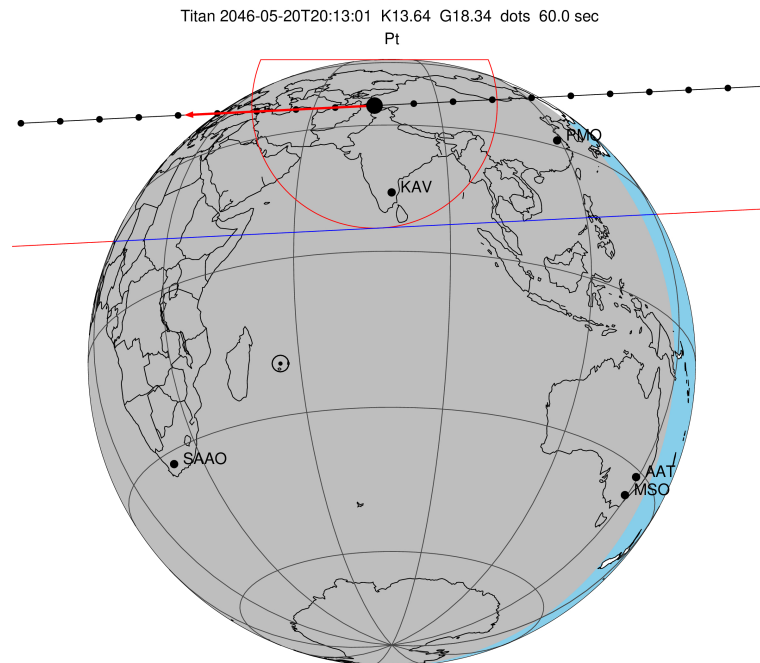
target : Titan  
 target radius (km) : 2575.15  
 C/A epoch : 2046-05-20T20:13:01.610  
 Event type : Pt  
 : Titan occs: topocentric, not geocentric  
 : Not a ringed target  
 Gaia source ID : 4115055067343798400  
 2Mass ID (if available) : 17202441-2132090

ICRS Star Coord at Epoch: 17h 20m 24.35563s -21:32:09.54541s  
 RUWE (>1.4 is poor) : 1.01  
 K magnitude : 13.641  
 G magnitude : 18.335  
 RP magnitude : 17.014  
 BP magnitude : 20.245  
 DUPflag : 0  
 Distance (au) : 9.090  
 f0 (km) : 0.00  
 g0 (km) : 0.00  
 skyplane vel. (km/s) : -13.77  
 Sun-Target sep (deg) : 158.49  
 Sun-Moon sep (deg) : 13.53  
 B (ring opening deg) : 26.45  
 PA of pole (deg) : 4.77  
 Pole direction: RA (deg): 39.48270  
 Dec (deg): 83.42790  
 C/A sky separation (") : 0.820  
 C/A sky separation (km) : 5405.1  
 NAIF SPICE kernels : RAJobs\_U111+rgf16.spk

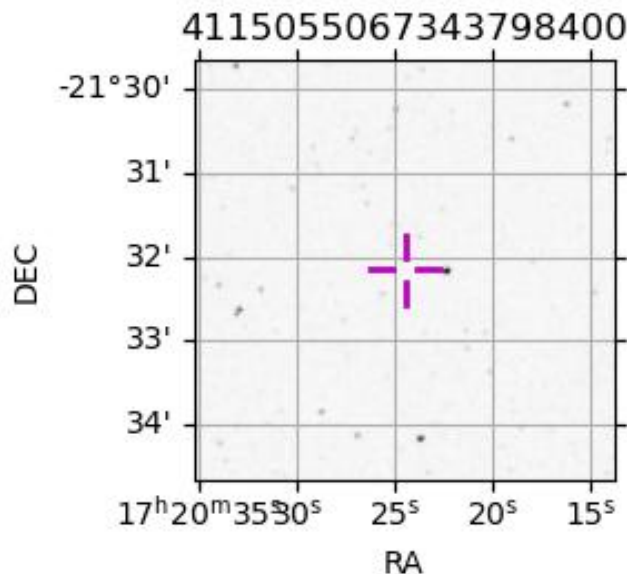
URKALLv1.spk  
 naif0012.tls  
 nep097.bsp  
 nep101.bsp  
 sat4401.bsp

Observable events with sun below -5 deg and altitude above 5 deg

Obs	Location	lat	Elon	Target	Observed Events Interval	OEcode
PIC	Pic du Midi	42.9	0.1			Pnn
PAL	Palomar Mt (200")	33.4	243.1			Pnn
PMO	Purple Mtn Obs. Nanking	32.1	118.8	+ +	MAY 20 20:05 - MAY 20 20:11	Pie
KPNO	Kitt Peak Natl Obs	32.0	248.4			Pnn
MCD	McDonald Obs. 2.7m	30.7	256.0			Pnn
TEN	Teide Obs./Tenerife	28.3	343.5			Pnn
IRTF	Mauna Kea/IRTF	19.8	204.5			Pnn
KAV	Kavalur Observatory	12.6	78.8	+ +	MAY 20 20:10 - MAY 20 20:14	Pie
RIO	Rio de Janeiro	-22.9	316.8			Pnn
ESO	European Southern Obs. (3.6m)	-29.3	289.3			Pnn
AAT	Siding Spring (AAT)	-31.3	149.1			Pnn
SAAO	So. Afr. Astro. Obs. (Sutherland)	-32.4	20.8			Pnn
MSO	Mt. Stromlo Observatory	-35.3	149.0			Pnn



2046-05-20T20:13:01.6100 cc: 17 20 24.3556 d: -21 32 09.545 C/A 0.822" PA 357.14 deg v\_sky -13.76 km/s D 09.09 AU  
 Credit: Styled after SORA/Lucky Star



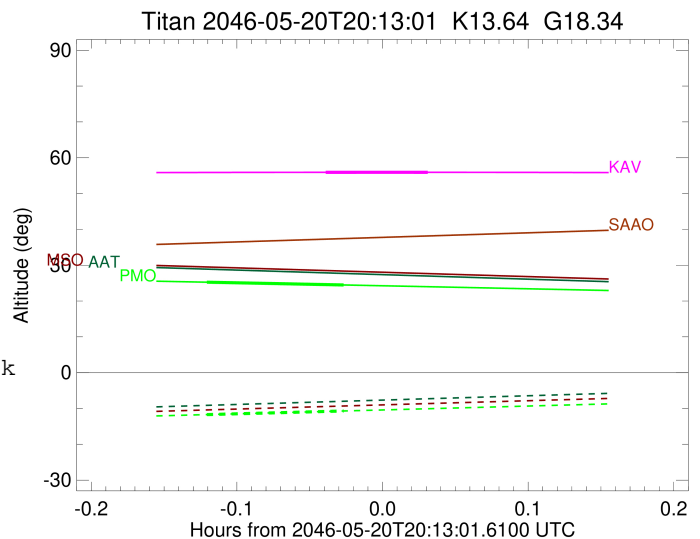
```

target                : Titan
target radius (km)   : 2575.15
C/A epoch            : 2046-05-20T20:08:36.220
Event type           : Pt
: Titan occs: topocentric, not geocentric
: Not a ringed target
Observer code        : PMO
Location             : Purple Mtn Obs. Nanking
Latitude (deg)       : 32.06667
E. Longitude (deg)  : 118.82089
Altitude (km)        : 0.364
Gaia source ID       : 4115055067343798400
2Mass ID (if available) : 17202441-2132090
ICRS Star Coord at Epoch: 17h 20m 24.35563s -21:32:09.54541s
RUWE (>1.4 is poor) : 1.01
K magnitude           : 13.641
G magnitude           : 18.335
RP magnitude          : 17.014
BP magnitude          : 20.245
DUPflag              : 0
Distance (au)         : 9.090
f0 (km)               : 0.00
g0 (km)               : 0.00
skyplane vel. (km/s) : -13.77
Sun-Target sep (deg) : 158.49
Sun-Moon sep (deg)   : 14.37
B (ring opening deg) : 26.45
PA of pole (deg)     : 4.77
Pole direction: RA (deg): 39.48270
Dec (deg): 83.42790
C/A sky separation (") : 0.139
C/A sky separation (km) : 916.5
NAIF SPICE kernels   : RAJobs_U111+rgf16.spk
URKALLv1.spk
naif0012.tls
nep097.bsp
nep101.bsp
sat4401.bsp
de440.bsp
earth_720101_070426.bpc
jup365.bsp
urall6.bsp
IAU_SATURN_for_RINGFIT.tpc
pck00010.tpc
earth_200101_990628_predict.bpc
IAU_NEPTUNE_for_RINGFIT.tpc.BECAREFUL
uranus_ringframes_rfrench20220627_v1.tf
neptune_ringframes_rfrench20220702a_v1.tf
earth_flat_IAU.spk

```

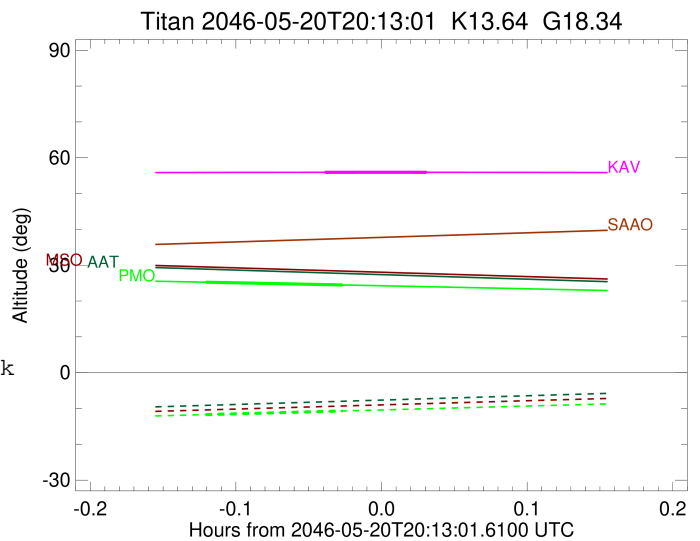
x: target alt < 5.0 deg or sun > -5.0 deg

Target	I/E	UTC	alt	alt-sun	radius	lat-geo	lat-geodetic
Titan	I	2046-05-20T20:05:45.039	25.26	-11.71	2575.1	-24.88	-24.89
Titan	E	2046-05-20T20:11:27.393	24.48	-10.69	2575.1	-12.21	-12.22



```

target                : Titan
target radius (km)   : 2575.15
C/A epoch            : 2046-05-20T20:12:47.900
Event type           : Pt
: Titan occs: topocentric, not geocentric
: Not a ringed target
Observer code        : KAV
Location             : Kavalur Observatory
Latitude (deg)       : 12.57556
E. Longitude (deg)  : 78.83167
Altitude (km)        : 0.722
Gaia source ID       : 4115055067343798400
2Mass ID (if available) : 17202441-2132090
ICRS Star Coord at Epoch: 17h 20m 24.35563s -21:32:09.54541s
RUWE (>1.4 is poor) : 1.01
K magnitude          : 13.641
G magnitude          : 18.335
RP magnitude         : 17.014
BP magnitude         : 20.245
DUPflag             : 0
Distance (au)        : 9.090
f0 (km)              : 0.00
g0 (km)              : 0.00
skyplane vel. (km/s) : -13.77
Sun-Target sep (deg) : 158.49
Sun-Moon sep (deg)  : 13.93
B (ring opening deg) : 26.45
PA of pole (deg)    : 4.77
Pole direction: RA (deg): 39.48270
Dec (deg): 83.42790
C/A sky separation (" ) : 0.279
C/A sky separation (km) : 1836.6
NAIF SPICE kernels  : RAJobs_U111+rgf16.spk
URKALLv1.spk
naif0012.tls
nep097.bsp
nep101.bsp
sat4401.bsp
de440.bsp
earth_720101_070426.bpc
jup365.bsp
urall6.bsp
IAU_SATURN_for_RINGFIT.tpc
pck00010.tpc
earth_200101_990628_predict.bpc
IAU_NEPTUNE_for_RINGFIT.tpc.BECAREFUL
uranus_ringframes_rfrench20220627_v1.tf
neptune_ringframes_rfrench20220702a_v1.tf
earth_flat_IAU.spk
    
```



x: target alt < 5.0 deg or sun > -5.0 deg

Target	I/E	UTC	alt	alt-sun	radius	lat-geo	lat-geodetic
Titan	I	2046-05-20T20:10:40.910	55.92	-50.64	2575.1	-45.67	-45.68
Titan	E	2046-05-20T20:14:54.875	55.92	-50.04	2575.1	-33.42	-33.43