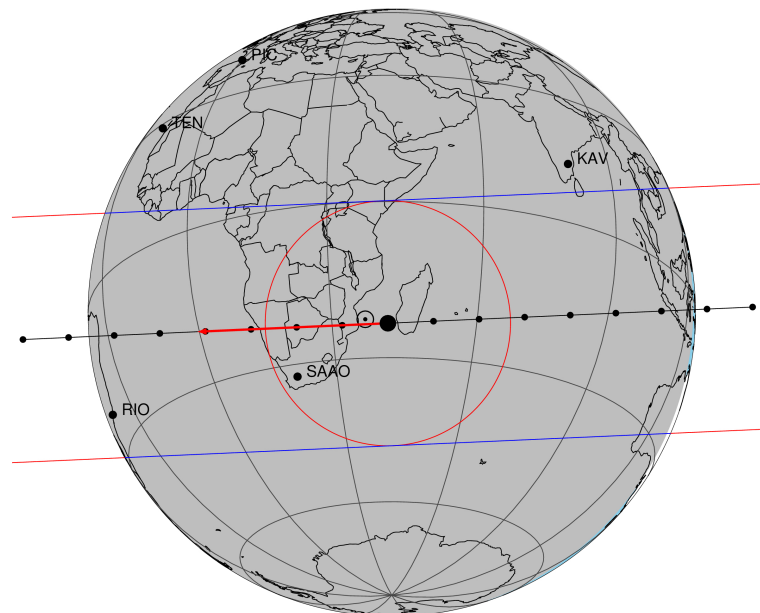


target : Titan  
 target radius (km) : 2575.15  
 C/A epoch : 2046-06-05T21:30:51.170  
 Event type : Pgt  
 : Titan occs: geocentric, topocentric  
 : Not a ringed target  
 Gaia source ID : 4115781191697268480  
 2Mass ID (if available) : 17153325-2127453

Titan 2046-06-05T21:30:51 K14.88 G18.22 dots 60.0 sec  
 Pgt

ICRS Star Coord at Epoch: 17h 15m 33.27247s -21:27:45.41415s  
 RUWE (>1.4 is poor) : 1.00  
 K magnitude : 14.877  
 G magnitude : 18.222  
 RP magnitude : 17.352  
 BP magnitude : 19.036  
 DUPflag : 0  
 Distance (au) : 9.028  
 f0 (km) : 0.00  
 g0 (km) : 0.00  
 skyplane vel. (km/s) : -15.98  
 Sun-Target sep (deg) : 174.84  
 Sun-Moon sep (deg) : 168.45  
 B (ring opening deg) : 26.47  
 PA of pole (deg) : 4.66  
 Pole direction: RA (deg): 39.48270  
 Dec (deg): 83.42790  
 C/A sky separation (") : 0.035  
 C/A sky separation (km) : 226.1  
 NAIF SPICE kernels : RAJobs\_U111+rgf16.spk

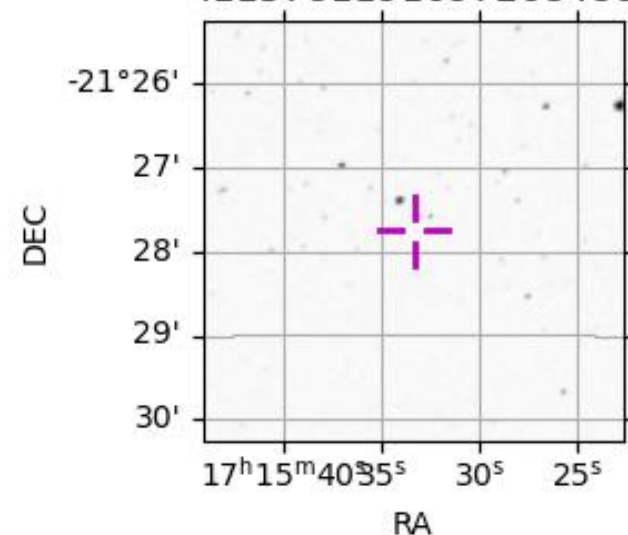


2046-06-05T21:30:51.1700 α: 17 15 33.2725 δ: -21 27 45.414 C/A 0.033" PA 177.53 deg v\_sky -15.97 km/s D 09.03 AU  
 Credit: Styled after SORA/Lucky Star

URKALLv1.spk  
 naif0012.tls  
 nep097.bsp  
 nep101.bsp  
 sat4401.bsp  
 Observable events with sun below -5 deg and altitude above 5 deg

Obs	Location	lat	Elon	Target	Observed Events Interval	OCode
PIC	Pic du Midi	42.9	0.1			Pnn
PAL	Palomar Mt (200")	33.4	243.1			Pnn
PMO	Purple Mtn Obs. Nanking	32.1	118.8			Pnn
KPNO	Kitt Peak Natl Obs	32.0	248.4			Pnn
MCD	McDonald Obs. 2.7m	30.7	256.0			Pnn
TEN	Teide Obs./Tenerife	28.3	343.5			Pnn
IRTF	Mauna Kea/IRTF	19.8	204.5			Pnn
KAV	Kavalur Observatory	12.6	78.8			Pnn
RIO	Rio de Janeiro	-22.9	316.8	+ +	JUN 05 21:34 - JUN 05 21:39	Pie
ESO	European Southern Obs. (3.6m)	-29.3	289.3			Pnn
AAT	Siding Spring (AAT)	-31.3	149.1			Pnn
SAAO	So. Afr. Astro. Obs. (Sutherland)	-32.4	20.8	+ +	JUN 05 21:30 - JUN 05 21:35	Pie
MSO	Mt. Stromlo Observatory	-35.3	149.0			Pnn

4115781191697268480



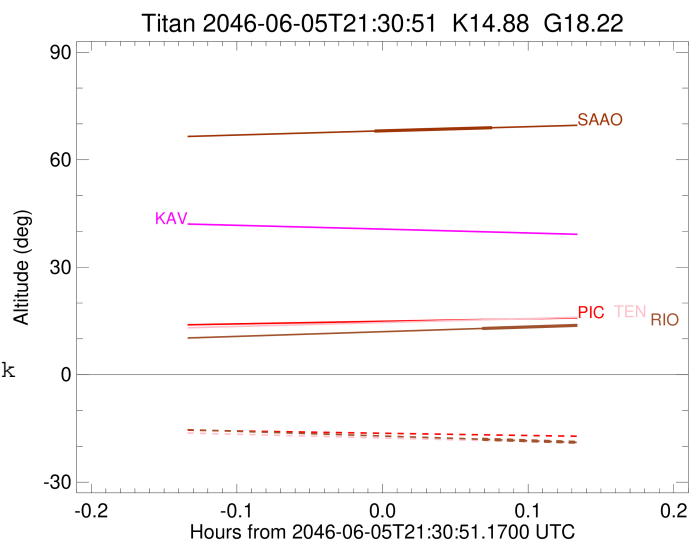
```

target                : Titan
target radius (km)   : 2575.15
C/A epoch             : 2046-06-05T21:37:04.010
Event type            : Pgt
: Titan occs: geocentric, topocentric
: Not a ringed target
Observer code         : RIO
Location              : Rio de Janeiro
Latitude (deg)        : -22.89506
E. Longitude (deg)    : 316.77708
Altitude (km)         : 0.033
Gaia source ID        : 4115781191697268480
2Mass ID (if available) : 17153325-2127453
ICRS Star Coord at Epoch: 17h 15m 33.27247s -21:27:45.41415s
RUWE (>1.4 is poor)  : 1.00
K magnitude           : 14.877
G magnitude           : 18.222
RP magnitude          : 17.352
BP magnitude          : 19.036
DUPflag              : 0
Distance (au)         : 9.028
f0 (km)               : 0.00
g0 (km)               : 0.00
skyplane vel. (km/s) : -15.98
Sun-Target sep (deg)  : 174.84
Sun-Moon sep (deg)    : 169.10
B (ring opening deg) : 26.47
PA of pole (deg)     : 4.66
Pole direction: RA (deg): 39.48270
Dec (deg): 83.42790
C/A sky separation (") : 0.237
C/A sky separation (km) : 1553.2
NAIF SPICE kernels   : RAJobs_U111+rgf16.spk
URKALLv1.spk
naif0012.tls
nep097.bsp
nep101.bsp
sat4401.bsp
de440.bsp
earth_720101_070426.bpc
jup365.bsp
urall6.bsp
IAU_SATURN_for_RINGFIT.tpc
pck00010.tpc
earth_200101_990628_predict.bpc
IAU_NEPTUNE_for_RINGFIT.tpc.BECAREFUL
uranus_ringframes_rfrench20220627_v1.tf
neptune_ringframes_rfrench20220702a_v1.tf
earth_flat_IAU.spk

```

x: target alt < 5.0 deg or sun > -5.0 deg

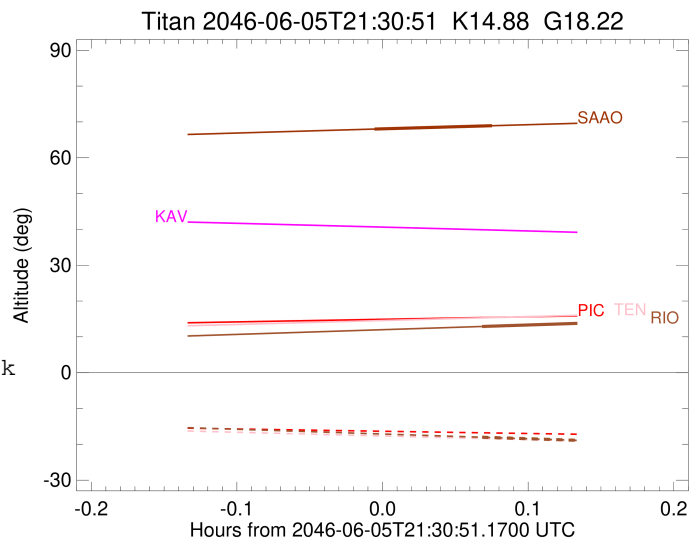
Target	I/E	UTC	alt	alt-sun	radius	lat-geo	lat-geodetic
Titan	I	2046-06-05T21:34:55.874	12.89	-18.02	2575.1	-39.15	-39.17
Titan	E	2046-06-05T21:39:12.089	13.83	-18.96	2575.1	-26.01	-26.02



```

target                : Titan
target radius (km)   : 2575.15
C/A epoch             : 2046-06-05T21:32:56.390
Event type           : Pgt
: Titan occs: geocentric, topocentric
: Not a ringed target
Observer code        : SAAO
Location             : So. Afr. Astro. Obs. (Sutherland)
Latitude (deg)       : -32.37953
E. Longitude (deg)   : 20.81070
Altitude (km)        : 1.768
Gaia source ID       : 4115781191697268480
2Mass ID (if available) : 17153325-2127453
ICRS Star Coord at Epoch: 17h 15m 33.27247s -21:27:45.41415s
RUWE (>1.4 is poor) : 1.00
K magnitude           : 14.877
G magnitude           : 18.222
RP magnitude          : 17.352
BP magnitude          : 19.036
DUPflag              : 0
Distance (au)         : 9.028
f0 (km)               : 0.00
g0 (km)               : 0.00
skyplane vel. (km/s) : -15.98
Sun-Target sep (deg) : 174.84
Sun-Moon sep (deg)   : 168.79
B (ring opening deg) : 26.47
PA of pole (deg)     : 4.66
Pole direction: RA (deg): 39.48270
Dec (deg): 83.42790
C/A sky separation ("): 0.151
C/A sky separation (km): 991.3
NAIF SPICE kernels   : RAJobs_U111+rgf16.spk
URKALLv1.spk
naif0012.tls
nep097.bsp
nep101.bsp
sat4401.bsp
de440.bsp
earth_720101_070426.bpc
jup365.bsp
urall6.bsp
IAU_SATURN_for_RINGFIT.tpc
pck00010.tpc
earth_200101_990628_predict.bpc
IAU_NEPTUNE_for_RINGFIT.tpc.BECAREFUL
uranus_ringframes_rfrench20220627_v1.tf
neptune_ringframes_rfrench20220702a_v1.tf
earth_flat_IAU.spk

```



x: target alt < 5.0 deg or sun > -5.0 deg

Target	I/E	UTC	alt	alt-sun	radius	lat-geo	lat-geodetic
Titan	I	2046-06-05T21:30:30.974	67.99	-72.75	2575.1	-26.56	-26.57
Titan	E	2046-06-05T21:35:21.779	68.93	-73.63	2575.1	-13.68	-13.68