

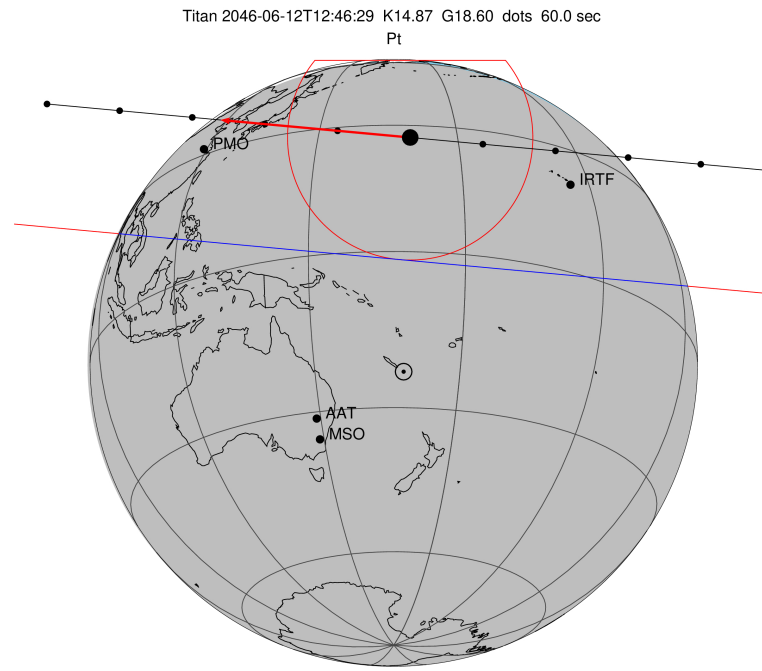
target : Titan
 target radius (km) : 2575.15
 C/A epoch : 2046-06-12T12:46:29.290
 Event type : Pt
 : Titan occs: topocentric, not geocentric
 : Not a ringed target
 Gaia source ID : 4115804040917904640
 2Mass ID (if available) : 17131386-2127592

ICRS Star Coord at Epoch: 17h 13m 13.83892s -21:27:59.74022s
 RUWE (>1.4 is poor) : 1.00
 K magnitude : 14.874
 G magnitude : 18.599
 RP magnitude : 17.579
 BP magnitude : 19.742
 DUPflag : 0
 Distance (au) : 9.012
 f0 (km) : 0.00
 g0 (km) : 0.00
 skyplane vel. (km/s) : -25.52
 Sun-Target sep (deg) : 177.50
 Sun-Moon sep (deg) : 76.44
 B (ring opening deg) : 26.52
 PA of pole (deg) : 4.60
 Pole direction: RA (deg): 39.48270
 Dec (deg): 83.42790
 C/A sky separation (") : 0.726
 C/A sky separation (km) : 4747.3
 NAIF SPICE kernels : RAJobs_U111+rgf16.spk

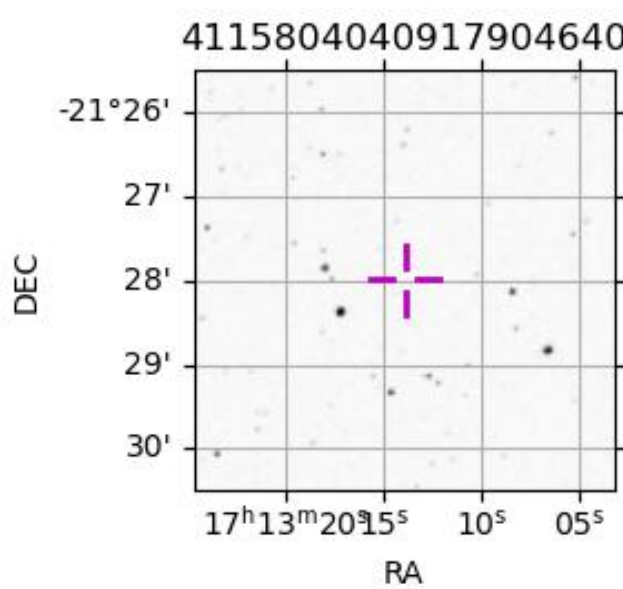
URKALLv1.spk
 naif0012.tls
 nep097.bsp
 nep101.bsp
 sat4401.bsp

Observable events with sun below -5 deg and altitude above 5 deg

Obs	Location	lat	Elon	Target	Observed Events Interval	OCode
PIC	Pic du Midi	42.9	0.1			Pnn
PAL	Palomar Mt (200")	33.4	243.1			Pnn
PMO	Purple Mtn Obs. Nanking	32.1	118.8	+ +	JUN 12 12:47 - JUN 12 12:50	Pie
KPNO	Kitt Peak Natl Obs	32.0	248.4			Pnn
MCD	McDonald Obs. 2.7m	30.7	256.0			Pnn
TEN	Teide Obs./Tenerife	28.3	343.5			Pnn
IRTF	Mauna Kea/IRTF	19.8	204.5	+ +	JUN 12 12:42 - JUN 12 12:45	Pie
KAV	Kavalur Observatory	12.6	78.8			Pnn
RIO	Rio de Janeiro	-22.9	316.8			Pnn
ESO	European Southern Obs. (3.6m)	-29.3	289.3			Pnn
AAT	Siding Spring (AAT)	-31.3	149.1			Pnn
SAAO	So. Afr. Astro. Obs. (Sutherland)	-32.4	20.8			Pnn
MSO	Mt. Stromlo Observatory	-35.3	149.0			Pnn



2046-06-12T12:46:29.2900 α: 17 13 13.8389 δ: -21 27 59.740 C/A 0.726" PA 5.27 deg v_sky -25.53 km/s D 09.01 AU
 Credit: Styled after SORA/Lucky Star



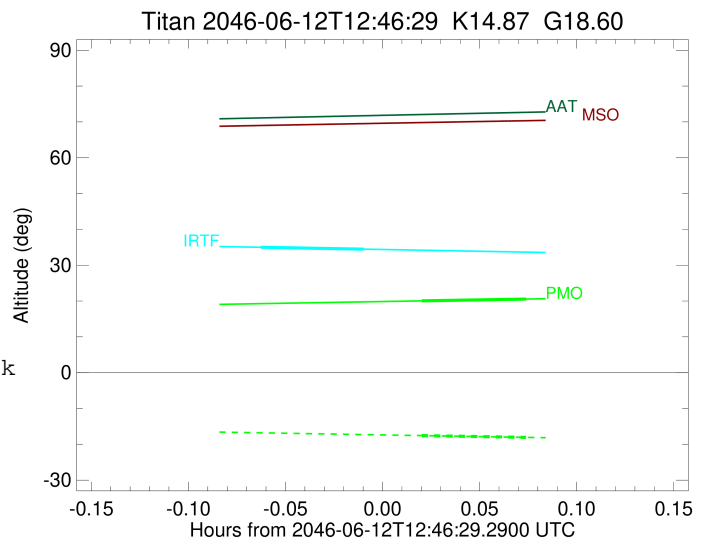
```

target                : Titan
target radius (km)   : 2575.15
C/A epoch             : 2046-06-12T12:49:18.670
Event type            : Pt
: Titan occs: topocentric, not geocentric
: Not a ringed target
Observer code         : PMO
Location              : Purple Mtn Obs. Nanking
Latitude (deg)       : 32.06667
E. Longitude (deg)   : 118.82089
Altitude (km)        : 0.364
Gaia source ID       : 4115804040917904640
2Mass ID (if available) : 17131386-2127592
ICRS Star Coord at Epoch: 17h 13m 13.83892s -21:27:59.74022s
RUWE (>1.4 is poor) : 1.00
K magnitude           : 14.874
G magnitude           : 18.599
RP magnitude          : 17.579
BP magnitude          : 19.742
DUPflag              : 0
Distance (au)        : 9.012
f0 (km)              : 0.00
g0 (km)              : 0.00
skyplane vel. (km/s) : -25.52
Sun-Target sep (deg) : 177.50
Sun-Moon sep (deg)   : 76.62
B (ring opening deg) : 26.52
PA of pole (deg)     : 4.60
Pole direction: RA (deg): 39.48270
Dec (deg): 83.42790
C/A sky separation ("): 0.094
C/A sky separation (km): 617.6
NAIF SPICE kernels   : RAJobs_U111+rgf16.spk
URKALLv1.spk
naif0012.tls
nep097.bsp
nep101.bsp
sat4401.bsp
de440.bsp
earth_720101_070426.bpc
jup365.bsp
urall6.bsp
IAU_SATURN_for_RINGFIT.tpc
pck00010.tpc
earth_200101_990628_predict.bpc
IAU_NEPTUNE_for_RINGFIT.tpc.BECAREFUL
uranus_ringframes_rfrench20220627_v1.tf
neptune_ringframes_rfrench20220702a_v1.tf
earth_flat_IAU.spk

```

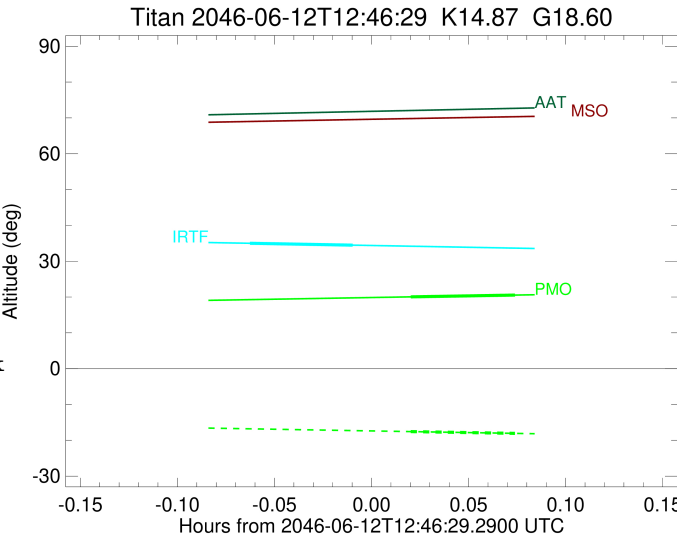
x: target alt < 5.0 deg or sun > -5.0 deg

Target	I/E	UTC	alt	alt-sun	radius	lat-geo	lat-geodetic
Titan	I	2046-06-12T12:47:41.722	20.04	-17.56	2575.1	-12.05	-12.05
Titan	E	2046-06-12T12:50:55.615	20.54	-18.06	2575.1	-12.74	-12.74



```

target                : Titan
target radius (km)   : 2575.15
C/A epoch            : 2046-06-12T12:44:18.850
Event type           : Pt
: Titan occs: topocentric, not geocentric
: Not a ringed target
Observer code        : IRTF
Location             : Mauna Kea/IRTF
Latitude (deg)       : 19.82622
E. Longitude (deg)   : 204.52800
Altitude (km)        : 4.168
Gaia source ID       : 4115804040917904640
2Mass ID (if available) : 17131386-2127592
ICRS Star Coord at Epoch: 17h 13m 13.83892s -21:27:59.74022s
RUWE (>1.4 is poor) : 1.00
K magnitude           : 14.874
G magnitude           : 18.599
RP magnitude         : 17.579
BP magnitude         : 19.742
DUPflag              : 0
Distance (au)        : 9.012
f0 (km)              : 0.00
g0 (km)              : 0.00
skyplane vel. (km/s) : -25.52
Sun-Target sep (deg) : 177.50
Sun-Moon sep (deg)   : 77.11
B (ring opening deg) : 26.52
PA of pole (deg)     : 4.60
Pole direction: RA (deg): 39.48270
Dec (deg): 83.42790
C/A sky separation ("): 0.107
C/A sky separation (km): 696.6
NAIF SPICE kernels   : RAJobs_U111+rgf16.spk
URKALLv1.spk
naif0012.tls
nep097.bsp
nep101.bsp
sat4401.bsp
de440.bsp
earth_720101_070426.bpc
jup365.bsp
urall6.bsp
IAU_SATURN_for_RINGFIT.tpc
pck00010.tpc
earth_200101_990628_predict.bpc
IAU_NEPTUNE_for_RINGFIT.tpc.BECAREFUL
uranus_ringframes_rfrench20220627_v1.tf
neptune_ringframes_rfrench20220702a_v1.tf
earth_flat_IAU.spk
    
```



```

x: target alt < 5.0 deg or sun > -5.0 deg
Target  I/E      UTC              alt  alt-sun  radius  lat-geo lat-geodetic
-----
Titan   I   2046-06-12T12:42:43.075  35.00 -35.05  2575.1  -13.28  -13.29
Titan   E   2046-06-12T12:45:54.635  34.48 -34.56  2575.1  -14.73  -14.74
    
```