

target : Titan  
 target radius (km) : 2575.15  
 C/A epoch : 2046-07-17T11:54:30.570  
 Event type : Pgt  
 : Titan occs: geocentric, topocentric  
 : Not a ringed target  
 Gaia source ID : 4127635473231799168  
 2Mass ID (if available) : 17031534-2118473

ICRS Star Coord at Epoch: 17h 03m 15.32444s -21:18:47.41625s  
 RUWE (>1.4 is poor) : 1.07  
 K magnitude : 14.664  
 G magnitude : 18.314  
 RP magnitude : 17.593  
 BP magnitude : 18.918  
 DUPflag : 0  
 Distance (au) : 9.211  
 f0 (km) : 0.00  
 g0 (km) : 0.00  
 skyplane vel. (km/s) : -14.53  
 Sun-Target sep (deg) : 142.32  
 Sun-Moon sep (deg) : 31.42  
 B (ring opening deg) : 26.55  
 PA of pole (deg) : 4.35  
 Pole direction: RA (deg): 39.48270  
 Dec (deg): 83.42790  
 C/A sky separation (") : 0.074  
 C/A sky separation (km) : 496.1  
 NAIF SPICE kernels : RAJobs\_U111+rgf16.spk  
 URKALLv1.spk  
 naif0012.tls  
 nep097.bsp  
 nep101.bsp  
 sat4401.bsp

Titan 2046-07-17T11:54:30 K14.66 G18.31 dots 60.0 sec  
 Pgt

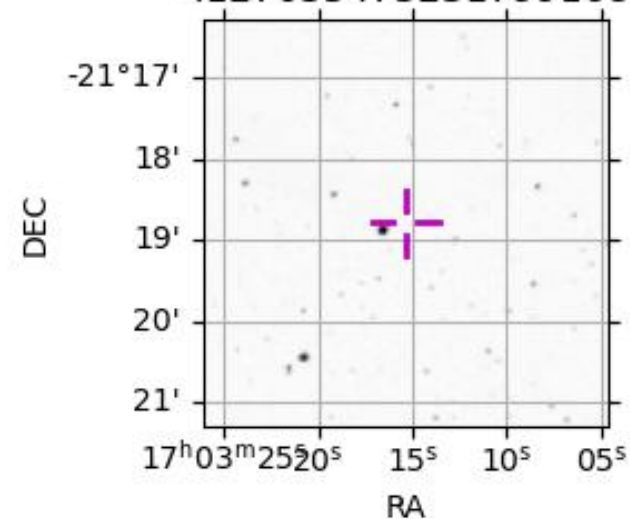


2046-07-17T11:54:30.5700 α: 17 03 15.3244 δ: -21 18 47.416 C/A 0.073" PA 11.91 deg v\_sky -14.53 km/s D 09.21 AU  
 Credit: Styled after SORA/Lucky Star

Observable events with sun below -5 deg and altitude above 5 deg

Obs	Location	lat	Elon	Target	Observed Events Interval	OEncode
PIC	Pic du Midi	42.9	0.1			Pnn
PAL	Palomar Mt (200")	33.4	243.1			Pnn
PMO	Purple Mtn Obs. Nanking	32.1	118.8			Pnn
KPNO	Kitt Peak Natl Obs	32.0	248.4			Pnn
MCD	McDonald Obs. 2.7m	30.7	256.0			Pnn
TEN	Teide Obs./Tenerife	28.3	343.5			Pnn
IRTF	Mauna Kea/IRTF	19.8	204.5			Pnn
KAV	Kavalur Observatory	12.6	78.8			Pnn
RIO	Rio de Janeiro	-22.9	316.8			Pnn
ESO	European Southern Obs. (3.6m)	-29.3	289.3			Pnn
AAT	Siding Spring (AAT)	-31.3	149.1	+ +	JUL 17 11:51 - JUL 17 11:55	Pie
SAAO	So. Afr. Astro. Obs. (Sutherland)	-32.4	20.8			Pnn
MSO	Mt. Stromlo Observatory	-35.3	149.0	+ +	JUL 17 11:51 - JUL 17 11:55	Pie

4127635473231799168



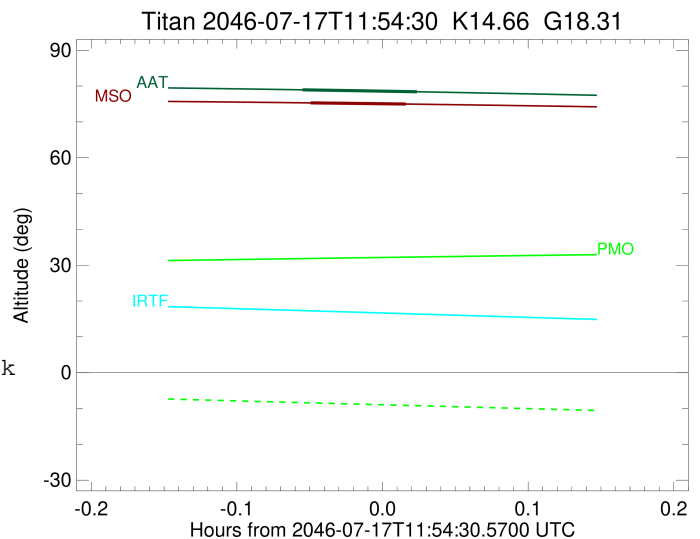
```

target                : Titan
target radius (km)   : 2575.15
C/A epoch             : 2046-07-17T11:53:34.550
Event type            : Pgt
: Titan occs: geocentric, topocentric
: Not a ringed target
Observer code         : AAT
Location              : Siding Spring (AAT)
Latitude (deg)        : -31.27703
E. Longitude (deg)    : 149.06608
Altitude (km)         : 1.164
Gaia source ID        : 4127635473231799168
2Mass ID (if available) : 17031534-2118473
ICRS Star Coord at Epoch: 17h 03m 15.32444s -21:18:47.41625s
RUWE (>1.4 is poor)  : 1.07
K magnitude           : 14.664
G magnitude           : 18.314
RP magnitude          : 17.593
BP magnitude          : 18.918
DUPflag              : 0
Distance (au)         : 9.211
f0 (km)               : 0.00
g0 (km)               : 0.00
skyplane vel. (km/s) : -14.53
Sun-Target sep (deg)  : 142.32
Sun-Moon sep (deg)    : 31.80
B (ring opening deg) : 26.55
PA of pole (deg)      : 4.35
Pole direction: RA (deg): 39.48270
Dec (deg): 83.42790
C/A sky separation (") : 0.216
C/A sky separation (km) : 1440.0
NAIF SPICE kernels   : RAJobs_U111+rgf16.spk
URKALLv1.spk
naif0012.tls
nep097.bsp
nep101.bsp
sat4401.bsp
de440.bsp
earth_720101_070426.bpc
jup365.bsp
urall6.bsp
IAU_SATURN_for_RINGFIT.tpc
pck00010.tpc
earth_200101_990628_predict.bpc
IAU_NEPTUNE_for_RINGFIT.tpc.BECAREFUL
uranus_ringframes_rfrench20220627_v1.tf
neptune_ringframes_rfrench20220702a_v1.tf
earth_flat_IAU.spk

```

x: target alt < 5.0 deg or sun > -5.0 deg

Target	I/E	UTC	alt	alt-sun	radius	lat-geo	lat-geodetic
Titan	I	2046-07-17T11:51:11.532	78.95	-57.45	2575.1	-23.70	-23.71
Titan	E	2046-07-17T11:55:57.596	78.40	-58.45	2575.1	-36.19	-36.20



```

target                : Titan
target radius (km)   : 2575.15
C/A epoch             : 2046-07-17T11:53:30.900
Event type            : Pgt
: Titan occs: geocentric, topocentric
: Not a ringed target
Observer code         : MSO
Location              : Mt. Stromlo Observatory
Latitude (deg)       : -35.32000
E. Longitude (deg)   : 149.00833
Altitude (km)        : 0.770
Gaia source ID       : 4127635473231799168
2Mass ID (if available) : 17031534-2118473
ICRS Star Coord at Epoch: 17h 03m 15.32444s -21:18:47.41625s
RUWE (>1.4 is poor) : 1.07
K magnitude           : 14.664
G magnitude           : 18.314
RP magnitude          : 17.593
BP magnitude          : 18.918
DUPflag              : 0
Distance (au)        : 9.211
f0 (km)              : 0.00
g0 (km)              : 0.00
skyplane vel. (km/s) : -14.53
Sun-Target sep (deg) : 142.32
Sun-Moon sep (deg)   : 31.79
B (ring opening deg) : 26.55
PA of pole (deg)     : 4.35
Pole direction: RA (deg): 39.48270
Dec (deg): 83.42790
C/A sky separation (") : 0.281
C/A sky separation (km) : 1875.7
NAIF SPICE kernels   : RAJobs_U111+rgf16.spk
URKALLv1.spk
naif0012.tls
nep097.bsp
nep101.bsp
sat4401.bsp
de440.bsp
earth_720101_070426.bpc
jup365.bsp
urall6.bsp
IAU_SATURN_for_RINGFIT.tpc
pck00010.tpc
earth_200101_990628_predict.bpc
IAU_NEPTUNE_for_RINGFIT.tpc.BECAREFUL
uranus_ringframes_rfrench20220627_v1.tf
neptune_ringframes_rfrench20220702a_v1.tf
earth_flat_IAU.spk

```

x: target alt < 5.0 deg or sun > -5.0 deg

Target	I/E	UTC	alt	alt-sun	radius	lat-geo	lat-geodetic
Titan	I	2046-07-17T11:51:32.565	75.30	-56.60	2575.1	-34.63	-34.65
Titan	E	2046-07-17T11:55:29.252	74.97	-57.38	2575.1	-46.41	-46.43

