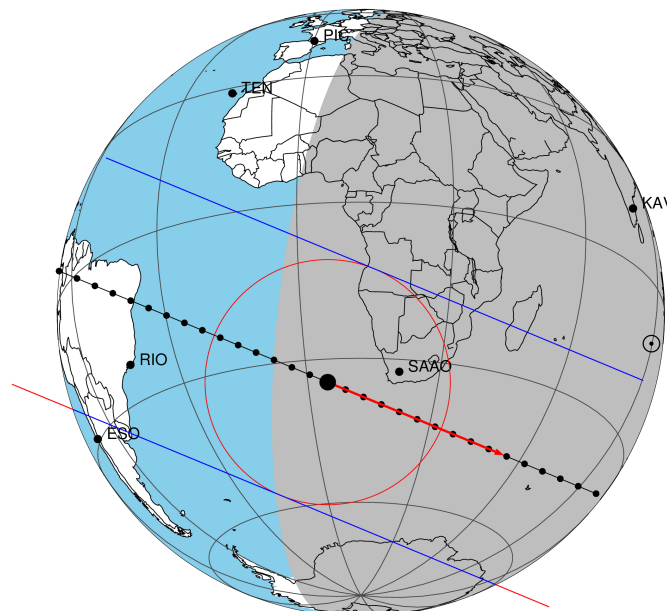


target : Titan
 target radius (km) : 2575.15
 C/A epoch : 2046-08-23T18:04:48.890
 Event type : Pgt
 : Titan occs: geocentric, topocentric
 : Not a ringed target
 Gaia source ID : 4126344547812537344
 2Mass ID (if available) : 16594138-2119334

ICRS Star Coord at Epoch: 16h 59m 41.38380s -21:19:33.36055s
 RUWE (>1.4 is poor) : 0.98
 K magnitude : 14.707
 G magnitude : 17.747
 RP magnitude : 17.088
 BP magnitude : 18.260
 DUPflag : 0
 Distance (au) : 9.722
 f0 (km) : 0.00
 g0 (km) : 0.00
 skyplane vel. (km/s) : 6.78
 Sun-Target sep (deg) : 105.83
 Sun-Moon sep (deg) : 151.83
 B (ring opening deg) : 26.62
 PA of pole (deg) : 4.26
 Pole direction: RA (deg): 39.48270
 Dec (deg): 83.42790
 C/A sky separation (") : 0.225
 C/A sky separation (km) : 1587.1
 NAIF SPICE kernels : RAJobs_U111+rgf16.spk

Titan 2046-08-23T18:04:48 K14.71 G17.75 dots 60.0 sec
 Pgt



2046-08-23T18:04:48.8900 ex: 16 59 41.38388 s: -21 19 33.361 C/A 0.229" PA 202.53 deg v_sky + 6.78 km/s D 09.72 AU

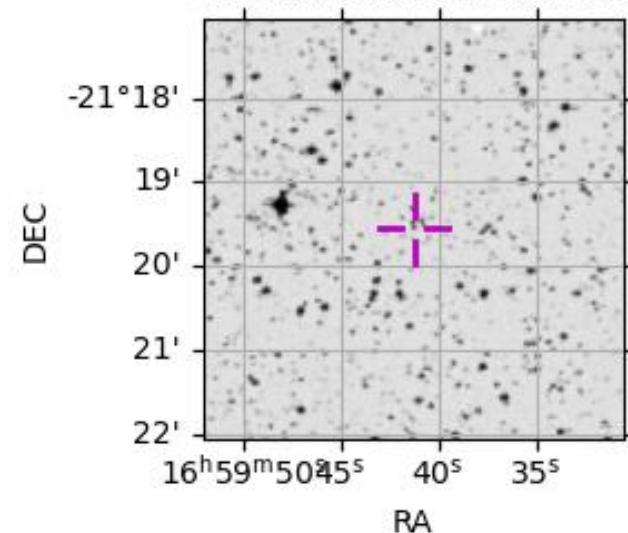
Credit: Styled after SORA/Lucky Star

URKALLv1.spk
 naif0012.tls
 nep097.bsp
 nep101.bsp
 sat4401.bsp

Observable events with sun below -5 deg and altitude above 5 deg

Obs	Location	lat	Elon	Target	Observed Events Interval	OCode
PIC	Pic du Midi	42.9	0.1			Pnn
PAL	Palomar Mt (200")	33.4	243.1			Pnn
PMO	Purple Mtn Obs. Nanking	32.1	118.8			Pnn
KPNO	Kitt Peak Natl Obs	32.0	248.4			Pnn
MCD	McDonald Obs. 2.7m	30.7	256.0			Pnn
TEN	Teide Obs./Tenerife	28.3	343.5			Pnn
IRTF	Mauna Kea/IRTF	19.8	204.5			Pnn
KAV	Kavalur Observatory	12.6	78.8			Pnn
RIO	Rio de Janeiro	-22.9	316.8			Pnn
ESO	European Southern Obs. (3.6m)	-29.3	289.3			Pnn
AAT	Siding Spring (AAT)	-31.3	149.1			Pnn
SAAO	So. Afr. Astro. Obs. (Sutherland)	-32.4	20.8	+ +	AUG 23 18:01 - AUG 23 18:14	Pie
MSO	Mt. Stromlo Observatory	-35.3	149.0			Pnn

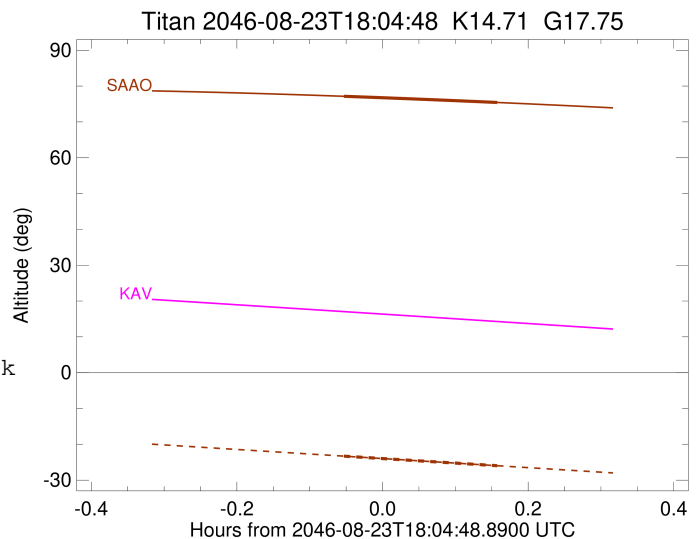
4126344547812537344



```

target                : Titan
target radius (km)   : 2575.15
C/A epoch            : 2046-08-23T18:07:55.020
Event type           : Pgt
: Titan occs: geocentric, topocentric
: Not a ringed target
Observer code        : SAAO
Location             : So. Afr. Astro. Obs. (Sutherland)
Latitude (deg)       : -32.37953
E. Longitude (deg)   : 20.81070
Altitude (km)        : 1.768
Gaia source ID       : 4126344547812537344
2Mass ID (if available) : 16594138-2119334
ICRS Star Coord at Epoch: 16h 59m 41.38380s -21:19:33.36055s
RUWE (>1.4 is poor) : 0.98
K magnitude           : 14.707
G magnitude           : 17.747
RP magnitude          : 17.088
BP magnitude          : 18.260
DUPflag              : 0
Distance (au)         : 9.722
f0 (km)               : 0.00
g0 (km)               : 0.00
skyplane vel. (km/s) : 6.78
Sun-Target sep (deg) : 105.83
Sun-Moon sep (deg)   : 152.32
B (ring opening deg) : 26.62
PA of pole (deg)     : 4.26
Pole direction: RA (deg): 39.48270
Dec (deg): 83.42790
C/A sky separation (") : 0.112
C/A sky separation (km) : 790.0
NAIF SPICE kernels   : RAJobs_U111+rgf16.spk
URKALLv1.spk
naif0012.tls
nep097.bsp
nep101.bsp
sat4401.bsp
de440.bsp
earth_720101_070426.bpc
jup365.bsp
urall6.bsp
IAU_SATURN_for_RINGFIT.tpc
pck00010.tpc
earth_200101_990628_predict.bpc
IAU_NEPTUNE_for_RINGFIT.tpc.BECAREFUL
uranus_ringframes_rfrench20220627_v1.tf
neptune_ringframes_rfrench20220702a_v1.tf
earth_flat_IAU.spk

```



x: target alt < 5.0 deg or sun > -5.0 deg

Target	I/E	UTC	alt	alt-sun	radius	lat-geo	lat-geodetic
Titan	I	2046-08-23T18:01:32.938	77.15	-23.28	2575.2	-1.38	-1.38
Titan	E	2046-08-23T18:14:17.120	75.42	-25.97	2575.1	32.78	32.79