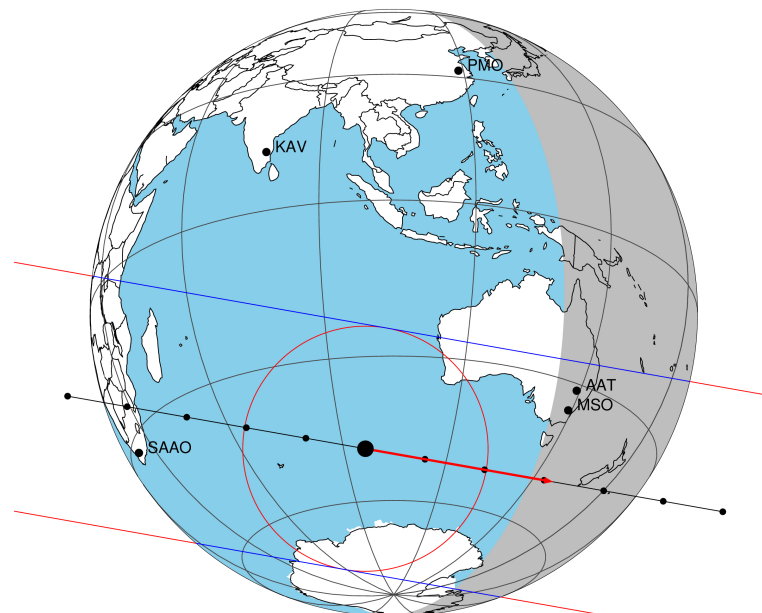


target : Titan
 target radius (km) : 2575.15
 C/A epoch : 2046-10-16T08:35:32.340
 Event type : Pt
 : Titan occs: topocentric, not geocentric
 : Not a ringed target
 Gaia source ID : 4115596856021116416
 2Mass ID (if available) : 17100797-2145402

ICRS Star Coord at Epoch: 17h 10m 07.96407s -21:45:40.82629s
 RUWE (>1.4 is poor) : 0.96
 K magnitude : 12.720
 G magnitude : 15.905
 RP magnitude : 14.934
 BP magnitude : 16.624
 DUPflag : 0
 Distance (au) : 10.558
 f0 (km) : 0.00
 g0 (km) : 0.00
 skyplane vel. (km/s) : 21.17
 Sun-Target sep (deg) : 55.94
 Sun-Moon sep (deg) : 138.71
 B (ring opening deg) : 26.87
 PA of pole (deg) : 4.54
 Pole direction: RA (deg): 39.48270
 Dec (deg): 83.42790
 C/A sky separation (") : 0.380
 C/A sky separation (km) : 2907.9
 NAIF SPICE kernels : RAJobs_U111+rgf16.spk
 URKALLv1.spk
 naif0012.tls
 nep097.bsp
 nep101.bsp
 sat4401.bsp

Titan 2046-10-16T08:35:32 K12.72 G15.91 dots 60.0 sec
 Pt

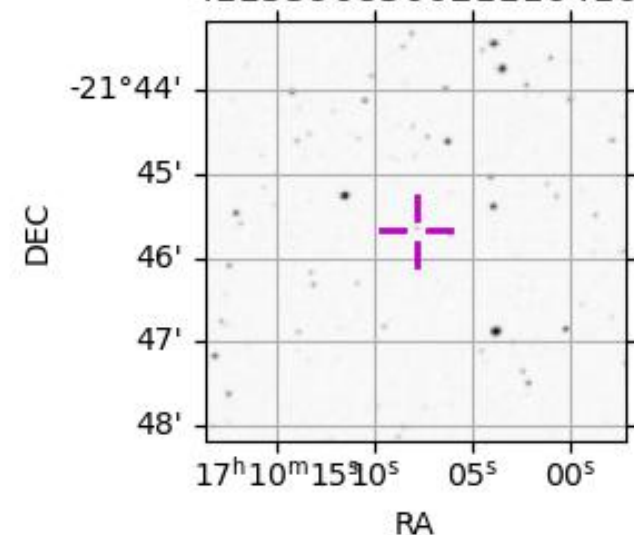


2046-10-16T08:35:32.3400 α: 17 10 07.9641 δ: -21 45 40.826 C/A 0.381" PA 190.02 deg v_sky +21.17 km/s D 10.56 AU
 Credit: Styled after SORA/Lucky Star

Observable events with sun below -5 deg and altitude above 5 deg

Obs	Location	lat	Elon	Target	Observed Events Interval	OEcode
PIC	Pic du Midi	42.9	0.1			Pnn
PAL	Palomar Mt (200")	33.4	243.1			Pnn
PMO	Purple Mtn Obs. Nanking	32.1	118.8			Pnn
KPNO	Kitt Peak Natl Obs	32.0	248.4			Pnn
MCD	McDonald Obs. 2.7m	30.7	256.0			Pnn
TEN	Teide Obs./Tenerife	28.3	343.5			Pnn
IRTF	Mauna Kea/IRTF	19.8	204.5			Pnn
KAV	Kavalur Observatory	12.6	78.8			Pnn
RIO	Rio de Janeiro	-22.9	316.8			Pnn
ESO	European Southern Obs. (3.6m)	-29.3	289.3			Pnn
AAT	Siding Spring (AAT)	-31.3	149.1	+ +	OCT 16 08:37 - OCT 16 08:40	Pie
SAAO	So. Afr. Astro. Obs. (Sutherland)	-32.4	20.8			Pnn
MSO	Mt. Stromlo Observatory	-35.3	149.0	+ +	OCT 16 08:40 - OCT 16 08:40	Pne

4115596856021116416



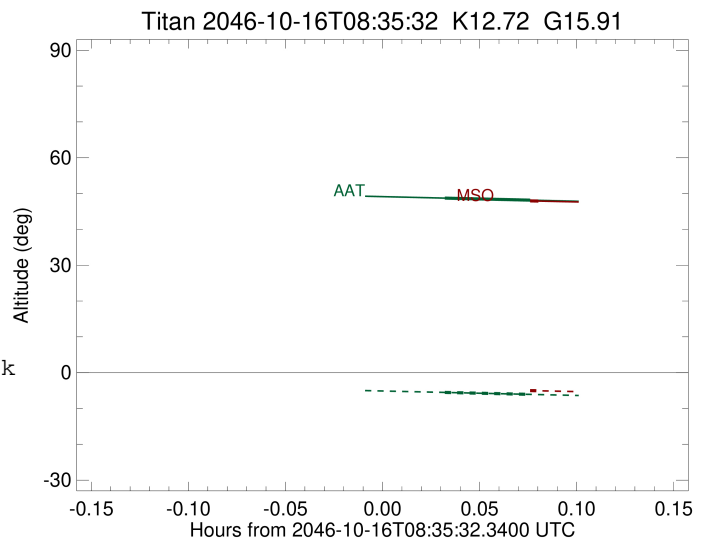
```

target                : Titan
target radius (km)   : 2575.15
C/A epoch            : 2046-10-16T08:38:47.230
Event type           : Pt
: Titan occs: topocentric, not geocentric
: Not a ringed target
Observer code        : AAT
Location             : Siding Spring (AAT)
Latitude (deg)       : -31.27703
E. Longitude (deg)   : 149.06608
Altitude (km)        : 1.164
Gaia source ID       : 4115596856021116416
2Mass ID (if available) : 17100797-2145402
ICRS Star Coord at Epoch: 17h 10m 07.96407s -21:45:40.82629s
RUWE (>1.4 is poor) : 0.96
K magnitude           : 12.720
G magnitude           : 15.905
RP magnitude          : 14.934
BP magnitude          : 16.624
DUPflag              : 0
Distance (au)         : 10.558
f0 (km)               : 0.00
g0 (km)               : 0.00
skyplane vel. (km/s) : 21.17
Sun-Target sep (deg) : 55.94
Sun-Moon sep (deg)   : 139.56
B (ring opening deg) : 26.87
PA of pole (deg)     : 4.54
Pole direction: RA (deg): 39.48270
Dec (deg): 83.42790
C/A sky separation (") : 0.255
C/A sky separation (km) : 1953.0
NAIF SPICE kernels   : RAJobs_U111+rgf16.spk
URKALLv1.spk
naif0012.tls
nep097.bsp
nep101.bsp
sat4401.bsp
de440.bsp
earth_720101_070426.bpc
jup365.bsp
urall6.bsp
IAU_SATURN_for_RINGFIT.tpc
pck00010.tpc
earth_200101_990628_predict.bpc
IAU_NEPTUNE_for_RINGFIT.tpc.BECAREFUL
uranus_ringframes_rfrench20220627_v1.tf
neptune_ringframes_rfrench20220702a_v1.tf
earth_flat_IAU.spk

```

x: target alt < 5.0 deg or sun > -5.0 deg

Target	I/E	UTC	alt	alt-sun	radius	lat-geo	lat-geodetic
Titan	I	2046-10-16T08:37:26.815	48.72	-5.51	2575.1	38.30	38.31
Titan	E	2046-10-16T08:40:07.646	48.15	-6.07	2575.1	46.67	46.69



```

target                : Titan
target radius (km)   : 2575.15
C/A epoch            : 2046-10-16T08:38:42.000
Event type           : Pt
: Titan occs: topocentric, not geocentric
: Not a ringed target
Observer code        : MSO
Location             : Mt. Stromlo Observatory
Latitude (deg)       : -35.32000
E. Longitude (deg)  : 149.00833
Altitude (km)        : 0.770
Gaia source ID       : 4115596856021116416
2Mass ID (if available) : 17100797-2145402
ICRS Star Coord at Epoch: 17h 10m 07.96407s -21:45:40.82629s
RUWE (>1.4 is poor) : 0.96
K magnitude           : 12.720
G magnitude           : 15.905
RP magnitude         : 14.934
BP magnitude         : 16.624
DUPflag              : 0
Distance (au)        : 10.558
f0 (km)              : 0.00
g0 (km)              : 0.00
skyplane vel. (km/s) : 21.17
Sun-Target sep (deg) : 55.94
Sun-Moon sep (deg)  : 139.53
B (ring opening deg) : 26.87
PA of pole (deg)    : 4.54
Pole direction: RA (deg): 39.48270
Dec (deg): 83.42790
C/A sky separation (") : 0.198
C/A sky separation (km) : 1518.4
NAIF SPICE kernels   : RAJobs_U111+rgf16.spk
URKALLv1.spk
naif0012.tls
nep097.bsp
nep101.bsp
sat4401.bsp
de440.bsp
earth_720101_070426.bpc
jup365.bsp
urall6.bsp
IAU_SATURN_for_RINGFIT.tpc
pck00010.tpc
earth_200101_990628_predict.bpc
IAU_NEPTUNE_for_RINGFIT.tpc.BECAREFUL
uranus_ringframes_rfrench20220627_v1.tf
neptune_ringframes_rfrench20220702a_v1.tf
earth_flat_IAU.spk

```

x: target alt < 5.0 deg or sun > -5.0 deg

Target	I/E	UTC	alt	alt-sun	radius	lat-geo	lat-geodetic
Titan	I	2046-10-16T08:37:02.413	48.57	-4.40x	2575.1	27.18	27.19
Titan	E	2046-10-16T08:40:21.592	47.90	-5.05	2575.1	36.19	36.21

