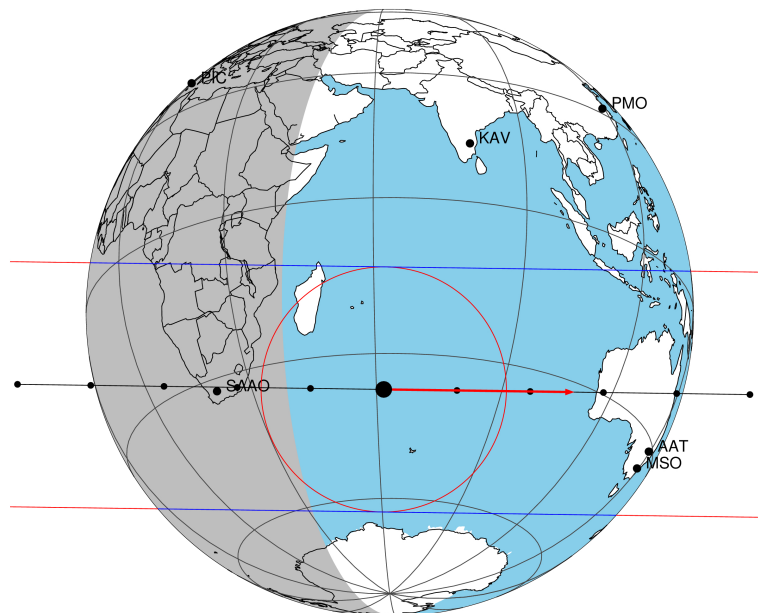


target : Titan
 target radius (km) : 2575.15
 C/A epoch : 2047-03-03T03:17:58.740
 Event type : Pgt
 : Titan occs: geocentric, topocentric
 : Not a ringed target
 Gaia source ID : 4066741736147948416
 2Mass ID (if available) : 18111059-2219414

ICRS Star Coord at Epoch: 18h 11m 10.59696s -22:19:41.26552s
 RUWE (>1.4 is poor) : 1.02
 K magnitude : 13.475
 G magnitude : 17.281
 RP magnitude : 16.358
 BP magnitude : 18.012
 DUPflag : 0
 Distance (au) : 10.361
 f0 (km) : 0.00
 g0 (km) : 0.00
 skyplane vel. (km/s) : 25.63
 Sun-Target sep (deg) : 69.22
 Sun-Moon sep (deg) : 138.77
 B (ring opening deg) : 26.15
 PA of pole (deg) : 5.87
 Pole direction: RA (deg): 39.48270
 Dec (deg): 83.42790
 C/A sky separation (") : 0.214
 C/A sky separation (km) : 1608.2
 NAIF SPICE kernels : RAJobs_U111+rgf16.spk
 URKALLv1.spk
 naif0012.tls
 nep097.bsp
 nep101.bsp
 sat4401.bsp

Titan 2047-03-03T03:17:58 K13.47 G17.28 dots 60.0 sec
 Pgt

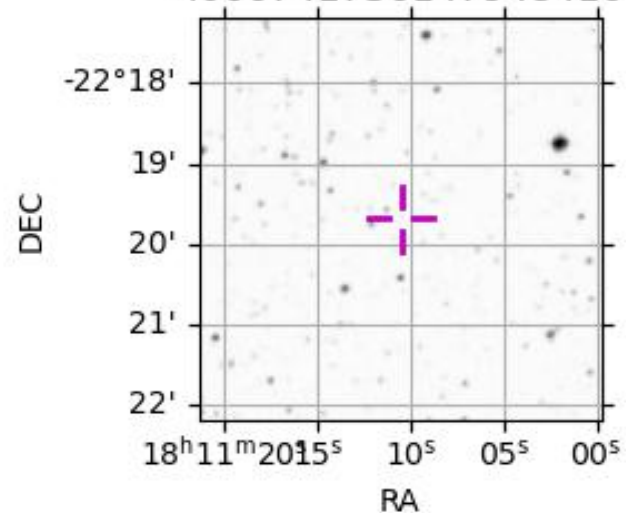


2047-03-03T03:17:58.7400 α: 18 11 10.5970 δ: -22 19 41.266 C/A 0.214" PA 180.82 deg v_sky +25.63 km/s D 10.36 AU
 Credit: Styled after SORA/Lucky Star

Observable events with sun below -5 deg and altitude above 5 deg

Obs	Location	lat	Elon	Target	Observed Events Interval	OEncode
PIC	Pic du Midi	42.9	0.1			Pnn
PAL	Palomar Mt (200")	33.4	243.1			Pnn
PMO	Purple Mtn Obs. Nanking	32.1	118.8			Pnn
KPNO	Kitt Peak Natl Obs	32.0	248.4			Pnn
MCD	McDonald Obs. 2.7m	30.7	256.0			Pnn
TEN	Teide Obs./Tenerife	28.3	343.5			Pnn
IRTF	Mauna Kea/IRTF	19.8	204.5			Pnn
KAV	Kavalur Observatory	12.6	78.8			Pnn
RIO	Rio de Janeiro	-22.9	316.8			Pnn
ESO	European Southern Obs. (3.6m)	-29.3	289.3			Pnn
AAT	Siding Spring (AAT)	-31.3	149.1			Pnn
SAAO	So. Afr. Astro. Obs. (Sutherland)	-32.4	20.8	+ +	MAR 03 03:13 - MAR 03 03:17	Pie
MSO	Mt. Stromlo Observatory	-35.3	149.0			Pnn

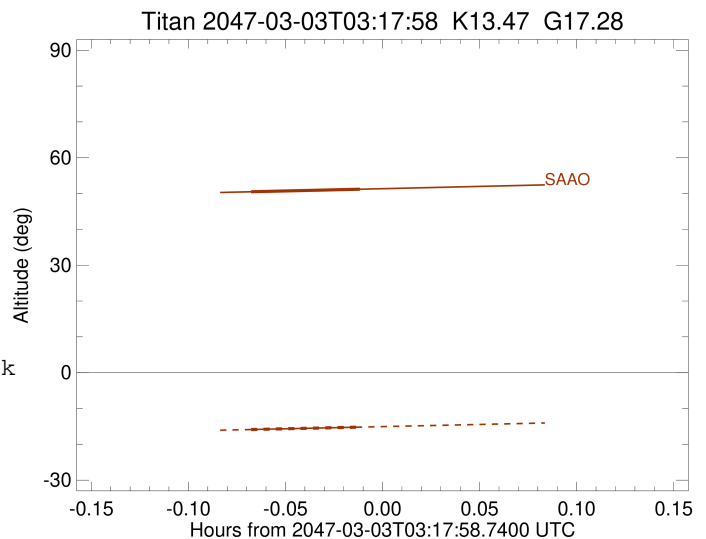
4066741736147948416



```

target                : Titan
target radius (km)   : 2575.15
C/A epoch             : 2047-03-03T03:15:36.020
Event type            : Pgt
: Titan occs: geocentric, topocentric
: Not a ringed target
Observer code         : SAAO
Location              : So. Afr. Astro. Obs. (Sutherland)
Latitude (deg)        : -32.37953
E. Longitude (deg)    : 20.81070
Altitude (km)         : 1.768
Gaia source ID        : 4066741736147948416
2Mass ID (if available) : 18111059-2219414
ICRS Star Coord at Epoch: 18h 11m 10.59696s -22:19:41.26552s
RUWE (>1.4 is poor)  : 1.02
K magnitude           : 13.475
G magnitude           : 17.281
RP magnitude          : 16.358
BP magnitude          : 18.012
DUPflag              : 0
Distance (au)         : 10.361
f0 (km)               : 0.00
g0 (km)               : 0.00
skyplane vel. (km/s) : 25.63
Sun-Target sep (deg)  : 69.22
Sun-Moon sep (deg)    : 138.83
B (ring opening deg) : 26.15
PA of pole (deg)      : 5.87
Pole direction: RA (deg): 39.48270
Dec (deg): 83.42790
C/A sky separation (") : 0.009
C/A sky separation (km) : 68.1
NAIF SPICE kernels    : RAJobs_U111+rgf16.spk
URKALLv1.spk
naif0012.tls
nep097.bsp
nep101.bsp
sat4401.bsp
de440.bsp
earth_720101_070426.bpc
jup365.bsp
urall6.bsp
IAU_SATURN_for_RINGFIT.tpc
pck00010.tpc
earth_200101_990628_predict.bpc
IAU_NEPTUNE_for_RINGFIT.tpc.BECAREFUL
uranus_ringframes_rfrench20220627_v1.tf
neptune_ringframes_rfrench20220702a_v1.tf
earth_flat_IAU.spk

```



x: target alt < 5.0 deg or sun > -5.0 deg

Target	I/E	UTC	alt	alt-sun	radius	lat-geo	lat-geodetic
Titan	I	2047-03-03T03:13:54.462	50.49	-15.87	2575.1	2.98	2.98
Titan	E	2047-03-03T03:17:17.585	51.21	-15.20	2575.1	-5.70	-5.70