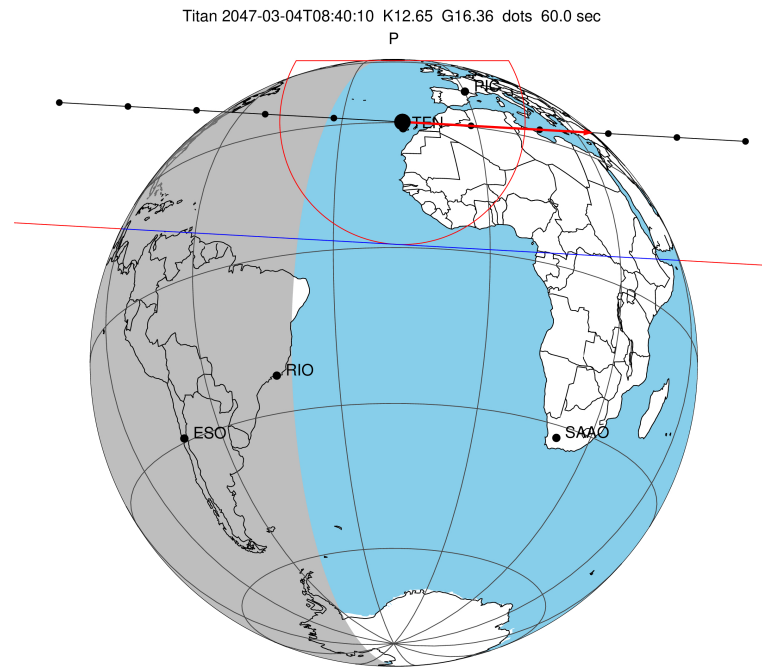


target : Titan  
 target radius (km) : 2575.15  
 C/A epoch : 2047-03-04T08:40:10.690  
 Event type : P  
 : Titan occs: not geocentric or topocentric  
 : Not a ringed target  
 Gaia source ID : 4066730126923494272  
 2Mass ID (if available) : 18113591-2219549

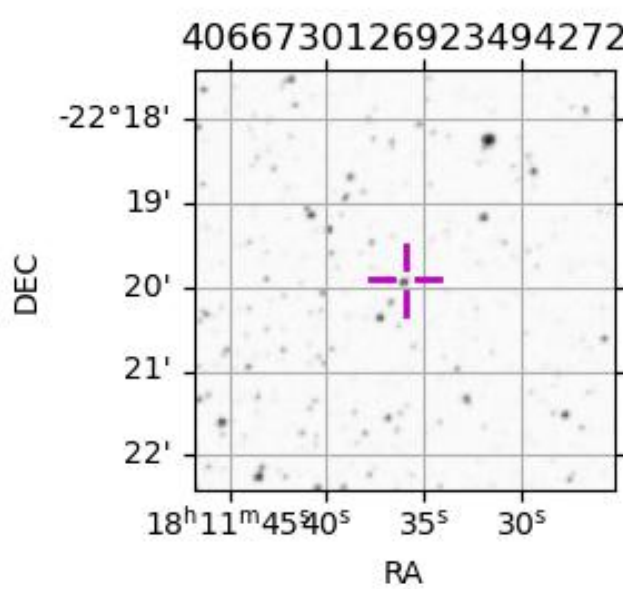
ICRS Star Coord at Epoch: 18h 11m 35.89712s -22:19:54.61367s  
 RUWE (>1.4 is poor) : 1.10  
 K magnitude : 12.654  
 G magnitude : 16.359  
 RP magnitude : 15.594  
 BP magnitude : 16.830  
 DUPflag : 0  
 Distance (au) : 10.340  
 f0 (km) : 0.00  
 g0 (km) : 0.00  
 skyplane vel. (km/s) : 24.05  
 Sun-Target sep (deg) : 70.35  
 Sun-Moon sep (deg) : 153.30  
 B (ring opening deg) : 26.14  
 PA of pole (deg) : 5.88  
 Pole direction: RA (deg): 39.48270  
 Dec (deg): 83.42790  
 C/A sky separation (") : 0.676  
 C/A sky separation (km) : 5070.6  
 NAIF SPICE kernels : RAJobs\_U111+rgf16.spk  
 URKALLv1.spk  
 naif0012.tls  
 nep097.bsp  
 nep101.bsp  
 sat4401.bsp

Observable events with sun below -5 deg and altitude above 5 deg

Obs	Location	lat	Elon	Target	Observed Events Interval	OCode
PIC	Pic du Midi	42.9	0.1			Pnn
PAL	Palomar Mt (200")	33.4	243.1			Pnn
PMO	Purple Mtn Obs. Nanking	32.1	118.8			Pnn
KPNO	Kitt Peak Natl Obs	32.0	248.4			Pnn
MCD	McDonald Obs. 2.7m	30.7	256.0			Pnn
TEN	Teide Obs./Tenerife	28.3	343.5			Pnn
IRTF	Mauna Kea/IRTF	19.8	204.5			Pnn
KAV	Kavalur Observatory	12.6	78.8			Pnn
RIO	Rio de Janeiro	-22.9	316.8			Pnn
ESO	European Southern Obs. (3.6m)	-29.3	289.3			Pnn
AAT	Siding Spring (AAT)	-31.3	149.1			Pnn
SAAO	So. Afr. Astro. Obs. (Sutherland)	-32.4	20.8			Pnn
MSO	Mt. Stromlo Observatory	-35.3	149.0			Pnn



2047-03-04T08:40:10.6900 α: 18 11 35.8971 δ: -22 19 54.614 C/A 0.675" PA 3.25 deg v\_sky +24.05 km/s D 10.34 AU  
 Credit: Styled after SORA/Lucky Star



4066730126923494272