

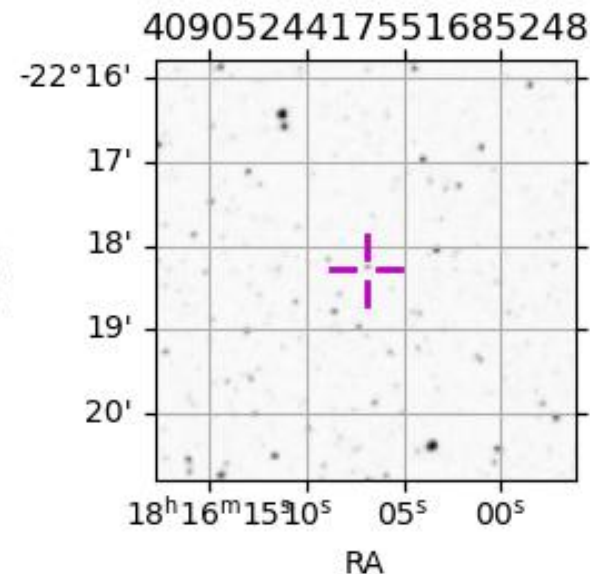
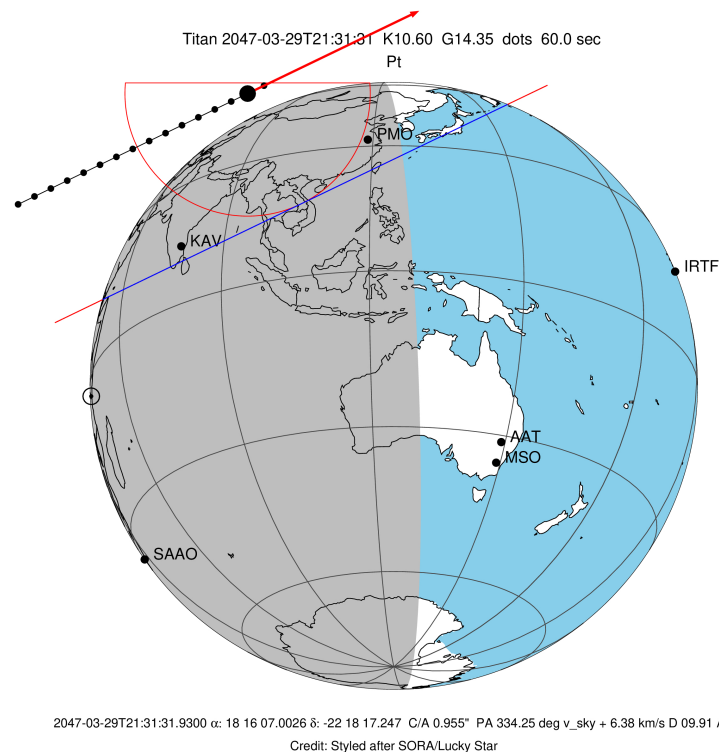
target : Titan
 target radius (km) : 2575.15
 C/A epoch : 2047-03-29T21:31:31.930
 Event type : Pt
 : Titan occs: topocentric, not geocentric
 : Not a ringed target
 Gaia source ID : 4090524417551685248
 2Mass ID (if available) : 18160699-2218173

ICRS Star Coord at Epoch: 18h 16m 07.00264s -22:18:17.24675s
 RUWE (>1.4 is poor) : 0.88
 K magnitude : 10.597
 G magnitude : 14.347
 RP magnitude : 13.316
 BP magnitude : 15.457
 DUPflag : 0
 Distance (au) : 9.912
 f0 (km) : 0.00
 g0 (km) : 0.00
 skyplane vel. (km/s) : 6.38
 Sun-Target sep (deg) : 94.73
 Sun-Moon sep (deg) : 131.56
 B (ring opening deg) : 26.01
 PA of pole (deg) : 5.95
 Pole direction: RA (deg): 39.48270
 Dec (deg): 83.42790
 C/A sky separation (") : 0.949
 C/A sky separation (km) : 6820.6
 NAIF SPICE kernels : RAJobs_U111+rgf16.spk

URKALLv1.spk
 naif0012.tls
 nep097.bsp
 nep101.bsp
 sat4401.bsp

Observable events with sun below -5 deg and altitude above 5 deg

Obs	Location	lat	Elon	Target	Observed Events Interval	OCode
PIC	Pic du Midi	42.9	0.1			Pnn
PAL	Palomar Mt (200")	33.4	243.1			Pnn
PMO	Purple Mtn Obs. Nanking	32.1	118.8	+	MAR 29 21:31 - MAR 29 21:31	Pin
KPNO	Kitt Peak Natl Obs	32.0	248.4			Pnn
MCD	McDonald Obs. 2.7m	30.7	256.0			Pnn
TEN	Teide Obs./Tenerife	28.3	343.5			Pnn
IRTF	Mauna Kea/IRTF	19.8	204.5			Pnn
KAV	Kavalur Observatory	12.6	78.8	+ +	MAR 29 21:20 - MAR 29 21:27	Pie
RIO	Rio de Janeiro	-22.9	316.8			Pnn
ESO	European Southern Obs. (3.6m)	-29.3	289.3			Pnn
AAT	Siding Spring (AAT)	-31.3	149.1			Pnn
SAAO	So. Afr. Astro. Obs. (Sutherland)	-32.4	20.8			Pnn
MSO	Mt. Stromlo Observatory	-35.3	149.0			Pnn



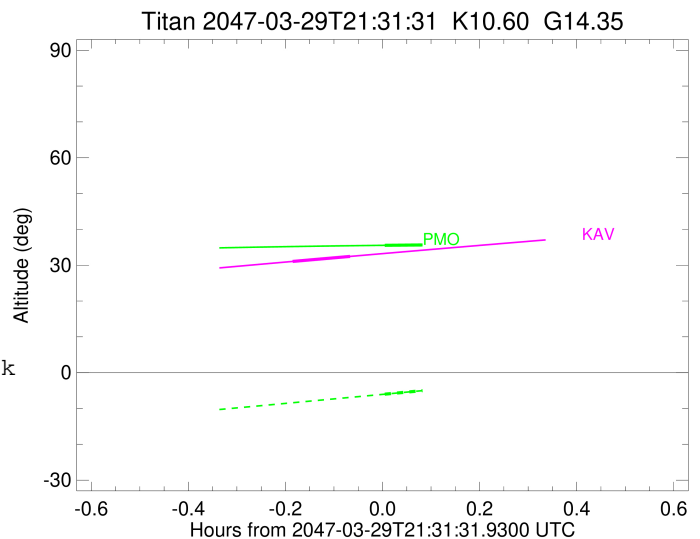
```

target                : Titan
target radius (km)   : 2575.15
C/A epoch            : 2047-03-29T21:36:17.620
Event type           : Pt
: Titan occs: topocentric, not geocentric
: Not a ringed target
Observer code        : PMO
Location             : Purple Mtn Obs. Nanking
Latitude (deg)       : 32.06667
E. Longitude (deg)   : 118.82089
Altitude (km)        : 0.364
Gaia source ID       : 4090524417551685248
2Mass ID (if available) : 18160699-2218173
ICRS Star Coord at Epoch: 18h 16m 07.00264s -22:18:17.24675s
RUWE (>1.4 is poor) : 0.88
K magnitude           : 10.597
G magnitude           : 14.347
RP magnitude          : 13.316
BP magnitude          : 15.457
DUPflag              : 0
Distance (au)         : 9.912
f0 (km)               : 0.00
g0 (km)               : 0.00
skyplane vel. (km/s) : 6.38
Sun-Target sep (deg) : 94.73
Sun-Moon sep (deg)   : 131.97
B (ring opening deg) : 26.01
PA of pole (deg)     : 5.95
Pole direction: RA (deg): 39.48270
Dec (deg): 83.42790
C/A sky separation (") : 0.277
C/A sky separation (km) : 1993.7
NAIF SPICE kernels   : RAJobs_U111+rgf16.spk
URKALLv1.spk
naif0012.tls
nep097.bsp
nep101.bsp
sat4401.bsp
de440.bsp
earth_720101_070426.bpc
jup365.bsp
urall6.bsp
IAU_SATURN_for_RINGFIT.tpc
pck00010.tpc
earth_200101_990628_predict.bpc
IAU_NEPTUNE_for_RINGFIT.tpc.BECAREFUL
uranus_ringframes_rfrench20220627_v1.tf
neptune_ringframes_rfrench20220702a_v1.tf
earth_flat_IAU.spk

```

x: target alt < 5.0 deg or sun > -5.0 deg

Target	I/E	UTC	alt	alt-sun	radius	lat-geo	lat-geodetic
Titan	I	2047-03-29T21:31:47.028	35.54	-6.01	2575.2	-15.69	-15.70
Titan	E	2047-03-29T21:40:47.968	35.72	-4.11x	2575.1	-63.35	-63.36



```

target                : Titan
target radius (km)   : 2575.15
C/A epoch            : 2047-03-29T21:23:59.020
Event type          : Pt
: Titan occs: topocentric, not geocentric
: Not a ringed target
Observer code       : KAV
Location            : Kavalur Observatory
Latitude (deg)      : 12.57556
E. Longitude (deg)  : 78.83167
Altitude (km)       : 0.722
Gaia source ID      : 4090524417551685248
2Mass ID (if available) : 18160699-2218173
ICRS Star Coord at Epoch: 18h 16m 07.00264s -22:18:17.24675s
RUWE (>1.4 is poor) : 0.88
K magnitude          : 10.597
G magnitude          : 14.347
RP magnitude         : 13.316
BP magnitude         : 15.457
DUPflag             : 0
Distance (au)       : 9.912
f0 (km)             : 0.00
g0 (km)             : 0.00
skyplane vel. (km/s) : 6.38
Sun-Target sep (deg) : 94.73
Sun-Moon sep (deg)  : 131.55
B (ring opening deg) : 26.01
PA of pole (deg)    : 5.95
Pole direction: RA (deg): 39.48270
Dec (deg): 83.42790
C/A sky separation (") : 0.309
C/A sky separation (km) : 2223.1
NAIF SPICE kernels  : RAJobs_U111+rgf16.spk
URKALLv1.spk
naif0012.tls
nep097.bsp
nep101.bsp
sat4401.bsp
de440.bsp
earth_720101_070426.bpc
jup365.bsp
urall6.bsp
IAU_SATURN_for_RINGFIT.tpc
pck00010.tpc
earth_200101_990628_predict.bpc
IAU_NEPTUNE_for_RINGFIT.tpc.BECAREFUL
uranus_ringframes_rfrench20220627_v1.tf
neptune_ringframes_rfrench20220702a_v1.tf
earth_flat_IAU.spk

```

x: target alt < 5.0 deg or sun > -5.0 deg

Target	I/E	UTC	alt	alt-sun	radius	lat-geo	lat-geodetic
Titan	I	2047-03-29T21:20:23.900	31.04	-49.14	2575.1	-24.76	-24.77
Titan	E	2047-03-29T21:27:34.127	32.45	-47.50	2575.1	-63.95	-63.96

