

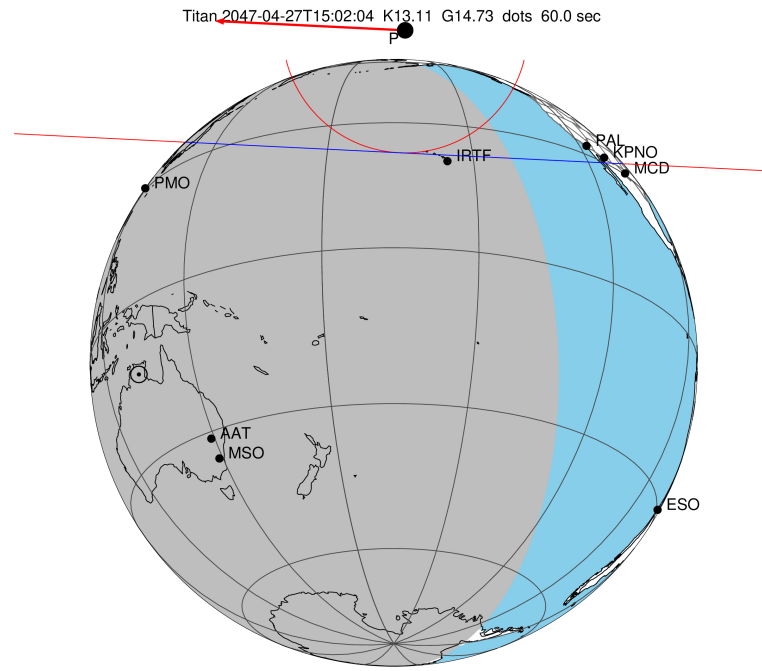
target : Titan
 target radius (km) : 2575.15
 C/A epoch : 2047-04-27T15:02:04.740
 Event type : P
 : Titan occs: not geocentric or topocentric
 : Not a ringed target
 Gaia source ID : 4090524275738771712
 2Mass ID (if available) : 18161943-2218325

ICRS Star Coord at Epoch: 18h 16m 19.42610s -22:18:32.79737s
 RUWE (>1.4 is poor) : 0.96
 K magnitude : 13.113
 G magnitude : 14.735
 RP magnitude : 14.155
 BP magnitude : 15.141
 DUPflag : 0
 Distance (au) : 9.457
 f0 (km) : 0.00
 g0 (km) : 0.00
 skyplane vel. (km/s) : -12.09
 Sun-Target sep (deg) : 122.85
 Sun-Moon sep (deg) : 149.12
 B (ring opening deg) : 26.00
 PA of pole (deg) : 5.96
 Pole direction: RA (deg): 39.48270
 Dec (deg): 83.42790
 C/A sky separation (") : 1.020
 C/A sky separation (km) : 6997.0
 NAIF SPICE kernels : RAJobs_U111+rgf16.spk

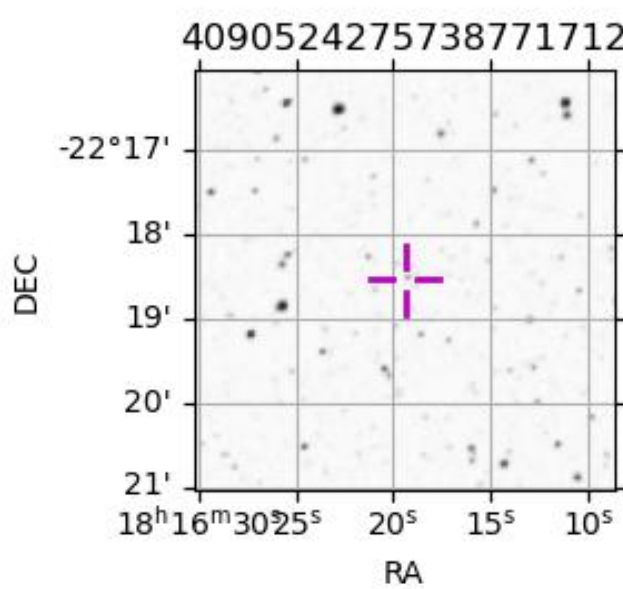
URKALLv1.spk
 naif0012.tls
 nep097.bsp
 nep101.bsp
 sat4401.bsp

Observable events with sun below -5 deg and altitude above 5 deg

Obs	Location	lat	Elon	Target	Observed Events	Interval	OEncode
PIC	Pic du Midi	42.9	0.1				Pnn
PAL	Palomar Mt (200")	33.4	243.1				Pnn
PMO	Purple Mtn Obs. Nanking	32.1	118.8				Pnn
KPNO	Kitt Peak Natl Obs	32.0	248.4				Pnn
MCD	McDonald Obs. 2.7m	30.7	256.0				Pnn
TEN	Teide Obs./Tenerife	28.3	343.5				Pnn
IRTF	Mauna Kea/IRTF	19.8	204.5				Pnn
KAV	Kavalur Observatory	12.6	78.8				Pnn
RIO	Rio de Janeiro	-22.9	316.8				Pnn
ESO	European Southern Obs. (3.6m)	-29.3	289.3				Pnn
AAT	Siding Spring (AAT)	-31.3	149.1				Pnn
SAAO	So. Afr. Astro. Obs. (Sutherland)	-32.4	20.8				Pnn
MSO	Mt. Stromlo Observatory	-35.3	149.0				Pnn



2047-04-27T15:02:04.7400 α: 18 16 19.4261 δ: -22 18 32.797 C/A 1.019" PA 2.82 deg v_sky -12.09 km/s D 09.46 AU
 Credit: Styled after SORA/Lucky Star



4090524275738771712