

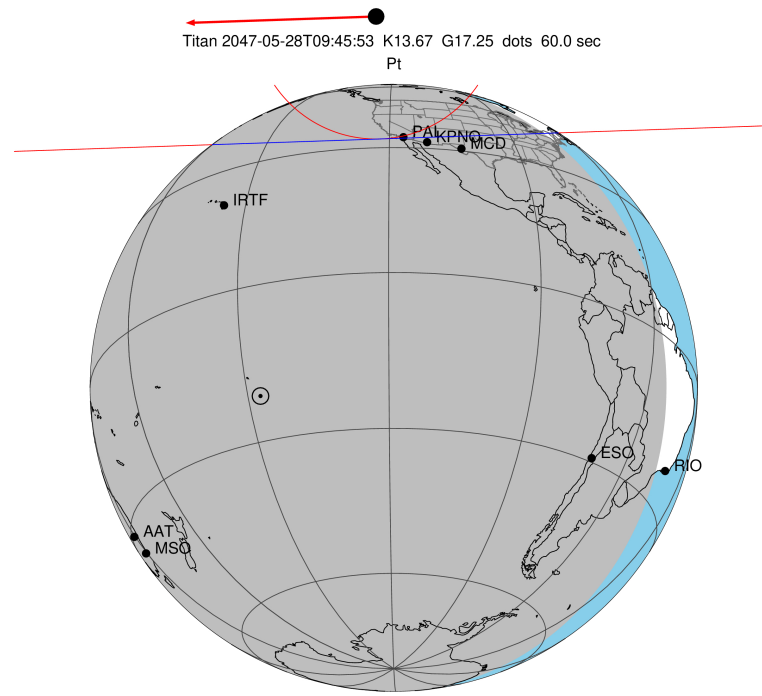
target : Titan
 target radius (km) : 2575.15
 C/A epoch : 2047-05-28T09:45:53.380
 Event type : Pt
 : Titan occs: topocentric, not geocentric
 : Not a ringed target
 Gaia source ID : 4066737990936381824
 2Mass ID (if available) : 18103132-2220324

ICRS Star Coord at Epoch: 18h 10m 31.32488s -22:20:32.48077s
 RUWE (>1.4 is poor) : 1.81
 K magnitude : 13.670
 G magnitude : 17.253
 RP magnitude : 16.178
 BP magnitude : 18.193
 DUPflag : 0
 Distance (au) : 9.119
 f0 (km) : 0.00
 g0 (km) : 0.00
 skyplane vel. (km/s) : -22.47
 Sun-Target sep (deg) : 153.91
 Sun-Moon sep (deg) : 165.79
 B (ring opening deg) : 26.18
 PA of pole (deg) : 5.86
 Pole direction: RA (deg): 39.48270
 Dec (deg): 83.42790
 C/A sky separation (") : 1.181
 C/A sky separation (km) : 7808.6
 NAIF SPICE kernels : RAJobs_U111+rgf16.spk

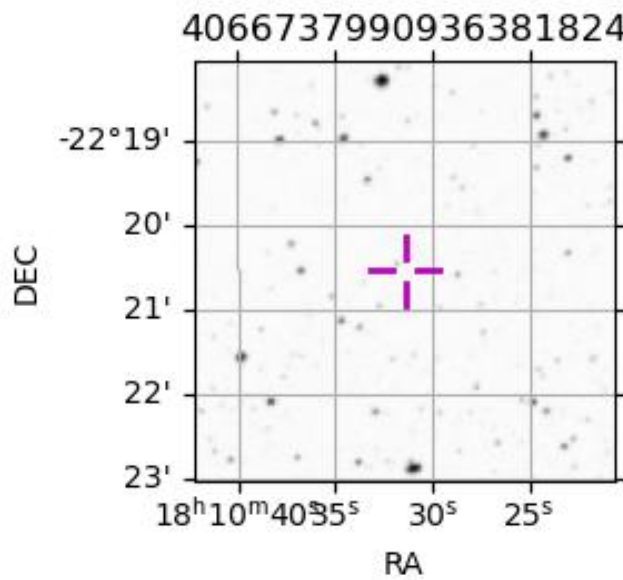
URKALLv1.spk
 naif0012.tls
 nep097.bsp
 nep101.bsp
 sat4401.bsp

Observable events with sun below -5 deg and altitude above 5 deg

Obs	Location	lat	Elon	Target	Observed Events Interval	OEcode
PIC	Pic du Midi	42.9	0.1			Pnn
PAL	Palomar Mt (200")	33.4	243.1	+ +	MAY 28 09:45 - MAY 28 09:45	Pie
PMO	Purple Mtn Obs. Nanking	32.1	118.8			Pnn
KPNO	Kitt Peak Natl Obs	32.0	248.4			Pnn
MCD	McDonald Obs. 2.7m	30.7	256.0			Pnn
TEN	Teide Obs./Tenerife	28.3	343.5			Pnn
IRTF	Mauna Kea/IRTF	19.8	204.5			Pnn
KAV	Kavalur Observatory	12.6	78.8			Pnn
RIO	Rio de Janeiro	-22.9	316.8			Pnn
ESO	European Southern Obs. (3.6m)	-29.3	289.3			Pnn
AAT	Siding Spring (AAT)	-31.3	149.1			Pnn
SAAO	So. Afr. Astro. Obs. (Sutherland)	-32.4	20.8			Pnn
MSO	Mt. Stromlo Observatory	-35.3	149.0			Pnn



2047-05-28T09:45:53.3800 cc: 18 10 31.3249 d: -22 20 32.481 C/A 1.181" PA 358.05 deg v_sky -22.47 km/s D 09.12 AU
 Credit: Styled after SORA/Lucky Star



```

target                : Titan
target radius (km)   : 2575.15
C/A epoch            : 2047-05-28T09:45:35.520
Event type           : Pt
: Titan occs: topocentric, not geocentric
: Not a ringed target
Observer code        : PAL
Location             : Palomar Mt (200")
Latitude (deg)       : 33.35622
E. Longitude (deg)  : 243.13601
Altitude (km)        : 1.706
Gaia source ID       : 4066737990936381824
2Mass ID (if available) : 18103132-2220324
ICRS Star Coord at Epoch: 18h 10m 31.32488s -22:20:32.48077s
RUWE (>1.4 is poor) : 1.81
K magnitude           : 13.670
G magnitude           : 17.253
RP magnitude         : 16.178
BP magnitude         : 18.193
DUPflag              : 0
Distance (au)        : 9.119
f0 (km)              : 0.00
g0 (km)              : 0.00
skyplane vel. (km/s) : -22.47
Sun-Target sep (deg) : 153.91
Sun-Moon sep (deg)  : 165.90
B (ring opening deg) : 26.18
PA of pole (deg)    : 5.86
Pole direction: RA (deg): 39.48270
Dec (deg): 83.42790
C/A sky separation ("): 0.388
C/A sky separation (km): 2568.5
NAIF SPICE kernels   : RAJobs_U111+rgf16.spk
URKALLv1.spk
naif0012.tls
nep097.bsp
nep101.bsp
sat4401.bsp
de440.bsp
earth_720101_070426.bpc
jup365.bsp
urall6.bsp
IAU_SATURN_for_RINGFIT.tpc
pck00010.tpc
earth_200101_990628_predict.bpc
IAU_NEPTUNE_for_RINGFIT.tpc.BECAREFUL
uranus_ringframes_rfrench20220627_v1.tf
neptune_ringframes_rfrench20220702a_v1.tf
earth_flat_IAU.spk

```

x: target alt < 5.0 deg or sun > -5.0 deg

Target	I/E	UTC	alt	alt-sun	radius	lat-geo	lat-geodetic
Titan	I	2047-05-28T09:45:27.475	34.46	-28.22	2575.1	-63.59	-63.60
Titan	E	2047-05-28T09:45:43.552	34.45	-28.19	2575.1	-61.44	-61.45

