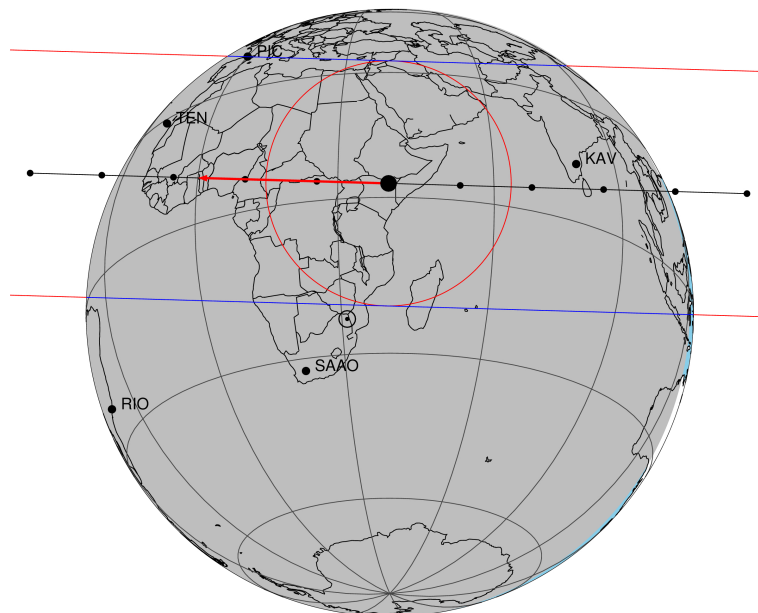


target : Titan
 target radius (km) : 2575.15
 C/A epoch : 2047-06-14T21:55:55.930
 Event type : Pt
 : Titan occs: topocentric, not geocentric
 : Not a ringed target
 Gaia source ID : 4069691038648259072
 2Mass ID (if available) : 18051266-2222082

ICRS Star Coord at Epoch: 18h 05m 12.65391s -22:22:08.45533s
 RUWE (>1.4 is poor) : 0.86
 K magnitude : 12.160
 G magnitude : 14.934
 RP magnitude : 14.195
 BP magnitude : 15.521
 DUPflag : 0
 Distance (au) : 9.033
 f0 (km) : 0.00
 g0 (km) : 0.00
 skyplane vel. (km/s) : -25.09
 Sun-Target sep (deg) : 171.85
 Sun-Moon sep (deg) : 77.27
 B (ring opening deg) : 26.33
 PA of pole (deg) : 5.76
 Pole direction: RA (deg): 39.48270
 Dec (deg): 83.42790
 C/A sky separation (") : 0.415
 C/A sky separation (km) : 2721.3
 NAIF SPICE kernels : RAJobs_U111+rgf16.spk

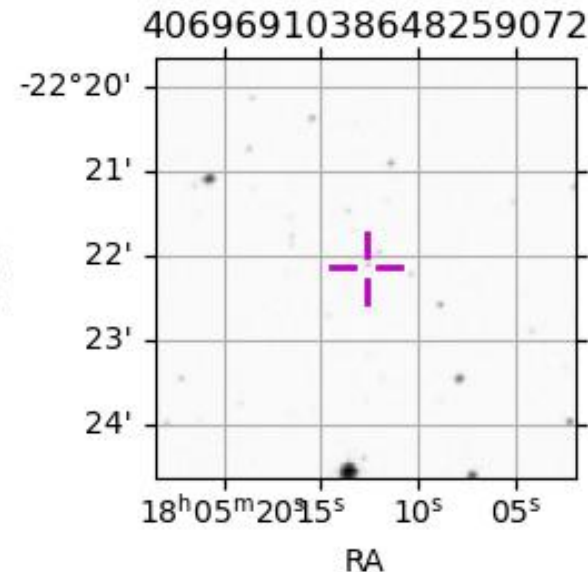
Titan 2047-06-14T21:55:55 K12.16 G14.93 dots 60.0 sec
Pt



2047-06-14T21:55:55.9300 α: 18 05 12.6539 δ: -22 22 08.455 C/A 0.415" PA 1.63 deg v_sky -25.10 km/s D 09.03 AU
Credit: Styled after SORA/Lucky Star

URKALLv1.spk
 naif0012.tls
 nep097.bsp
 nep101.bsp
 sat4401.bsp
 Observable events with sun below -5 deg and altitude above 5 deg

Obs	Location	lat	Elon	Target	Observed Events Interval	OEcode
PIC	Pic du Midi	42.9	0.1			Pnn
PAL	Palomar Mt (200")	33.4	243.1			Pnn
PMO	Purple Mtn Obs. Nanking	32.1	118.8			Pnn
KPNO	Kitt Peak Natl Obs	32.0	248.4			Pnn
MCD	McDonald Obs. 2.7m	30.7	256.0			Pnn
TEN	Teide Obs./Tenerife	28.3	343.5	+ +	JUN 14 21:57 - JUN 14 22:00	Pie
IRTF	Mauna Kea/IRTF	19.8	204.5			Pnn
KAV	Kavalur Observatory	12.6	78.8	+ +	JUN 14 21:51 - JUN 14 21:55	Pie
RIO	Rio de Janeiro	-22.9	316.8			Pnn
ESO	European Southern Obs. (3.6m)	-29.3	289.3			Pnn
AAT	Siding Spring (AAT)	-31.3	149.1			Pnn
SAAO	So. Afr. Astro. Obs. (Sutherland)	-32.4	20.8			Pnn
MSO	Mt. Stromlo Observatory	-35.3	149.0			Pnn



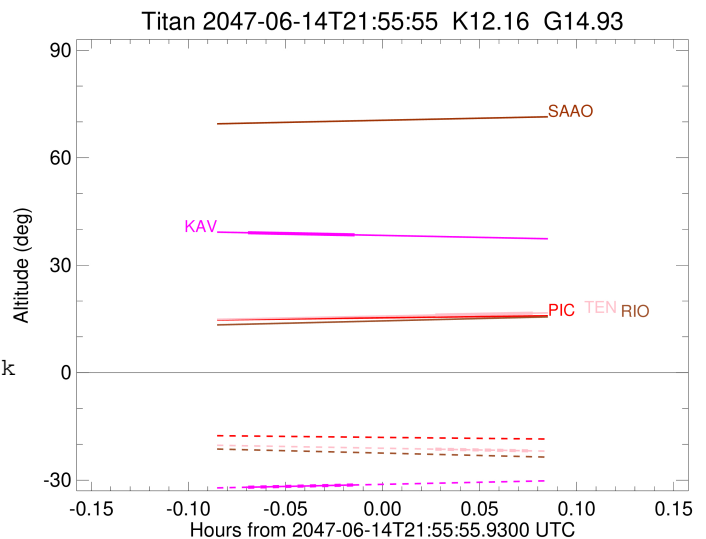
```

target                : Titan
target radius (km)   : 2575.15
C/A epoch            : 2047-06-14T21:59:04.250
Event type           : Pt
: Titan occs: topocentric, not geocentric
: Not a ringed target
Observer code        : TEN
Location             : Teide Obs./Tenerife
Latitude (deg)       : 28.30050
E. Longitude (deg)  : 343.48909
Altitude (km)        : 2.395
Gaia source ID       : 4069691038648259072
2Mass ID (if available) : 18051266-2222082
ICRS Star Coord at Epoch: 18h 05m 12.65391s -22:22:08.45533s
RUWE (>1.4 is poor) : 0.86
K magnitude          : 12.160
G magnitude          : 14.934
RP magnitude         : 14.195
BP magnitude         : 15.521
DUPflag             : 0
Distance (au)        : 9.033
f0 (km)              : 0.00
g0 (km)              : 0.00
skyplane vel. (km/s) : -25.09
Sun-Target sep (deg) : 171.85
Sun-Moon sep (deg)   : 77.65
B (ring opening deg) : 26.33
PA of pole (deg)     : 5.76
Pole direction: RA (deg): 39.48270
Dec (deg): 83.42790
C/A sky separation (") : 0.177
C/A sky separation (km) : 1156.9
NAIF SPICE kernels   : RAJobs_U111+rgf16.spk
URKALLv1.spk
naif0012.tls
nep097.bsp
nep101.bsp
sat4401.bsp
de440.bsp
earth_720101_070426.bpc
jup365.bsp
urall6.bsp
IAU_SATURN_for_RINGFIT.tpc
pck00010.tpc
earth_200101_990628_predict.bpc
IAU_NEPTUNE_for_RINGFIT.tpc.BECAREFUL
uranus_ringframes_rfrench20220627_v1.tf
neptune_ringframes_rfrench20220702a_v1.tf
earth_flat_IAU.spk

```

x: target alt < 5.0 deg or sun > -5.0 deg

Target	I/E	UTC	alt	alt-sun	radius	lat-geo	lat-geodetic
Titan	I	2047-06-14T21:57:33.386	16.08	-21.35	2575.1	19.86	19.87
Titan	E	2047-06-14T22:00:35.100	16.61	-21.83	2575.1	27.59	27.60



```

target                : Titan
target radius (km)   : 2575.15
C/A epoch             : 2047-06-14T21:53:25.150
Event type            : Pt
: Titan occs: topocentric, not geocentric
: Not a ringed target
Observer code         : KAV
Location              : Kavalur Observatory
Latitude (deg)        : 12.57556
E. Longitude (deg)   : 78.83167
Altitude (km)         : 0.722
Gaia source ID        : 4069691038648259072
2Mass ID (if available) : 18051266-2222082
ICRS Star Coord at Epoch: 18h 05m 12.65391s -22:22:08.45533s
RUWE (>1.4 is poor) : 0.86
K magnitude           : 12.160
G magnitude           : 14.934
RP magnitude          : 14.195
BP magnitude          : 15.521
DUPflag              : 0
Distance (au)         : 9.033
f0 (km)               : 0.00
g0 (km)               : 0.00
skyplane vel. (km/s) : -25.09
Sun-Target sep (deg) : 171.85
Sun-Moon sep (deg)   : 77.70
B (ring opening deg) : 26.33
PA of pole (deg)     : 5.76
Pole direction: RA (deg): 39.48270
Dec (deg): 83.42790
C/A sky separation (") : 0.077
C/A sky separation (km) : 503.7
NAIF SPICE kernels   : RAJobs_U111+rgf16.spk
URKALLv1.spk
naif0012.tls
nep097.bsp
nep101.bsp
sat4401.bsp
de440.bsp
earth_720101_070426.bpc
jup365.bsp
urall6.bsp
IAU_SATURN_for_RINGFIT.tpc
pck00010.tpc
earth_200101_990628_predict.bpc
IAU_NEPTUNE_for_RINGFIT.tpc.BECAREFUL
uranus_ringframes_rfrench20220627_v1.tf
neptune_ringframes_rfrench20220702a_v1.tf
earth_flat_IAU.spk

```

x: target alt < 5.0 deg or sun > -5.0 deg

Target	I/E	UTC	alt	alt-sun	radius	lat-geo	lat-geodetic
Titan	I	2047-06-14T21:51:45.946	39.06	-31.98	2575.2	6.60	6.61
Titan	E	2047-06-14T21:55:04.371	38.46	-31.34	2575.1	13.57	13.58

