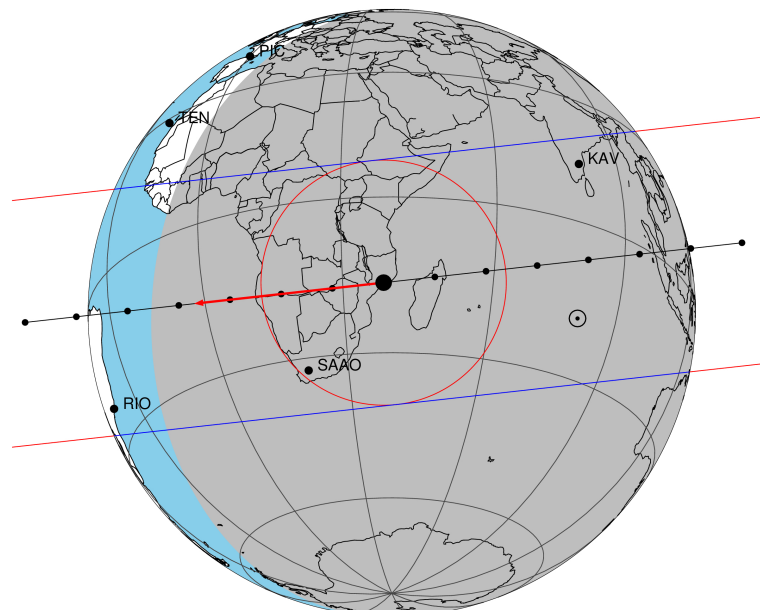


target : Titan
 target radius (km) : 2575.15
 C/A epoch : 2047-07-29T18:46:54.090
 Event type : Pgt
 : Titan occs: geocentric, topocentric
 : Not a ringed target
 Gaia source ID : 4070419052784836992
 2Mass ID (if available) : 17522445-2226281

Titan 2047-07-29T18:46:54 K12.73 G17.29 dots 60.0 sec
 Pgt

ICRS Star Coord at Epoch: 17h 52m 24.44609s -22:26:28.71393s
 RUWE (>1.4 is poor) : 1.00
 K magnitude : 12.735
 G magnitude : 17.291
 RP magnitude : 16.039
 BP magnitude : 18.848
 DUPflag : 0
 Distance (au) : 9.219
 f0 (km) : 0.00
 g0 (km) : 0.00
 skyplane vel. (km/s) : -18.02
 Sun-Target sep (deg) : 142.30
 Sun-Moon sep (deg) : 54.38
 B (ring opening deg) : 26.69
 PA of pole (deg) : 5.52
 Pole direction: RA (deg): 39.48270
 Dec (deg): 83.42790
 C/A sky separation (") : 0.095
 C/A sky separation (km) : 636.5
 NAIF SPICE kernels : RAJobs_U111+rgf16.spk

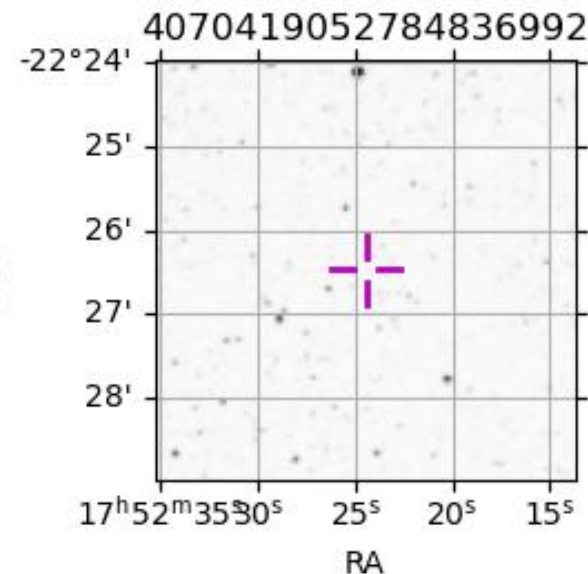


2047-07-29T18:46:54.09000 cc: 17 52 24.4461 d: -22 26 28.714 C/A 0.097" PA 353.63 deg v_sky -18.03 km/s D 09.22 AU
 Credit: Styled after SORA/Lucky Star

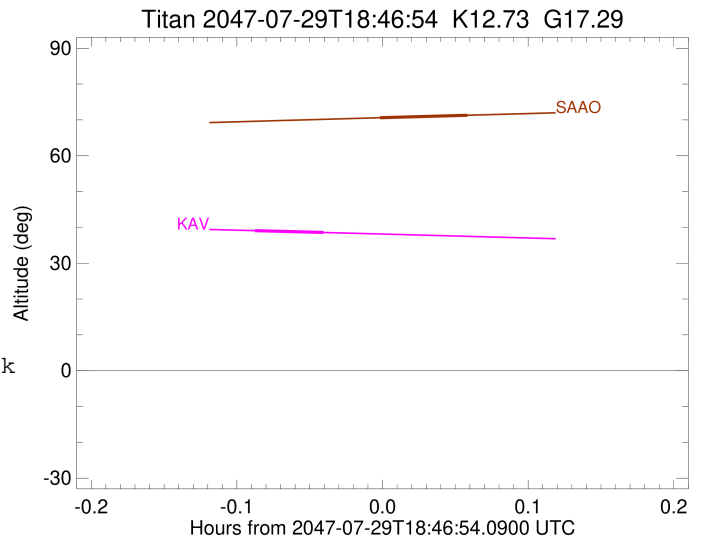
URKALLv1.spk
 naif0012.tls
 nep097.bsp
 nep101.bsp
 sat4401.bsp

Observable events with sun below -5 deg and altitude above 5 deg

Obs	Location	lat	Elon	Target	Observed Events Interval	OEncode
PIC	Pic du Midi	42.9	0.1			Pnn
PAL	Palomar Mt (200")	33.4	243.1			Pnn
PMO	Purple Mtn Obs. Nanking	32.1	118.8			Pnn
KPNO	Kitt Peak Natl Obs	32.0	248.4			Pnn
MCD	McDonald Obs. 2.7m	30.7	256.0			Pnn
TEN	Teide Obs./Tenerife	28.3	343.5			Pnn
IRTF	Mauna Kea/IRTF	19.8	204.5			Pnn
KAV	Kavalur Observatory	12.6	78.8	+ +	JUL 29 18:41 - JUL 29 18:44	Pie
RIO	Rio de Janeiro	-22.9	316.8			Pnn
ESO	European Southern Obs. (3.6m)	-29.3	289.3			Pnn
AAT	Siding Spring (AAT)	-31.3	149.1			Pnn
SAAO	So. Afr. Astro. Obs. (Sutherland)	-32.4	20.8	+ +	JUL 29 18:46 - JUL 29 18:50	Pie
MSO	Mt. Stromlo Observatory	-35.3	149.0			Pnn



target : Titan
 target radius (km) : 2575.15
 C/A epoch : 2047-07-29T18:43:02.890
 Event type : Pgt
 : Titan occs: geocentric, topocentric
 : Not a ringed target
 Observer code : KAV
 Location : Kavalur Observatory
 Latitude (deg) : 12.57556
 E. Longitude (deg) : 78.83167
 Altitude (km) : 0.722
 Gaia source ID : 4070419052784836992
 2Mass ID (if available) : 17522445-2226281
 ICRS Star Coord at Epoch: 17h 52m 24.44609s -22:26:28.71393s
 RUWE (>1.4 is poor) : 1.00
 K magnitude : 12.735
 G magnitude : 17.291
 RP magnitude : 16.039
 BP magnitude : 18.848
 DUPflag : 0
 Distance (au) : 9.219
 f0 (km) : 0.00
 g0 (km) : 0.00
 skyplane vel. (km/s) : -18.02
 Sun-Target sep (deg) : 142.30
 Sun-Moon sep (deg) : 55.26
 B (ring opening deg) : 26.69
 PA of pole (deg) : 5.52
 Pole direction: RA (deg): 39.48270
 Dec (deg): 83.42790
 C/A sky separation (") : 0.306
 C/A sky separation (km) : 2043.0
 NAIF SPICE kernels : RAJobs_U111+rgf16.spk
 URKALLv1.spk
 naif0012.tls
 nep097.bsp
 nep101.bsp
 sat4401.bsp
 de440.bsp
 earth_720101_070426.bpc
 jup365.bsp
 urall6.bsp
 IAU_SATURN_for_RINGFIT.tpc
 pck00010.tpc
 earth_200101_990628_predict.bpc
 IAU_NEPTUNE_for_RINGFIT.tpc.BECAREFUL
 uranus_ringframes_rfrench20220627_v1.tf
 neptune_ringframes_rfrench20220702a_v1.tf
 earth_flat_IAU.spk



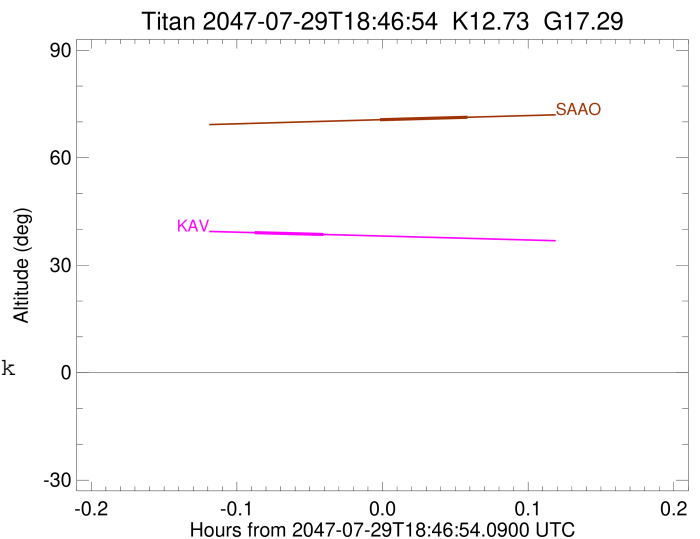
x: target alt < 5.0 deg or sun > -5.0 deg

Target	I/E	UTC	alt	alt-sun	radius	lat-geo	lat-geodetic
Titan	I	2047-07-29T18:41:37.547	39.08	-58.80	2575.1	35.96	35.97
Titan	E	2047-07-29T18:44:28.238	38.57	-58.85	2575.1	53.36	53.37

```

target                : Titan
target radius (km)   : 2575.15
C/A epoch             : 2047-07-29T18:48:35.900
Event type           : Pgt
: Titan occs: geocentric, topocentric
: Not a ringed target
Observer code        : SAAO
Location             : So. Afr. Astro. Obs. (Sutherland)
Latitude (deg)       : -32.37953
E. Longitude (deg)   : 20.81070
Altitude (km)        : 1.768
Gaia source ID       : 4070419052784836992
2Mass ID (if available) : 17522445-2226281
ICRS Star Coord at Epoch: 17h 52m 24.44609s -22:26:28.71393s
RUWE (>1.4 is poor) : 1.00
K magnitude          : 12.735
G magnitude          : 17.291
RP magnitude         : 16.039
BP magnitude         : 18.848
DUPflag             : 0
Distance (au)        : 9.219
f0 (km)              : 0.00
g0 (km)              : 0.00
skyplane vel. (km/s) : -18.02
Sun-Target sep (deg) : 142.30
Sun-Moon sep (deg)   : 54.98
B (ring opening deg) : 26.69
PA of pole (deg)     : 5.52
Pole direction: RA (deg): 39.48270
Dec (deg): 83.42790
C/A sky separation (") : 0.242
C/A sky separation (km) : 1617.4
NAIF SPICE kernels   : RAJobs_U111+rgf16.spk
URKALLv1.spk
naif0012.tls
nep097.bsp
nep101.bsp
sat4401.bsp
de440.bsp
earth_720101_070426.bpc
jup365.bsp
urall6.bsp
IAU_SATURN_for_RINGFIT.tpc
pck00010.tpc
earth_200101_990628_predict.bpc
IAU_NEPTUNE_for_RINGFIT.tpc.BECAREFUL
uranus_ringframes_rfrench20220627_v1.tf
neptune_ringframes_rfrench20220702a_v1.tf
earth_flat_IAU.spk

```



x: target alt < 5.0 deg or sun > -5.0 deg

Target	I/E	UTC	alt	alt-sun	radius	lat-geo	lat-geodetic
Titan	I	2047-07-29T18:46:47.038	70.60	-35.58	2575.1	-43.81	-43.82
Titan	E	2047-07-29T18:50:24.761	71.29	-36.35	2575.1	-23.97	-23.98