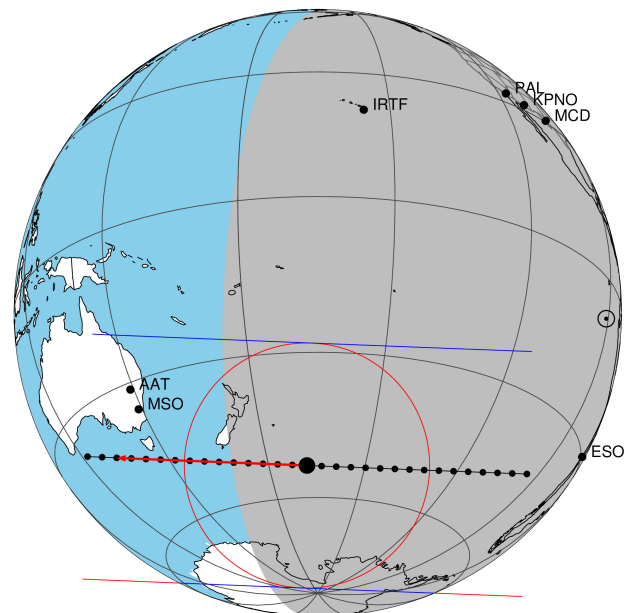


target : Titan  
 target radius (km) : 2575.15  
 C/A epoch : 2047-09-02T06:04:40.570  
 Event type : Pt  
 : Titan occs: topocentric, not geocentric  
 : Not a ringed target  
 Gaia source ID : 4068972718287620992  
 2Mass ID (if available) : 17482017-2231064

ICRS Star Coord at Epoch: 17h 48m 20.17151s -22:31:07.35050s  
 RUWE (>1.4 is poor) : 0.00  
 K magnitude : 10.741  
 G magnitude : 18.033  
 RP magnitude : 0.000  
 BP magnitude : 0.000  
 DUPflag : 0  
 Distance (au) : 9.677  
 f0 (km) : 0.00  
 g0 (km) : 0.00  
 skyplane vel. (km/s) : -5.12  
 Sun-Target sep (deg) : 108.24  
 Sun-Moon sep (deg) : 46.53  
 B (ring opening deg) : 26.86  
 PA of pole (deg) : 5.44  
 Pole direction: RA (deg): 39.48270  
 Dec (deg): 83.42790  
 C/A sky separation (") : 0.458  
 C/A sky separation (km) : 3213.1  
 NAIF SPICE kernels : RAJobs\_U111+rgf16.spk

Titan 2047-09-02T06:04:40 K10.74 G18.03 dots 60.0 sec  
 Pt

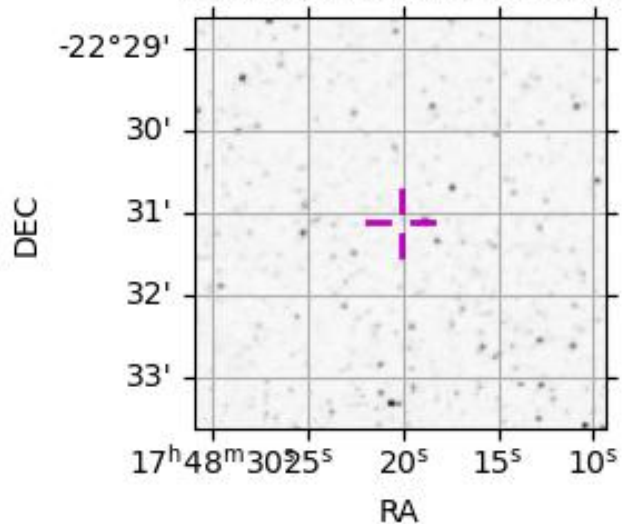


2047-09-02T06:04:40.5700 α: 17 48 20.1715 δ: -22 31 07.350 C/A 0.458" PA 182.27 deg v\_sky - 5.13 km/s D 09.68 AU  
 Credit: Styled after SORA/Lucky Star

Observable events with sun below -5 deg and altitude above 5 deg

Obs	Location	lat	Elon	Target	Observed Events Interval	OCode
PIC	Pic du Midi	42.9	0.1			Pnn
PAL	Palomar Mt (200")	33.4	243.1			Pnn
PMO	Purple Mtn Obs. Nanking	32.1	118.8			Pnn
KPNO	Kitt Peak Natl Obs	32.0	248.4			Pnn
MCD	McDonald Obs. 2.7m	30.7	256.0			Pnn
TEN	Teide Obs./Tenerife	28.3	343.5			Pnn
IRTF	Mauna Kea/IRTF	19.8	204.5			Pnn
KAV	Kavalur Observatory	12.6	78.8			Pnn
RIO	Rio de Janeiro	-22.9	316.8			Pnn
ESO	European Southern Obs. (3.6m)	-29.3	289.3	+ +	SEP 02 05:38 - SEP 02 05:54	Pie
AAT	Siding Spring (AAT)	-31.3	149.1			Pnn
SAAO	So. Afr. Astro. Obs. (Sutherland)	-32.4	20.8			Pnn
MSO	Mt. Stromlo Observatory	-35.3	149.0			Pnn

4068972718287620992



target : Titan  
 target radius (km) : 2575.15  
 C/A epoch : 2047-09-02T05:46:20.490  
 Event type : Pt  
 : Titan occs: topocentric, not geocentric  
 : Not a ringed target  
 Observer code : ESO  
 Location : European Southern Obs. (3.6m)  
 Latitude (deg) : -29.26097  
 E. Longitude (deg) : 289.26831  
 Altitude (km) : 2.400  
 Gaia source ID : 4068972718287620992  
 2Mass ID (if available) : 17482017-2231064  
 ICRS Star Coord at Epoch: 17h 48m 20.17151s -22:31:07.35050s  
 RUWE (>1.4 is poor) : 0.00  
 K magnitude : 10.741  
 G magnitude : 18.033  
 RP magnitude : 0.000  
 BP magnitude : 0.000  
 DUPflag : 0  
 Distance (au) : 9.677  
 f0 (km) : 0.00  
 g0 (km) : 0.00  
 skyplane vel. (km/s) : -5.12  
 Sun-Target sep (deg) : 108.24  
 Sun-Moon sep (deg) : 46.06  
 B (ring opening deg) : 26.86  
 PA of pole (deg) : 5.44  
 Pole direction: RA (deg): 39.48270  
 Dec (deg): 83.42790  
 C/A sky separation (") : 0.080  
 C/A sky separation (km) : 559.8  
 NAIF SPICE kernels : RAJobs\_U111+rgf16.spk  
 URKALLv1.spk  
 naif0012.tls  
 nep097.bsp  
 nep101.bsp  
 sat4401.bsp  
 de440.bsp  
 earth\_720101\_070426.bpc  
 jup365.bsp  
 urall6.bsp  
 IAU\_SATURN\_for\_RINGFIT.tpc  
 pck00010.tpc  
 earth\_200101\_990628\_predict.bpc  
 IAU\_NEPTUNE\_for\_RINGFIT.tpc.BECAREFUL  
 uranus\_ringframes\_rfrench20220627\_v1.tf  
 neptune\_ringframes\_rfrench20220702a\_v1.tf  
 earth\_flat\_IAU.spk

x: target alt < 5.0 deg or sun > -5.0 deg

Target	I/E	UTC	alt	alt-sun	radius	lat-geo	lat-geodetic
Titan	I	2047-09-02T05:38:13.642	12.92	-65.12	2575.1	9.75	9.76
Titan	E	2047-09-02T05:54:29.217	9.56	-62.91	2575.1	12.55	12.55

