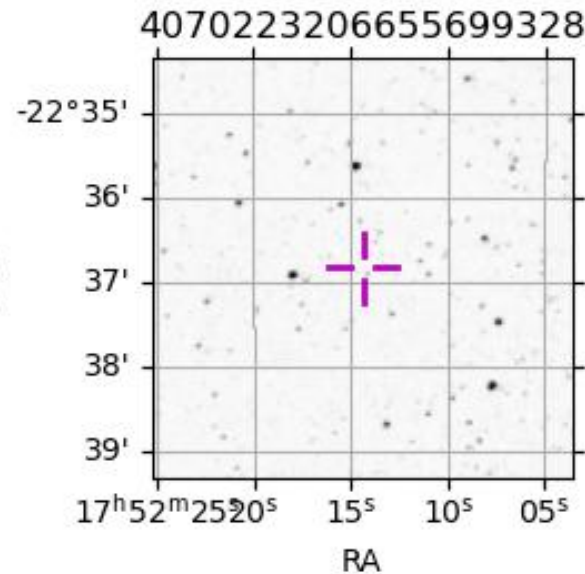
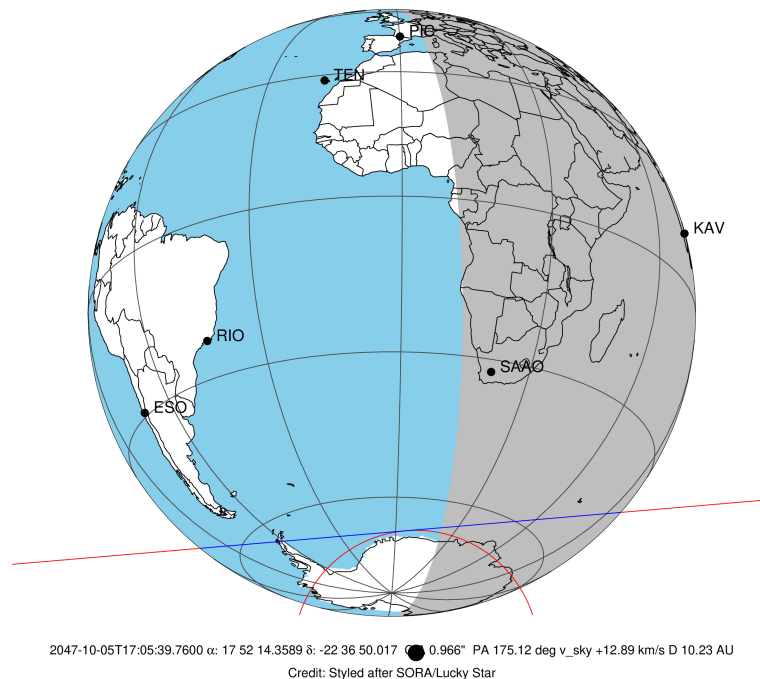


target : Titan  
 target radius (km) : 2575.15  
 C/A epoch : 2047-10-05T17:05:39.760  
 Event type : P  
 : Titan occs: not geocentric or topocentric  
 : Not a ringed target  
 Gaia source ID : 4070223206655699328  
 2Mass ID (if available) : 17521438-2236496

ICRS Star Coord at Epoch: 17h 52m 14.35892s -22:36:50.01722s  
 RUWE (>1.4 is poor) : 1.04  
 K magnitude : 12.975  
 G magnitude : 17.642  
 RP magnitude : 16.366  
 BP magnitude : 19.136  
 DUPflag : 0  
 Distance (au) : 10.226  
 f0 (km) : 0.00  
 g0 (km) : 0.00  
 skyplane vel. (km/s) : 12.90  
 Sun-Target sep (deg) : 76.49  
 Sun-Moon sep (deg) : 122.39  
 B (ring opening deg) : 26.87  
 PA of pole (deg) : 5.52  
 Pole direction: RA (deg): 39.48270  
 Dec (deg): 83.42790  
 C/A sky separation (") : 0.967  
 C/A sky separation (km) : 7173.2  
 NAIF SPICE kernels : RAJobs\_U111+rgf16.spk  
 URKALLv1.spk  
 naif0012.tls  
 nep097.bsp  
 nep101.bsp  
 sat4401.bsp

Titan 2047-10-05T17:05:39 K12.97 G17.64 dots 60.0 sec  
 P



Observable events with sun below -5 deg and altitude above 5 deg

| Obs  | Location                          | lat   | Elon  | Target | Observed Events | Interval | OEcode |
|------|-----------------------------------|-------|-------|--------|-----------------|----------|--------|
| PIC  | Pic du Midi                       | 42.9  | 0.1   |        |                 |          | Pnn    |
| PAL  | Palomar Mt (200")                 | 33.4  | 243.1 |        |                 |          | Pnn    |
| PMO  | Purple Mtn Obs. Nanking           | 32.1  | 118.8 |        |                 |          | Pnn    |
| KPNO | Kitt Peak Natl Obs                | 32.0  | 248.4 |        |                 |          | Pnn    |
| MCD  | McDonald Obs. 2.7m                | 30.7  | 256.0 |        |                 |          | Pnn    |
| TEN  | Teide Obs./Tenerife               | 28.3  | 343.5 |        |                 |          | Pnn    |
| IRTF | Mauna Kea/IRTF                    | 19.8  | 204.5 |        |                 |          | Pnn    |
| KAV  | Kavalur Observatory               | 12.6  | 78.8  |        |                 |          | Pnn    |
| RIO  | Rio de Janeiro                    | -22.9 | 316.8 |        |                 |          | Pnn    |
| ESO  | European Southern Obs. (3.6m)     | -29.3 | 289.3 |        |                 |          | Pnn    |
| AAT  | Siding Spring (AAT)               | -31.3 | 149.1 |        |                 |          | Pnn    |
| SAAO | So. Afr. Astro. Obs. (Sutherland) | -32.4 | 20.8  |        |                 |          | Pnn    |
| MSO  | Mt. Stromlo Observatory           | -35.3 | 149.0 |        |                 |          | Pnn    |