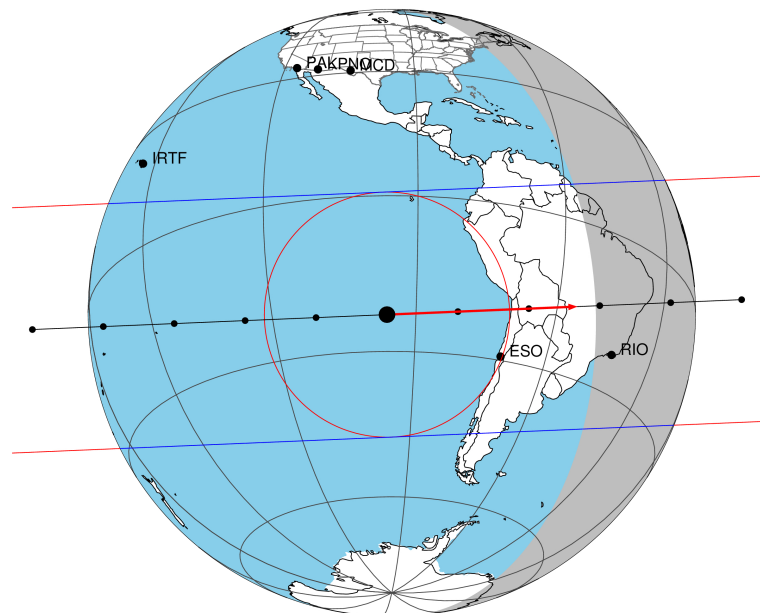


target : Titan
 target radius (km) : 2575.15
 C/A epoch : 2047-11-05T21:24:42.560
 Event type : Pgt
 : Titan occs: geocentric, topocentric
 : Not a ringed target
 Gaia source ID : 4069471759106750464
 2Mass ID (if available) : 18021520-2241585

ICRS Star Coord at Epoch: 18h 02m 15.20083s -22:41:58.74648s
 RUWE (>1.4 is poor) : 0.95
 K magnitude : 14.270
 G magnitude : 17.903
 RP magnitude : 16.815
 BP magnitude : 19.130
 DUPflag : 0
 Distance (au) : 10.677
 f0 (km) : 0.00
 g0 (km) : 0.00
 skyplane vel. (km/s) : 24.85
 Sun-Target sep (deg) : 47.81
 Sun-Moon sep (deg) : 166.47
 B (ring opening deg) : 26.72
 PA of pole (deg) : 5.72
 Pole direction: RA (deg): 39.48270
 Dec (deg): 83.42790
 C/A sky separation (") : 0.005
 C/A sky separation (km) : 38.0
 NAIF SPICE kernels : RAJobs_U111+rgf16.spk
 URKALLv1.spk
 naif0012.tls
 nep097.bsp
 nep101.bsp
 sat4401.bsp

Titan 2047-11-05T21:24:42 K14.27 G17.90 dots 60.0 sec
 Pgt

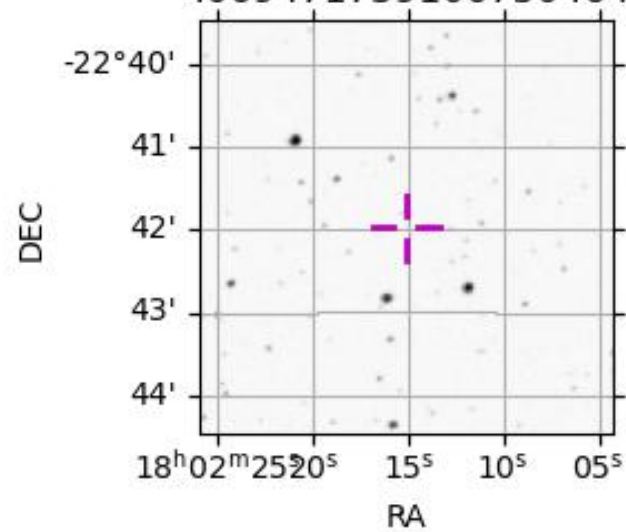


2047-11-05T21:24:42.5600 α: 18 02 15.2008 δ: -22 41 58.746 C/A 0.004" PA 177.64 deg v_sky +24.84 km/s D 10.68 AU
 Credit: Styled after SORA/Lucky Star

Observable events with sun below -5 deg and altitude above 5 deg

Obs	Location	lat	Elon	Target	Observed Events Interval	OEcode
PIC	Pic du Midi	42.9	0.1			Pnn
PAL	Palomar Mt (200")	33.4	243.1			Pnn
PMO	Purple Mtn Obs. Nanking	32.1	118.8			Pnn
KPNO	Kitt Peak Natl Obs	32.0	248.4			Pnn
MCD	McDonald Obs. 2.7m	30.7	256.0			Pnn
TEN	Teide Obs./Tenerife	28.3	343.5			Pnn
IRTF	Mauna Kea/IRTF	19.8	204.5			Pnn
KAV	Kavalur Observatory	12.6	78.8			Pnn
RIO	Rio de Janeiro	-22.9	316.8	+	NOV 05 21:29 - NOV 05 21:29	Pne
ESO	European Southern Obs. (3.6m)	-29.3	289.3			Pnn
AAT	Siding Spring (AAT)	-31.3	149.1			Pnn
SAAO	So. Afr. Astro. Obs. (Sutherland)	-32.4	20.8			Pnn
MSO	Mt. Stromlo Observatory	-35.3	149.0			Pnn

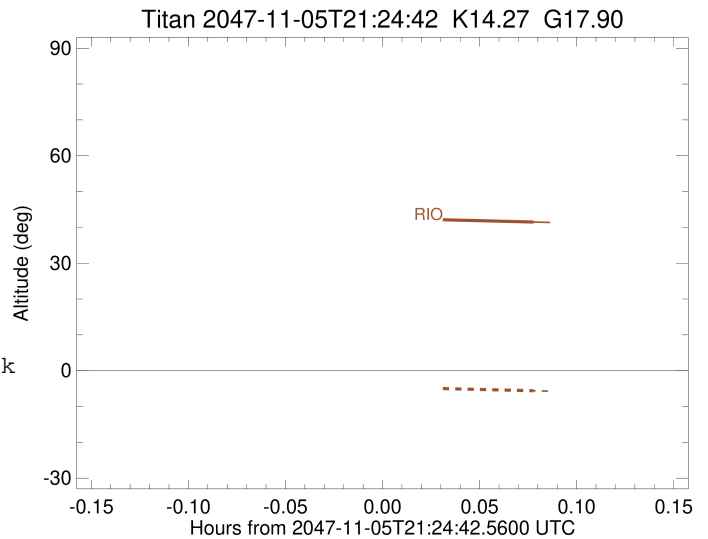
4069471759106750464



```

target                : Titan
target radius (km)   : 2575.15
C/A epoch             : 2047-11-05T21:27:48.140
Event type            : Pgt
: Titan occs: geocentric, topocentric
: Not a ringed target
Observer code        : RIO
Location             : Rio de Janeiro
Latitude (deg)       : -22.89506
E. Longitude (deg)   : 316.77708
Altitude (km)        : 0.033
Gaia source ID       : 4069471759106750464
2Mass ID (if available) : 18021520-2241585
ICRS Star Coord at Epoch: 18h 02m 15.20083s -22:41:58.74648s
RUWE (>1.4 is poor) : 0.95
K magnitude          : 14.270
G magnitude          : 17.903
RP magnitude         : 16.815
BP magnitude         : 19.130
DUPflag             : 0
Distance (au)        : 10.677
f0 (km)              : 0.00
g0 (km)              : 0.00
skyplane vel. (km/s) : 24.85
Sun-Target sep (deg) : 47.81
Sun-Moon sep (deg)   : 167.21
B (ring opening deg) : 26.72
PA of pole (deg)     : 5.72
Pole direction: RA (deg): 39.48270
Dec (deg): 83.42790
C/A sky separation (") : 0.139
C/A sky separation (km) : 1075.9
NAIF SPICE kernels   : RAJobs_U111+rgf16.spk
URKALLv1.spk
naif0012.tls
nep097.bsp
nep101.bsp
sat4401.bsp
de440.bsp
earth_720101_070426.bpc
jup365.bsp
urall6.bsp
IAU_SATURN_for_RINGFIT.tpc
pck00010.tpc
earth_200101_990628_predict.bpc
IAU_NEPTUNE_for_RINGFIT.tpc.BECAREFUL
uranus_ringframes_rfrench20220627_v1.tf
neptune_ringframes_rfrench20220702a_v1.tf
earth_flat_IAU.spk

```



x: target alt < 5.0 deg or sun > -5.0 deg

Target	I/E	UTC	alt	alt-sun	radius	lat-geo	lat-geodetic
Titan	I	2047-11-05T21:26:12.994	42.20	-4.92x	2575.1	-14.45	-14.46
Titan	E	2047-11-05T21:29:23.279	41.48	-5.61	2575.1	-29.25	-29.27