

target : Titan  
 target radius (km) : 2575.15  
 C/A epoch : 2048-02-19T09:07:07.720  
 Event type : Pt  
 : Titan occs: topocentric, not geocentric  
 : Not a ringed target  
 Gaia source ID : 4078738821071160192  
 2Mass ID (if available) : 18522623-2215217

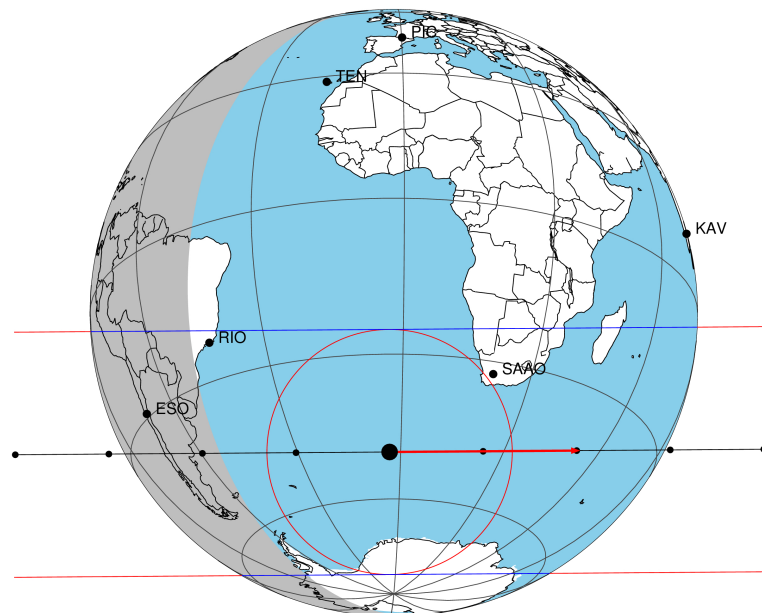
ICRS Star Coord at Epoch: 18h 52m 26.23786s -22:15:22.21314s  
 RUWE (>1.4 is poor) : 0.93  
 K magnitude : 13.372  
 G magnitude : 15.312  
 RP magnitude : 14.663  
 BP magnitude : 15.796  
 DUPflag : 0  
 Distance (au) : 10.686  
 f0 (km) : 0.00  
 g0 (km) : 0.00  
 skyplane vel. (km/s) : 32.74  
 Sun-Target sep (deg) : 47.60  
 Sun-Moon sep (deg) : 111.01  
 B (ring opening deg) : 25.04  
 PA of pole (deg) : 6.50  
 Pole direction: RA (deg): 39.48270  
 Dec (deg): 83.42790  
 C/A sky separation (") : 0.376  
 C/A sky separation (km) : 2914.8  
 NAIF SPICE kernels : RAJobs\_U111+rgf16.spk

URKALLv1.spk  
 naif0012.tls  
 nep097.bsp  
 nep101.bsp  
 sat4401.bsp

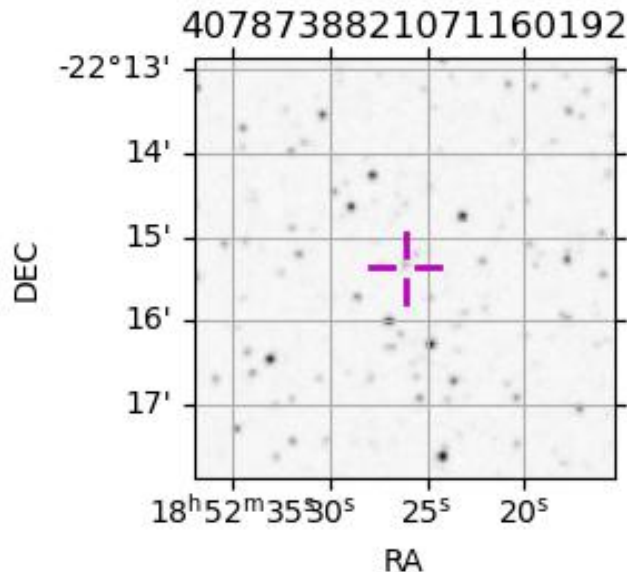
Observable events with sun below -5 deg and altitude above 5 deg

Obs	Location	lat	Elon	Target	Observed Events Interval	OCode
PIC	Pic du Midi	42.9	0.1			Pnn
PAL	Palomar Mt (200")	33.4	243.1			Pnn
PMO	Purple Mtn Obs. Nanking	32.1	118.8			Pnn
KPNO	Kitt Peak Natl Obs	32.0	248.4			Pnn
MCD	McDonald Obs. 2.7m	30.7	256.0			Pnn
TEN	Teide Obs./Tenerife	28.3	343.5			Pnn
IRTF	Mauna Kea/IRTF	19.8	204.5			Pnn
KAV	Kavalur Observatory	12.6	78.8			Pnn
RIO	Rio de Janeiro	-22.9	316.8			Pnn
ESO	European Southern Obs. (3.6m)	-29.3	289.3	+ +	FEB 19 09:03 - FEB 19 09:05	Pie
AAT	Siding Spring (AAT)	-31.3	149.1			Pnn
SAAO	So. Afr. Astro. Obs. (Sutherland)	-32.4	20.8			Pnn
MSO	Mt. Stromlo Observatory	-35.3	149.0			Pnn

Titan 2048-02-19T09:07:07 K13.37 G15.31 dots 60.0 sec  
 Pt



2048-02-19T09:07:07.7200 α: 18 52 26.2379 δ: -22 15 22.213 C/A 0.377" PA 179.58 deg v\_sky +32.74 km/s D 10.69 AU  
 Credit: Styled after SORA/Lucky Star



```

target                : Titan
target radius (km)   : 2575.15
C/A epoch            : 2048-02-19T09:04:27.550
Event type           : Pt
: Titan occs: topocentric, not geocentric
: Not a ringed target
Observer code        : ESO
Location             : European Southern Obs. (3.6m)
Latitude (deg)       : -29.26097
E. Longitude (deg)   : 289.26831
Altitude (km)        : 2.400
Gaia source ID       : 4078738821071160192
2Mass ID (if available) : 18522623-2215217
ICRS Star Coord at Epoch: 18h 52m 26.23786s -22:15:22.21314s
RUWE (>1.4 is poor) : 0.93
K magnitude          : 13.372
G magnitude          : 15.312
RP magnitude         : 14.663
BP magnitude         : 15.796
DUPflag             : 0
Distance (au)        : 10.686
f0 (km)              : 0.00
g0 (km)              : 0.00
skyplane vel. (km/s) : 32.74
Sun-Target sep (deg) : 47.60
Sun-Moon sep (deg)   : 111.13
B (ring opening deg) : 25.04
PA of pole (deg)     : 6.50
Pole direction: RA (deg): 39.48270
Dec (deg): 83.42790
C/A sky separation (") : 0.110
C/A sky separation (km) : 848.8
NAIF SPICE kernels   : RAJobs_U111+rgf16.spk
URKALLv1.spk
naif0012.tls
nep097.bsp
nep101.bsp
sat4401.bsp
de440.bsp
earth_720101_070426.bpc
jup365.bsp
urall6.bsp
IAU_SATURN_for_RINGFIT.tpc
pck00010.tpc
earth_200101_990628_predict.bpc
IAU_NEPTUNE_for_RINGFIT.tpc.BECAREFUL
uranus_ringframes_rfrench20220627_v1.tf
neptune_ringframes_rfrench20220702a_v1.tf
earth_flat_IAU.spk

```

x: target alt < 5.0 deg or sun > -5.0 deg

Target	I/E	UTC	alt	alt-sun	radius	lat-geo	lat-geodetic
Titan	I	2048-02-19T09:03:12.985	27.65	-18.14	2575.1	23.33	23.34
Titan	E	2048-02-19T09:05:42.126	28.18	-17.65	2575.1	11.37	11.38

