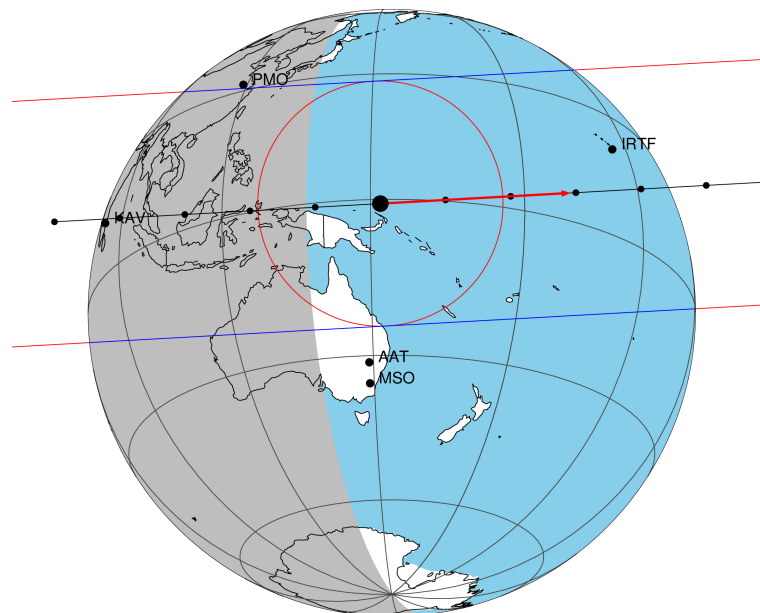


target : Titan  
 target radius (km) : 2575.15  
 C/A epoch : 2048-03-19T20:56:06.280  
 Event type : Pgt  
 : Titan occs: geocentric, topocentric  
 : Not a ringed target  
 Gaia source ID : 4081715503964972032  
 2Mass ID (if available) : 19014754-2202158

ICRS Star Coord at Epoch: 19h 01m 47.54438s -22:02:16.71557s  
 RUWE (>1.4 is poor) : 1.03  
 K magnitude : 14.928  
 G magnitude : 18.607  
 RP magnitude : 17.609  
 BP magnitude : 19.049  
 DUPflag : 0  
 Distance (au) : 10.261  
 f0 (km) : 0.00  
 g0 (km) : 0.00  
 skyplane vel. (km/s) : 22.84  
 Sun-Target sep (deg) : 74.97  
 Sun-Moon sep (deg) : 134.56  
 B (ring opening deg) : 24.58  
 PA of pole (deg) : 6.60  
 Pole direction: RA (deg): 39.48270  
 Dec (deg): 83.42790  
 C/A sky separation (") : 0.310  
 C/A sky separation (km) : 2309.9  
 NAIF SPICE kernels : RAJobs\_U111+rgf16.spk

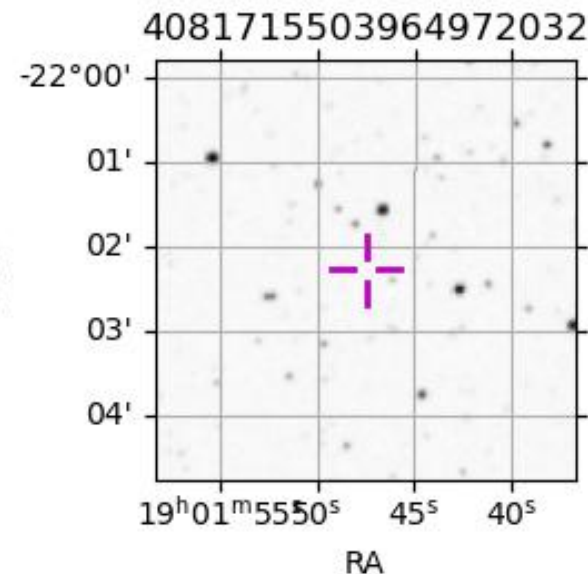
Titan 2048-03-19T20:56:06 K14.93 G18.61 dots 60.0 sec  
 Pgt



2048-03-19T20:56:06.2800 α: 19 01 47.5444 δ: -22 02 16.716 C/A 0.310" PA 356.82 deg v\_sky +22.84 km/s D 10.26 AU  
 Credit: Styled after SORA/Lucky Star

URKALLv1.spk  
 naif0012.tls  
 nep097.bsp  
 nep101.bsp  
 sat4401.bsp  
 Observable events with sun below -5 deg and altitude above 5 deg

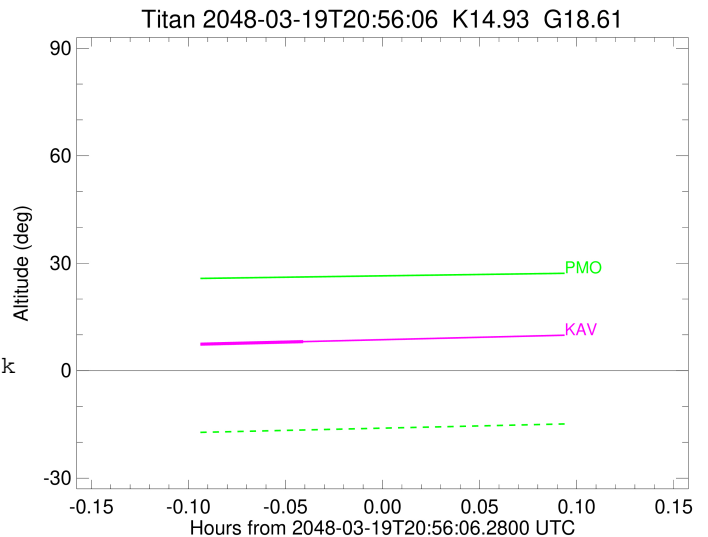
Obs	Location	lat	Elon	Target	Observed Events Interval	OEcode
PIC	Pic du Midi	42.9	0.1			Pnn
PAL	Palomar Mt (200")	33.4	243.1			Pnn
PMO	Purple Mtn Obs. Nanking	32.1	118.8			Pnn
KPNO	Kitt Peak Natl Obs	32.0	248.4			Pnn
MCD	McDonald Obs. 2.7m	30.7	256.0			Pnn
TEN	Teide Obs./Tenerife	28.3	343.5			Pnn
IRTF	Mauna Kea/IRTF	19.8	204.5			Pnn
KAV	Kavalur Observatory	12.6	78.8	+ +	MAR 19 20:49 - MAR 19 20:53	Pie
RIO	Rio de Janeiro	-22.9	316.8			Pnn
ESO	European Southern Obs. (3.6m)	-29.3	289.3			Pnn
AAT	Siding Spring (AAT)	-31.3	149.1			Pnn
SAAO	So. Afr. Astro. Obs. (Sutherland)	-32.4	20.8			Pnn
MSO	Mt. Stromlo Observatory	-35.3	149.0			Pnn



```

target                : Titan
target radius (km)   : 2575.15
C/A epoch            : 2048-03-19T20:51:46.840
Event type           : Pgt
: Titan occs: geocentric, topocentric
: Not a ringed target
Observer code        : KAV
Location             : Kavalur Observatory
Latitude (deg)       : 12.57556
E. Longitude (deg)  : 78.83167
Altitude (km)        : 0.722
Gaia source ID       : 4081715503964972032
2Mass ID (if available) : 19014754-2202158
ICRS Star Coord at Epoch: 19h 01m 47.54438s -22:02:16.71557s
RUWE (>1.4 is poor) : 1.03
K magnitude          : 14.928
G magnitude          : 18.607
RP magnitude         : 17.609
BP magnitude         : 19.049
DUPflag             : 0
Distance (au)        : 10.261
f0 (km)              : 0.00
g0 (km)              : 0.00
skyplane vel. (km/s) : 22.84
Sun-Target sep (deg) : 74.97
Sun-Moon sep (deg)  : 134.11
B (ring opening deg) : 24.58
PA of pole (deg)    : 6.60
Pole direction: RA (deg): 39.48270
Dec (deg): 83.42790
C/A sky separation (") : 0.015
C/A sky separation (km) : 113.9
NAIF SPICE kernels  : RAJobs_U111+rgf16.spk
URKALLv1.spk
naif0012.tls
nep097.bsp
nep101.bsp
sat4401.bsp
de440.bsp
earth_720101_070426.bpc
jup365.bsp
urall6.bsp
IAU_SATURN_for_RINGFIT.tpc
pck00010.tpc
earth_200101_990628_predict.bpc
IAU_NEPTUNE_for_RINGFIT.tpc.BECAREFUL
uranus_ringframes_rfrench20220627_v1.tf
neptune_ringframes_rfrench20220702a_v1.tf
earth_flat_IAU.spk

```



x: target alt < 5.0 deg or sun > -5.0 deg

Target	I/E	UTC	alt	alt-sun	radius	lat-geo	lat-geodetic
Titan	I	2048-03-19T20:49:53.654	7.26	-58.22	2575.1	6.25	6.26
Titan	E	2048-03-19T20:53:40.053	8.10	-57.36	2575.1	-10.85	-10.85