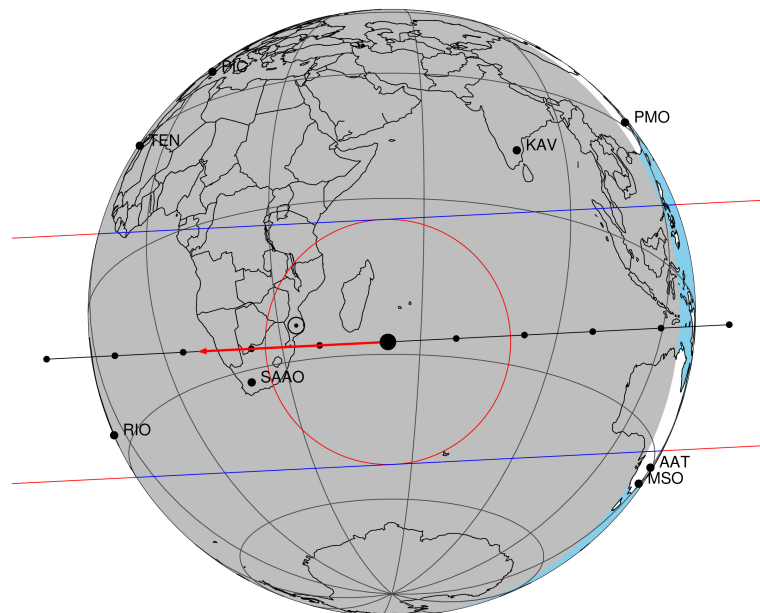


target : Titan  
 target radius (km) : 2575.15  
 C/A epoch : 2048-06-15T21:45:14.450  
 Event type : Pgt  
 : Titan occs: geocentric, topocentric  
 : Not a ringed target  
 Gaia source ID : 4081743580190679552  
 2Mass ID (if available) : 18572761-2213247

ICRS Star Coord at Epoch: 18h 57m 27.60827s -22:13:24.96210s  
 RUWE (>1.4 is poor) : 1.01  
 K magnitude : 14.184  
 G magnitude : 16.789  
 RP magnitude : 15.985  
 BP magnitude : 17.475  
 DUPflag : 0  
 Distance (au) : 9.062  
 f0 (km) : 0.00  
 g0 (km) : 0.00  
 skyplane vel. (km/s) : -23.91  
 Sun-Target sep (deg) : 161.50  
 Sun-Moon sep (deg) : 150.21  
 B (ring opening deg) : 24.88  
 PA of pole (deg) : 6.56  
 Pole direction: RA (deg): 39.48270  
 Dec (deg): 83.42790  
 C/A sky separation (") : 0.092  
 C/A sky separation (km) : 602.3  
 NAIF SPICE kernels : RAJobs\_U111+rgf16.spk

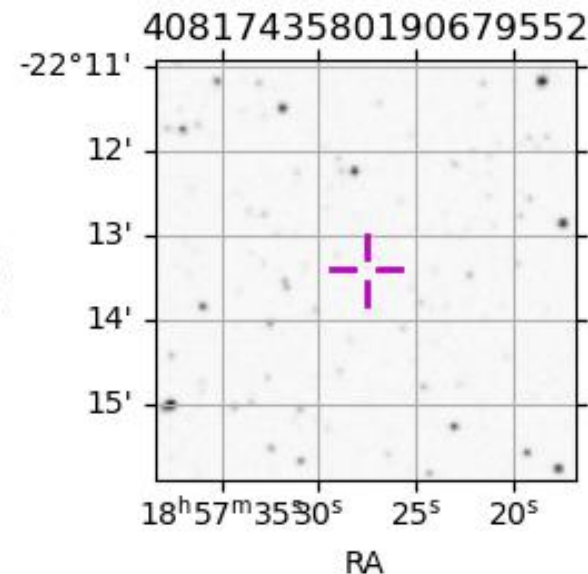
Titan 2048-06-15T21:45:14 K14.18 G16.79 dots 60.0 sec  
 Pgt



2048-06-15T21:45:14.45000 ra: 18 57 27.6083 s: -22 13 24.962 C/A 0.092" PA 177.11 deg v\_sky -23.92 km/s D 09.06 AU  
 Credit: Styled after SORA/Lucky Star

Observable events with sun below -5 deg and altitude above 5 deg

Obs	Location	lat	Elon	Target	Observed Events Interval	OEcode
PIC	Pic du Midi	42.9	0.1			Pnn
PAL	Palomar Mt (200")	33.4	243.1			Pnn
PMO	Purple Mtn Obs. Nanking	32.1	118.8			Pnn
KPNO	Kitt Peak Natl Obs	32.0	248.4			Pnn
MCD	McDonald Obs. 2.7m	30.7	256.0			Pnn
TEN	Teide Obs./Tenerife	28.3	343.5			Pnn
IRTF	Mauna Kea/IRTF	19.8	204.5			Pnn
KAV	Kavalur Observatory	12.6	78.8			Pnn
RIO	Rio de Janeiro	-22.9	316.8			Pnn
ESO	European Southern Obs. (3.6m)	-29.3	289.3			Pnn
AAT	Siding Spring (AAT)	-31.3	149.1			Pnn
SAAO	So. Afr. Astro. Obs. (Sutherland)	-32.4	20.8	+ +	JUN 15 21:45 - JUN 15 21:49	Pie
MSO	Mt. Stromlo Observatory	-35.3	149.0			Pnn



```

target                : Titan
target radius (km)   : 2575.15
C/A epoch             : 2048-06-15T21:47:19.040
Event type            : Pgt
: Titan occs: geocentric, topocentric
: Not a ringed target
Observer code         : SAAO
Location              : So. Afr. Astro. Obs. (Sutherland)
Latitude (deg)        : -32.37953
E. Longitude (deg)    : 20.81070
Altitude (km)         : 1.768
Gaia source ID        : 4081743580190679552
2Mass ID (if available) : 18572761-2213247
ICRS Star Coord at Epoch: 18h 57m 27.60827s -22:13:24.96210s
RUWE (>1.4 is poor)  : 1.01
K magnitude           : 14.184
G magnitude           : 16.789
RP magnitude          : 15.985
BP magnitude          : 17.475
DUPflag              : 0
Distance (au)         : 9.062
f0 (km)               : 0.00
g0 (km)               : 0.00
skyplane vel. (km/s) : -23.91
Sun-Target sep (deg)  : 161.50
Sun-Moon sep (deg)    : 150.99
B (ring opening deg) : 24.88
PA of pole (deg)      : 6.56
Pole direction: RA (deg): 39.48270
Dec (deg): 83.42790
C/A sky separation (") : 0.101
C/A sky separation (km) : 667.0
NAIF SPICE kernels    : RAJobs_U111+rgf16.spk
URKALLv1.spk
naif0012.tls
nep097.bsp
nep101.bsp
sat4401.bsp
de440.bsp
earth_720101_070426.bpc
jup365.bsp
urall6.bsp
IAU_SATURN_for_RINGFIT.tpc
pck00010.tpc
earth_200101_990628_predict.bpc
IAU_NEPTUNE_for_RINGFIT.tpc.BECAREFUL
uranus_ringframes_rfrench20220627_v1.tf
neptune_ringframes_rfrench20220702a_v1.tf
earth_flat_IAU.spk

```

x: target alt < 5.0 deg or sun > -5.0 deg

Target	I/E	UTC	alt	alt-sun	radius	lat-geo	lat-geodetic
Titan	I	2048-06-15T21:45:36.483	59.12	-75.54	2575.1	-22.20	-22.21
Titan	E	2048-06-15T21:49:01.585	59.83	-76.12	2575.2	-4.91	-4.92

