

target : Titan
 target radius (km) : 2575.15
 C/A epoch : 2048-07-07T15:02:54.520
 Event type : Pgt
 : Titan occs: geocentric, topocentric
 : Not a ringed target
 Gaia source ID : 4078686727391038464
 2Mass ID (if available) : 18503688-2221268

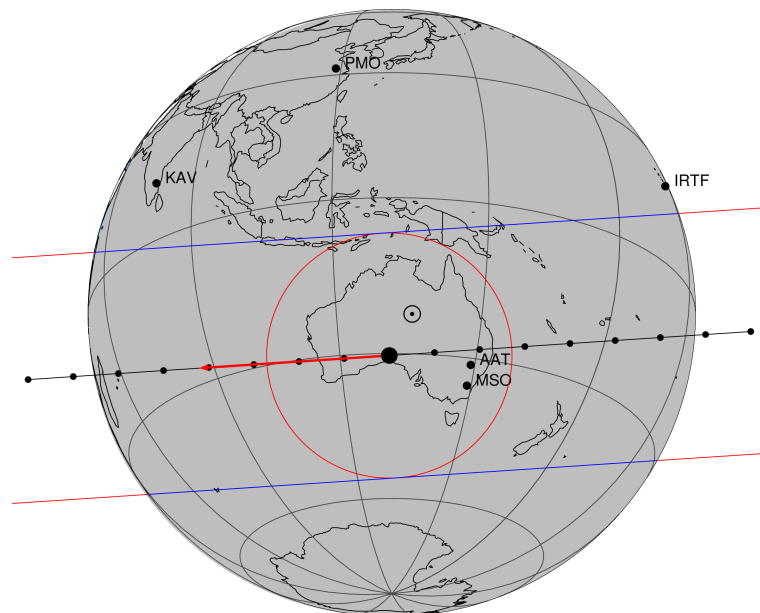
Titan 2048-07-07T15:02:54 K14.95 G18.59 dots 60.0 sec
 Pgt

ICRS Star Coord at Epoch: 18h 50m 36.87687s -22:21:27.02026s
 RUWE (>1.4 is poor) : 0.98
 K magnitude : 14.947
 G magnitude : 18.590
 RP magnitude : 17.553
 BP magnitude : 19.376
 DUPflag : 0
 Distance (au) : 9.027
 f0 (km) : 0.00
 g0 (km) : 0.00
 skyplane vel. (km/s) : -15.84
 Sun-Target sep (deg) : 176.15
 Sun-Moon sep (deg) : 145.11
 B (ring opening deg) : 25.19
 PA of pole (deg) : 6.48
 Pole direction: RA (deg): 39.48270
 Dec (deg): 83.42790
 C/A sky separation (") : 0.136
 C/A sky separation (km) : 889.7
 NAIF SPICE kernels : RAJobs_U111+rgf16.spk

URKALLv1.spk
 naif0012.tls
 nep097.bsp
 nep101.bsp
 sat4401.bsp

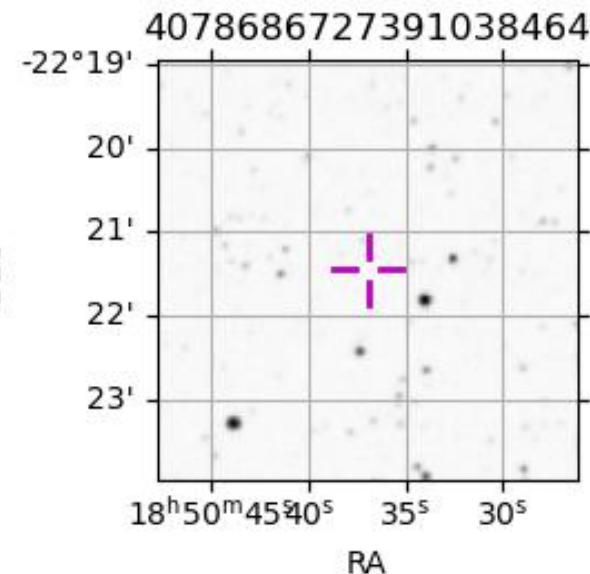
Observable events with sun below -5 deg and altitude above 5 deg

Obs	Location	lat	Elon	Target	Observed Events Interval	OCode
PIC	Pic du Midi	42.9	0.1			Pnn
PAL	Palomar Mt (200")	33.4	243.1			Pnn
PMO	Purple Mtn Obs. Nanking	32.1	118.8			Pnn
KPNO	Kitt Peak Natl Obs	32.0	248.4			Pnn
MCD	McDonald Obs. 2.7m	30.7	256.0			Pnn
TEN	Teide Obs./Tenerife	28.3	343.5			Pnn
IRTF	Mauna Kea/IRTF	19.8	204.5			Pnn
KAV	Kavalur Observatory	12.6	78.8			Pnn
RIO	Rio de Janeiro	-22.9	316.8			Pnn
ESO	European Southern Obs. (3.6m)	-29.3	289.3			Pnn
AAT	Siding Spring (AAT)	-31.3	149.1	+ +	JUL 07 14:58 - JUL 07 15:03	Pie
SAAO	So. Afr. Astro. Obs. (Sutherland)	-32.4	20.8			Pnn
MSO	Mt. Stromlo Observatory	-35.3	149.0	+ +	JUL 07 14:58 - JUL 07 15:03	Pie



2048-07-07T15:02:54.5200 cc: 18 50 36.8769 d: -22 21 27.020 C/A 0.136" PA 176.20 deg v_sky -15.84 km/s D 09.03 AU

Credit: Styled after SORA/Lucky Star



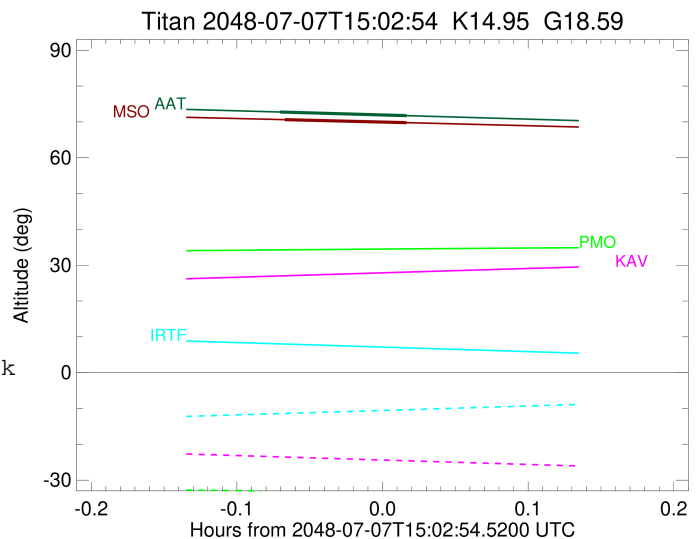
```

target                : Titan
target radius (km)   : 2575.15
C/A epoch            : 2048-07-07T15:01:17.140
Event type          : Pgt
: Titan occs: geocentric, topocentric
: Not a ringed target
Observer code       : AAT
Location            : Siding Spring (AAT)
Latitude (deg)      : -31.27703
E. Longitude (deg)  : 149.06608
Altitude (km)       : 1.164
Gaia source ID      : 4078686727391038464
2Mass ID (if available) : 18503688-2221268
ICRS Star Coord at Epoch: 18h 50m 36.87687s -22:21:27.02026s
RUWE (>1.4 is poor) : 0.98
K magnitude          : 14.947
G magnitude          : 18.590
RP magnitude         : 17.553
BP magnitude         : 19.376
DUPflag             : 0
Distance (au)       : 9.027
f0 (km)             : 0.00
g0 (km)             : 0.00
skyplane vel. (km/s) : -15.84
Sun-Target sep (deg) : 176.15
Sun-Moon sep (deg)  : 145.76
B (ring opening deg) : 25.19
PA of pole (deg)    : 6.48
Pole direction: RA (deg): 39.48270
Dec (deg): 83.42790
C/A sky separation (") : 0.045
C/A sky separation (km) : 293.4
NAIF SPICE kernels  : RAJobs_U111+rgf16.spk
URKALLv1.spk
naif0012.tls
nep097.bsp
nep101.bsp
sat4401.bsp
de440.bsp
earth_720101_070426.bpc
jup365.bsp
urall6.bsp
IAU_SATURN_for_RINGFIT.tpc
pck00010.tpc
earth_200101_990628_predict.bpc
IAU_NEPTUNE_for_RINGFIT.tpc.BECAREFUL
uranus_ringframes_rfrench20220627_v1.tf
neptune_ringframes_rfrench20220702a_v1.tf
earth_flat_IAU.spk

```

x: target alt < 5.0 deg or sun > -5.0 deg

Target	I/E	UTC	alt	alt-sun	radius	lat-geo	lat-geodetic
Titan	I	2048-07-07T14:58:39.399	72.76	-75.92	2575.1	-14.95	-14.96
Titan	E	2048-07-07T15:03:54.912	71.74	-74.97	2575.2	3.16	3.16



```

target                : Titan
target radius (km)   : 2575.15
C/A epoch             : 2048-07-07T15:01:23.760
Event type            : Pgt
: Titan occs: geocentric, topocentric
: Not a ringed target
Observer code         : MSO
Location              : Mt. Stromlo Observatory
Latitude (deg)       : -35.32000
E. Longitude (deg)   : 149.00833
Altitude (km)        : 0.770
Gaia source ID       : 4078686727391038464
2Mass ID (if available) : 18503688-2221268
ICRS Star Coord at Epoch: 18h 50m 36.87687s -22:21:27.02026s
RUWE (>1.4 is poor) : 0.98
K magnitude           : 14.947
G magnitude           : 18.590
RP magnitude          : 17.553
BP magnitude          : 19.376
DUPflag              : 0
Distance (au)        : 9.027
f0 (km)              : 0.00
g0 (km)              : 0.00
skyplane vel. (km/s) : -15.84
Sun-Target sep (deg) : 176.15
Sun-Moon sep (deg)   : 145.74
B (ring opening deg) : 25.19
PA of pole (deg)     : 6.48
Pole direction: RA (deg): 39.48270
Dec (deg): 83.42790
C/A sky separation (") : 0.110
C/A sky separation (km) : 722.3
NAIF SPICE kernels   : RAJobs_U111+rgf16.spk
URKALLv1.spk
naif0012.tls
nep097.bsp
nep101.bsp
sat4401.bsp
de440.bsp
earth_720101_070426.bpc
jup365.bsp
urall6.bsp
IAU_SATURN_for_RINGFIT.tpc
pck00010.tpc
earth_200101_990628_predict.bpc
IAU_NEPTUNE_for_RINGFIT.tpc.BECAREFUL
uranus_ringframes_rfrench20220627_v1.tf
neptune_ringframes_rfrench20220702a_v1.tf
earth_flat_IAU.spk

```

x: target alt < 5.0 deg or sun > -5.0 deg

Target	I/E	UTC	alt	alt-sun	radius	lat-geo	lat-geodetic
Titan	I	2048-07-07T14:58:51.204	70.62	-73.29	2575.1	-23.66	-23.67
Titan	E	2048-07-07T15:03:56.359	69.78	-72.55	2575.2	-5.65	-5.65

