

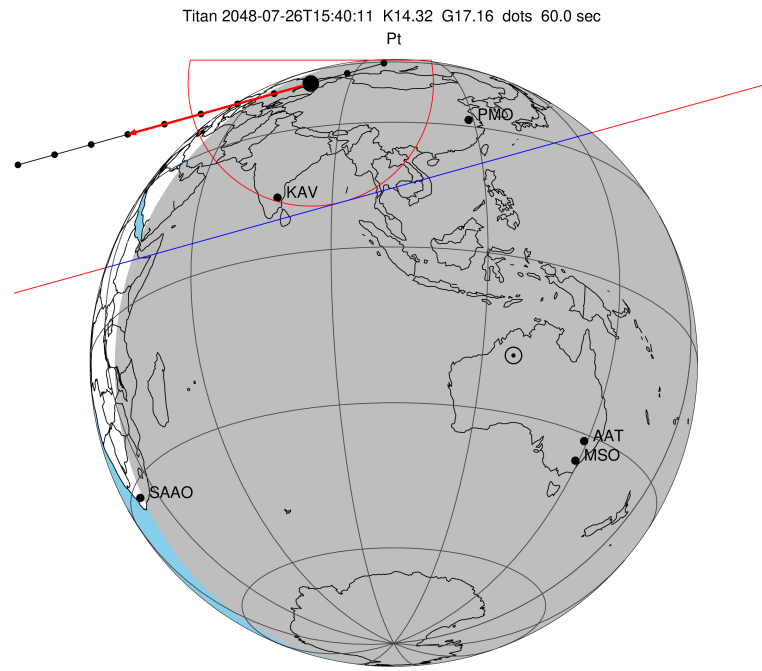
target : Titan
 target radius (km) : 2575.15
 C/A epoch : 2048-07-26T15:40:11.450
 Event type : Pt
 : Titan occs: topocentric, not geocentric
 : Not a ringed target
 Gaia source ID : 4078540835939676288
 2Mass ID (if available) : 18450744-2230091

ICRS Star Coord at Epoch: 18h 45m 07.42917s -22:30:09.25204s
 RUWE (>1.4 is poor) : 0.82
 K magnitude : 14.325
 G magnitude : 17.163
 RP magnitude : 16.214
 BP magnitude : 17.872
 DUPflag : 0
 Distance (au) : 9.101
 f0 (km) : 0.00
 g0 (km) : 0.00
 skyplane vel. (km/s) : -13.30
 Sun-Target sep (deg) : 156.75
 Sun-Moon sep (deg) : 40.44
 B (ring opening deg) : 25.48
 PA of pole (deg) : 6.42
 Pole direction: RA (deg): 39.48270
 Dec (deg): 83.42790
 C/A sky separation (") : 0.924
 C/A sky separation (km) : 6099.4
 NAIF SPICE kernels : RAJobs_U111+rgf16.spk

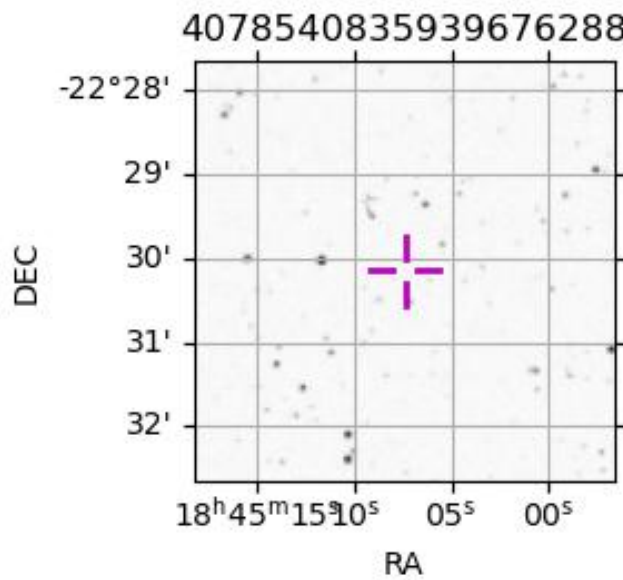
URKALLv1.spk
 naif0012.tls
 nep097.bsp
 nep101.bsp
 sat4401.bsp

Observable events with sun below -5 deg and altitude above 5 deg

Obs	Location	lat	Elon	Target	Observed Events Interval	OCode
PIC	Pic du Midi	42.9	0.1			Pnn
PAL	Palomar Mt (200")	33.4	243.1			Pnn
PMO	Purple Mtn Obs. Nanking	32.1	118.8	+ +	JUL 26 15:34 - JUL 26 15:39	Pie
KPNO	Kitt Peak Natl Obs	32.0	248.4			Pnn
MCD	McDonald Obs. 2.7m	30.7	256.0			Pnn
TEN	Teide Obs./Tenerife	28.3	343.5			Pnn
IRTF	Mauna Kea/IRTF	19.8	204.5			Pnn
KAV	Kavalur Observatory	12.6	78.8	+ +	JUL 26 15:40 - JUL 26 15:43	Pie
RIO	Rio de Janeiro	-22.9	316.8			Pnn
ESO	European Southern Obs. (3.6m)	-29.3	289.3			Pnn
AAT	Siding Spring (AAT)	-31.3	149.1			Pnn
SAAO	So. Afr. Astro. Obs. (Sutherland)	-32.4	20.8			Pnn
MSO	Mt. Stromlo Observatory	-35.3	149.0			Pnn



2048-07-26T15:40:11.4500 cc: 18 45 07.4292 d: -22 30 09.252 C/A 0.927" PA 344.47 deg v_sky -13.29 km/s D 09.10 AU
 Credit: Styled after SORA/Lucky Star



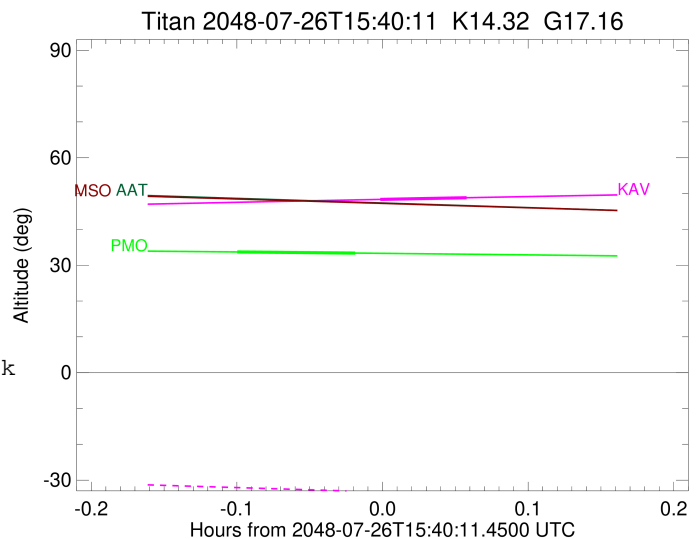
```

target                : Titan
target radius (km)   : 2575.15
C/A epoch             : 2048-07-26T15:36:37.590
Event type           : Pt
: Titan occs: topocentric, not geocentric
: Not a ringed target
Observer code        : PMO
Location             : Purple Mtn Obs. Nanking
Latitude (deg)       : 32.06667
E. Longitude (deg)   : 118.82089
Altitude (km)        : 0.364
Gaia source ID       : 4078540835939676288
2Mass ID (if available) : 18450744-2230091
ICRS Star Coord at Epoch: 18h 45m 07.42917s -22:30:09.25204s
RUWE (>1.4 is poor) : 0.82
K magnitude           : 14.325
G magnitude           : 17.163
RP magnitude          : 16.214
BP magnitude          : 17.872
DUPflag              : 0
Distance (au)        : 9.101
f0 (km)              : 0.00
g0 (km)              : 0.00
skyplane vel. (km/s) : -13.30
Sun-Target sep (deg) : 156.75
Sun-Moon sep (deg)   : 40.51
B (ring opening deg) : 25.48
PA of pole (deg)     : 6.42
Pole direction: RA (deg): 39.48270
Dec (deg): 83.42790
C/A sky separation (") : 0.243
C/A sky separation (km) : 1601.6
NAIF SPICE kernels   : RAJobs_U111+rgf16.spk
URKALLv1.spk
naif0012.tls
nep097.bsp
nep101.bsp
sat4401.bsp
de440.bsp
earth_720101_070426.bpc
jup365.bsp
urall6.bsp
IAU_SATURN_for_RINGFIT.tpc
pck00010.tpc
earth_200101_990628_predict.bpc
IAU_NEPTUNE_for_RINGFIT.tpc.BECAREFUL
uranus_ringframes_rfrench20220627_v1.tf
neptune_ringframes_rfrench20220702a_v1.tf
earth_flat_IAU.spk

```

x: target alt < 5.0 deg or sun > -5.0 deg

Target	I/E	UTC	alt	alt-sun	radius	lat-geo	lat-geodetic
Titan	I	2048-07-26T15:34:09.775	33.70	-38.17	2575.1	-51.28	-51.30
Titan	E	2048-07-26T15:39:05.410	33.38	-38.36	2575.2	-15.41	-15.41



```

target                : Titan
target radius (km)   : 2575.15
C/A epoch            : 2048-07-26T15:41:53.430
Event type           : Pt
: Titan occs: topocentric, not geocentric
: Not a ringed target
Observer code        : KAV
Location             : Kavalur Observatory
Latitude (deg)       : 12.57556
E. Longitude (deg)   : 78.83167
Altitude (km)        : 0.722
Gaia source ID       : 4078540835939676288
2Mass ID (if available) : 18450744-2230091
ICRS Star Coord at Epoch: 18h 45m 07.42917s -22:30:09.25204s
RUWE (>1.4 is poor) : 0.82
K magnitude          : 14.325
G magnitude          : 17.163
RP magnitude         : 16.214
BP magnitude         : 17.872
DUPflag             : 0
Distance (au)        : 9.101
f0 (km)              : 0.00
g0 (km)              : 0.00
skyplane vel. (km/s) : -13.30
Sun-Target sep (deg) : 156.75
Sun-Moon sep (deg)   : 41.14
B (ring opening deg) : 25.48
PA of pole (deg)     : 6.42
Pole direction: RA (deg): 39.48270
Dec (deg): 83.42790
C/A sky separation ("): 0.319
C/A sky separation (km): 2107.3
NAIF SPICE kernels   : RAJobs_U111+rgf16.spk
URKALLv1.spk
naif0012.tls
nep097.bsp
nep101.bsp
sat4401.bsp
de440.bsp
earth_720101_070426.bpc
jup365.bsp
urall6.bsp
IAU_SATURN_for_RINGFIT.tpc
pck00010.tpc
earth_200101_990628_predict.bpc
IAU_NEPTUNE_for_RINGFIT.tpc.BECAREFUL
uranus_ringframes_rfrench20220627_v1.tf
neptune_ringframes_rfrench20220702a_v1.tf
earth_flat_IAU.spk

```

x: target alt < 5.0 deg or sun > -5.0 deg

Target	I/E	UTC	alt	alt-sun	radius	lat-geo	lat-geodetic
Titan	I	2048-07-26T15:40:05.497	48.36	-33.29	2575.0	-61.45	-61.46
Titan	E	2048-07-26T15:43:41.350	48.83	-34.02	2575.2	-29.60	-29.62

