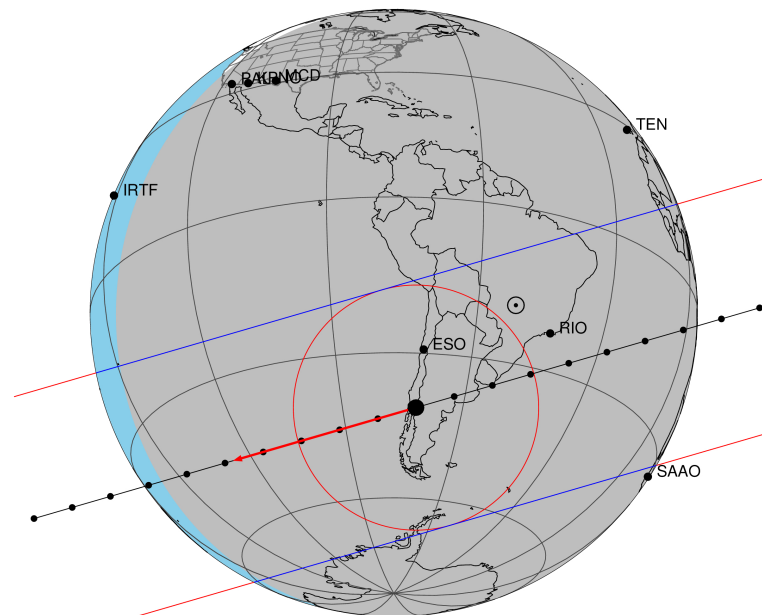


target : Titan  
 target radius (km) : 2575.15  
 C/A epoch : 2048-07-27T03:34:37.550  
 Event type : Pgt  
 : Titan occs: geocentric, topocentric  
 : Not a ringed target  
 Gaia source ID : 4078540870305105408  
 2Mass ID (if available) : 18450128-2230316

ICRS Star Coord at Epoch: 18h 45m 01.28158s -22:30:32.26446s  
 RUWE (>1.4 is poor) : 1.05  
 K magnitude : 14.938  
 G magnitude : 18.028  
 RP magnitude : 17.289  
 BP magnitude : 18.488  
 DUPflag : 0  
 Distance (au) : 9.103  
 f0 (km) : 0.00  
 g0 (km) : 0.00  
 skyplane vel. (km/s) : -13.92  
 Sun-Target sep (deg) : 156.26  
 Sun-Moon sep (deg) : 47.55  
 B (ring opening deg) : 25.49  
 PA of pole (deg) : 6.41  
 Pole direction: RA (deg): 39.48270  
 Dec (deg): 83.42790  
 C/A sky separation (") : 0.313  
 C/A sky separation (km) : 2065.3  
 NAIF SPICE kernels : RAJobs\_U111+rgf16.spk

Titan 2048-07-27T03:34:37 K14.94 G18.03 dots 60.0 sec  
 Pgt

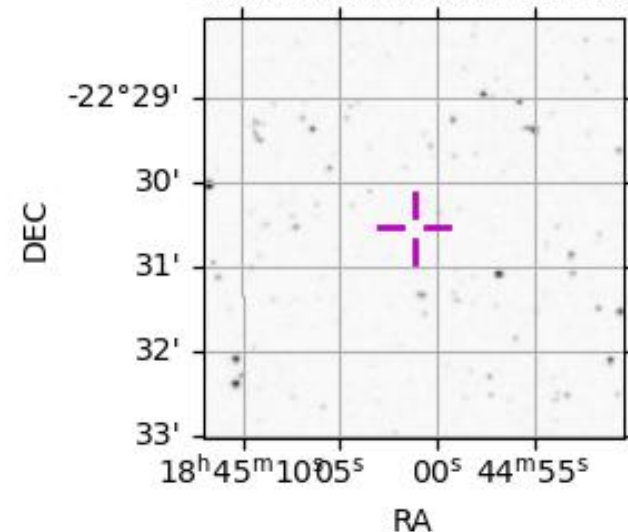


2048-07-27T03:34:37.5500 cc: 18 45 01.2816 d: -22 30 32.264 C/A 0.309" PA 163.81 deg v\_sky -13.92 km/s D 09.10 AU  
 Credit: Styled after SORA/Lucky Star

Observable events with sun below -5 deg and altitude above 5 deg

Obs	Location	lat	Elon	Target	Observed Events Interval	OCode
PIC	Pic du Midi	42.9	0.1			Pnn
PAL	Palomar Mt (200")	33.4	243.1			Pnn
PMO	Purple Mtn Obs. Nanking	32.1	118.8			Pnn
KPNO	Kitt Peak Natl Obs	32.0	248.4			Pnn
MCD	McDonald Obs. 2.7m	30.7	256.0			Pnn
TEN	Teide Obs./Tenerife	28.3	343.5			Pnn
IRTF	Mauna Kea/IRTF	19.8	204.5			Pnn
KAV	Kavalur Observatory	12.6	78.8			Pnn
RIO	Rio de Janeiro	-22.9	316.8	+ +	JUL 27 03:28 - JUL 27 03:33	Pie
ESO	European Southern Obs. (3.6m)	-29.3	289.3	+ +	JUL 27 03:31 - JUL 27 03:36	Pie
AAT	Siding Spring (AAT)	-31.3	149.1			Pnn
SAAO	So. Afr. Astro. Obs. (Sutherland)	-32.4	20.8			Pnn
MSO	Mt. Stromlo Observatory	-35.3	149.0			Pnn

4078540870305105408



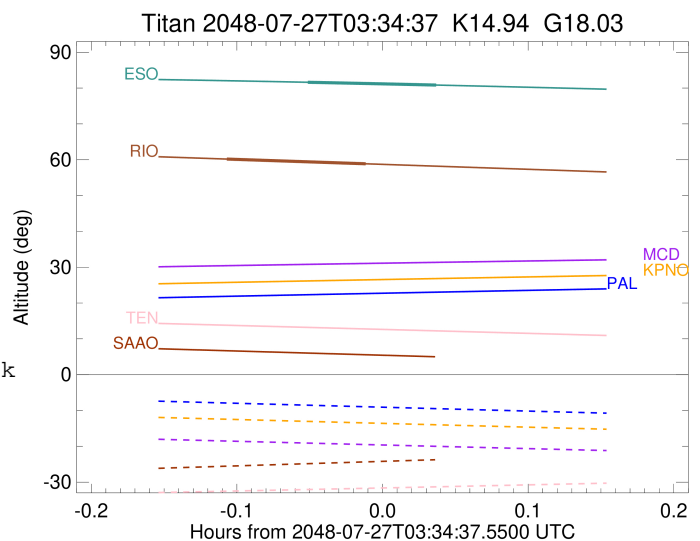
```

target                : Titan
target radius (km)   : 2575.15
C/A epoch             : 2048-07-27T03:31:05.250
Event type            : Pgt
: Titan occs: geocentric, topocentric
: Not a ringed target
Observer code         : RIO
Location              : Rio de Janeiro
Latitude (deg)        : -22.89506
E. Longitude (deg)    : 316.77708
Altitude (km)         : 0.033
Gaia source ID        : 4078540870305105408
2Mass ID (if available) : 18450128-2230316
ICRS Star Coord at Epoch: 18h 45m 01.28158s -22:30:32.26446s
RUWE (>1.4 is poor)  : 1.05
K magnitude           : 14.938
G magnitude           : 18.028
RP magnitude          : 17.289
BP magnitude          : 18.488
DUPflag              : 0
Distance (au)         : 9.103
f0 (km)               : 0.00
g0 (km)               : 0.00
skyplane vel. (km/s) : -13.92
Sun-Target sep (deg)  : 156.26
Sun-Moon sep (deg)    : 47.85
B (ring opening deg)  : 25.49
PA of pole (deg)      : 6.41
Pole direction: RA (deg): 39.48270
Dec (deg): 83.42790
C/A sky separation (") : 0.117
C/A sky separation (km) : 772.9
NAIF SPICE kernels    : RAJobs_U111+rgf16.spk
URKALLv1.spk
naif0012.tls
nep097.bsp
nep101.bsp
sat4401.bsp
de440.bsp
earth_720101_070426.bpc
jup365.bsp
urall6.bsp
IAU_SATURN_for_RINGFIT.tpc
pck00010.tpc
earth_200101_990628_predict.bpc
IAU_NEPTUNE_for_RINGFIT.tpc.BECAREFUL
uranus_ringframes_rfrench20220627_v1.tf
neptune_ringframes_rfrench20220702a_v1.tf
earth_flat_IAU.spk

```

x: target alt < 5.0 deg or sun > -5.0 deg

Target	I/E	UTC	alt	alt-sun	radius	lat-geo	lat-geodetic
Titan	I	2048-07-27T03:28:12.664	60.18	-82.32	2575.1	-3.97	-3.97
Titan	E	2048-07-27T03:33:57.842	58.85	-81.12	2575.1	34.89	34.91



```

target                : Titan
target radius (km)   : 2575.15
C/A epoch            : 2048-07-27T03:34:11.150
Event type           : Pgt
: Titan occs: geocentric, topocentric
: Not a ringed target
Observer code        : ESO
Location             : European Southern Obs. (3.6m)
Latitude (deg)       : -29.26097
E. Longitude (deg)   : 289.26831
Altitude (km)        : 2.400
Gaia source ID       : 4078540870305105408
2Mass ID (if available) : 18450128-2230316
ICRS Star Coord at Epoch: 18h 45m 01.28158s -22:30:32.26446s
RUWE (>1.4 is poor) : 1.05
K magnitude          : 14.938
G magnitude          : 18.028
RP magnitude         : 17.289
BP magnitude         : 18.488
DUPflag             : 0
Distance (au)        : 9.103
f0 (km)              : 0.00
g0 (km)              : 0.00
skyplane vel. (km/s) : -13.92
Sun-Target sep (deg) : 156.26
Sun-Moon sep (deg)   : 48.23
B (ring opening deg) : 25.49
PA of pole (deg)     : 6.41
Pole direction: RA (deg): 39.48270
Dec (deg): 83.42790
C/A sky separation ("): 0.177
C/A sky separation (km): 1170.6
NAIF SPICE kernels   : RAJobs_U111+rgf16.spk
URKALLv1.spk
naif0012.tls
nep097.bsp
nep101.bsp
sat4401.bsp
de440.bsp
earth_720101_070426.bpc
jup365.bsp
urall6.bsp
IAU_SATURN_for_RINGFIT.tpc
pck00010.tpc
earth_200101_990628_predict.bpc
IAU_NEPTUNE_for_RINGFIT.tpc.BECAREFUL
uranus_ringframes_rfrench20220627_v1.tf
neptune_ringframes_rfrench20220702a_v1.tf
earth_flat_IAU.spk

```

x: target alt < 5.0 deg or sun > -5.0 deg

Target	I/E	UTC	alt	alt-sun	radius	lat-geo	lat-geodetic
Titan	I	2048-07-27T03:31:30.719	81.61	-69.63	2575.2	4.46	4.46
Titan	E	2048-07-27T03:36:51.556	80.83	-70.68	2575.1	43.04	43.06

