

target : Titan
 target radius (km) : 2575.15
 C/A epoch : 2048-10-15T00:12:08.590
 Event type : Pgt
 : Titan occs: geocentric, topocentric
 : Not a ringed target
 Gaia source ID : 4079181060986588032
 2Mass ID (if available) : 18412783-2243444

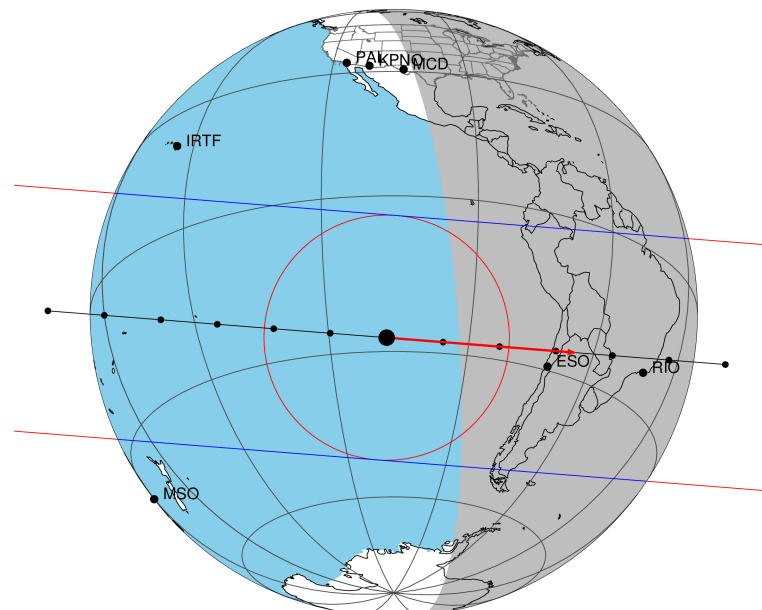
ICRS Star Coord at Epoch: 18h 41m 27.84594s -22:43:44.91911s
 RUWE (>1.4 is poor) : 1.14
 K magnitude : 14.487
 G magnitude : 17.305
 RP magnitude : 16.359
 BP magnitude : 17.900
 DUPflag : 0
 Distance (au) : 10.197
 f0 (km) : 0.00
 g0 (km) : 0.00
 skyplane vel. (km/s) : 19.81
 Sun-Target sep (deg) : 77.91
 Sun-Moon sep (deg) : 18.72
 B (ring opening deg) : 25.80
 PA of pole (deg) : 6.38
 Pole direction: RA (deg): 39.48270
 Dec (deg): 83.42790
 C/A sky separation (") : 0.070
 C/A sky separation (km) : 516.5
 NAIF SPICE kernels : RAJobs_U111+rgf16.spk

URKALLv1.spk
 naif0012.tls
 nep097.bsp
 nep101.bsp
 sat4401.bsp

Observable events with sun below -5 deg and altitude above 5 deg

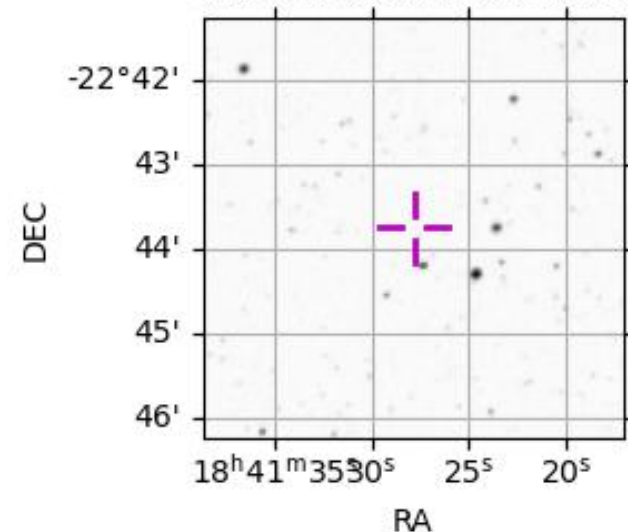
Obs	Location	lat	Elon	Target	Observed Events Interval	OEcode
PIC	Pic du Midi	42.9	0.1			Pnn
PAL	Palomar Mt (200")	33.4	243.1			Pnn
PMO	Purple Mtn Obs. Nanking	32.1	118.8			Pnn
KPNO	Kitt Peak Natl Obs	32.0	248.4			Pnn
MCD	McDonald Obs. 2.7m	30.7	256.0			Pnn
TEN	Teide Obs./Tenerife	28.3	343.5			Pnn
IRTF	Mauna Kea/IRTF	19.8	204.5			Pnn
KAV	Kavalur Observatory	12.6	78.8			Pnn
RIO	Rio de Janeiro	-22.9	316.8	+ +	OCT 15 00:14 - OCT 15 00:18	Pie
ESO	European Southern Obs. (3.6m)	-29.3	289.3	+ +	OCT 15 00:12 - OCT 15 00:17	Pie
AAT	Siding Spring (AAT)	-31.3	149.1			Pnn
SAAO	So. Afr. Astro. Obs. (Sutherland)	-32.4	20.8			Pnn
MSO	Mt. Stromlo Observatory	-35.3	149.0			Pnn

Titan 2048-10-15T00:12:08 K14.49 G17.31 dots 60.0 sec
 Pgt



2048-10-15T00:12:08.5900 α: 18 41 27.8459 δ: -22 43 44.919 C/A 0.072" PA 184.56 deg v_sky +19.82 km/s D 10.20 AU
 Credit: Styled after SORA/Lucky Star

4079181060986588032



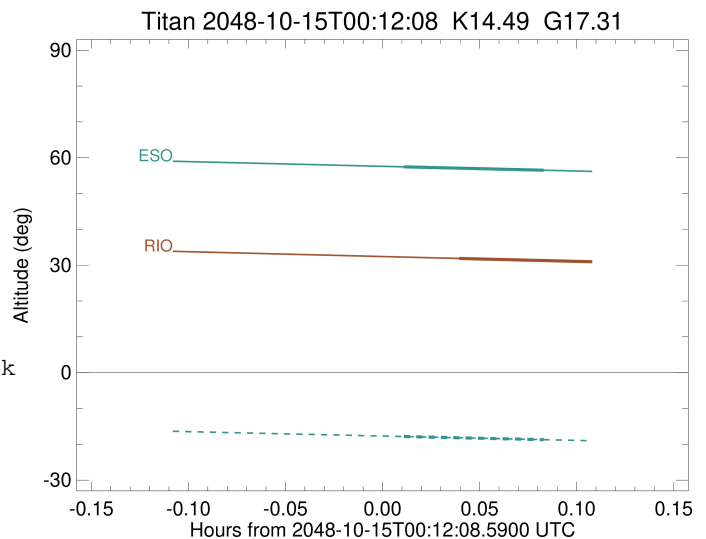
```

target                : Titan
target radius (km)   : 2575.15
C/A epoch             : 2048-10-15T00:16:39.350
Event type            : Pgt
: Titan occs: geocentric, topocentric
: Not a ringed target
Observer code         : RIO
Location              : Rio de Janeiro
Latitude (deg)        : -22.89506
E. Longitude (deg)   : 316.77708
Altitude (km)         : 0.033
Gaia source ID        : 4079181060986588032
2Mass ID (if available) : 18412783-2243444
ICRS Star Coord at Epoch: 18h 41m 27.84594s -22:43:44.91911s
RUWE (>1.4 is poor)  : 1.14
K magnitude           : 14.487
G magnitude           : 17.305
RP magnitude          : 16.359
BP magnitude          : 17.900
DUPflag              : 0
Distance (au)         : 10.197
f0 (km)               : 0.00
g0 (km)               : 0.00
skyplane vel. (km/s) : 19.81
Sun-Target sep (deg) : 77.91
Sun-Moon sep (deg)   : 18.18
B (ring opening deg) : 25.80
PA of pole (deg)     : 6.38
Pole direction: RA (deg): 39.48270
Dec (deg): 83.42790
C/A sky separation (") : 0.051
C/A sky separation (km) : 373.7
NAIF SPICE kernels   : RAJobs_U111+rgf16.spk
URKALLv1.spk
naif0012.tls
nep097.bsp
nep101.bsp
sat4401.bsp
de440.bsp
earth_720101_070426.bpc
jup365.bsp
urall6.bsp
IAU_SATURN_for_RINGFIT.tpc
pck00010.tpc
earth_200101_990628_predict.bpc
IAU_NEPTUNE_for_RINGFIT.tpc.BECAREFUL
uranus_ringframes_rfrench20220627_v1.tf
neptune_ringframes_rfrench20220702a_v1.tf
earth_flat_IAU.spk

```

x: target alt < 5.0 deg or sun > -5.0 deg

Target	I/E	UTC	alt	alt-sun	radius	lat-geo	lat-geodetic
Titan	I	2048-10-15T00:14:29.461	31.89	-42.77	2575.1	-5.50	-5.50
Titan	E	2048-10-15T00:18:49.222	30.91	-43.55	2575.1	-9.51	-9.51



```

target                : Titan
target radius (km)   : 2575.15
C/A epoch             : 2048-10-15T00:14:58.110
Event type           : Pgt
: Titan occs: geocentric, topocentric
: Not a ringed target
Observer code        : ESO
Location             : European Southern Obs. (3.6m)
Latitude (deg)       : -29.26097
E. Longitude (deg)   : 289.26831
Altitude (km)        : 2.400
Gaia source ID       : 4079181060986588032
2Mass ID (if available) : 18412783-2243444
ICRS Star Coord at Epoch: 18h 41m 27.84594s -22:43:44.91911s
RUWE (>1.4 is poor) : 1.14
K magnitude          : 14.487
G magnitude          : 17.305
RP magnitude         : 16.359
BP magnitude         : 17.900
DUPflag             : 0
Distance (au)        : 10.197
f0 (km)              : 0.00
g0 (km)              : 0.00
skyplane vel. (km/s) : 19.81
Sun-Target sep (deg) : 77.91
Sun-Moon sep (deg)   : 18.56
B (ring opening deg) : 25.80
PA of pole (deg)     : 6.38
Pole direction: RA (deg): 39.48270
Dec (deg): 83.42790
C/A sky separation (") : 0.049
C/A sky separation (km) : 363.6
NAIF SPICE kernels   : RAJobs_U111+rgf16.spk
URKALLv1.spk
naif0012.tls
nep097.bsp
nep101.bsp
sat4401.bsp
de440.bsp
earth_720101_070426.bpc
jup365.bsp
urall6.bsp
IAU_SATURN_for_RINGFIT.tpc
pck00010.tpc
earth_200101_990628_predict.bpc
IAU_NEPTUNE_for_RINGFIT.tpc.BECAREFUL
uranus_ringframes_rfrench20220627_v1.tf
neptune_ringframes_rfrench20220702a_v1.tf
earth_flat_IAU.spk

```

x: target alt < 5.0 deg or sun > -5.0 deg

Target	I/E	UTC	alt	alt-sun	radius	lat-geo	lat-geodetic
Titan	I	2048-10-15T00:12:47.256	57.46	-17.82	2575.1	-5.47	-5.47
Titan	E	2048-10-15T00:17:08.964	56.50	-18.71	2575.1	-9.14	-9.14

