

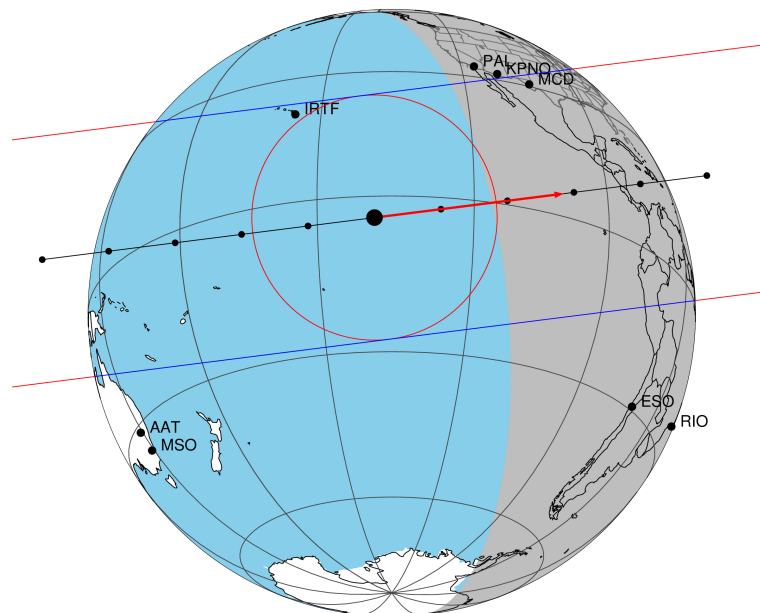
target : Titan  
 target radius (km) : 2575.15  
 C/A epoch : 2048-10-26T01:29:20.660  
 Event type : Pgt  
 : Titan occs: geocentric, topocentric  
 : Not a ringed target  
 Gaia source ID : 4078515684610782464  
 2Mass ID (if available) : 18435919-2241571

ICRS Star Coord at Epoch: 18h 43m 59.16123s -22:41:58.02413s  
 RUWE (>1.4 is poor) : 3.29  
 K magnitude : 14.969  
 G magnitude : 18.144  
 RP magnitude : 16.994  
 BP magnitude : 18.526  
 DUPflag : 0  
 Distance (au) : 10.370  
 f0 (km) : 0.00  
 g0 (km) : 0.00  
 skyplane vel. (km/s) : 23.44  
 Sun-Target sep (deg) : 67.51  
 Sun-Moon sep (deg) : 160.53  
 B (ring opening deg) : 25.70  
 PA of pole (deg) : 6.41  
 Pole direction: RA (deg): 39.48270  
 Dec (deg): 83.42790  
 C/A sky separation (") : 0.269  
 C/A sky separation (km) : 2024.9  
 NAIF SPICE kernels : RAJobs\_U111+rgf16.spk  
 URKALLv1.spk  
 naif0012.tls  
 nep097.bsp  
 nep101.bsp  
 sat4401.bsp

Observable events with sun below -5 deg and altitude above 5 deg

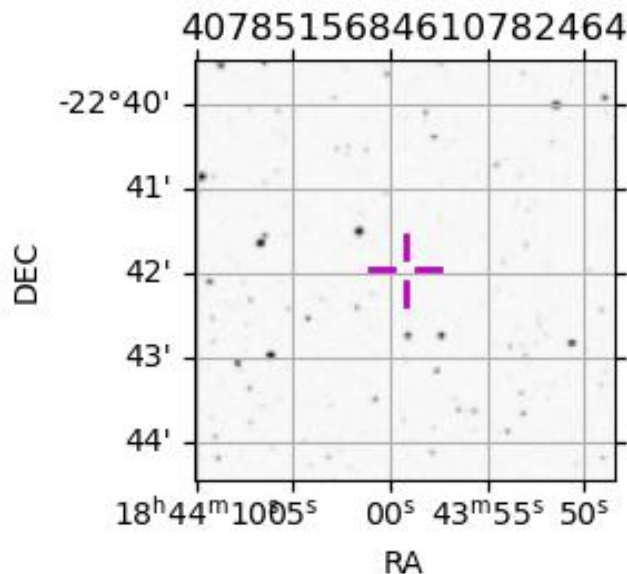
Obs	Location	lat	Elon	Target	Observed Events Interval	OEcode
PIC	Pic du Midi	42.9	0.1			Pnn
PAL	Palomar Mt (200")	33.4	243.1			Pnn
PMO	Purple Mtn Obs. Nanking	32.1	118.8			Pnn
KPNO	Kitt Peak Natl Obs	32.0	248.4			Pnn
MCD	McDonald Obs. 2.7m	30.7	256.0	+ +	OCT 26 01:31 - OCT 26 01:32	Pie
TEN	Teide Obs./Tenerife	28.3	343.5			Pnn
IRTF	Mauna Kea/IRTF	19.8	204.5			Pnn
KAV	Kavalur Observatory	12.6	78.8			Pnn
RIO	Rio de Janeiro	-22.9	316.8			Pnn
ESO	European Southern Obs. (3.6m)	-29.3	289.3			Pnn
AAT	Siding Spring (AAT)	-31.3	149.1			Pnn
SAAO	So. Afr. Astro. Obs. (Sutherland)	-32.4	20.8			Pnn
MSO	Mt. Stromlo Observatory	-35.3	149.0			Pnn

Titan 2048-10-26T01:29:20 K14.97 G18.14 dots 60.0 sec  
 Pgt



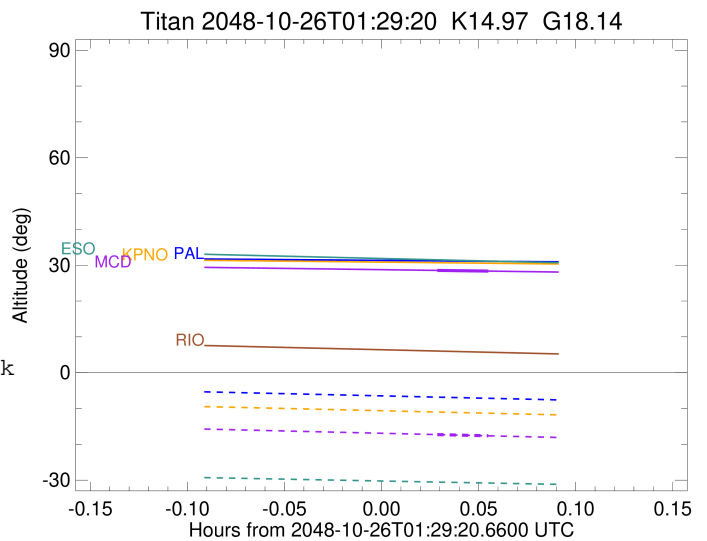
2048-10-26T01:29:20.6600 α: 18 43 59.1612 δ: -22 41 58.024 C/A 0.270" PA 352.79 deg v\_sky +23.44 km/s D 10.37 AU

Credit: Styled after SORA/Lucky Star



```

target                : Titan
target radius (km)   : 2575.15
C/A epoch            : 2048-10-26T01:31:52.060
Event type           : Pgt
: Titan occs: geocentric, topocentric
: Not a ringed target
Observer code        : MCD
Location             : McDonald Obs. 2.7m
Latitude (deg)       : 30.67158
E. Longitude (deg)  : 255.97844
Altitude (km)        : 2.075
Gaia source ID       : 4078515684610782464
2Mass ID (if available) : 18435919-2241571
ICRS Star Coord at Epoch: 18h 43m 59.16123s -22:41:58.02413s
RUWE (>1.4 is poor) : 3.29
K magnitude          : 14.969
G magnitude          : 18.144
RP magnitude         : 16.994
BP magnitude         : 18.526
DUPflag             : 0
Distance (au)        : 10.370
f0 (km)              : 0.00
g0 (km)              : 0.00
skyplane vel. (km/s) : 23.44
Sun-Target sep (deg) : 67.51
Sun-Moon sep (deg)  : 161.10
B (ring opening deg) : 25.70
PA of pole (deg)    : 6.41
Pole direction: RA (deg): 39.48270
Dec (deg): 83.42790
C/A sky separation (" ) : 0.309
C/A sky separation (km) : 2323.2
NAIF SPICE kernels  : RAJobs_U111+rgf16.spk
URKALLv1.spk
naif0012.tls
nep097.bsp
nep101.bsp
sat4401.bsp
de440.bsp
earth_720101_070426.bpc
jup365.bsp
urall6.bsp
IAU_SATURN_for_RINGFIT.tpc
pck00010.tpc
earth_200101_990628_predict.bpc
IAU_NEPTUNE_for_RINGFIT.tpc.BECAREFUL
uranus_ringframes_rfrench20220627_v1.tf
neptune_ringframes_rfrench20220702a_v1.tf
earth_flat_IAU.spk
    
```



x: target alt < 5.0 deg or sun > -5.0 deg

Target	I/E	UTC	alt	alt-sun	radius	lat-geo	lat-geodetic
Titan	I	2048-10-26T01:31:04.034	28.54	-17.29	2575.0	61.96	61.97
Titan	E	2048-10-26T01:32:40.089	28.35	-17.63	2575.1	44.06	44.08