

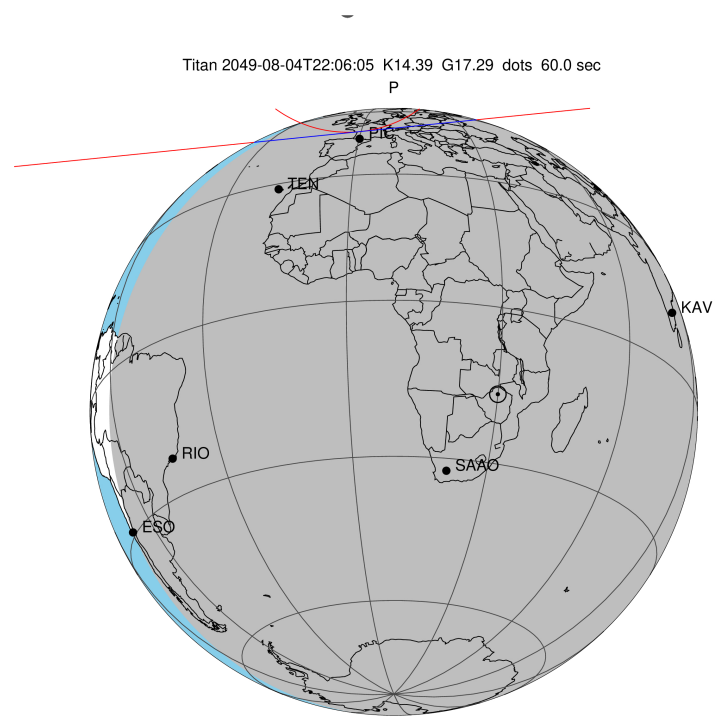
target : Titan  
 target radius (km) : 2575.15  
 C/A epoch : 2049-08-04T22:06:05.930  
 Event type : P  
 : Titan occs: not geocentric or topocentric  
 : Not a ringed target  
 Gaia source ID : 6772171395725999488  
 2Mass ID (if available) : 19345362-2141251

ICRS Star Coord at Epoch: 19h 34m 53.63117s -21:41:25.12345s  
 RUWE (>1.4 is poor) : 1.11  
 K magnitude : 14.393  
 G magnitude : 17.293  
 RP magnitude : 16.393  
 BP magnitude : 18.071  
 DUPflag : 0  
 Distance (au) : 9.038  
 f0 (km) : 0.00  
 g0 (km) : 0.00  
 skyplane vel. (km/s) : -23.46  
 Sun-Target sep (deg) : 159.67  
 Sun-Moon sep (deg) : 91.54  
 B (ring opening deg) : 23.33  
 PA of pole (deg) : 6.89  
 Pole direction: RA (deg): 39.48270  
 Dec (deg): 83.42790  
 C/A sky separation (") : 1.298  
 C/A sky separation (km) : 8511.2  
 NAIF SPICE kernels : RAJobs\_U111+rgf16.spk

URKALLv1.spk  
 naif0012.tls  
 nep097.bsp  
 nep101.bsp  
 sat4401.bsp

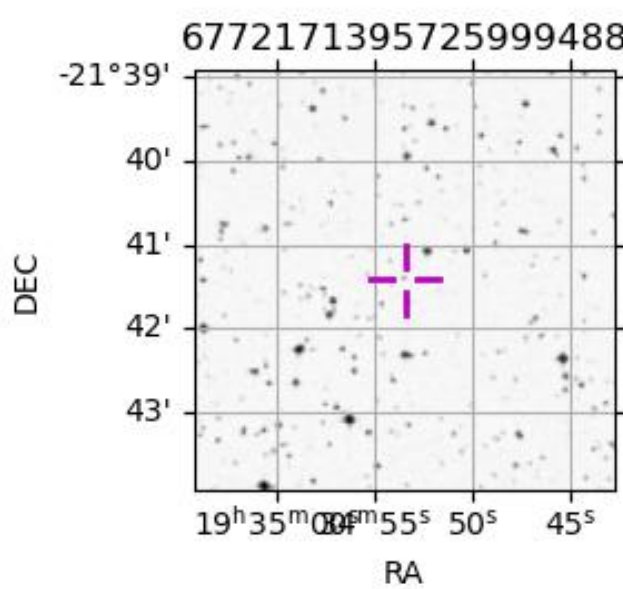
Observable events with sun below -5 deg and altitude above 5 deg

Obs	Location	lat	Elon	Target	Observed Events	Interval	OCode
PIC	Pic du Midi	42.9	0.1				Pnn
PAL	Palomar Mt (200")	33.4	243.1				Pnn
PMO	Purple Mtn Obs. Nanking	32.1	118.8				Pnn
KPNO	Kitt Peak Natl Obs	32.0	248.4				Pnn
MCD	McDonald Obs. 2.7m	30.7	256.0				Pnn
TEN	Teide Obs./Tenerife	28.3	343.5				Pnn
IRTF	Mauna Kea/IRTF	19.8	204.5				Pnn
KAV	Kavalur Observatory	12.6	78.8				Pnn
RIO	Rio de Janeiro	-22.9	316.8				Pnn
ESO	European Southern Obs. (3.6m)	-29.3	289.3				Pnn
AAT	Siding Spring (AAT)	-31.3	149.1				Pnn
SAAO	So. Afr. Astro. Obs. (Sutherland)	-32.4	20.8				Pnn
MSO	Mt. Stromlo Observatory	-35.3	149.0				Pnn



Titan 2049-08-04T22:06:05 K14.39 G17.29 dots 60.0 sec  
P

2049-08-04T22:06:05.9300 cc: 19 34 53.6312 d: -21 41 25.123 C/A 1.297" PA 354.21 deg v\_sky -23.47 km/s D 09.04 AU  
Credit: Styled after SORA/Lucky Star



6772171395725999488