

target : Titan
 target radius (km) : 2575.15
 C/A epoch : 2049-08-19T14:13:43.760
 Event type : Pgt
 : Titan occs: geocentric, topocentric
 : Not a ringed target
 Gaia source ID : 6772108586125281536
 2Mass ID (if available) : 19311415-2151059

ICRS Star Coord at Epoch: 19h 31m 14.16108s -21:51:06.04090s
 RUWE (>1.4 is poor) : 1.13
 K magnitude : 12.918
 G magnitude : 14.560
 RP magnitude : 13.985
 BP magnitude : 14.965
 DUPflag : 0
 Distance (au) : 9.151
 f0 (km) : 0.00
 g0 (km) : 0.00
 skyplane vel. (km/s) : -19.94
 Sun-Target sep (deg) : 144.73
 Sun-Moon sep (deg) : 117.02
 B (ring opening deg) : 23.59
 PA of pole (deg) : 6.87
 Pole direction: RA (deg): 39.48270
 Dec (deg): 83.42790
 C/A sky separation (") : 0.285
 C/A sky separation (km) : 1894.0
 NAIF SPICE kernels : RAJobs_U111+rgf16.spk

Titan 2049-08-19T14:13:43 K12.92 G14.56 dots 60.0 sec
 Pgt



2049-08-19T14:13:43.7600 cc: 19 31 14.1611 & -21 51 06.041 C/A 0.286" PA 172.08 deg v_sky -19.94 km/s D 09.15 AU

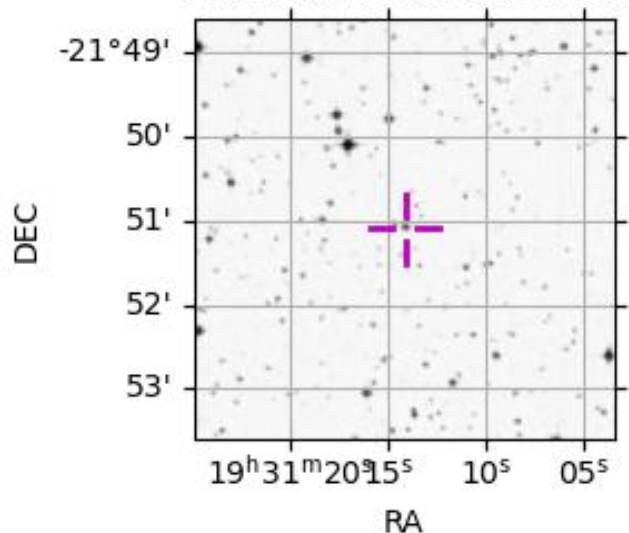
Credit: Styled after SORA/Lucky Star

URKALLv1.spk
 naif0012.tls
 nep097.bsp
 nep101.bsp
 sat4401.bsp

Observable events with sun below -5 deg and altitude above 5 deg

Obs	Location	lat	Elon	Target	Observed Events Interval	OEncode
PIC	Pic du Midi	42.9	0.1			Pnn
PAL	Palomar Mt (200")	33.4	243.1			Pnn
PMO	Purple Mtn Obs. Nanking	32.1	118.8			Pnn
KPNO	Kitt Peak Natl Obs	32.0	248.4			Pnn
MCD	McDonald Obs. 2.7m	30.7	256.0			Pnn
TEN	Teide Obs./Tenerife	28.3	343.5			Pnn
IRTF	Mauna Kea/IRTF	19.8	204.5			Pnn
KAV	Kavalur Observatory	12.6	78.8			Pnn
RIO	Rio de Janeiro	-22.9	316.8			Pnn
ESO	European Southern Obs. (3.6m)	-29.3	289.3			Pnn
AAT	Siding Spring (AAT)	-31.3	149.1	+ +	AUG 19 14:09 - AUG 19 14:13	Pie
SAAO	So. Afr. Astro. Obs. (Sutherland)	-32.4	20.8			Pnn
MSO	Mt. Stromlo Observatory	-35.3	149.0	+ +	AUG 19 14:09 - AUG 19 14:13	Pie

6772108586125281536



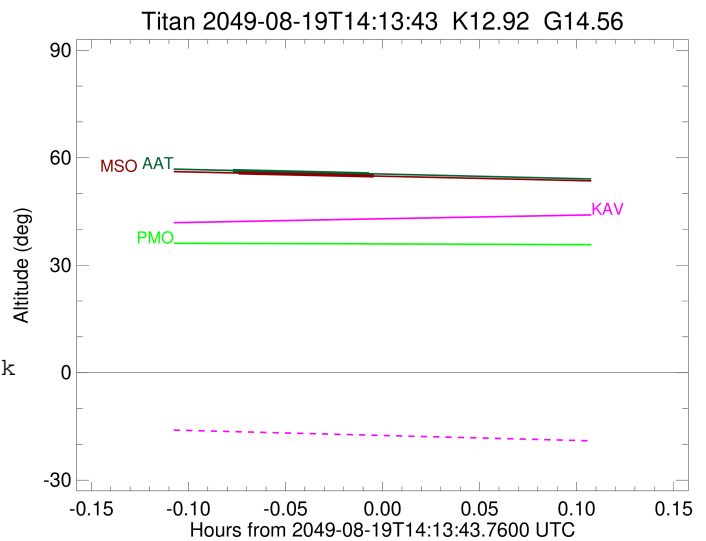
```

target                : Titan
target radius (km)   : 2575.15
C/A epoch             : 2049-08-19T14:11:12.090
Event type            : Pgt
: Titan occs: geocentric, topocentric
: Not a ringed target
Observer code         : AAT
Location              : Siding Spring (AAT)
Latitude (deg)       : -31.27703
E. Longitude (deg)   : 149.06608
Altitude (km)        : 1.164
Gaia source ID       : 6772108586125281536
2Mass ID (if available) : 19311415-2151059
ICRS Star Coord at Epoch: 19h 31m 14.16108s -21:51:06.04090s
RUWE (>1.4 is poor) : 1.13
K magnitude           : 12.918
G magnitude           : 14.560
RP magnitude          : 13.985
BP magnitude          : 14.965
DUPflag              : 0
Distance (au)        : 9.151
f0 (km)              : 0.00
g0 (km)              : 0.00
skyplane vel. (km/s) : -19.94
Sun-Target sep (deg) : 144.73
Sun-Moon sep (deg)   : 117.91
B (ring opening deg) : 23.59
PA of pole (deg)     : 6.87
Pole direction: RA (deg): 39.48270
Dec (deg): 83.42790
C/A sky separation ("): 0.002
C/A sky separation (km): 11.4
NAIF SPICE kernels   : RAJobs_U111+rgf16.spk
URKALLv1.spk
naif0012.tls
nep097.bsp
nep101.bsp
sat4401.bsp
de440.bsp
earth_720101_070426.bpc
jup365.bsp
urall6.bsp
IAU_SATURN_for_RINGFIT.tpc
pck00010.tpc
earth_200101_990628_predict.bpc
IAU_NEPTUNE_for_RINGFIT.tpc.BECAREFUL
uranus_ringframes_rfrench20220627_v1.tf
neptune_ringframes_rfrench20220702a_v1.tf
earth_flat_IAU.spk

```

x: target alt < 5.0 deg or sun > -5.0 deg

Target	I/E	UTC	alt	alt-sun	radius	lat-geo	lat-geodetic
Titan	I	2049-08-19T14:09:04.913	56.43	-71.38	2575.1	-13.06	-13.06
Titan	E	2049-08-19T14:13:19.276	55.53	-71.33	2575.1	13.30	13.30



```

target                : Titan
target radius (km)   : 2575.15
C/A epoch             : 2049-08-19T14:11:22.330
Event type            : Pgt
: Titan occs: geocentric, topocentric
: Not a ringed target
Observer code         : MSO
Location              : Mt. Stromlo Observatory
Latitude (deg)       : -35.32000
E. Longitude (deg)   : 149.00833
Altitude (km)        : 0.770
Gaia source ID       : 6772108586125281536
2Mass ID (if available) : 19311415-2151059
ICRS Star Coord at Epoch: 19h 31m 14.16108s -21:51:06.04090s
RUWE (>1.4 is poor) : 1.13
K magnitude           : 12.918
G magnitude           : 14.560
RP magnitude          : 13.985
BP magnitude          : 14.965
DUPflag              : 0
Distance (au)         : 9.151
f0 (km)               : 0.00
g0 (km)               : 0.00
skyplane vel. (km/s) : -19.94
Sun-Target sep (deg) : 144.73
Sun-Moon sep (deg)   : 117.89
B (ring opening deg) : 23.59
PA of pole (deg)     : 6.87
Pole direction: RA (deg): 39.48270
Dec (deg): 83.42790
C/A sky separation (") : 0.059
C/A sky separation (km) : 389.6
NAIF SPICE kernels   : RAJobs_U111+rgf16.spk
URKALLv1.spk
naif0012.tls
nep097.bsp
nep101.bsp
sat4401.bsp
de440.bsp
earth_720101_070426.bpc
jup365.bsp
urall6.bsp
IAU_SATURN_for_RINGFIT.tpc
pck00010.tpc
earth_200101_990628_predict.bpc
IAU_NEPTUNE_for_RINGFIT.tpc.BECAREFUL
uranus_ringframes_rfrench20220627_v1.tf
neptune_ringframes_rfrench20220702a_v1.tf
earth_flat_IAU.spk

```

x: target alt < 5.0 deg or sun > -5.0 deg

Target	I/E	UTC	alt	alt-sun	radius	lat-geo	lat-geodetic
Titan	I	2049-08-19T14:09:16.537	55.72	-67.35	2575.1	-21.09	-21.10
Titan	E	2049-08-19T14:13:28.145	54.88	-67.31	2575.2	5.24	5.25

