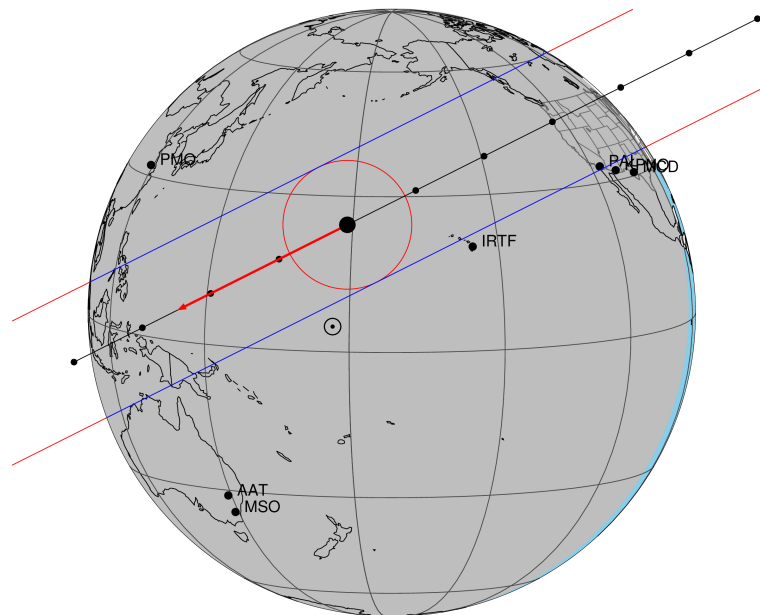


target : Triton
 target radius (km) : 1352.60
 C/A epoch : 2035-10-05T12:01:09.750
 Event type : Pt
 : Triton occs: topocentric, not geocentric
 : Not a ringed target
 Gaia source ID : 2566175343690470144
 2Mass ID (if available) : 01274390+0720076

ICRS Star Coord at Epoch: 01h 27m 43.93686s +07:20:07.74648s
 RUWE (>1.4 is poor) : 1.02
 K magnitude : 13.049
 G magnitude : 15.808
 RP magnitude : 14.941
 BP magnitude : 16.582
 DUPflag : 0
 Distance (au) : 28.856
 f0 (km) : 0.00
 g0 (km) : 0.00
 skyplane vel. (km/s) : -26.74
 Sun-Target sep (deg) : 168.46
 Sun-Moon sep (deg) : 144.36
 B (ring opening deg) : -15.97
 PA of pole (deg) : -70.17
 Pole direction: RA (deg): 306.27929
 Dec (deg): 21.01738
 C/A sky separation (") : 0.099
 C/A sky separation (km) : 2068.4
 NAIF SPICE kernels : RAJobs_U111+rgf16.spk

Triton 2035-10-05T12:01:09 K13.05 G15.81 dots 60.0 sec
 Pt

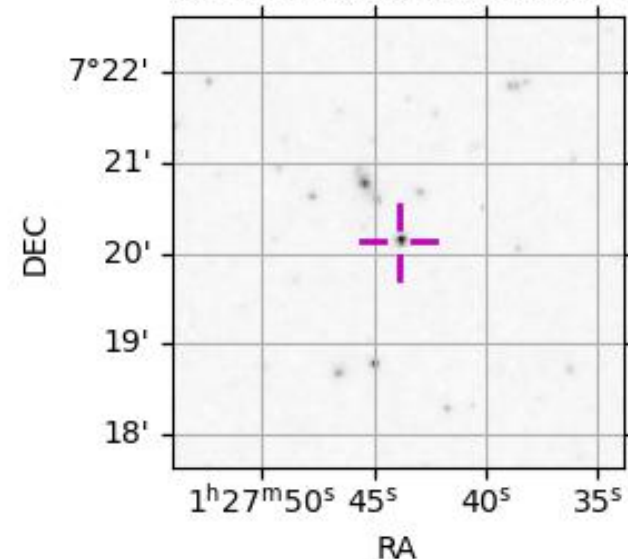


2035-10-05T12:01:09.7500 α: 01 27 43.9369 δ: +07 20 07.746 C/A 0.099" PA 333.32 deg v_sky -26.77 km/s D 28.86 AU
 Credit: Styled after SORA/Lucky Star

URKALLv1.spk
 naif0012.tls
 nep097.bsp
 nep101.bsp
 sat4401.bsp
 Observable events with sun below -5 deg and altitude above 5 deg

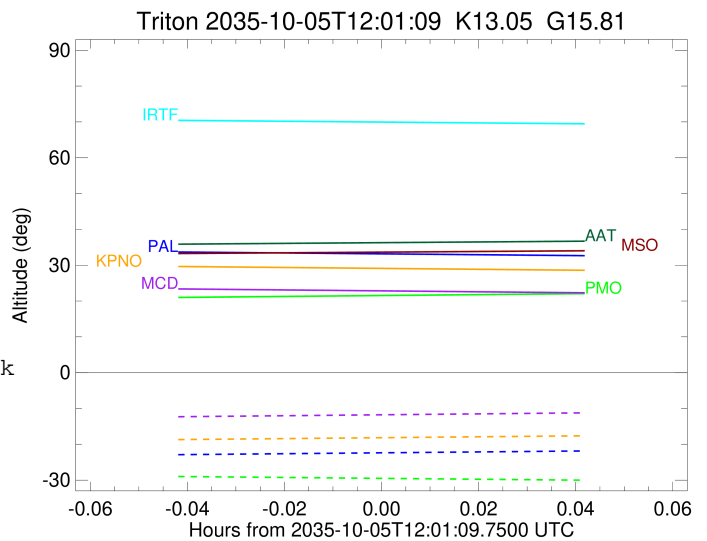
Obs	Location	lat	Elon	Target	Observed Events Interval	OEncode
PIC	Pic du Midi	42.9	0.1			Pnn
PAL	Palomar Mt (200")	33.4	243.1	+ +	OCT 05 11:57 - OCT 05 11:58	Pie
PMO	Purple Mtn Obs. Nanking	32.1	118.8			Pnn
KPNO	Kitt Peak Natl Obs	32.0	248.4			Pnn
MCD	McDonald Obs. 2.7m	30.7	256.0			Pnn
TEN	Teide Obs./Tenerife	28.3	343.5			Pnn
IRTF	Mauna Kea/IRTF	19.8	204.5			Pnn
KAV	Kavalur Observatory	12.6	78.8			Pnn
RIO	Rio de Janeiro	-22.9	316.8			Pnn
ESO	European Southern Obs. (3.6m)	-29.3	289.3			Pnn
AAT	Siding Spring (AAT)	-31.3	149.1			Pnn
SAAO	So. Afr. Astro. Obs. (Sutherland)	-32.4	20.8			Pnn
MSO	Mt. Stromlo Observatory	-35.3	149.0			Pnn

2566175343690470144



```

target                : Triton
target radius (km)   : 1352.60
C/A epoch            : 2035-10-05T11:57:54.070
Event type           : Pt
: Triton occs: topocentric, not geocentric
: Not a ringed target
Observer code        : PAL
Location             : Palomar Mt (200")
Latitude (deg)       : 33.35622
E. Longitude (deg)  : 243.13601
Altitude (km)        : 1.706
Gaia source ID       : 2566175343690470144
2Mass ID (if available) : 01274390+0720076
ICRS Star Coord at Epoch: 01h 27m 43.93686s +07:20:07.74648s
RUWE (>1.4 is poor) : 1.02
K magnitude          : 13.049
G magnitude          : 15.808
RP magnitude         : 14.941
BP magnitude         : 16.582
DUPflag             : 0
Distance (au)        : 28.856
f0 (km)              : 0.00
g0 (km)              : 0.00
skyplane vel. (km/s) : -26.74
Sun-Target sep (deg) : 168.46
Sun-Moon sep (deg)  : 144.07
B (ring opening deg) : -15.97
PA of pole (deg)    : -70.17
Pole direction: RA (deg): 306.27929
Dec (deg): 21.01738
C/A sky separation (") : 0.061
C/A sky separation (km) : 1280.4
NAIF SPICE kernels  : RAJobs_U111+rgf16.spk
URKALLv1.spk
naif0012.tls
nep097.bsp
nep101.bsp
sat4401.bsp
de440.bsp
earth_720101_070426.bpc
jup365.bsp
urall6.bsp
IAU_SATURN_for_RINGFIT.tpc
pck00010.tpc
earth_200101_990628_predict.bpc
IAU_NEPTUNE_for_RINGFIT.tpc.BECAREFUL
uranus_ringframes_rfrench20220627_v1.tf
neptune_ringframes_rfrench20220702a_v1.tf
earth_flat_IAU.spk
    
```



```

x: target alt < 5.0 deg or sun > -5.0 deg

```

Target	I/E	UTC	alt	alt-sun	radius	lat-geo	lat-geodetic
Triton	I	2035-10-05T11:57:37.914	33.89	-23.10	1352.7	-26.44	-26.44
Triton	E	2035-10-05T11:58:10.227	33.78	-22.99	1352.7	-60.78	-60.78