

target : Triton
 target radius (km) : 1352.60
 C/A epoch : 2035-10-10T14:17:23.750
 Event type : Pt
 : Triton occs: topocentric, not geocentric
 : Not a ringed target
 Gaia source ID : 2566173934941174400
 2Mass ID (if available) : 01271282+0717102

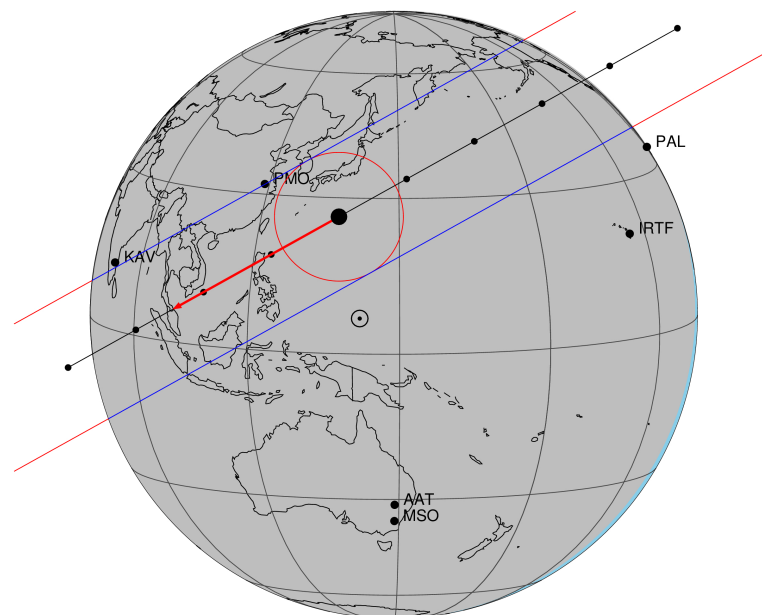
ICRS Star Coord at Epoch: 01h 27m 12.82180s +07:17:09.94514s
 RUWE (>1.4 is poor) : 1.01
 K magnitude : 12.862
 G magnitude : 14.332
 RP magnitude : 13.809
 BP magnitude : 14.683
 DUPflag : 0
 Distance (au) : 28.844
 f0 (km) : 0.00
 g0 (km) : 0.00
 skyplane vel. (km/s) : -27.10
 Sun-Target sep (deg) : 173.52
 Sun-Moon sep (deg) : 83.43
 B (ring opening deg) : -16.08
 PA of pole (deg) : -70.16
 Pole direction: RA (deg): 306.28228
 Dec (deg): 21.01802
 C/A sky separation (") : 0.113
 C/A sky separation (km) : 2357.8
 NAIF SPICE kernels : RAJobs_U111+rgf16.spk

URKALLv1.spk
 naif0012.tls
 nep097.bsp
 nep101.bsp
 sat4401.bsp

Observable events with sun below -5 deg and altitude above 5 deg

Obs	Location	lat	Elon	Target	Observed Events Interval	OCode
PIC	Pic du Midi	42.9	0.1			Pnn
PAL	Palomar Mt (200")	33.4	243.1			Pnn
PMO	Purple Mtn Obs. Nanking	32.1	118.8	+ +	OCT 10 14:17 - OCT 10 14:18	Pie
KPNO	Kitt Peak Natl Obs	32.0	248.4			Pnn
MCD	McDonald Obs. 2.7m	30.7	256.0			Pnn
TEN	Teide Obs./Tenerife	28.3	343.5			Pnn
IRTF	Mauna Kea/IRTF	19.8	204.5			Pnn
KAV	Kavalur Observatory	12.6	78.8			Pnn
RIO	Rio de Janeiro	-22.9	316.8			Pnn
ESO	European Southern Obs. (3.6m)	-29.3	289.3			Pnn
AAT	Siding Spring (AAT)	-31.3	149.1			Pnn
SAAO	So. Afr. Astro. Obs. (Sutherland)	-32.4	20.8			Pnn
MSO	Mt. Stromlo Observatory	-35.3	149.0			Pnn

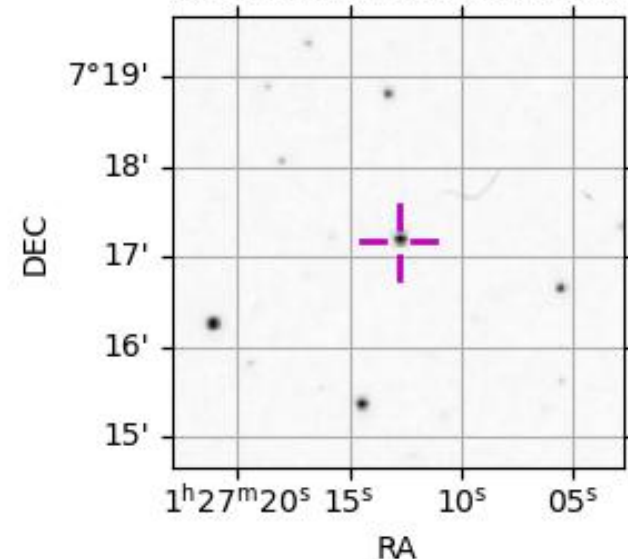
Triton 2035-10-10T14:17:23 K12.86 G14.33 dots 60.0 sec
 Pt



2035-10-10T14:17:23.7500 α: 01 27 12.8218 δ: +07 17 09.945 C/A 0.113" PA 330.87 deg v_sky -27.12 km/s D 28.84 AU

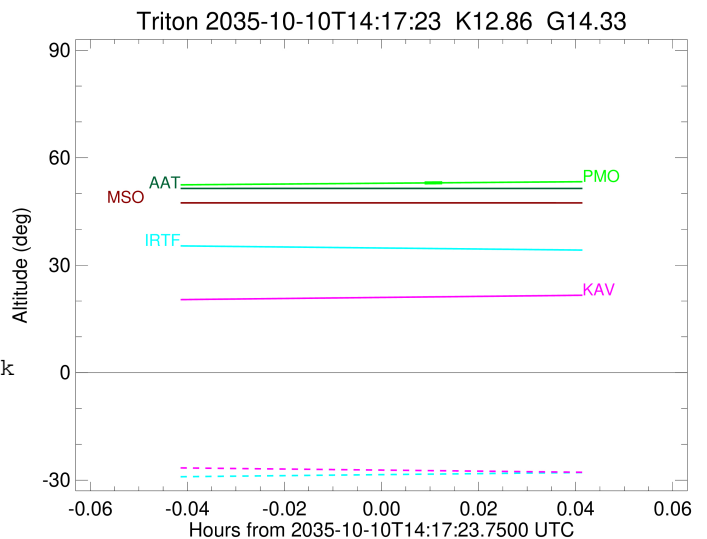
Credit: Styled after SORA/Lucky Star

2566173934941174400



```

target                : Triton
target radius (km)   : 1352.60
C/A epoch            : 2035-10-10T14:18:02.180
Event type          : Pt
: Triton occs: topocentric, not geocentric
: Not a ringed target
Observer code       : PMO
Location            : Purple Mtn Obs. Nanking
Latitude (deg)      : 32.06667
E. Longitude (deg)  : 118.82089
Altitude (km)       : 0.364
Gaia source ID      : 2566173934941174400
2Mass ID (if available) : 01271282+0717102
ICRS Star Coord at Epoch: 01h 27m 12.82180s +07:17:09.94514s
RUWE (>1.4 is poor) : 1.01
K magnitude         : 12.862
G magnitude         : 14.332
RP magnitude        : 13.809
BP magnitude        : 14.683
DUPflag            : 0
Distance (au)       : 28.844
f0 (km)             : 0.00
g0 (km)             : 0.00
skyplane vel. (km/s) : -27.10
Sun-Target sep (deg) : 173.52
Sun-Moon sep (deg)  : 84.13
B (ring opening deg) : -16.08
PA of pole (deg)    : -70.16
Pole direction: RA (deg): 306.28228
Dec (deg): 21.01802
C/A sky separation (") : 0.064
C/A sky separation (km) : 1337.7
NAIF SPICE kernels  : RAJobs_U111+rgf16.spk
URKALLv1.spk
naif0012.tls
nep097.bsp
nep101.bsp
sat4401.bsp
de440.bsp
earth_720101_070426.bpc
jup365.bsp
urall6.bsp
IAU_SATURN_for_RINGFIT.tpc
pck00010.tpc
earth_200101_990628_predict.bpc
IAU_NEPTUNE_for_RINGFIT.tpc.BECAREFUL
uranus_ringframes_rfrench20220627_v1.tf
neptune_ringframes_rfrench20220702a_v1.tf
earth_flat_IAU.spk
    
```



x: target alt < 5.0 deg or sun > -5.0 deg

Target	I/E	UTC	alt	alt-sun	radius	lat-geo	lat-geodetic
Triton	I	2035-10-10T14:17:54.866	52.96	-56.66	1352.6	53.79	53.79
Triton	E	2035-10-10T14:18:09.500	53.00	-56.70	1352.7	38.19	38.19