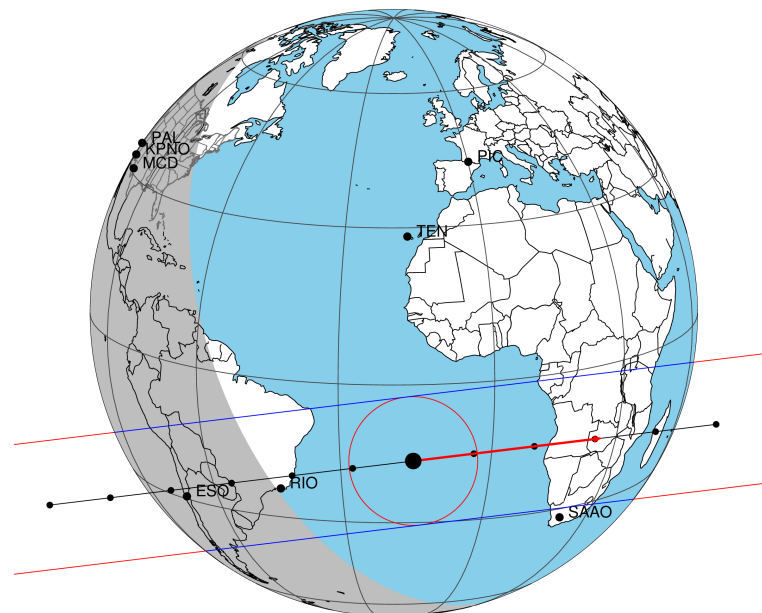


target : Triton
 target radius (km) : 1352.60
 C/A epoch : 2043-06-25T09:43:57.520
 Event type : Pt
 : Triton occs: topocentric, not geocentric
 : Not a ringed target
 Gaia source ID : 26895600603666432
 2Mass ID (if available) : 02374371+1334334

Triton 2043-06-25T09:43:57 K14.02 G17.25 dots 60.0 sec
 Pt

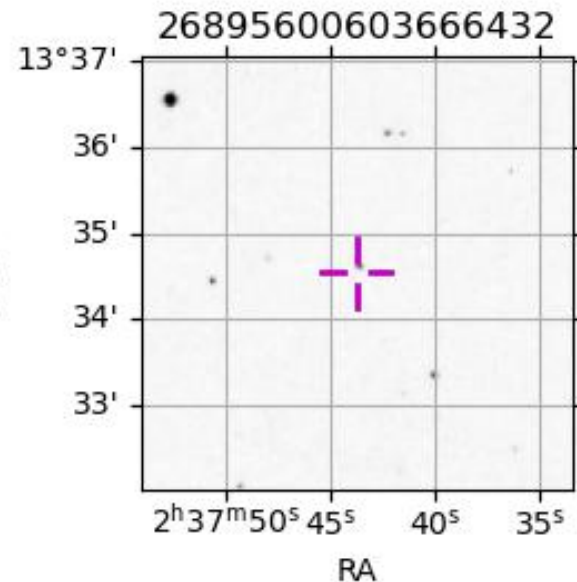
ICRS Star Coord at Epoch: 02h 37m 43.74095s +13:34:30.89428s
 RUWE (>1.4 is poor) : 1.02
 K magnitude : 14.023
 G magnitude : 17.253
 RP magnitude : 16.192
 BP magnitude : 18.392
 DUPflag : 0
 Distance (au) : 30.426
 f0 (km) : 0.00
 g0 (km) : 0.00
 skyplane vel. (km/s) : 21.37
 Sun-Target sep (deg) : 51.87
 Sun-Moon sep (deg) : 95.73
 B (ring opening deg) : -3.54
 PA of pole (deg) : -68.82
 Pole direction: RA (deg): 307.91978
 Dec (deg): 21.41113
 C/A sky separation (") : 0.143
 C/A sky separation (km) : 3145.9
 NAIF SPICE kernels : RAJobs_U111+rgf16.spk



2043-06-25T09:43:57.5200 α : 02 37 43.7410 δ : +13 34 30.894 C/A 0.142" PA 173.08 deg v_sky +21.35 km/s D 30.43 AU
 Credit: Styled after SORA/Lucky Star

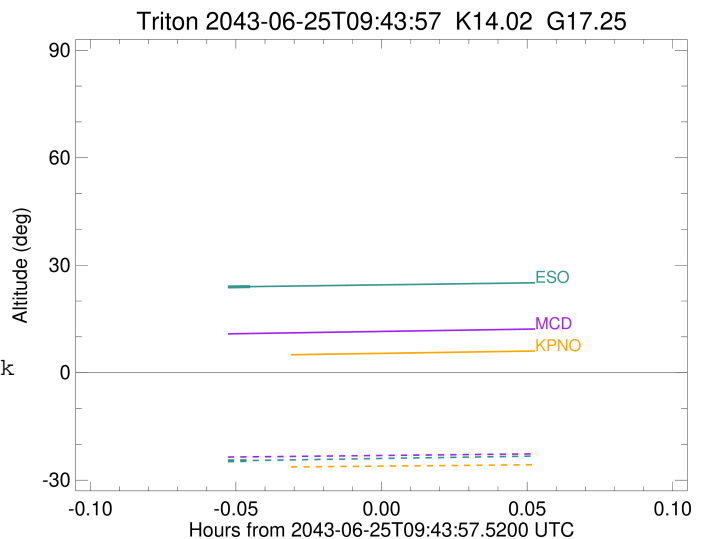
Observable events with sun below -5 deg and altitude above 5 deg

Obs	Location	lat	Elon	Target	Observed Events Interval	OCode
PIC	Pic du Midi	42.9	0.1			Pnn
PAL	Palomar Mt (200")	33.4	243.1			Pnn
PMO	Purple Mtn Obs. Nanking	32.1	118.8			Pnn
KPNO	Kitt Peak Natl Obs	32.0	248.4			Pnn
MCD	McDonald Obs. 2.7m	30.7	256.0			Pnn
TEN	Teide Obs./Tenerife	28.3	343.5			Pnn
IRTF	Mauna Kea/IRTF	19.8	204.5			Pnn
KAV	Kavalur Observatory	12.6	78.8			Pnn
RIO	Rio de Janeiro	-22.9	316.8			Pnn
ESO	European Southern Obs. (3.6m)	-29.3	289.3	+ +	JUN 25 09:39 - JUN 25 09:41	Pie
AAT	Siding Spring (AAT)	-31.3	149.1			Pnn
SAAO	So. Afr. Astro. Obs. (Sutherland)	-32.4	20.8			Pnn
MSO	Mt. Stromlo Observatory	-35.3	149.0			Pnn



```

target                : Triton
target radius (km)   : 1352.60
C/A epoch            : 2043-06-25T09:40:11.580
Event type           : Pt
: Triton occs: topocentric, not geocentric
: Not a ringed target
Observer code        : ESO
Location             : European Southern Obs. (3.6m)
Latitude (deg)       : -29.26097
E. Longitude (deg)   : 289.26831
Altitude (km)        : 2.400
Gaia source ID       : 26895600603666432
2Mass ID (if available) : 02374371+1334334
ICRS Star Coord at Epoch: 02h 37m 43.74095s +13:34:30.89429s
RUWE (>1.4 is poor) : 1.02
K magnitude          : 14.023
G magnitude          : 17.253
RP magnitude         : 16.192
BP magnitude         : 18.392
DUPflag             : 0
Distance (au)        : 30.426
f0 (km)              : 0.00
g0 (km)              : 0.00
skyplane vel. (km/s) : 21.37
Sun-Target sep (deg) : 51.87
Sun-Moon sep (deg)   : 96.20
B (ring opening deg) : -3.54
PA of pole (deg)     : -68.82
Pole direction: RA (deg): 307.91978
Dec (deg): 21.41113
C/A sky separation ("): 0.006
C/A sky separation (km): 132.0
NAIF SPICE kernels  : RAJobs_U111+rgf16.spk
URKALLv1.spk
naif0012.tls
nep097.bsp
nep101.bsp
sat4401.bsp
de440.bsp
earth_720101_070426.bpc
jup365.bsp
urall6.bsp
IAU_SATURN_for_RINGFIT.tpc
pck00010.tpc
earth_200101_990628_predict.bpc
IAU_NEPTUNE_for_RINGFIT.tpc.BECAREFUL
uranus_ringframes_rfrench20220627_v1.tf
neptune_ringframes_rfrench20220702a_v1.tf
earth_flat_IAU.spk
    
```



```

x: target alt < 5.0 deg or sun > -5.0 deg

```

Target	I/E	UTC	alt	alt-sun	radius	lat-geo	lat-geodetic
Triton	I	2043-06-25T09:39:07.843	23.62	-24.97	1352.6	-66.95	-66.95
Triton	E	2043-06-25T09:41:15.328	24.01	-24.52	1352.6	55.86	55.86